



PHOTO: PIRTLAW PARTNERS, LTD. #32-09

CAMERA LOOKING: NORTH



PHOTO: PIRTLAW PARTNERS, LTD. #32-09

CAMERA LOOKING: EAST

LEGEND:

LOCATION PHOTOS : PHOTO P1

Quicksilver Resources, Inc.

PIRTLAW PARTNERS, LTD. 32-09

NW1/4 NE1/4  
SECTION 9, T6N R87W, 6TH P.M.  
ROUTT COUNTY, COLORADO

1335.6' FNL 2385.1' FEL

DOWLING LAND SURVEYORS, LLC  
P.O. BOX 954  
HAYDEN, COLORADO 81639  
(970) 276-3613  
dowling@plotz.biz

| SCALE | DRG | DATE     | FILE       |
|-------|-----|----------|------------|
|       |     | 11/08/11 | FH11photos |





PHOTO: PIRTLAW PARTNERS, LTD. #32-09

CAMERA LOOKING: SOUTH

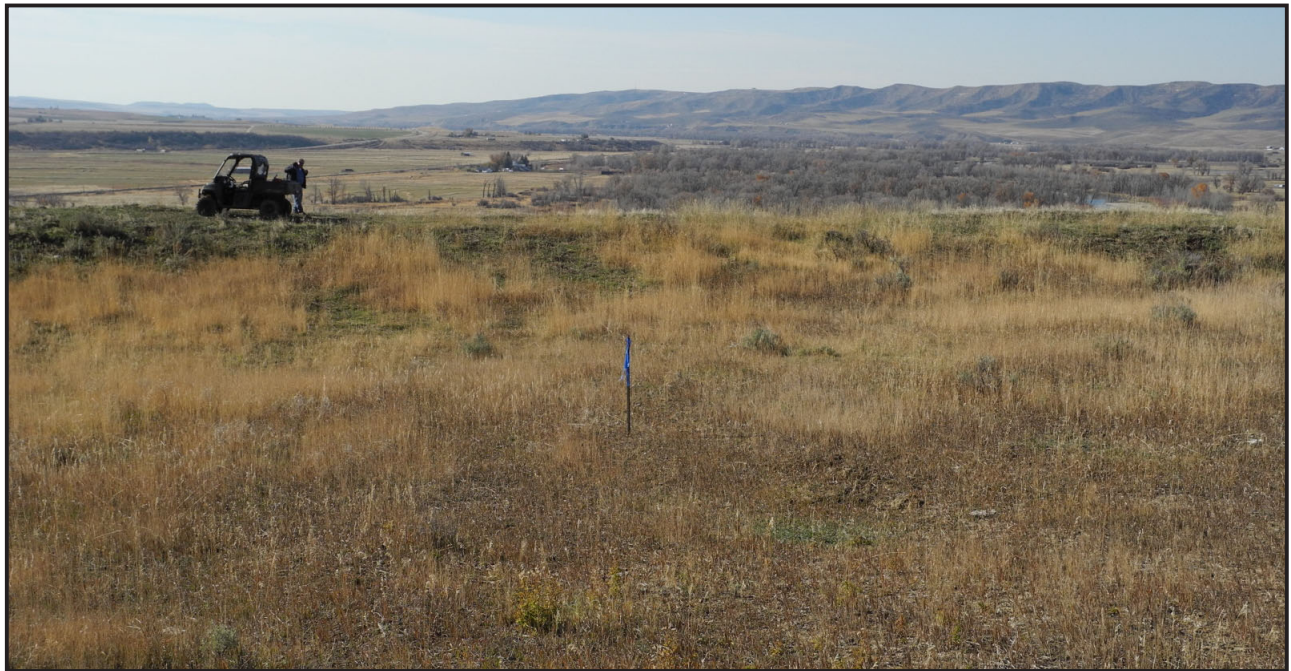


PHOTO: PIRTLAW PARTNERS, LTD. #32-09

CAMERA LOOKING: WEST

LEGEND:

LOCATION PHOTOS : PHOTO P2

Quicksilver Resources, Inc.

PIRTLAW PARTNERS, LTD. 32-09

NW1/4 NE1/4  
SECTION 9, T6N R87W, 6TH P.M.  
ROUTT COUNTY, COLORADO

1335.6' FNL 2385.1' FEL

DOWLING LAND SURVEYORS, LLC  
P.O. BOX 954  
HAYDEN, COLORADO 81639  
(970) 276-3613  
dowling@plotz.biz

| SCALE | DRG | DATE     | FILE       |
|-------|-----|----------|------------|
|       |     | 11/08/11 | FH11photos |



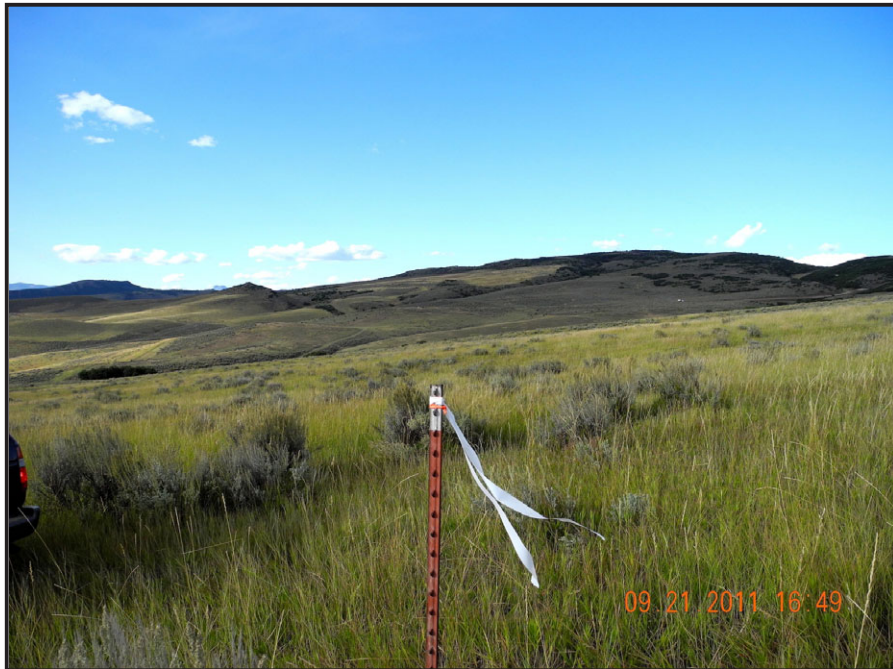


PHOTO: REFERENCE POINT

CAMERA LOOKING: NORTH

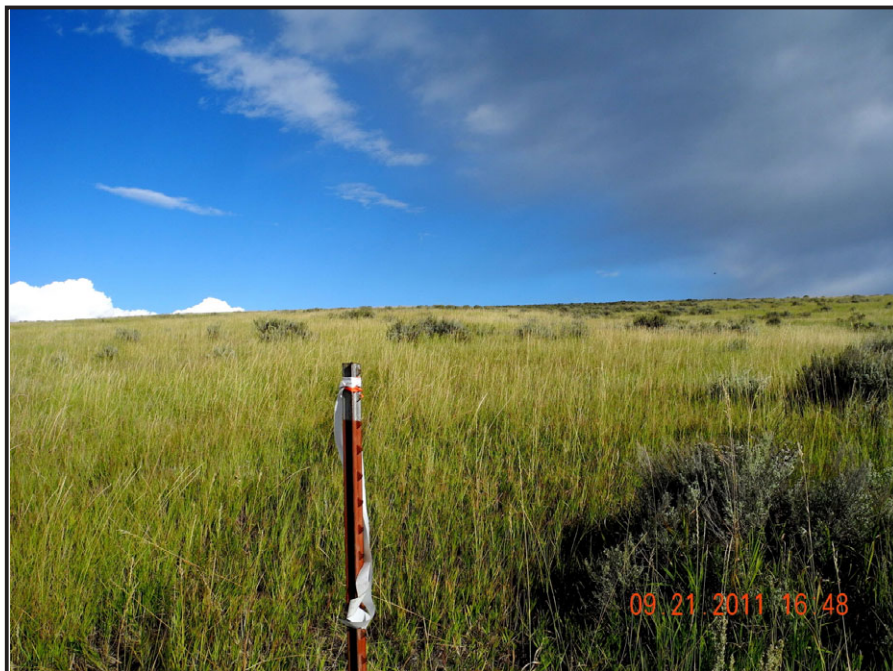


PHOTO: REFERENCE POINT

CAMERA LOOKING: EAST

**LEGEND:**

**REFERENCE POINT PHOTOS :PHOTO REF1**

**Quicksilver Resources, Inc.**

**PIRTLAW PARTNERS, LTD. 32-09**

**NW1/4 NE1/4  
SECTION 9, T6N R87W, 6TH P.M.  
ROUTT COUNTY, COLORADO**

**1335.6' FNL 2385.1' FEL**

**DOWLING LAND SURVEYORS,LLC**  
P.O. BOX 954  
HAYDEN, COLORADO 81639  
(970) 276-3613  
dowling@plotz.biz

| SCALE | DRG | DATE     | FILE      |
|-------|-----|----------|-----------|
|       |     | 11/08/11 | FH11refph |



PHOTO: REFERENCE POINT

CAMERA LOOKING: SOUTH



PHOTO: REFERENCE POINT

CAMERA LOOKING: WEST

LEGEND:

REFERENCE POINT PHOTOS :PHOTO REF1

Quicksilver Resources, Inc.

PIRTLAW PARTNERS, LTD. 32-09

NW1/4 NE1/4  
SECTION 9, T6N R87W, 6TH P.M.  
ROUTT COUNTY, COLORADO

1335.6' FNL 2385.1' FEL

DOWLING LAND SURVEYORS,LLC  
P.O. BOX 954  
HAYDEN, COLORADO 81639  
(970) 276-3613  
dowling@plotz.biz

| SCALE | DRG | DATE     | FILE      |
|-------|-----|----------|-----------|
|       |     | 11/08/11 | FH11refph |