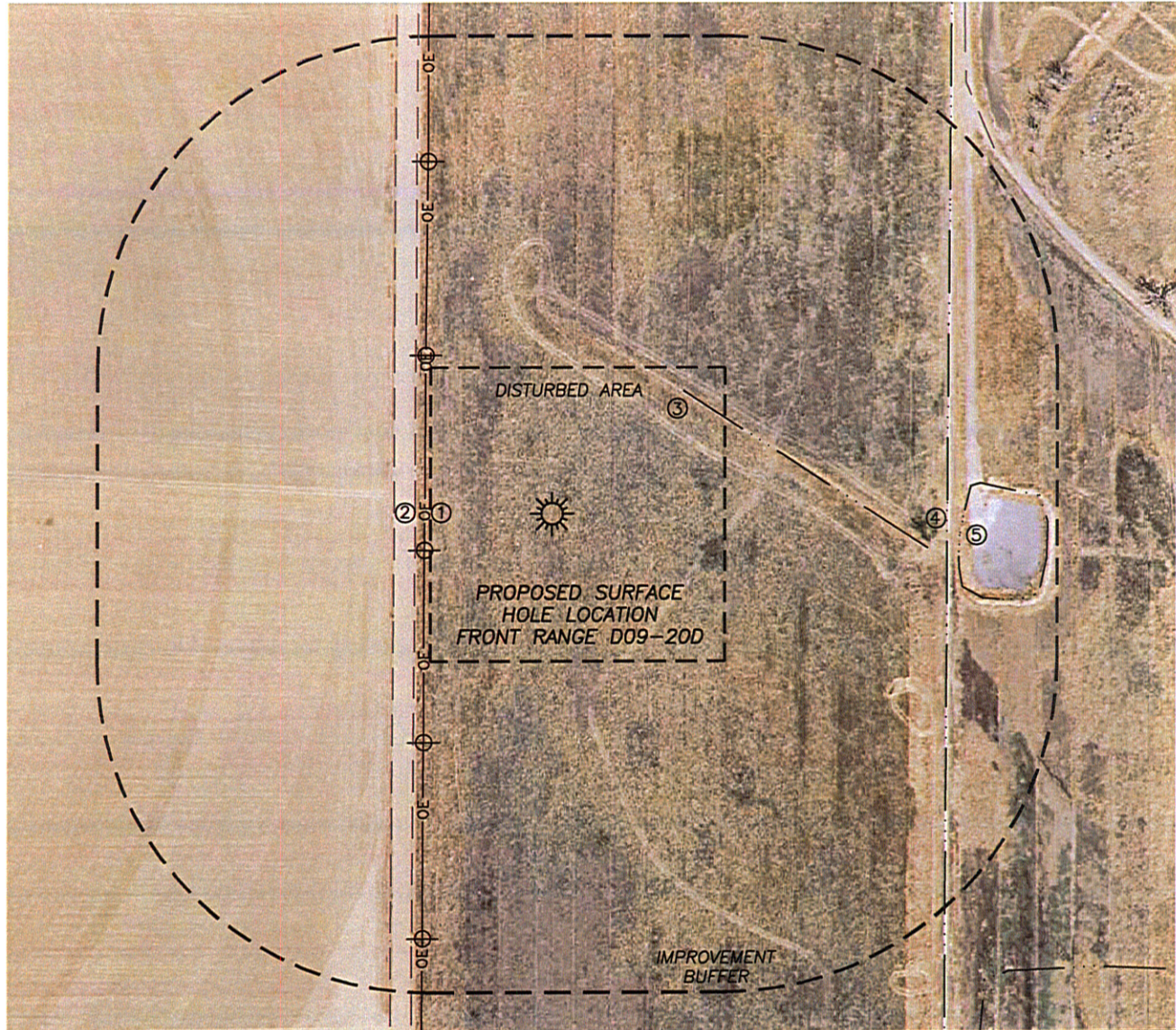


LOCATION DRAWING FRONT RANGE D09-20D

SECTION 9, TOWNSHIP 3 NORTH, RANGE 64 WEST OF THE 6TH PRINCIPAL MERIDIAN



IMPROVEMENTS

- | | |
|-------------------|----------|
| 1. O.H. UTILITY: | 153'± W |
| 2. E EDGE WCR 53: | 165'± W |
| 3. IRRIG. DITCH: | 217'± NE |
| 4. IRRIG DITCH: | 475'± E |
| 5. IRRIG. POND: | 492'± E |

DISTANCE TO NEAREST:

- | | |
|---------------------|-----------|
| BUILDING: | 1256'± NE |
| PUBLIC ROAD: | 165'± W |
| ABOVE GRND UTILITY: | 153'± W |
| RAILROAD: | 5280'± |
| PROP. LINE: | 181'± W |

