

DALEY LAND SURVEYING, INC.

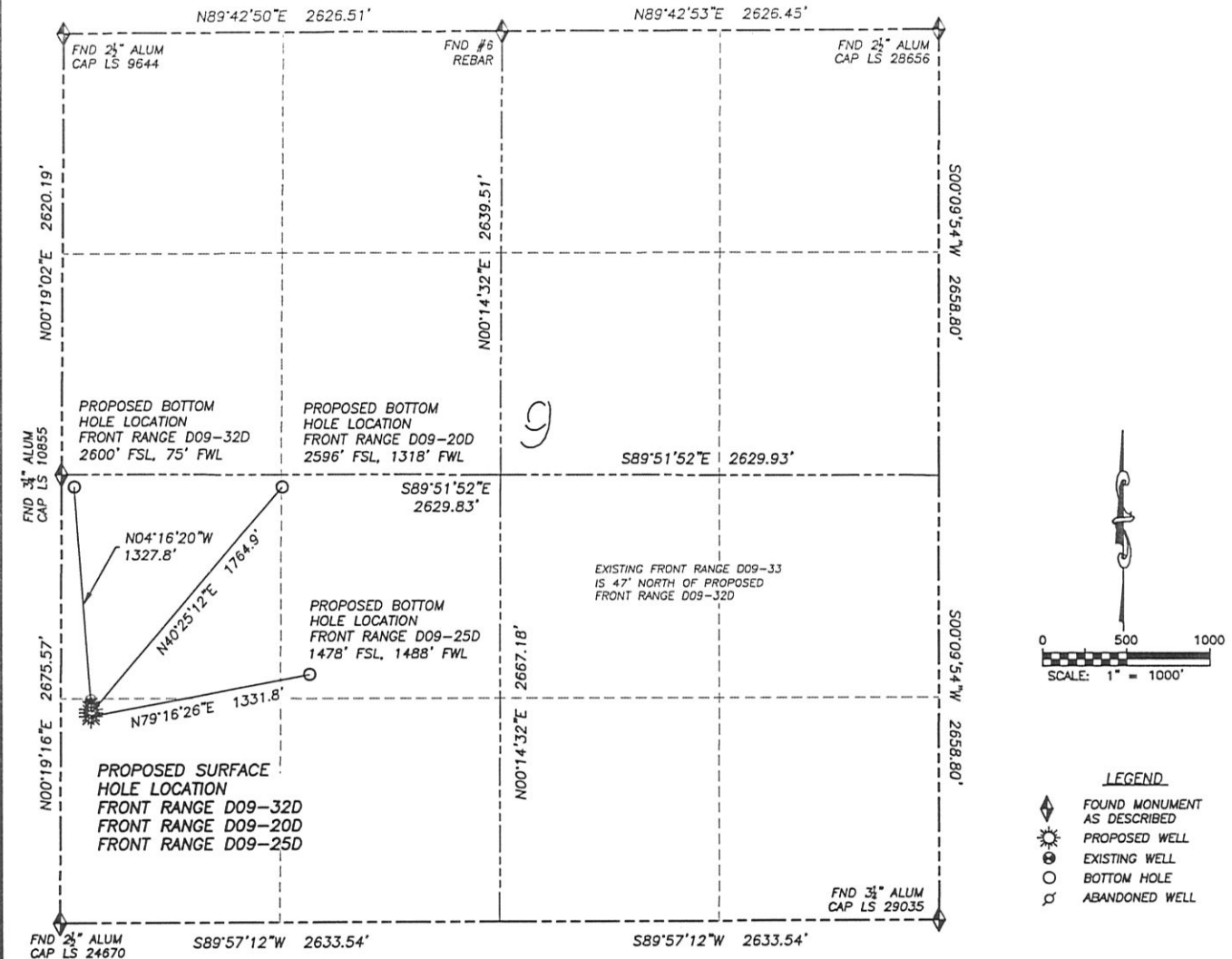
PARKER, CO. 80134

303 953 9841

MULTI-WELL PAD DIRECTIONAL LAYOUT

FRONT RANGE D09-32D, D09-20D & D09-25D

SECTION 9, TOWNSHIP 3 NORTH, RANGE 64 WEST OF THE 6TH PRINCIPAL MERIDIAN

**NAD 83 LATITUDE AND LONGITUDE****FRONT RANGE D09-32D****SURFACE HOLE:**

LATITUDE: N40.23618°

LONGITUDE: W104.56488°

ELEVATION: 4737'

FOOTAGE: 1276' FSL, 181' FWL

PDOP: 1.3

QTR/QTR: SW4/SW4

PROP LINE: 181'± WEST

BOTTOM HOLE:

LATITUDE: N40.23982°

LONGITUDE: W104.56524°

FOOTAGE: 2600' FSL, 75' FWL

NEAREST EXISTING WELL:

FRONT RANGE D09-33 SURFACE HOLE

LATITUDE: N40.23631°

LONGITUDE: W104.56489°

ELEVATION: 4737'

47' NORTH

NAD 83 LATITUDE AND LONGITUDE**FRONT RANGE D09-20D****SURFACE HOLE:**

LATITUDE: N40.23612°

LONGITUDE: W104.56488°

ELEVATION: 4737'

FOOTAGE: 1254' FSL, 181' FWL

PDOP: 1.2

QTR/QTR: SW4/SW4

PROP LINE: 181'± WEST

BOTTOM HOLE:

LATITUDE: N40.23981°

LONGITUDE: W104.56078°

FOOTAGE: 2596' FSL, 1318' FWL

NEAREST EXISTING WELL:

FRONT RANGE D09-33 SURFACE HOLE

LATITUDE: N40.23631°

LONGITUDE: W104.56489°

ELEVATION: 4737'

69' NORTH

NAD 83 LATITUDE AND LONGITUDE**FRONT RANGE D09-25D****SURFACE HOLE:**

LATITUDE: N40.23606°

LONGITUDE: W104.56488°

ELEVATION: 4737'

FOOTAGE: 1231' FSL, 181' FWL

PDOP: 1.2

QTR/QTR: SW4/SW4

PROP LINE: 181'± WEST

BOTTOM HOLE:

LATITUDE: N40.23674°

LONGITUDE: W104.56020°

FOOTAGE: 1478' FSL, 1488' FWL

NEAREST EXISTING WELL:

FRONT RANGE D09-33 SURFACE HOLE

LATITUDE: N40.23631°

LONGITUDE: W104.56489°

ELEVATION: 4737'

92' NORTH

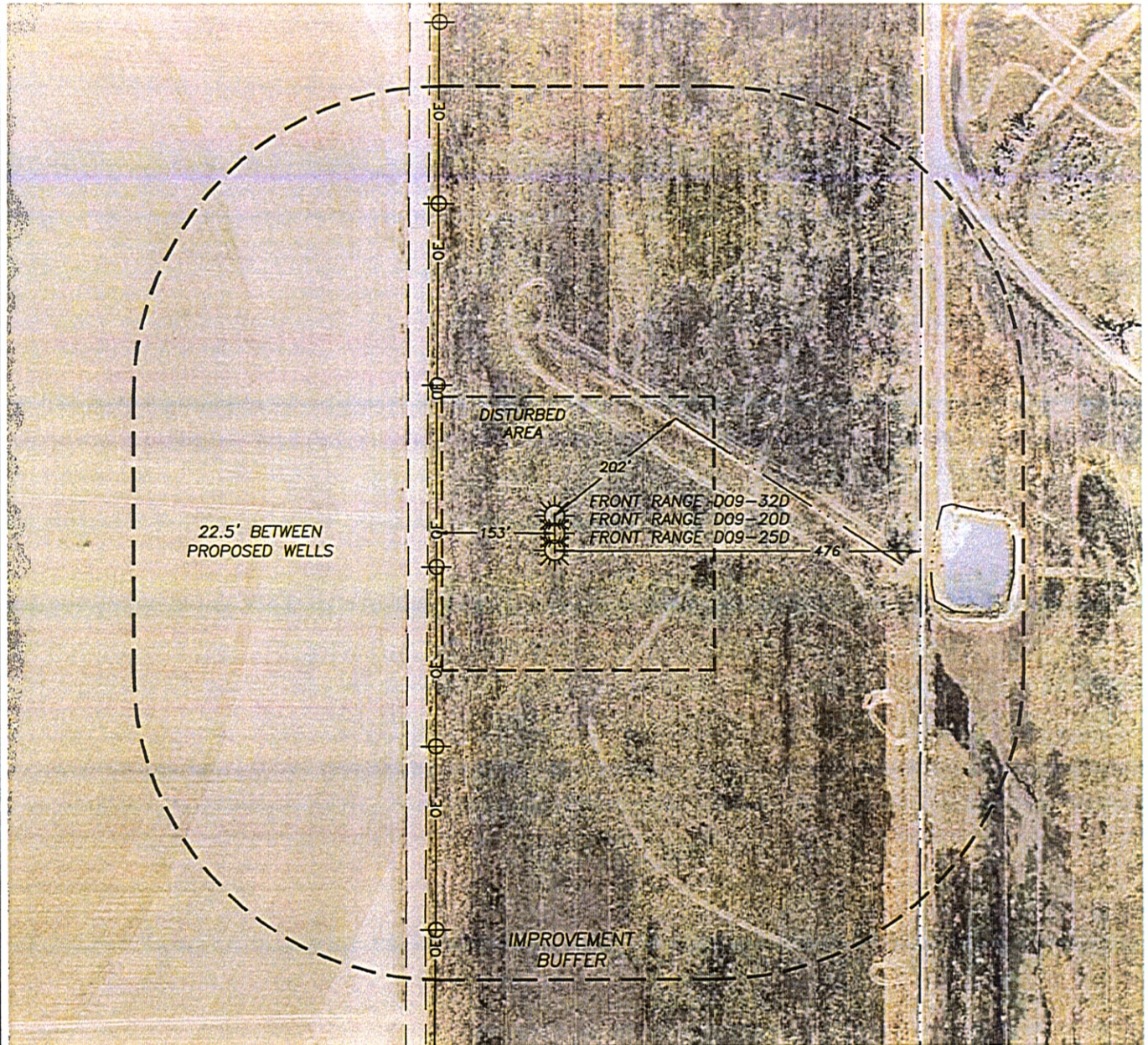
DALEY LAND SURVEYING, INC.

PARKER, CO. 80134

303 953 9841

MULTI-WELL PAD LOCATION DRAWING
FRONT RANGE D09-32D, D09-20D & D09-25D

SECTION 9, TOWNSHIP 3 NORTH, RANGE 64 WEST OF THE 6TH PRINCIPAL MERIDIAN



0 200
SCALE: 1" = 200'