

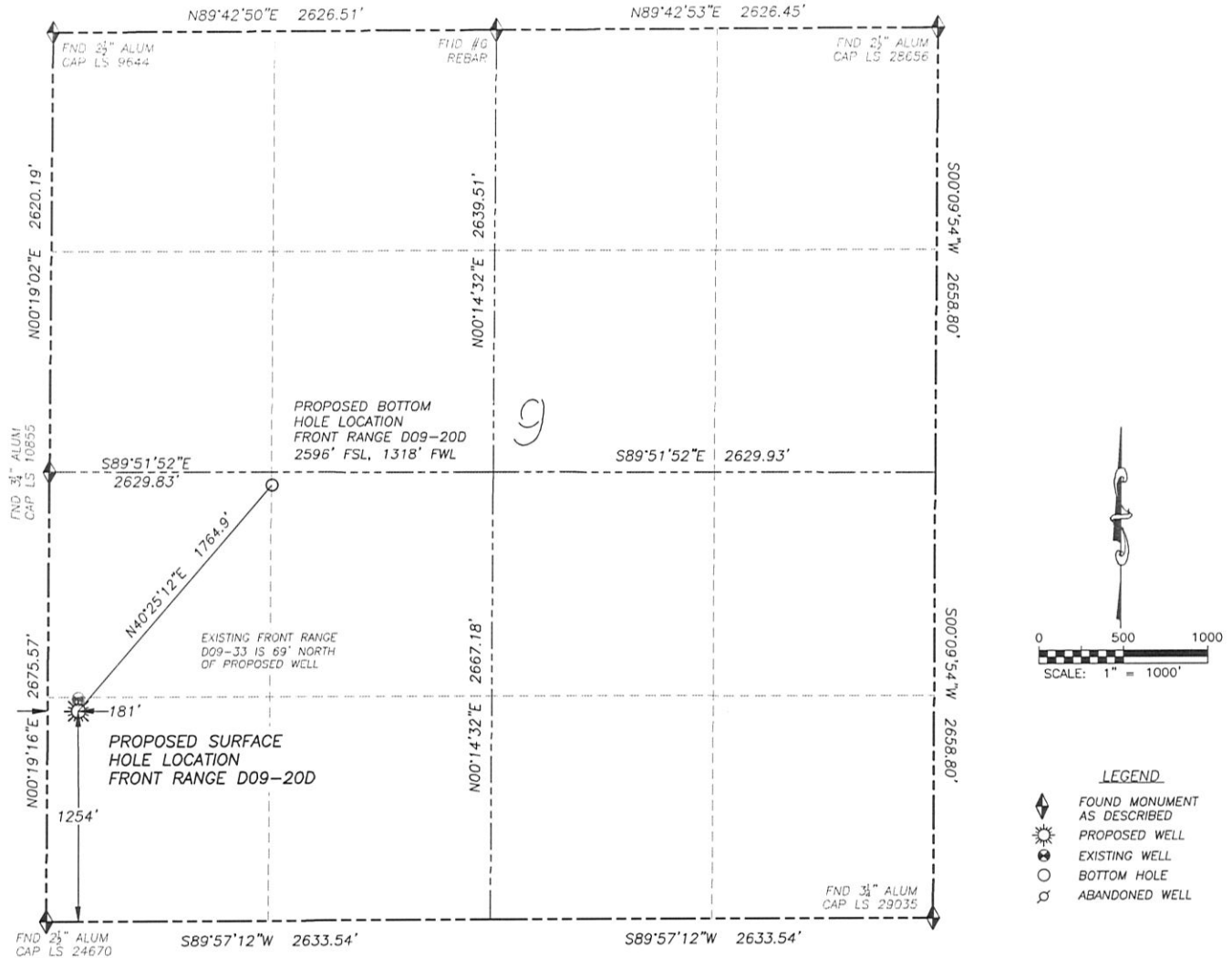
DALEY LAND SURVEYING, INC.

PARKER, CO. 80134

303 953 9841

# WELL LOCATION CERTIFICATE FRONT RANGE D09-20D

SECTION 9, TOWNSHIP 3 NORTH, RANGE 64 WEST OF THE 6TH PRINCIPAL MERIDIAN



## LEGEND

- ◆ FOUND MONUMENT AS DESCRIBED
- ☀ PROPOSED WELL
- ⊙ EXISTING WELL
- BOTTOM HOLE
- ⊗ ABANDONED WELL

## NAD 83 LATITUDE AND LONGITUDE

FRONT RANGE D09-20D

SURFACE HOLE:

LATITUDE: N40.23612°

LONGITUDE: W104.56488°

ELEVATION: 4737'

FOOTAGE: 1254' FSL, 181' FWL

PDOP: 1.2

QTR/QTR: SW4/SW4

PROP LINE: 181' ± WEST

BOTTOM HOLE:

LATITUDE: N40.23981°

LONGITUDE: W104.56078°

FOOTAGE: 2596' FSL, 1318' FWL

## NEAREST EXISTING WELL:

FRONT RANGE D09-33 SURFACE HOLE

LATITUDE: N40.23631°

LONGITUDE: W104.56489°

ELEVATION: 4737'

69' NORTH

IN ACCORDANCE WITH A REQUEST FROM RYAN HAWKINS OF NOBLE ENERGY INC., DALEY LAND SURVEYING, INC. HAS DETERMINED THE SURFACE LOCATION OF THE FRONT RANGE D09-20D WELL TO BE 1254' FSL, 181' FWL, AS MEASURED AT NINETY (90) DEGREES FROM THE SECTION LINES OF SECTION 9, TOWNSHIP 3 NORTH, RANGE 64 WEST OF THE 6TH PRINCIPAL MERIDIAN, WELD COUNTY, COLORADO. THE BOTTOM HOLE LOCATION, PROVIDED BY THE CLIENT, IS TO BE 2596' FSL, 1318' FWL.

I HEREBY CERTIFY THAT THIS WELL LOCATION CERTIFICATE WAS PREPARED BY ME OR UNDER MY DIRECT SUPERVISION, THAT THE WORK WAS COMPLETED ON 12/07/2011 FOR AND ON BEHALF OF NOBLE ENERGY, INC., AND THAT THIS MAP DOES NOT REPRESENT A BOUNDARY SURVEY, A LAND SURVEY PLAT OR AN IMPROVEMENT SURVEY PLAT AND IT IS NOT TO BE RELIED UPON FOR THE ESTABLISHMENT OF FENCE, BUILDING OR OTHER FUTURE IMPROVEMENT LINES.

## NOTES:

- 1) BEARINGS FOR THIS MAP ARE ASSUMED AND BASED UPON GPS OBSERVATIONS MADE BETWEEN MONUMENTS LOCATED AT THE SOUTHWEST CORNER AND WEST QUARTER CORNER OF SECTION 9, T.3N., R.64W.
- 2) HORIZONTAL DATUM IS NAD83.
- 3) VERTICAL DATUM IS NAVD88 AND ORIGINATES FROM THE LOCAL C.O.R.S. NETWORK, UTILIZING THE GEOID09 MODEL.
- 4) SEE LOCATION DRAWING FOR VISIBLE IMPROVEMENTS WITHIN 400' OF PROPOSED DISTURBED AREA.
- 5) SURFACE USE: PASTURE.

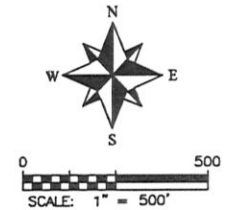
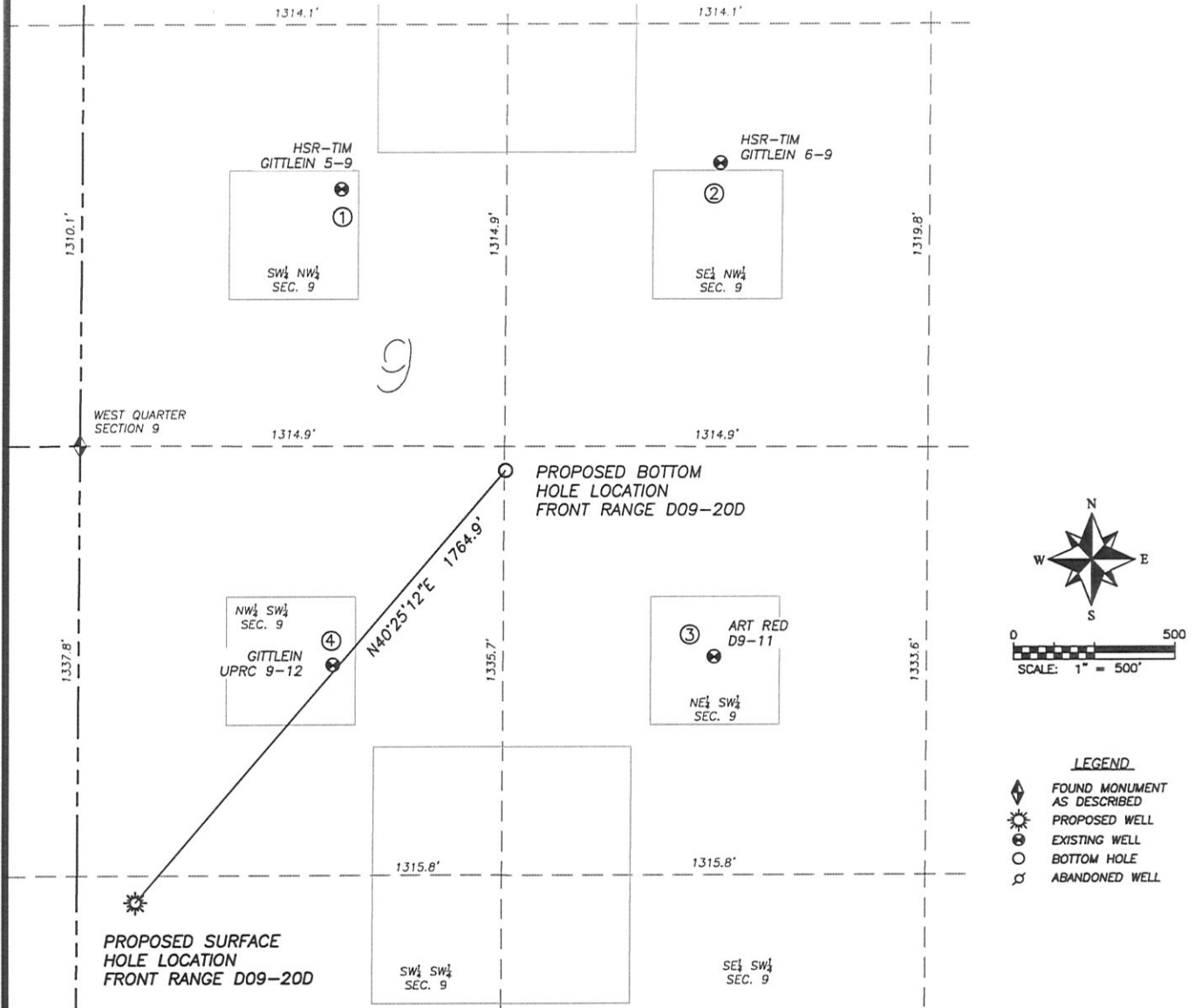
NOTICE: According to Colorado law you MUST commence any legal action based upon any defect in this W.L.C. within three years after you first discover such defect. In no event may any action based upon any such defect in this W.L.C. be commenced more than ten years from the date of the certification shown herein.



FOR AND ON BEHALF OF  
DALEY LAND SURVEYING INC.,  
Robert Daley, PLS 35597

## SITE SKETCH FRONT RANGE D09-20D

SECTION 9, TOWNSHIP 3 NORTH, RANGE 64 WEST OF THE 6TH PRINCIPAL MERIDIAN



## LEGEND

- FOUND MONUMENT AS DESCRIBED
- PROPOSED WELL
- EXISTING WELL
- BOTTOM HOLE
- ABANDONED WELL

① HSR-TIM GITTLEIN 5-9  
SW/NW SEC. 9  
1826' FNL, 802' FWL  
1014' NW OF PROPOSED  
BOTTOM HOLE LOCATION  
LAT. N40.24221'  
LONG. W104.56261'  
EL: 4729'  
PDOP 1.2

② HSR-TIM GITTLEIN 6-9  
SE/NW SEC. 9  
1751' FNL, 1980' FWL  
1166' NE OF PROPOSED  
BOTTOM HOLE LOCATION  
LAT. N40.24244'  
LONG. W104.55840'  
EL: 4727'  
PDOP 1.4

③ ART RED D9-11  
NE/SW SEC. 9  
2015' FSL, 1971' FWL  
871' SE OF PROPOSED  
BOTTOM HOLE LOCATION  
LAT. N40.23822'  
LONG. W104.55846'  
EL: 4730'  
PDOP 1.6

④ GITTLEIN UPRC 9-12  
NW/SW SEC. 9  
1993' FSL, 787' FWL  
806' SW OF PROPOSED  
BOTTOM HOLE LOCATION  
LAT. N40.23815'  
LONG. W104.56270'  
EL: 4731'  
PDOP 1.4

## NOTES:

1. THIS DOES NOT REPRESENT A BOUNDARY SURVEY
2. HORIZONTAL DATUM IS NAD83
3. VERTICAL DATUM IS NAVD88 AND ORIGINATES FROM THE LOCAL C.O.R.S. NETWORK, UTILIZING THE GEOID09 MODEL.