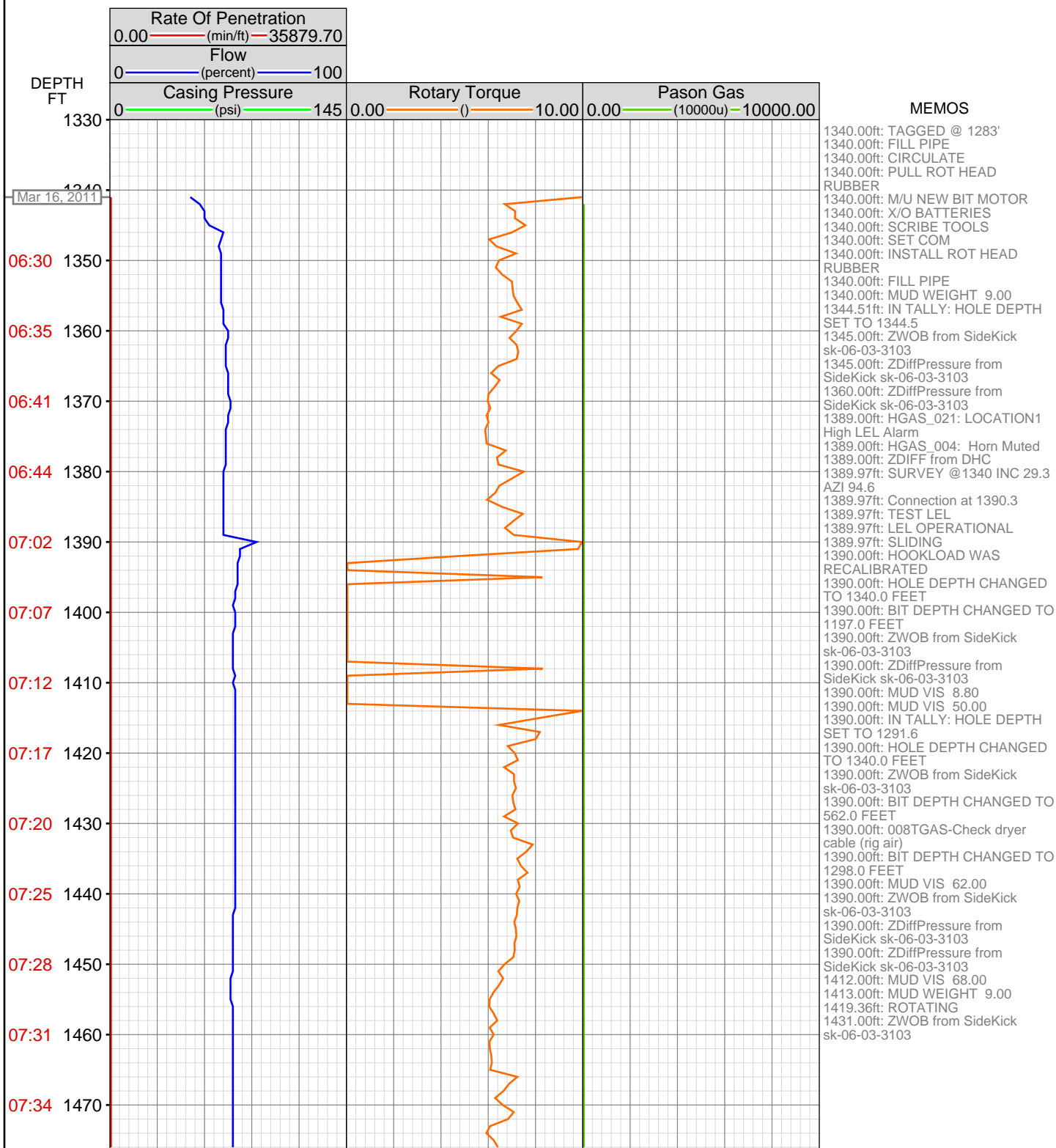
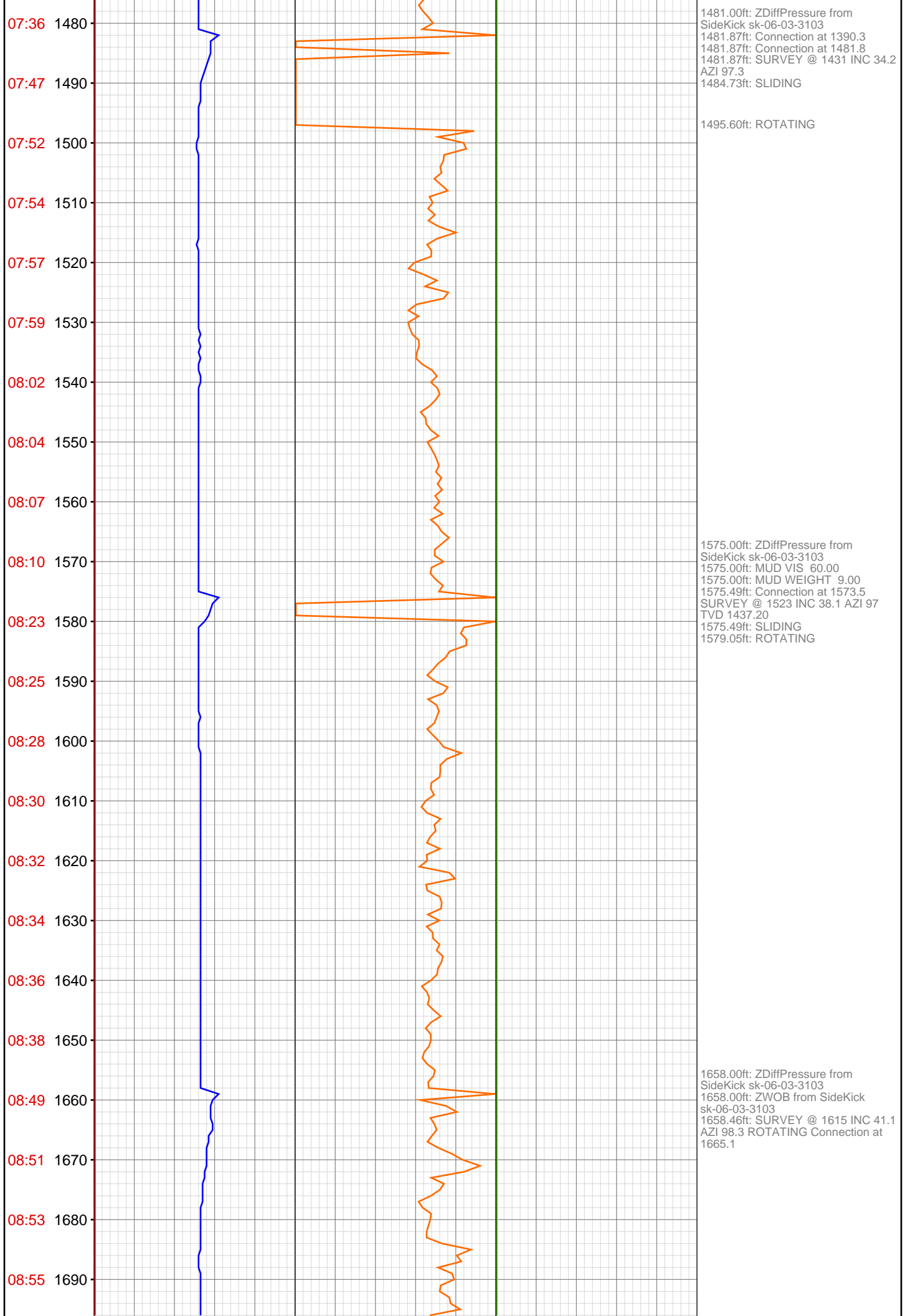
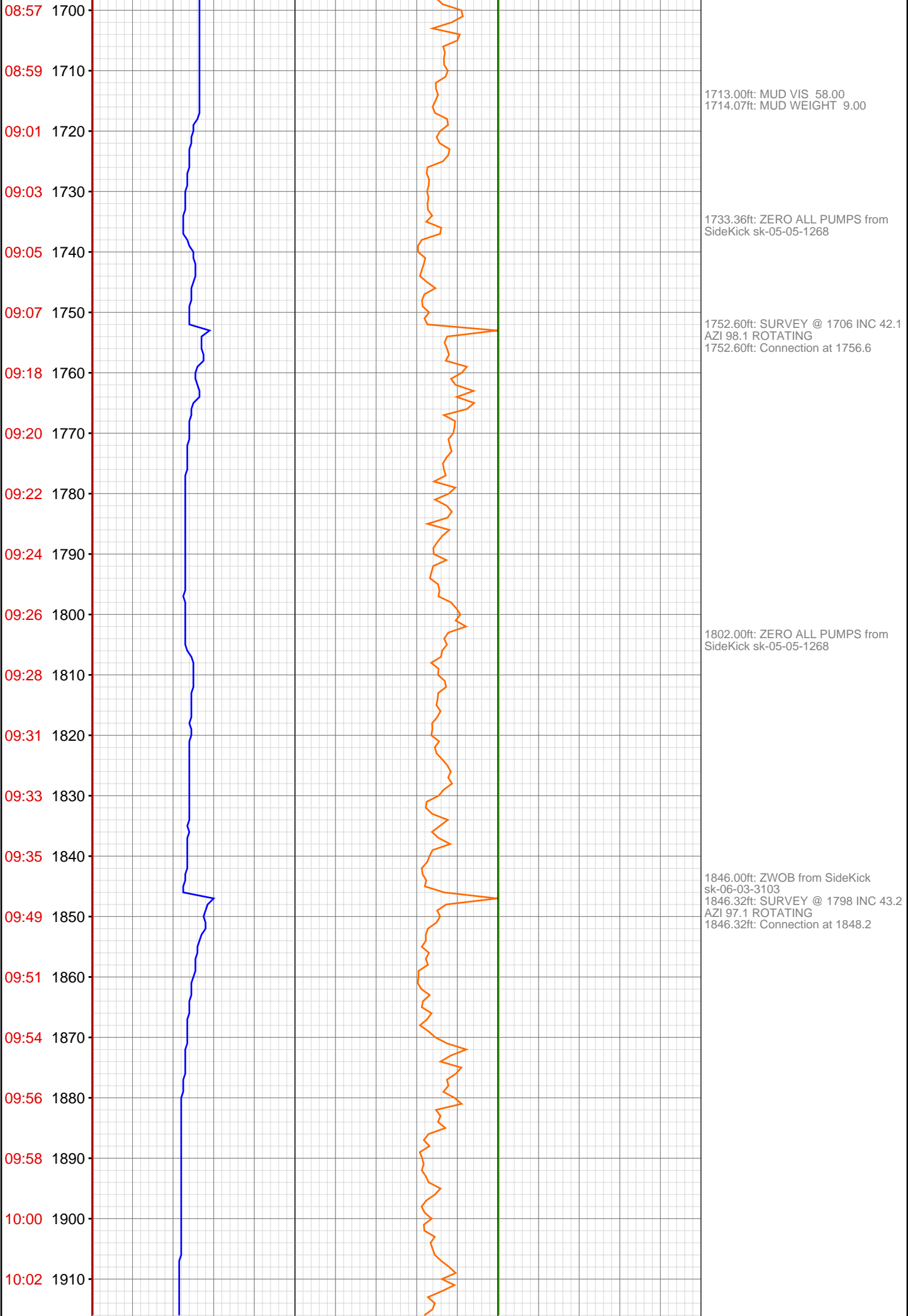


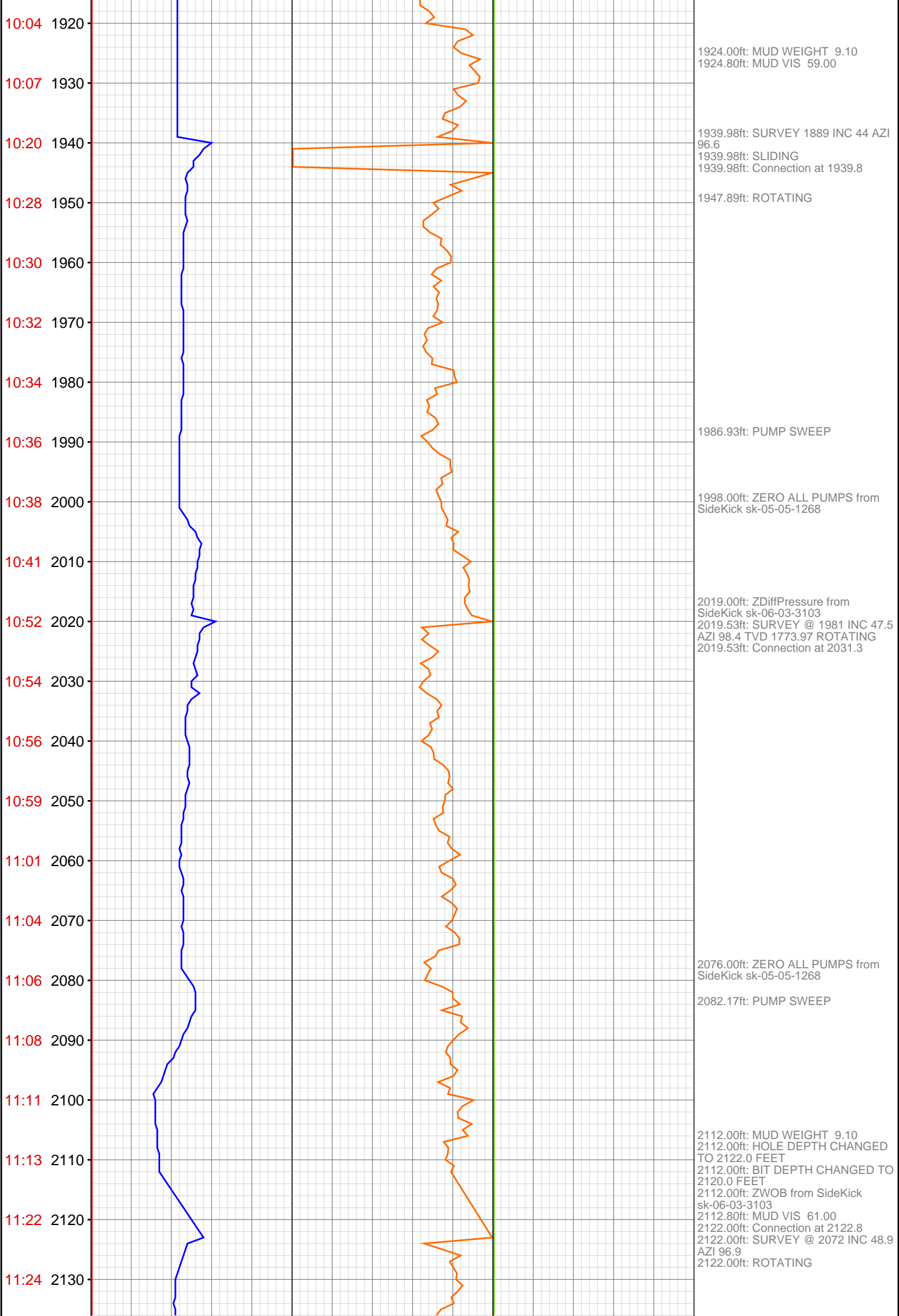
**OPERATOR:** EnCana Oil & Gas (USA), Inc.  
**WELL:** NPMF 07C-16 H17 696  
**FIELD:**  
**LOCATION:** QTRQTR:SENE SEC:17 TWP:6S RNG:96W R1E4S D3  
**COUNTRY:** USA  
**RIG:** Pat-UTI 303

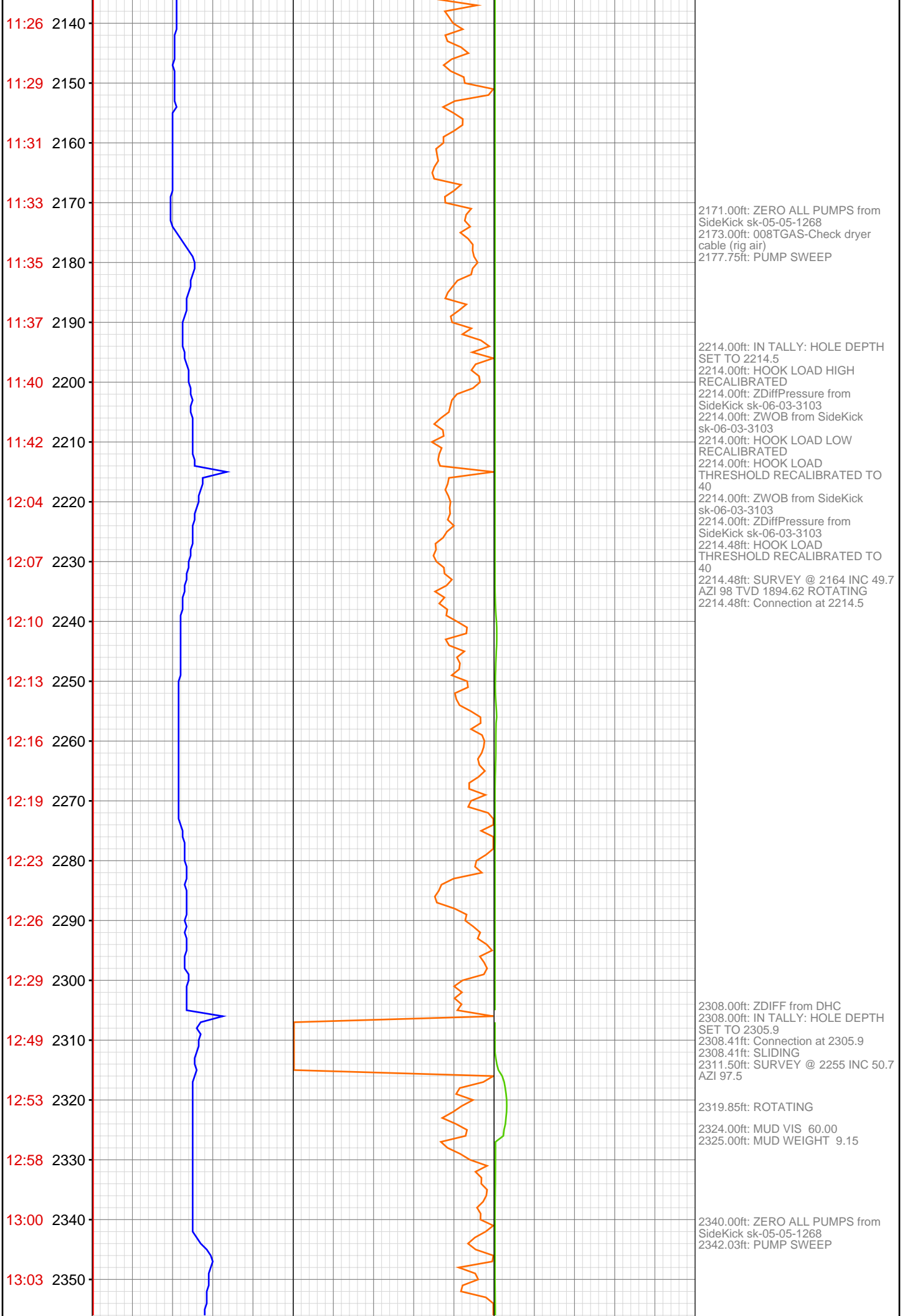
**CONTRACTOR:** Patterson-UTI Drilling Company  
**UNIQUE WELL ID:** 05 045 18703 01  
**SPUD DATE:** Mar 16, 2011 06:30  
**RELEASE DATE:**

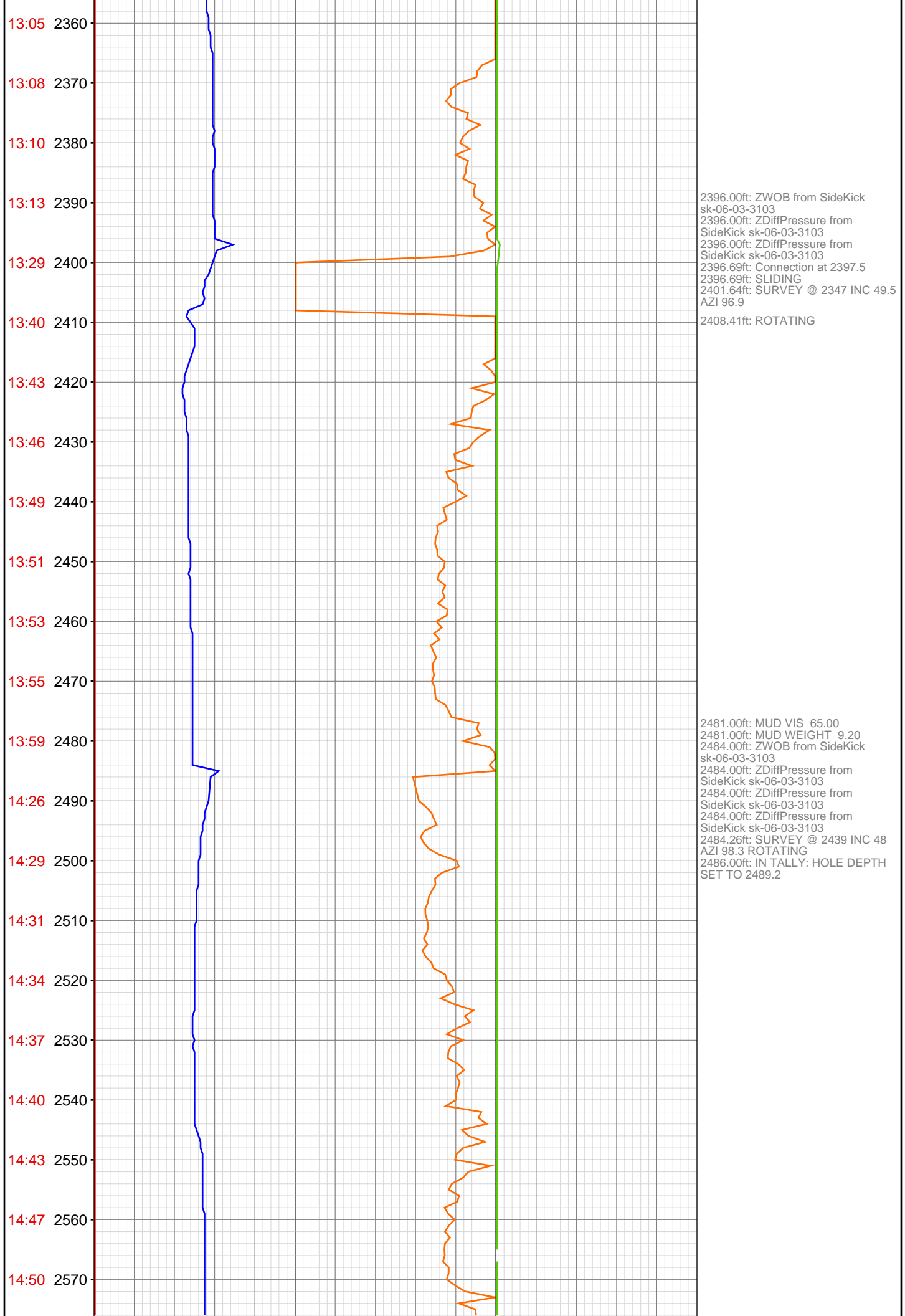




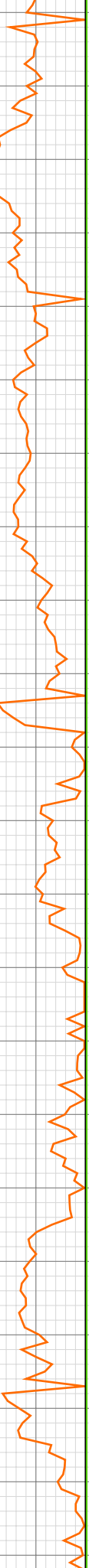
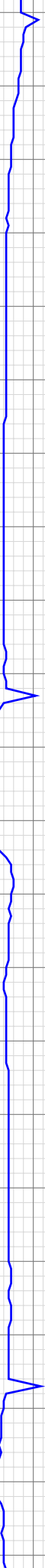








14:54 2580  
15:17 2590  
15:20 2600  
15:23 2610  
15:26 2620  
15:29 2630  
15:32 2640  
15:35 2650  
15:39 2660  
15:42 2670  
16:07 2680  
16:10 2690  
16:12 2700  
16:15 2710  
16:17 2720  
16:21 2730  
16:23 2740  
16:26 2750  
16:28 2760  
17:45 2770  
17:48 2780  
17:50 2790

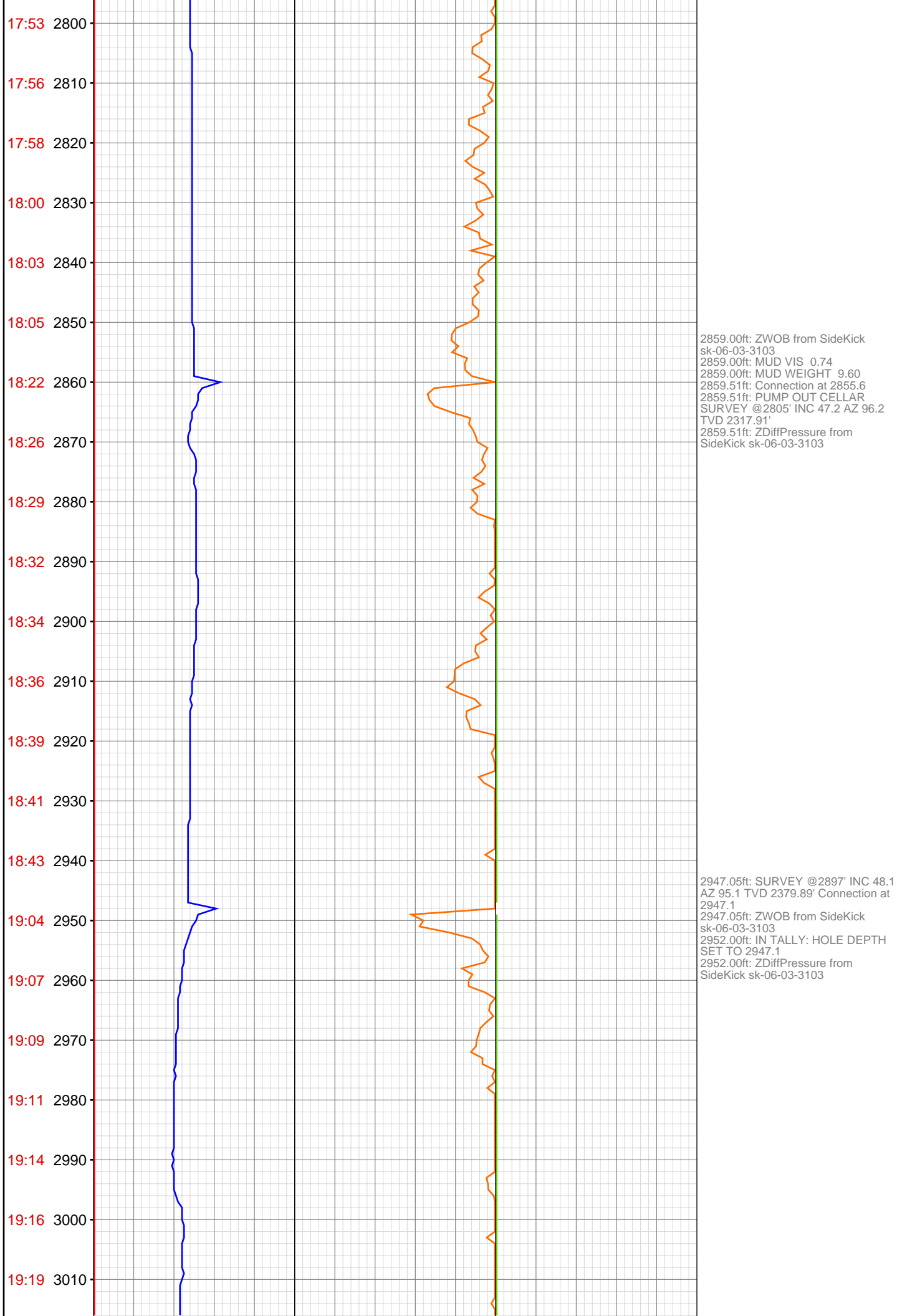


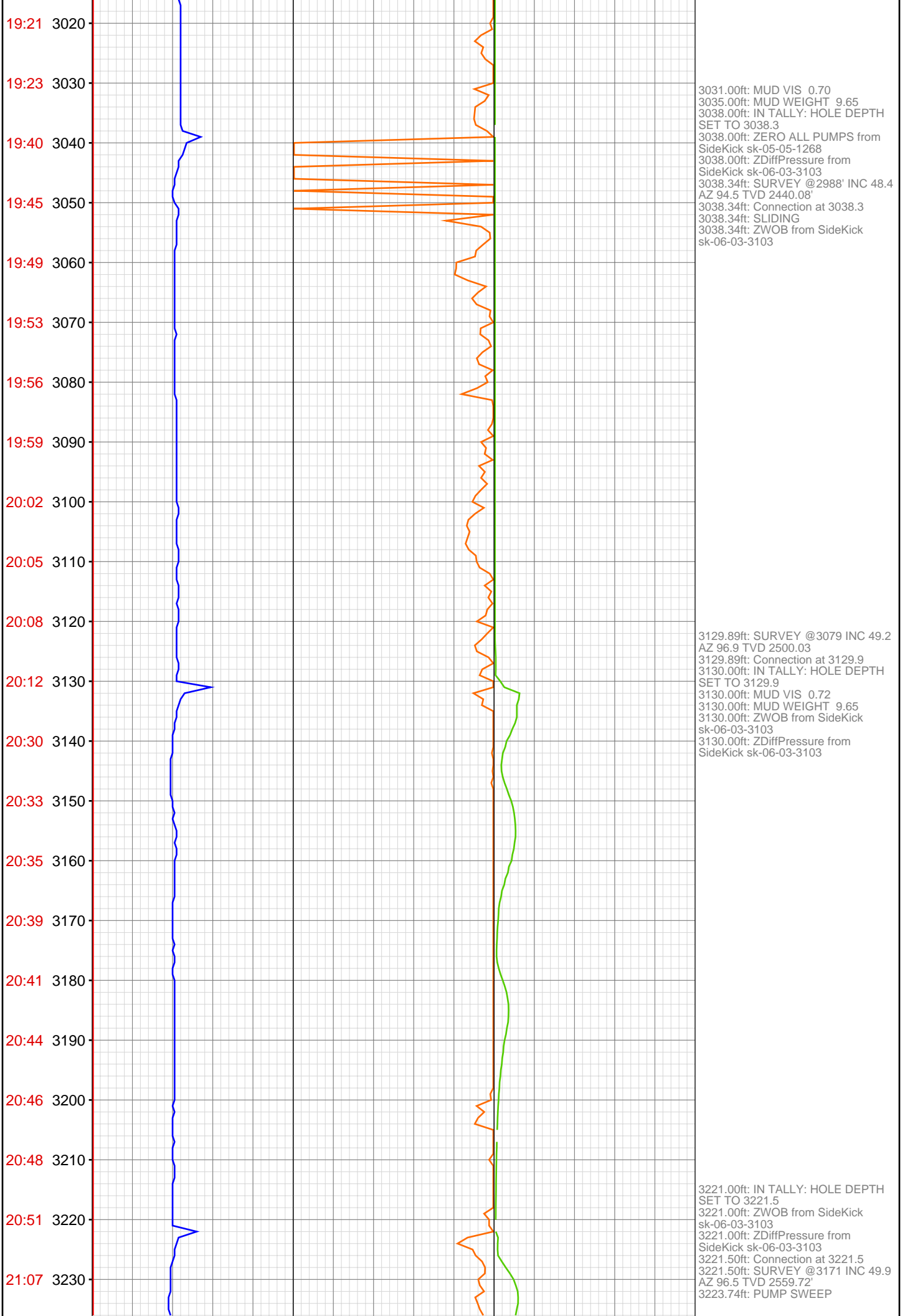
2580.00ft: ZDiffPressure from SideKick sk-06-03-3103  
2580.00ft: IN TALLY: HOLE DEPTH SET TO 2580.8  
2580.96ft: SURVEY @ 2530 INC 48.6 AZI 97.4 TVD 2133.08 ROTATING Connection at 2580.8

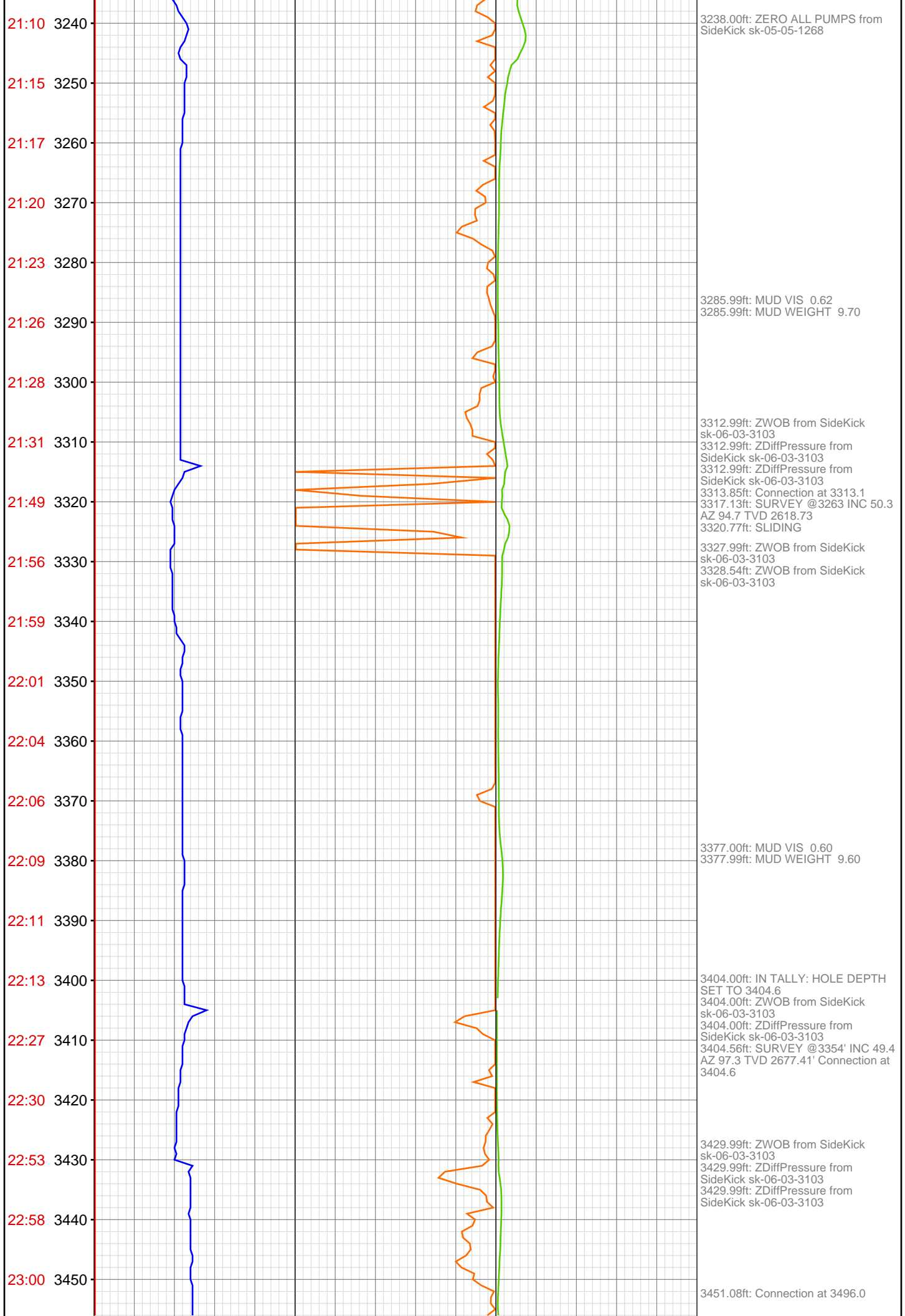
2672.00ft: MUD VIS 68.00  
2672.00ft: MUD WEIGHT 9.20  
2672.00ft: ZDiffPressure from SideKick sk-06-03-3103  
2672.00ft: ZWOB from SideKick sk-06-03-3103  
2672.94ft: SURVEY @ 2622 INC 47.9 AZI 96.7 ROTATING  
2672.94ft: Connection at 2672.4

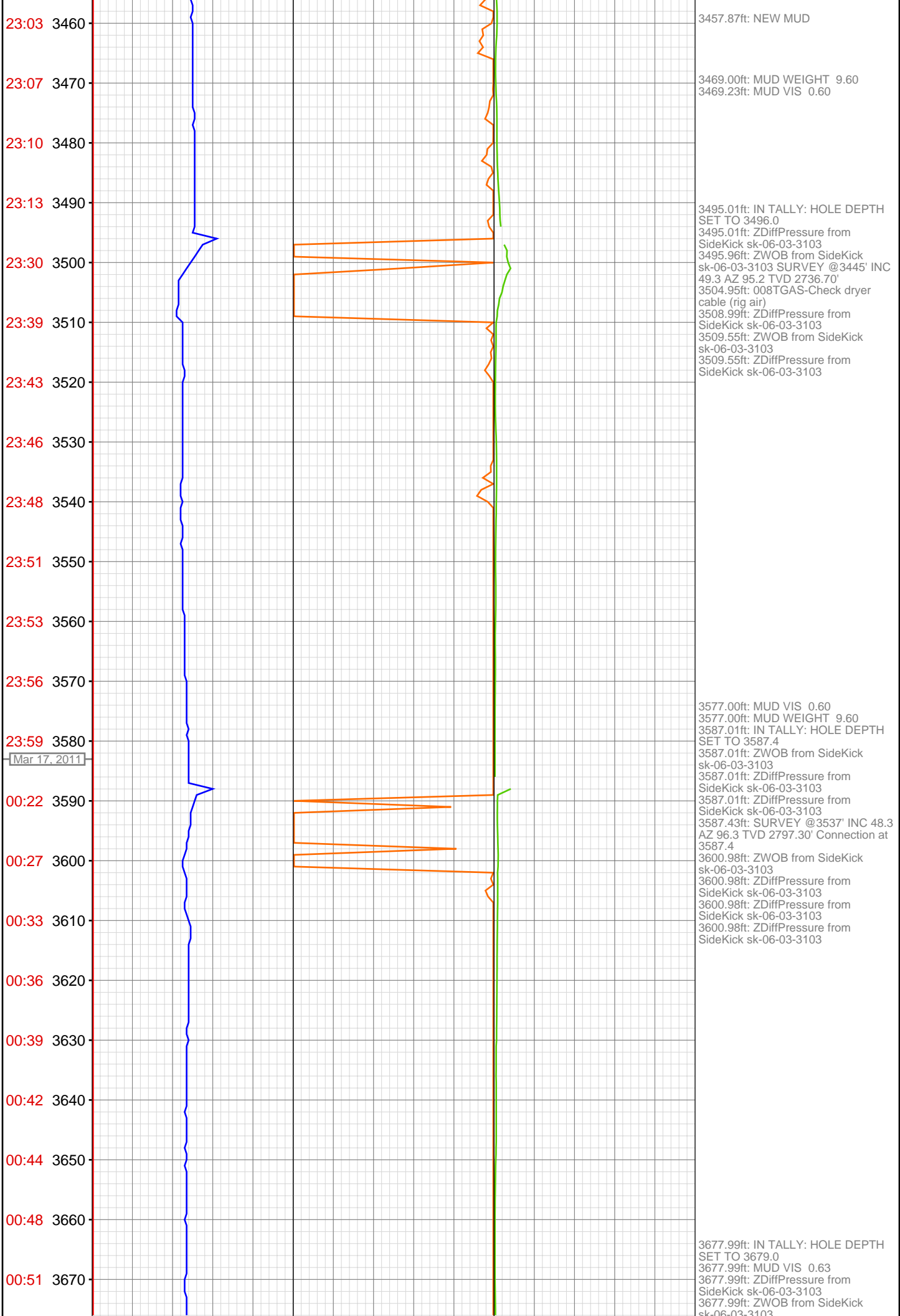
2688.37ft: PUMP SWEEP  
2690.00ft: ZERO ALL PUMPS from SideKick sk-05-05-1268

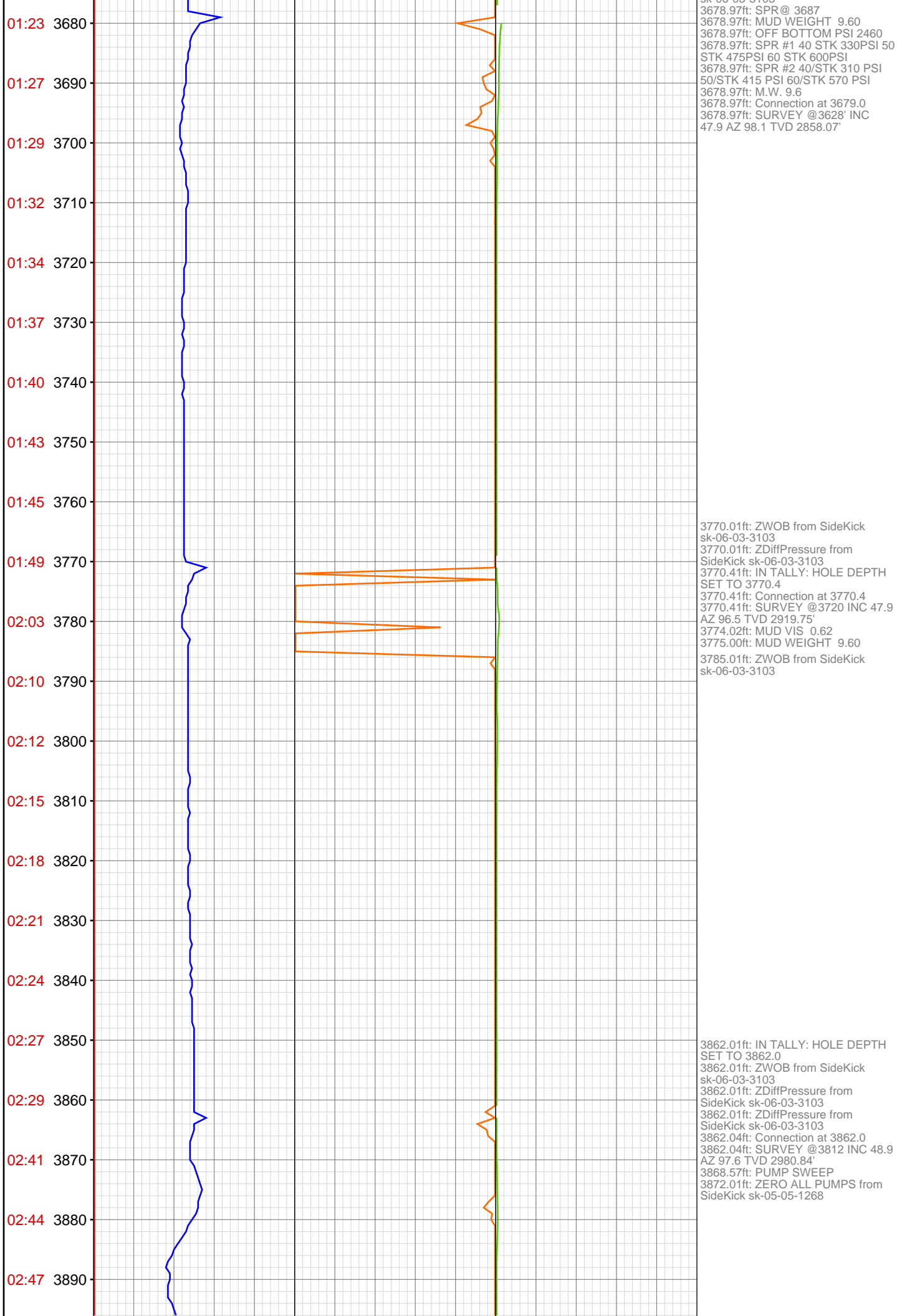
2765.83ft: RIG SERVICE  
2766.00ft: MUD VIS 69.00  
2766.00ft: MUD WEIGHT 9.30  
2766.00ft: 021TGAS 05121646 SW0.28 HW25.00 - 35 days on  
2766.00ft: 008TGAS-Check dryer cable (rig air)  
2766.00ft: ZWOB from SideKick sk-06-03-3103  
2766.08ft: Connection at 2764.0  
2766.08ft: SURVEY @ 2713 INC 47.5 AZI 96.2 TVD 2255.58 ROTATING  
2766.08ft: ZDiffPressure from SideKick sk-06-03-3103

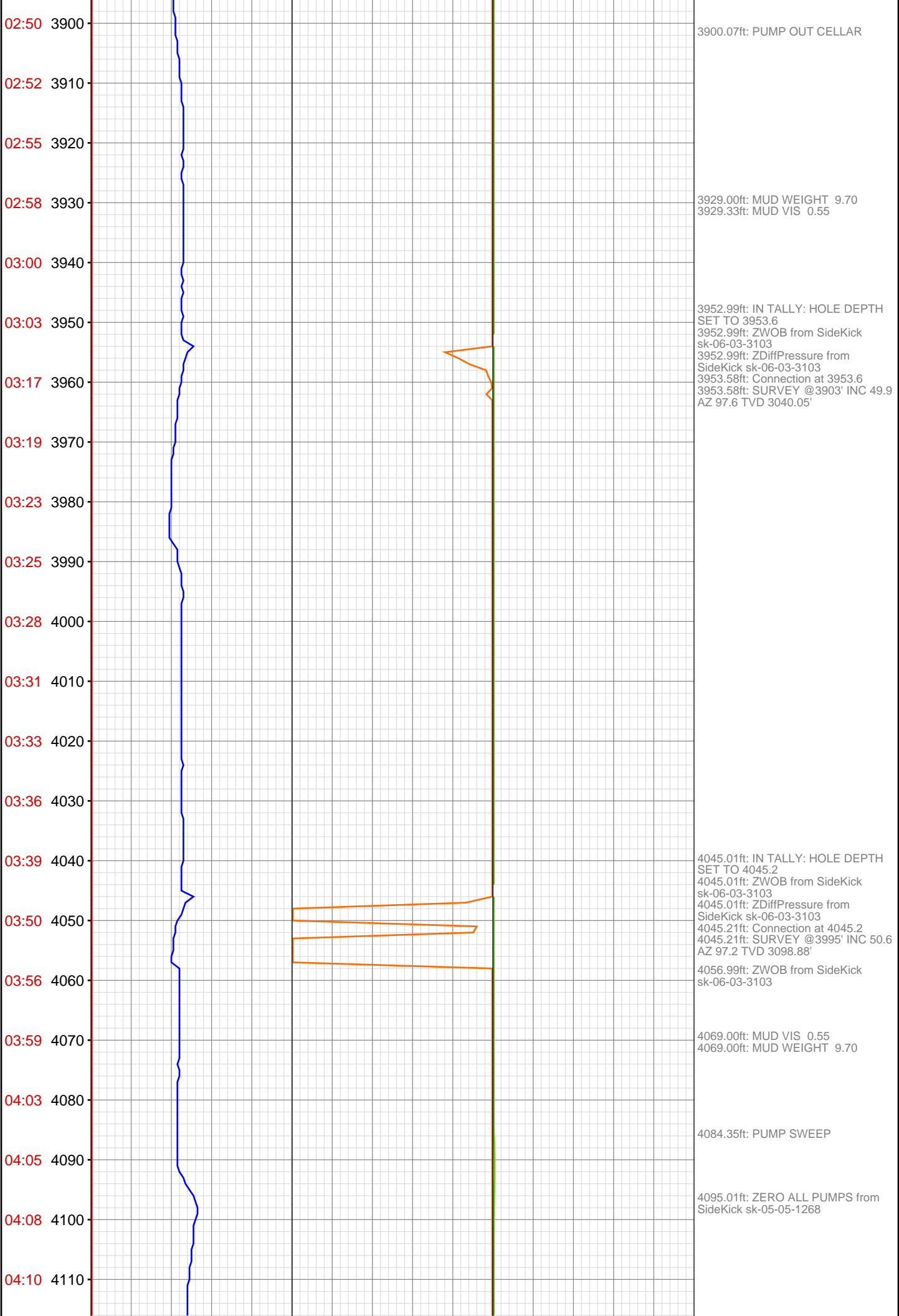




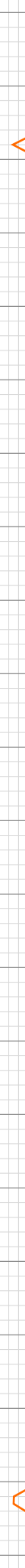








04:13 4120  
04:16 4130  
04:32 4140  
04:35 4150  
04:37 4160  
04:40 4170  
04:43 4180  
04:46 4190  
04:48 4200  
04:51 4210  
04:54 4220  
05:17 4230  
05:19 4240  
05:22 4250  
05:24 4260  
05:27 4270  
05:30 4280  
05:33 4290  
05:35 4300  
05:38 4310  
05:41 4320  
05:58 4330



4135.99ft: IN TALLY: HOLE DEPTH  
SET TO 4136.8  
4135.99ft: ZWOB from SideKick  
sk-06-03-3103  
4135.99ft: ZDiffPressure from  
SideKick sk-06-03-3103  
4135.99ft: ZDiffPressure from  
SideKick sk-06-03-3103  
4136.81ft: SURVEY @4086 INC 49.2  
AZ 96.8 TVD 3157.50' Connection at  
4136.8

4187.99ft: MUD VIS 0.55  
4189.01ft: MUD WEIGHT 9.70

4228.31ft: Connection at 4228.3  
4229.00ft: IN TALLY: HOLE DEPTH  
SET TO 4228.3  
4229.00ft: ZWOB from SideKick  
sk-06-03-3103  
4229.00ft: ZDiffPressure from  
SideKick sk-06-03-3103

4293.64ft: 008TGAS-Check dryer  
cable (rig air)

4319.95ft: Connection at 4319.9  
4319.95ft: SURVEY @4269' INC 50.2  
AZ 96.1 TVD 3276.23'  
4320.01ft: IN TALLY: HOLE DEPTH  
SET TO 4320.0  
4320.01ft: ZWOB from SideKick  
sk-06-03-3103  
4320.01ft: ZDiffPressure from  
SideKick sk-06-03-3103

