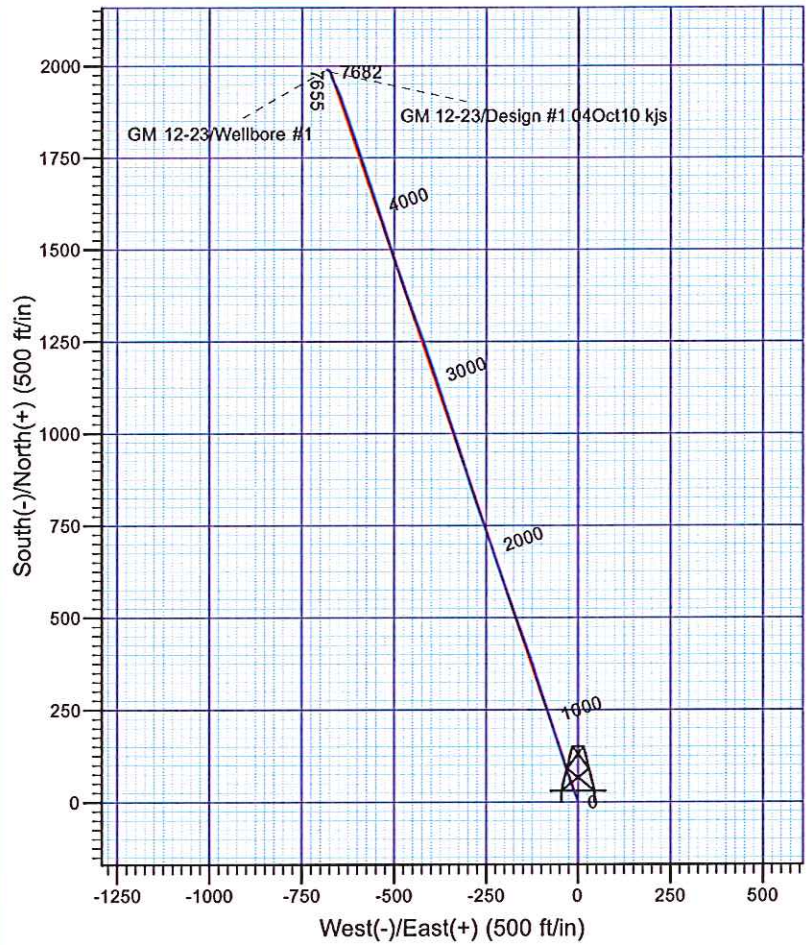
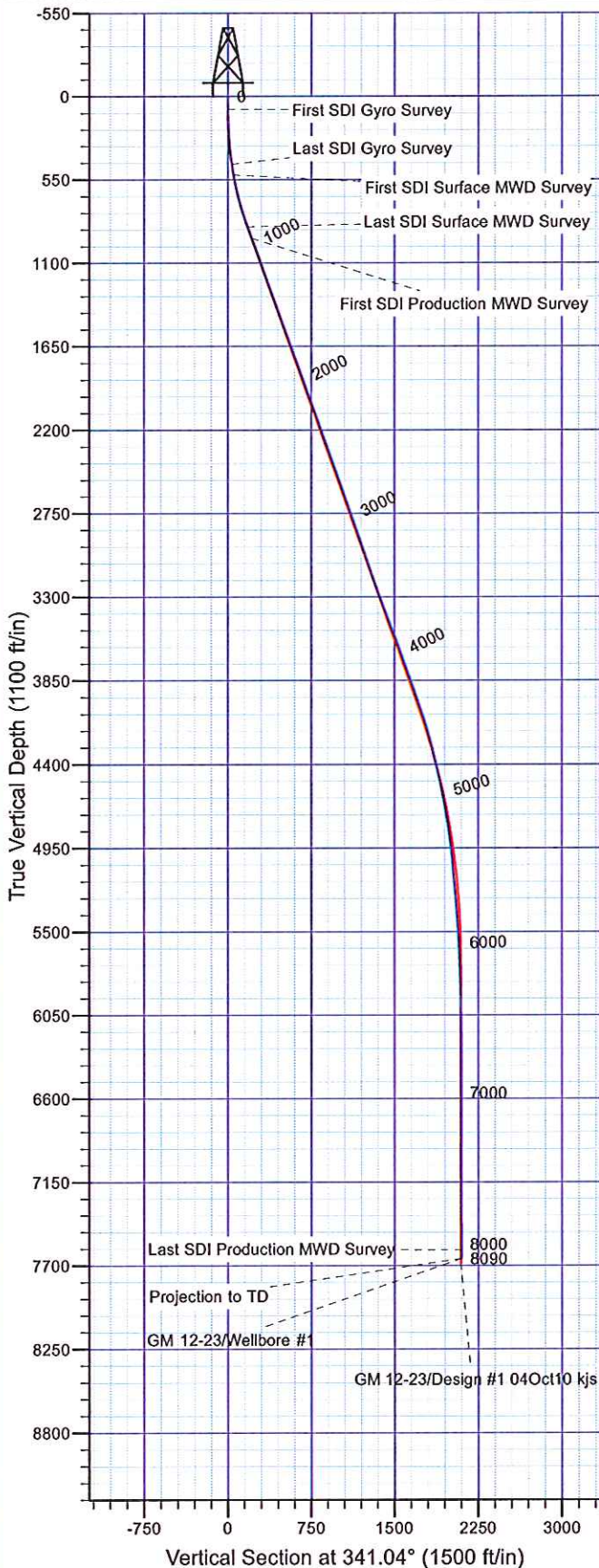




**Scientific Drilling**  
Rocky Mountain Operations

Company: Williams Production Co.  
Project: Garfield County, CO NAD83  
Site: MV 10-23 Pad  
Well: GM 12-23  
Wellbore: Wellbore #1  
Design: Wellbore #1



#### Well Details: GM 12-23

TVD Reference: KELLY BUSHING @ 6002.01ft (Nabors 576 (26' RKB) kjs) Level: 5976.01  
+N/-S +E/-W Northing Easting Latitude Longitude Slot  
0.00 0.00 1619659.35 2271215.81 39° 30' 22.666 N 108° 4' 59.632 W B3

#### REFERENCE INFORMATION

Co-ordinate (N/E) Reference: Well GM 12-23 - Slot B3, True North  
Vertical (TVD) Reference: KELLY BUSHING @ 6002.01ft (Nabors 576 (26' RKB) kjs)  
Section (VS) Reference: Slot - B3(0.00N, 0.00E)  
Measured Depth Reference: KELLY BUSHING @ 6002.01ft (Nabors 576 (26' RKB) kjs)  
Calculation Method: Minimum Curvature

#### PROJECT DETAILS: Garfield County, CO NAD83

Geodetic System: US State Plane 1983  
Datum: North American Datum 1983  
Ellipsoid: GRS 1980  
Zone: Colorado Central Zone

System Datum: Mean Sea Level

Plan: Wellbore #1

10:27, July 11 2011  
Created By: Janie Cooke