

Well

DINNER 6-5-14

Operator EnCana Oil & Gas (USA) Inc.
Location NE SE Section 14-T4N-R66W
County Weld
State Colorado
Field Wattenberg
Footages 1768' FSL & 860' FEL
Top of Prod Zone: 1989' FSL & 1321' FEL
Bottom of Hole: 1990' FSL & 1321' FEL

Spud Date 01-06-2005
TD Date 01-10-2005

Log Tops

Sussex 4363'
Shannon 4865'
Sussex Marker 4516'
Sharon Springs 6907'
Niobrara 6938'
Codell 7250'
Log TD 7515'

Production Casing and Cement

Set @ 7465'
Cemented with 175 sxs

DV Tool

Set @ 4740'
Cemented with 315 sxs

CFP

set @ 7120' on 1/2/2012
Drilled out on 2/16/2012

CIBP

Set @ 7310' on 1/2/2012

Production Tubing

Set @ 7231' on 2/16/12

CFP

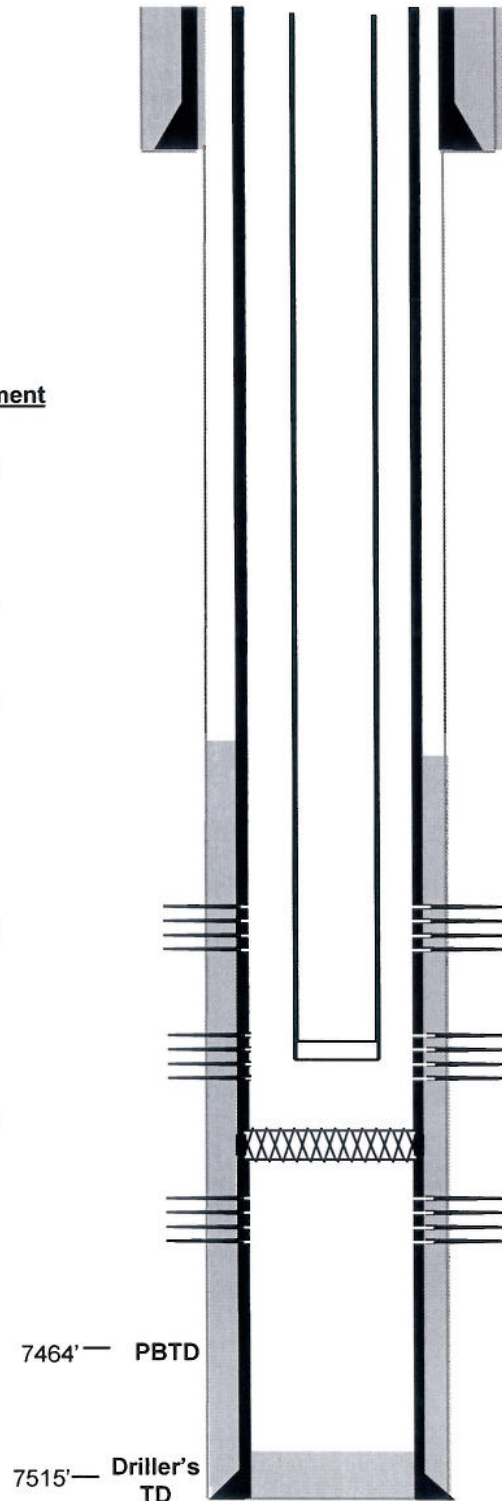
Set @ 7108'
01-17-05
Drilled out on 02-16-05

Surface Casing

Set @ 461'
Cemented with 240 sxs

Main Hole

7-7/8" to TD



Niobrara-Codell Refrac 2012

Frac Niobrara 6940' – 6960', 7040' – 7060' w/ 157,290 gal fluid and 250,700# sand 01-02-12

Frac Codell 7250' – 7266', with 120,346 gal frac fluid and 251,400# sand 01-02-12

Niobrara-Codell Perfs

Niobrara 6940' – 6960', 7040' – 7060', 4 spf, 160 holes
Frac'd the Niobrara w/ 209,452 gal fluid and 308,000# sand 01-17-05

Codell 7250' – 7266', 4 spf, 64 holes

Frac'd the Codell 7250' – 7266' with the Greenhorn, 7370' – 7400' with 155,400 gal frac fluid and 311,200# sand 01-17-05

Greenhorn Perfs

7370' – 7400', 2 spf, 60 holes
Frac'd the Greenhorn 7370' – 7400' with the Codell 7250' – 7266' with 155,400 gal frac fluid and 311,200# sand 01-17-05