

Frac Wellbore Schematic Report

Well Name: ATREYU F35-33

Well Config: DEVIATED - ORIGINAL HOLE, 3/20/2012 11:16:29 AM

Well Header

API 05-123-25936	Business Unit WATTENBERG	Spud Date 7/30/2007	Well Configuration Type DEVIATED
Orig KB Elev (ft) 4,672.50	KB - GL / ... 12	Quarter Quarter NESE	Sec/Abs 34
	Twn/Sur... 5N	Range 65W	P & A Date

Comment

Directions To Well

CR 43& CR50 NORTH 7/10 MILE EAST 1 1/4 MILE SOUTH/WEST 3 /10 SOUTH INTO

Current PBTD (ftKB)

ORIGINAL HOLE - 7296.0

Bottom Hole Location

North-South Distance (ft)	From N or S Line	East-West Distance (ft)	From E or W Line
---------------------------	------------------	-------------------------	------------------

PBTDs

Date	Depth (ftKB)	Method	Comment
8/5/2007	7,296.1	CASING TALLY	FLOAT SHOE
9/11/2007	7,295.0	CASED HOLE LOG	DEPTH LOGGER

Wellbore Sections

Section	Size (in)	Act Top (ftKB)	Act Btm (ftKB)
SURFACE	12 1/4	12.0	500.0
PRODUCTION	7 7/8	500.0	7,313.0

Zone Statuses

Zone	Status Date	Status	Job
NIOBRARA	11/5/2007	PR	DRILLING/COMPLETION - ORIGI...
CODELL	11/5/2007	PR	DRILLING/COMPLETION - ORIGI...
CODELL	1/4/2012	PR	RE-FRAC, 11/4/2011 08:00

Casing Strings

Casing Description	Run Date	String OD (in)	String Wt (lbs/ft)	String Grade	Top (ftKB)	Set Depth (ftKB)
Surface	7/30/2007	8 5/8	24.00	J-55	12.0	483.0
Production	8/5/2007	4 1/2	11.60	M-80	12.0	7,313.0

Cement

Description	Top (ftKB)	Btm (ftKB)
SURFACE CASING CEMENT	12.0	483.0
PRODUCTION CASING CEMENT	1,643.0	7,313.0

Tubing Components

Item Description	OD (in)	Wt (lbs/ft)	Grade	Jts	Len (ft)
Pup Joint	2 3/8	4.70	J-55	2	20.00
EUE 8rd Tubing	2 3/8	4.70	J-55	230	7,120.19
Seal Nipple	2 3/8	4.70	J-55	1	0.80
Notched collar	2 3/8	4.70	J-55	1	0.71

Perforation Data

Zone	Bnch/Stg	Entered Shot Total	Top (ftKB)	Btm (ftKB)	Date
NIOBRARA, ORIGI...		64	6,890.0	6,906.0	10/17/2007
NIOBRARA, ORIGI...		64	7,004.0	7,020.0	10/17/2007
CODELL, ORIGINA...		56	7,166.0	7,180.0	9/27/2007

Stimulations & Treatments

Bnch/...	Date	Zone	Primary Job Type
	10/17/2007	NIOBRARA, ORIGINAL HOLE	DRILLING/COMPLETION - ORIGINAL

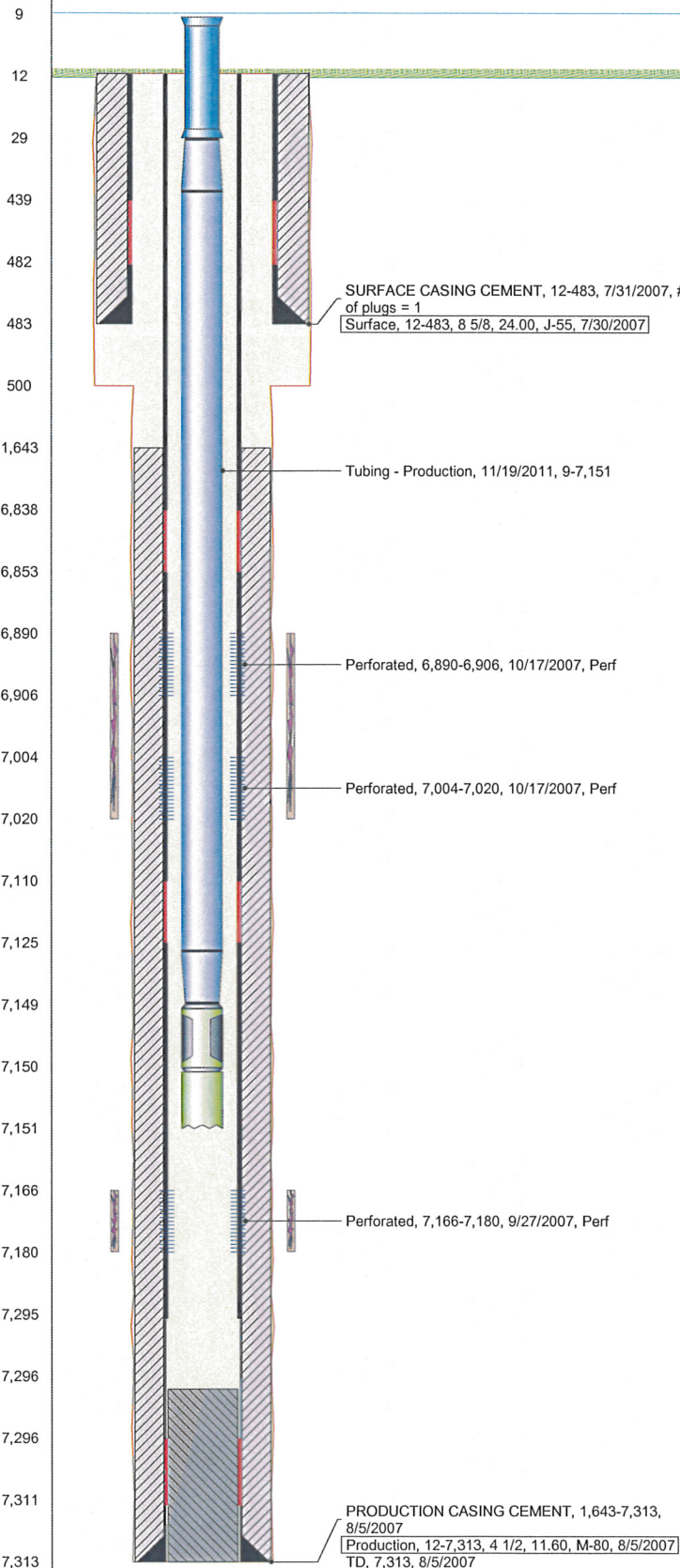
Comment

Total Add Amount	V (pumped) (gal)	V (slurry) (gal)	V (gas) (mcf)
Proppant LBS 250340 lb		169386	
Avg Treat Pressure (psi)	Max Treat Pressure (psi)	Avg Treat Rate (bbl/min)	Max Treat Rate (bbl/min)
4,520.0	4,808.0	50.40	50.60

Bnch/...	Date	Zone	Primary Job Type
	10/17/2007	CODELL, ORIGINAL HOLE	DRILLING/COMPLETION - ORIGINAL

Comment

Total Add Amount	V (pumped) (gal)	V (slurry) (gal)	V (gas) (mcf)
Proppant Ottawa 277700 lb		128184	
Avg Treat Pressure (psi)	Max Treat Pressure (psi)	Avg Treat Rate (bbl/min)	Max Treat Rate (bbl/min)
3,972.0	4,258.0	24.20	24.60



Well Name: ATREYU F35-33

Well Config: DEVIATED - ORIGINAL HOLE, 3/20/2012 11:16:29 AM

Stimulations & Treatments

Bnch/...	Date	Zone	Primary Job Type
	11/17/2011	CODELL, ORIGINAL HOLE	RE-FRAC
<p>Comment (CODELL): BREAK - 2591 @ 4.1 BPM. ISIP - 2456, 5 MIN -1604. INCREASED GEL LOADING 2 CP BECAUSE OF LEAKOFF. BLENDER HAD ISSUES WITH ACCURATE RATE IN BEGINNING OF JOB. CALCULATED ACTUAL VOLUME MOVED AND ADJUSTED TOTALS. FINAL ISIP - 3041. AVG VISC - 25.4, AVG PH - 10.24, AVG TEMP - 66.68. VISCOSITY BEGAN TO DROP RAPIDLY AT THE END OF 4 PSA PRIOR TO SCHEDULED FLUSH, CUT SAND AND WENT TO FLUSH BECAUSE VISCOSITY COULD DROP BELOW 18 CP. LEFT APPROX. 3,000 LBS OF SAND OUT OF 4 PSA BECAUSE OF VISC DROP. DUE TO PREVIOUS SLURRY TOTAL ADJUSTMENT STAGE TOTAL IN FLUSH WAS OFF AND INITIALLY CAME OFFLINE 10 BBLs SHORT. RESUMED FLUSH AND FLUSHED WELLBORE. CROSSLINK CHEMICALS WERE RUN DURING FIRST 15 BBLs OF FLUSH BECAUSE OF MISCOMMUNICATION AMONGST FRAC CREW MEMBERS.</p>			

Total Add Amount	V (pumped) (gal)	V (slurry) (gal)	V (gas) (mcf)
Proppant Ottawa	129622	140780	
247311.505 lb			
Avg Treat Pressure (psi)	Max Treat Pressure (psi)	Avg Treat Rate (bbl/min)	Max Treat Rate (bbl/min)
4,573.0	4,884.0	14.79	15.21

Other In Hole

Run Date	Description	OD (in)	Top (ftKB)	Btm (ftKB)

Logs

Date	Type	Top (ftKB)	Btm (ftKB)
8/4/2007	COMPENSATED DENSITY	483.0	4,535.0
8/4/2007	INDUCTION	483.0	4,555.0
9/11/2007	CBL/CCL/GR	12.5	7,290.0
9/12/2007	PULSED NEUTRON	483.0	7,290.0

