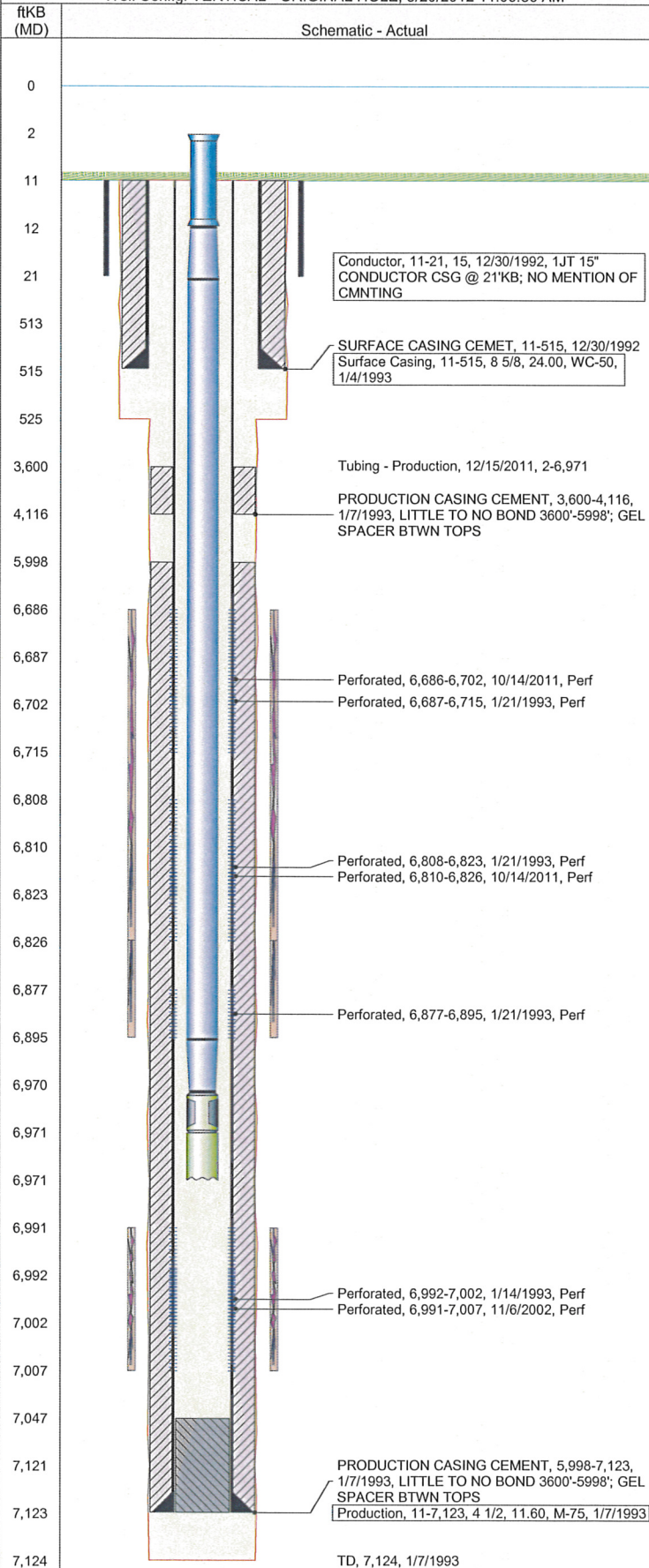


Frac Wellbore Schematic Report

Well Name: LORENZ FARMS 22-05B

Well Config: VERTICAL - ORIGINAL HOLE, 3/20/2012 11:06:36 AM



Well Header

API		Business Unit		Spud Date		Well Configuration Type	
05-123-15670		WATTENBERG		12/30/1992		VERTICAL	
Orig KB Elev (ft)	KB - GL / ...	Quarter Quarter	Sec/Abs	Twn/Sur...	Range	P & A Date	
4,637.00	11	SWNW	22	5N	65W		

Comment

NO CMT OVER SX, CONDUCTOR CSG @ 21' (1JT)
LITTLE TO NO CMT BOND 4000'-5998', GEL SPACER BTWN

Directions To Well

CR 43/54,N.3/4 MI.,E.THUR GRN.GATE(KEY 01),2/10.CROSS OVER
IRR.DITCH S.1/10,W.INTO.(SECOND INTERANCE IS FLAGGED IN FROM
HWY 34.IF OK FOR FRAC CREW,NEED TO USE FLAGED INTERANCE.)

Current PBDT (ftKB)

ORIGINAL HOLE - 7047.0

Bottom Hole Location

North-South Distance (ft)	From N or S Line	East-West Distance (ft)	From E or W Line

PBDTs

Date	Depth (ftKB)	Method	Comment
1/7/1993	7,047.0		PBDT ON DAILY RPT
1/14/1993	7,072.0	CASED HOLE LOG	DEPTH-LOGGER/CBL

Wellbore Sections

Section	Size (in)	Act Top (ftKB)	Act Btm (ftKB)
CONDUCTOR	12 1/4	11.0	21.0
SURFACE	12 1/4	21.0	525.0
PRODUCTION	7 7/8	525.0	7,124.0

Zone Statuses

Zone	Status Date	Status	Job
CODELL	2/17/1993	PR	DRILLING/COMPLETION - ORIGI...
NIOBRARA	2/17/1993	PR	DRILLING/COMPLETION - ORIGI...
CODELL	11/13/2002	PR	RE-FRAC, 11/4/2002 00:00
CODELL	10/13/2011	SI	RE-FRAC, 10/13/2011 06:00
NIOBRARA	11/10/2011	PR	RE-FRAC, 10/13/2011 06:00

Casing Strings

Casing Description	Run Date	String OD (in)	String Wt (lbs/ft)	String Grade	Top (ftKB)	Set Depth (ftKB)
Conductor	12/30/1992	15			11.0	21.0
Surface Casing	1/4/1993	8 5/8	24.00	WC-...	11.0	515.0
Production	1/7/1993	4 1/2	11.60	M-75	11.0	7,123.0

Cement

Description	Top (ftKB)	Btm (ftKB)
SURFACE CASING CEMET	11.0	515.0
PRODUCTION CASING CEMENT	3,600.0	4,116.0
PRODUCTION CASING CEMENT	5,998.0	7,123.0

Tubing Components

Item Description	OD (in)	Wt (lbs/ft)	Grade	Jts	Len (ft)
Pup Joint	2 3/8	4.70	N-80	1	10.00
Tubing	2 3/8	4.70	J-55	223	6,957.90
Seal Nipple	2 3/8	4.70	J-55	1	0.82
Notched collar	2 3/8	4.70	J-55	1	0.38

Perforation Data

Zone	Bnch/Stg	Entered Shot Total	Top (ftKB)	Btm (ftKB)	Date
NIOBRARA, ORIGI...	A	32	6,686.0	6,702.0	10/14/2011
NIOBRARA, ORIGI...	A	14	6,687.0	6,715.0	1/21/1993
NIOBRARA, ORIGI...	B	14	6,808.0	6,823.0	1/21/1993
NIOBRARA, ORIGI...	B	32	6,810.0	6,826.0	10/14/2011
NIOBRARA, ORIGI...	C	8	6,877.0	6,895.0	1/21/1993
CODELL, ORIGINA...		20	6,991.0	7,007.0	11/6/2002
CODELL, ORIGINA...		20	6,992.0	7,002.0	1/14/1993

Stimulations & Treatments

Bnch/...	Date	Zone	Primary Job Type
	1/16/1993	CODELL, ORIGINAL HOLE	DRILLING/COMPLETION - ORIGINAL

Comment

Total Add Amount	V (pumped) (gal)	V (slurry) (gal)	V (gas) (mcf)
Proppant 190000 lb		66570	
Avg Treat Pressure (psi)	Max Treat Pressure (psi)	Avg Treat Rate (bbl/min)	Max Treat Rate (bbl/min)
3,800.0	4,390.0	12.50	13.60

Frac Wellbore Schematic Report

Well Name: LORENZ FARMS 22-05B

Well Config: VERTICAL - ORIGINAL HOLE, 3/20/2012 11:06:36 AM

