

# Frac Wellbore Schematic Report

**Well Name: MCKENNEY 14-14**

Well Config: VERTICAL - ORIGINAL HOLE, 3/19/2012 3:36:07 PM

## Well Header

API	Business Unit		Spud Date		Well Configuration Type	
05-123-26512	WATTENBERG		5/1/2008		VERTICAL	
Orig KB Elev (ft)	KB - GL / ...	Quarter Quarter	Sec/Abs	Twn/Sur...	Range	P & A Date
4,691.00	16	SENE	14	6N	64W	
Comment						

Directions To Well  
59 & 70 S 4/10 W 1/10 INTO

Current PBTD (ftKB)  
ORIGINAL HOLE - 6960.0

## Bottom Hole Location

North-South Distance (ft)	From N or S Line	East-West Distance (ft)	From E or W Line

## PBTDs

Date	Depth (ftKB)	Method	Comment
5/6/2008	6,977.5	CASING TALLY	SHOE JOINT
5/22/2008	6,945.0	CASED HOLE LOG	DEPTH LOGGER

## Wellbore Sections

Section	Size (in)	Act Top (ftKB)	Act Btm (ftKB)
SURFACE	12 1/4	16.0	462.0
PRODUCTION	7 7/8	462.0	7,019.0

## Zone Statuses

Zone	Status Date	Status	Job
CODELL	6/9/2008	PR	DRILLING/COMPLETION - ORIGI...
NIOBRARA	6/9/2008	PR	DRILLING/COMPLETION - ORIGI...
CODELL	12/27/2011	PR	RE-FRAC, 11/18/2011 06:00

## Casing Strings

Casing Description	Run Date	String OD (in)	String Wt (lbs/ft)	String Grade	Top (ftKB)	Set Depth (ftKB)
Surface	5/1/2008	8 5/8	24.00		16.0	462.0
Production	5/5/2008	4 1/2	11.60	M-80	16.0	6,993.0

## Cement

Description	Top (ftKB)	Btm (ftKB)
SURFACE CASING CEMENT	16.0	462.0
PRODUCTION CASING CEMENT	16.0	6,993.0

## Tubing Components

Item Description	OD (in)	Wt (lbs/ft)	Grade	Jts	Len (ft)
EUE 8rd Tubing	2 3/8	4.70	J-55	220	6,822.25
Seating Nipple	2 3/8		N-80	1	1.10
Notched collar	2 3/8		J-55	1	0.40

## Perforation Data

Zone	Bnch/Stg	Entered Shot Total	Top (ftKB)	Btm (ftKB)	Date
NIOBRARA, ORIGI...		68	6,674.0	6,691.0	5/15/2008
CODELL, ORIGINA...		44	6,850.0	6,861.0	5/16/2008

## Stimulations & Treatments

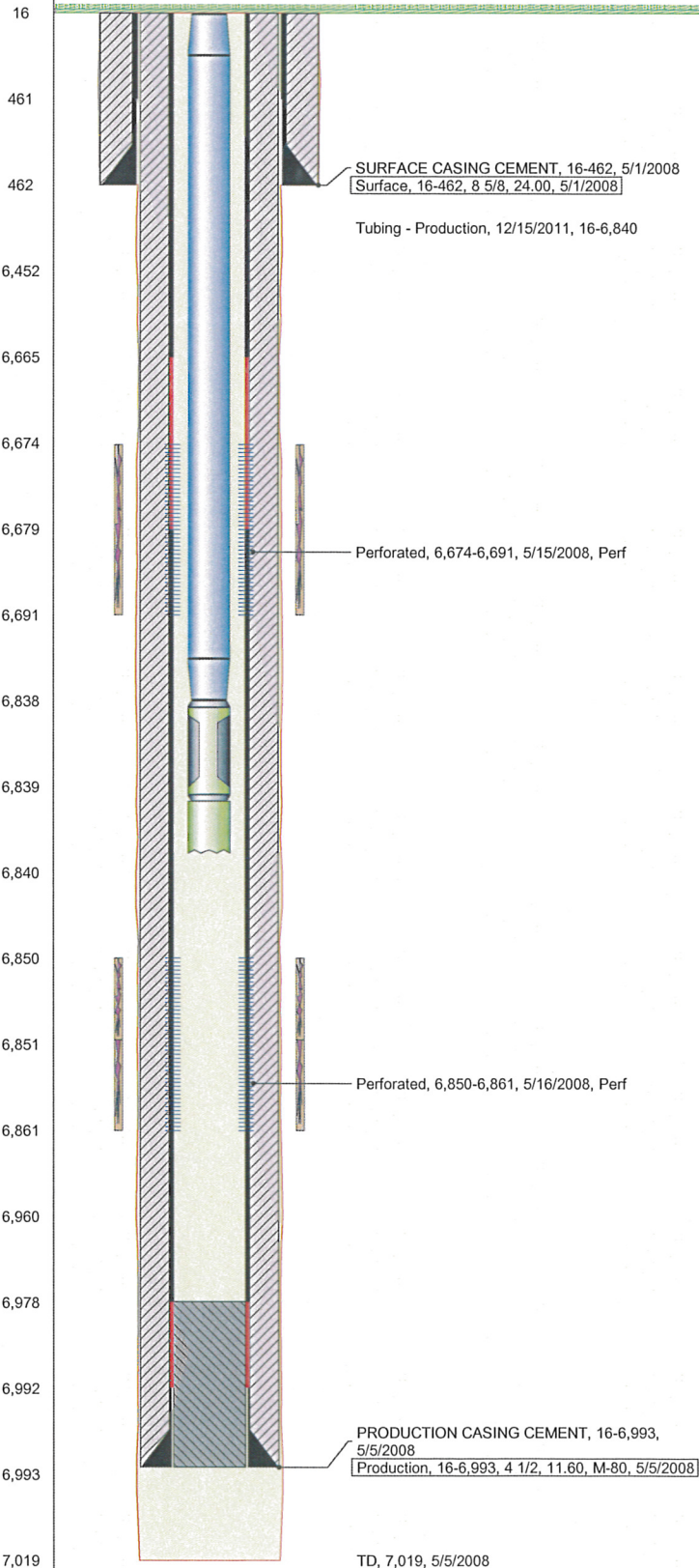
Bnch/...	Date	Zone	Primary Job Type
	5/16/2008	NIOBRARA, ORIGINAL HOLE	DRILLING/COMPLETION - ORIGINAL
Comment			

Total Add Amount	V (pumped) (gal)	V (slurry) (gal)	V (gas) (mcf)
Proppant 226282 lb; Proppant SB Excel 12000 lb; 238282 238282		97314	

Avg Treat Pressure (psi)	Max Treat Pressure (psi)	Avg Treat Rate (bbl/min)	Max Treat Rate (bbl/min)
4,870.0	5,600.0	63.10	

Bnch/...	Date	Zone	Primary Job Type
	5/16/2008	CODELL, ORIGINAL HOLE	DRILLING/COMPLETION - ORIGINAL
Comment			

Total Add Amount	V (pumped) (gal)	V (slurry) (gal)	V (gas) (mcf)
Proppant 257339 lb		74340	
Avg Treat Pressure (psi)	Max Treat Pressure (psi)	Avg Treat Rate (bbl/min)	Max Treat Rate (bbl/min)
3,740.0	4,586.0	30.50	



Well Name: MCKENNEY 14-14

Well Config: VERTICAL - ORIGINAL HOLE, 3/19/2012 3:36:07 PM

## Stimulations & Treatments

Bnch/...	Date	Zone	Primary Job Type
	12/5/2011	CODELL, ORIGINAL HOLE	RE-FRAC
Comment ( CODELL REFRAC ) REVERSE STEP RATE @ 140 AWAY , ISIP = 2716 , 44 PERFS OPEN , PERF FRICTION = 35 , NEAR WELLBORE FRICTION = 854 , PIPE FRICTION = 1574 , TOTAL FRICTION = 2509 , 5 MIN = 1681 . (POST - JOB JOB WENT WELL NO ISSUES TO REPORT , FINAL 5 MIN = 3365 FINAL F.G. - 0.935			

Total Add Amount	V (pumped) (gal)	V (slurry) (gal)	V (gas) (mcf)
Proppant Ottawa 244116 lb	124698	135744	
Avg Treat Pressure (psi)	Max Treat Pressure (psi)	Avg Treat Rate (bbl/min)	Max Treat Rate (bbl/min)
4,681.0	5,243.0	14.67	15.12

## Other In Hole

Run Date	Description	OD (in)	Top (ftKB)	Btm (ftKB)

## Logs

Date	Type	Top (ftKB)	Btm (ftKB)
5/5/2008	COMPENSATED DENSITY	3,500.0	6,988.0
5/5/2008	INDUCTION	463.0	7,008.0
5/22/2008	ACOUSTIC	50.0	6,943.0

