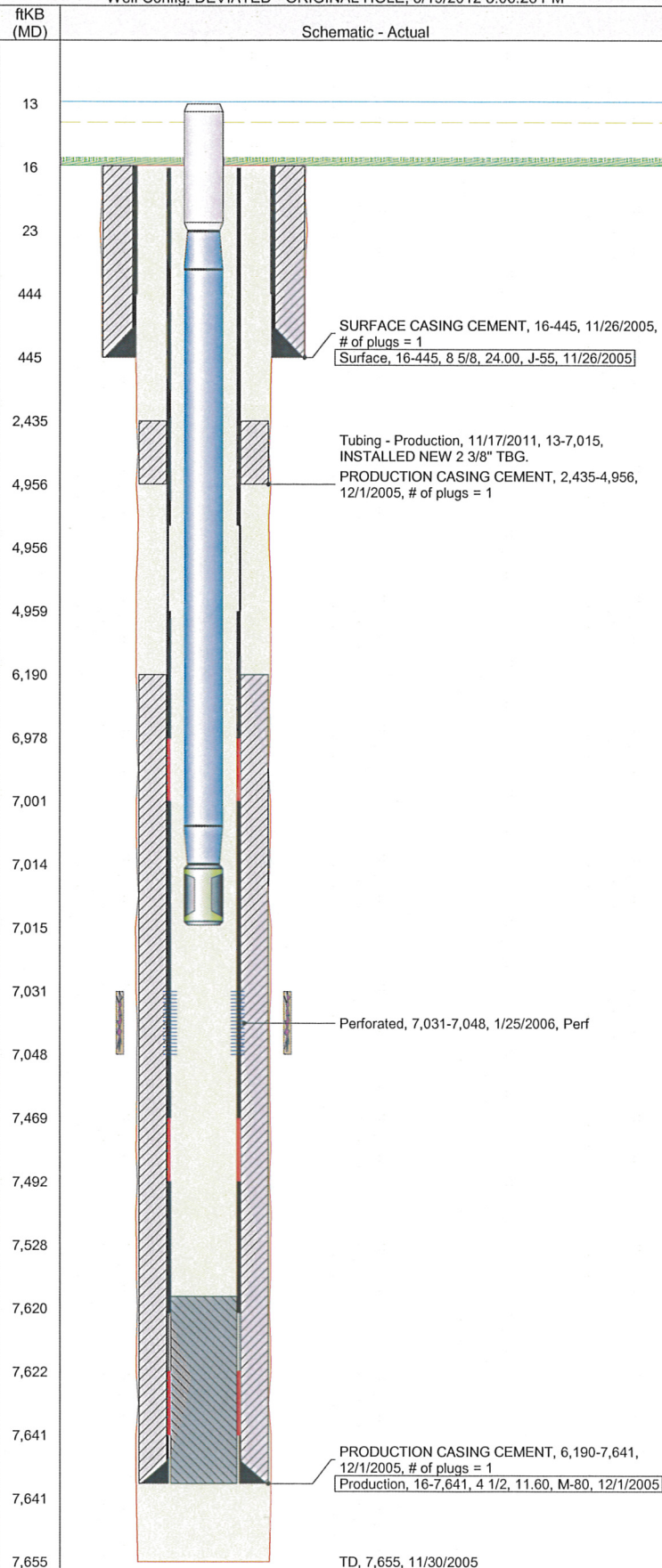


Well Name: STATE M36-05

Well Config: DEVIATED - ORIGINAL HOLE, 3/19/2012 3:06:28 PM



Well Header

API		Business Unit		Spud Date		Well Configuration Type	
05-123-23255		WATTENBERG		11/25/2005		DEVIATED	
Orig KB Elev (ft)	KB - GL / ...	Quarter Quarter	Sec/Abs	Twn/Sur...	Range	P & A Date	
4,741.00	16	SWNW	36	6N	67W		
Comment							
DV TOOL @ 4656', DRILLED OUT 1/24/06 LOC VERY RUTTY AND MUDDY NEED CAT IF ANY MOISTURE HAS COME DOWN							

Directions To Well

64 3/4 & CR 23 RIGHT AT VESTAS FACTORY SOUTH 1 4/10 MILE THROUGH GREEN GATES SOUTH EAST /EAST NORTH WEST INTO

Current PBTD (ftKB)

ORIGINAL HOLE - 7527.8

Bottom Hole Location

North-South Distance (ft)	From N or S Line	East-West Distance (ft)	From E or W Line
---------------------------	------------------	-------------------------	------------------

PBTDs

Date	Depth (ftKB)	Method	Comment
12/1/2005	7,620.0	CASING TALLY	FLOAT COLLAR
1/25/2006	7,603.0	CASED HOLE LOG	DEPTH LOGGER

Wellbore Sections

Section	Size (in)	Act Top (ftKB)	Act Btm (ftKB)
SURFACE	12 1/4	16.0	445.0
PRODUCTION	7 7/8	445.0	7,655.0

Zone Statuses

Zone	Status Date	Status	Job
CODELL	3/10/2006	PR	DRILLING/COMPLETION - ORIGI...
CODELL	12/20/2011	PR	RE-FRAC, 11/3/2011 06:00

Casing Strings

Casing Description	Run Date	String OD (in)	String Wt (lbs/ft)	String Grade	Top (ftKB)	Set Depth (ftKB)
Surface	11/26/2005	8 5/8	24.00	J-55	16.0	445.0
Production	12/1/2005	4 1/2	11.60	M-80	16.1	7,641.0

Cement

Description	Top (ftKB)	Btm (ftKB)
SURFACE CASING CEMENT	16.0	445.0
PRODUCTION CASING CEMENT	2,435.0	4,956.0
PRODUCTION CASING CEMENT	6,190.0	7,641.0

Tubing Components

Item Description	OD (in)	Wt (lbs/ft)	Grade	Jts	Len (ft)
Tubing Pup Joint	2 3/8	4.70	J-55	1	10.00
EUE 8rd Tubing	2 3/8	4.70	J-55	228	6,990.79
Notch Seat Nipple	2 3/8	4.70	N-80	1	1.25

Perforation Data

Zone	Bnch/Stg	Entered Shot Total	Top (ftKB)	Btm (ftKB)	Date
CODELL, ORIGINA...		68	7,031.0	7,048.0	1/25/2006

Stimulations & Treatments

Bnch/...	Date	Zone	Primary Job Type
	2/2/2006	CODELL, ORIGINAL HOLE	DRILLING/COMPLETION - ORIGINAL

Comment

Total Add Amount	V (pumped) (gal)	V (slurry) (gal)	V (gas) (mcf)
Proppant Ottawa 270540 lb		128520	
Avg Treat Pressure (psi)	Max Treat Pressure (psi)	Avg Treat Rate (bbl/min)	Max Treat Rate (bbl/min)
7,221.0	7,402.0	17.40	18.60

Bnch/...	Date	Zone	Primary Job Type
	11/15/2011	CODELL, ORIGINAL HOLE	RE-FRAC

Comment

(CODELL RF): JOB WENT WELL WITH NO ISSUES TO REPORT.

Total Add Amount	V (pumped) (gal)	V (slurry) (gal)	V (gas) (mcf)
Proppant Ottawa 248555.399 lb	132628	143894	
Avg Treat Pressure (psi)	Max Treat Pressure (psi)	Avg Treat Rate (bbl/min)	Max Treat Rate (bbl/min)
4,487.0	4,814.0	14.66	15.02

Other In Hole

Run Date	Description	OD (in)	Top (ftKB)	Btm (ftKB)

Logs

Date	Type	Top (ftKB)	Btm (ftKB)
11/30/2005	COMPENSATED DENSITY	1,700.0	7,629.0

Well Name: **STATE M36-05**

Well Config: DEVIATED - ORIGINAL HOLE, 3/19/2012 3:06:28 PM

Logs

ftKB (MD)	Schematic - Actual	Date	Type	Top (ftKB)	Btm (ftKB)
		11/30/2005	INDUCTION	445.0	7,649.0
		1/25/2006	CBL/CCL/GR	2,300.0	76,020.0

