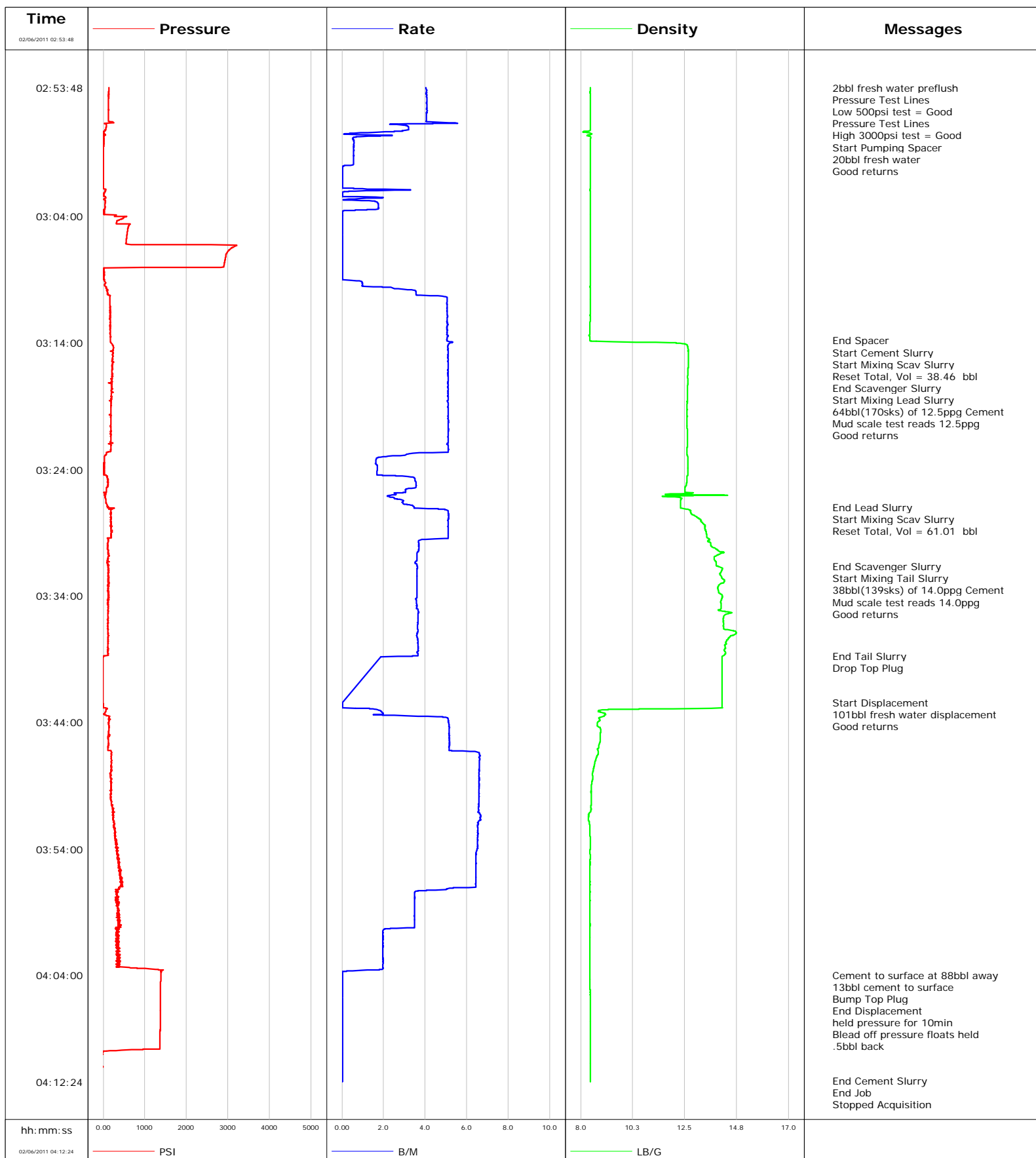


Well MF06B-16 H17 696
Field N. PARACHUTE
Engineer Dustin Cyrus Krueger
Country United States

Client Encana
SIR No. 489686
Job Type 9 5/8 Surface @ 1323'
Job Date 02-06-2011



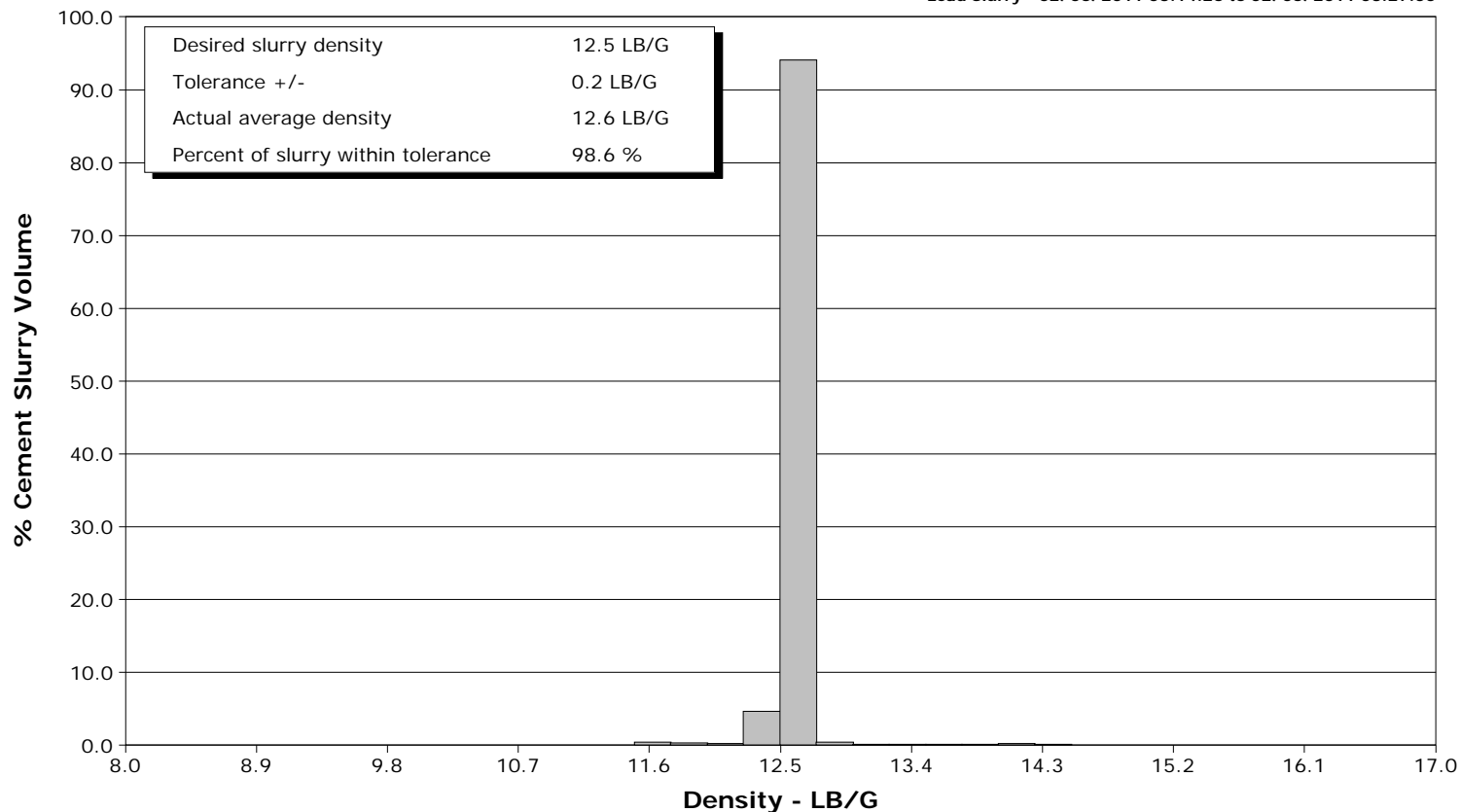
Schlumberger

Cementing Qa/Qc Density Report

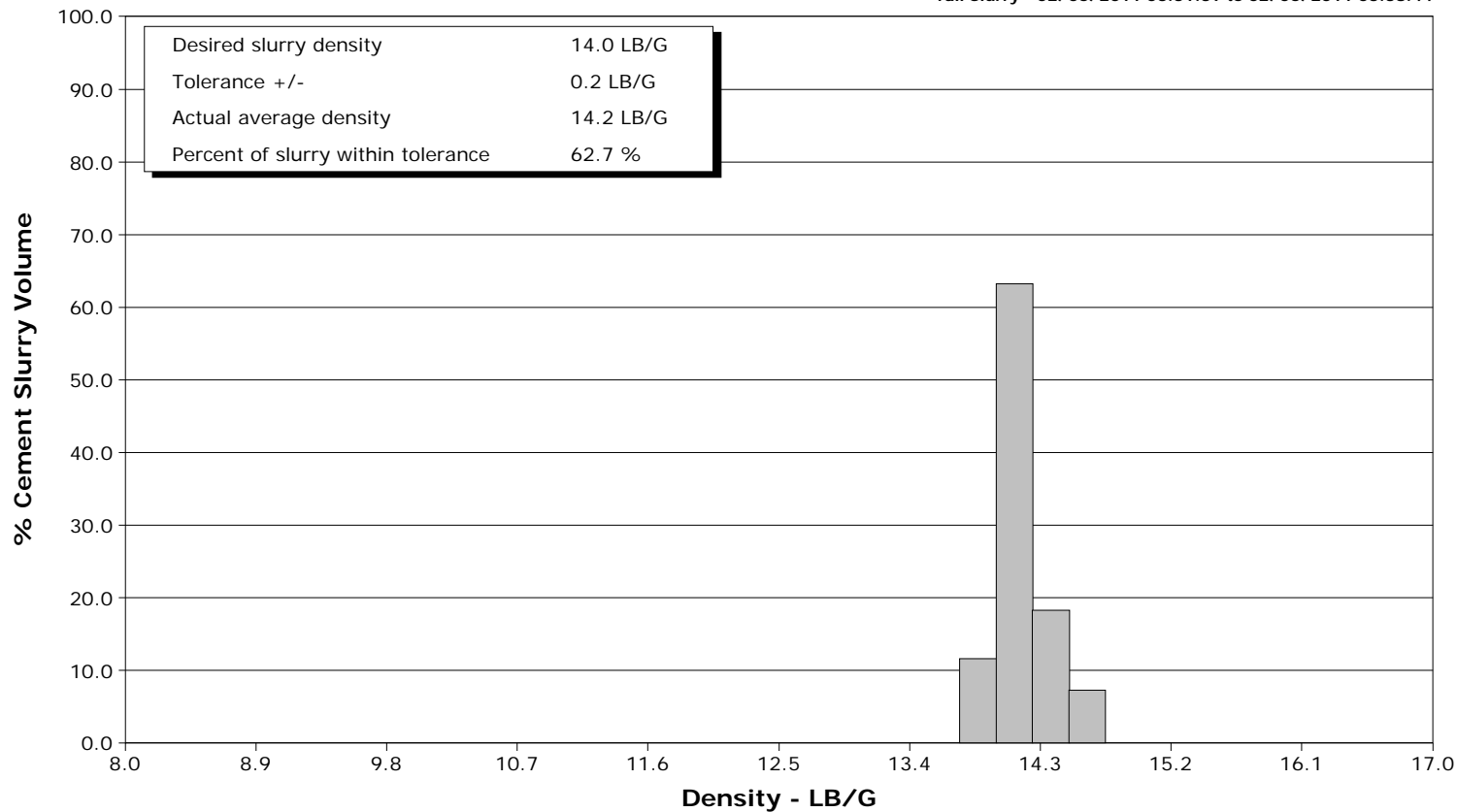
Well MF06B-16 H17 696
Field N. PARACHUTE
Engineer Dustin Cyrus Krueger
Country United States

Client Encana
SIR No. 489686
Job Type 9 5/8 Surface @ 1323'
Job Date 02-06-2011

Lead Slurry - 02/06/2011 03:14:26 to 02/06/2011 03:27:00



Tail Slurry - 02/06/2011 03:31:39 to 02/06/2011 03:38:44



Page 1 of 3

Well MFO6B-16 H17 696 MFO6B-16 H17 696			Field N. PARACHUTE	Job Start Feb/06/2011	Customer Encana	Job Number 489686
Date	Time 24-hr clock	Treating Pressure PSI	Flow Rate B/M	Density LB/G	Volume BBL	Message
02/06/2011	03:03:41	13	0.0	8.41	17.5	
02/06/2011	03:06:11	568	0.0	8.41	17.5	
02/06/2011	03:08:41	12	0.0	8.41	17.5	
02/06/2011	03:11:11	161	5.0	8.41	24.9	
02/06/2011	03:13:41	172	5.0	8.40	37.5	
02/06/2011	03:13:47					End Spacer
02/06/2011	03:13:47	174	5.0	8.40	38.0	
02/06/2011	03:13:49					Start Cement Slurry
02/06/2011	03:13:49	170	5.0	8.40	38.2	
02/06/2011	03:13:50					Start Mixing Scav Slurry
02/06/2011	03:13:50	170	5.0	8.40	38.3	
02/06/2011	03:13:52					Reset Total, Vol = 38.46 bbl
02/06/2011	03:13:52	168	5.1	8.43	38.5	
02/06/2011	03:14:25					End Scavenger Slurry
02/06/2011	03:14:25	243	5.1	12.65	41.3	
02/06/2011	03:14:26					Start Mixing Lead Slurry
02/06/2011	03:14:26	246	5.1	12.65	41.4	
02/06/2011	03:14:29					64bbl(170sks) of 12.5ppg Cement
02/06/2011	03:14:29					Mud scale test reads 12.5ppg
02/06/2011	03:14:29	239	5.1	12.65	41.6	
02/06/2011	03:14:30					Good returns
02/06/2011	03:14:30	239	5.1	12.65	41.7	
02/06/2011	03:16:11	208	5.1	12.64	50.3	
02/06/2011	03:18:41	181	5.1	12.61	63.1	
02/06/2011	03:21:11	175	5.1	12.61	75.8	
02/06/2011	03:23:41	23	1.7	12.63	85.5	
02/06/2011	03:26:11	51	2.3	12.07	92.3	
02/06/2011	03:27:00					End Lead Slurry
02/06/2011	03:27:00	108	3.5	12.31	94.7	
02/06/2011	03:27:01					Start Mixing Scav Slurry
02/06/2011	03:27:01	102	3.5	12.31	94.8	
02/06/2011	03:27:58					Reset Total, Vol = 61.01 bbl
02/06/2011	03:27:58	190	5.1	13.19	99.5	
02/06/2011	03:28:41	184	5.1	13.38	103.1	
02/06/2011	03:31:11	119	3.6	13.79	113.5	
02/06/2011	03:31:38					End Scavenger Slurry
02/06/2011	03:31:38	119	3.6	13.88	115.1	
02/06/2011	03:31:39					Start Mixing Tail Slurry
02/06/2011	03:31:39	119	3.6	13.91	115.1	
02/06/2011	03:31:41					38bbl(139sks) of 14.0ppg Cement
02/06/2011	03:31:41					Mud scale test reads 14.0ppg
02/06/2011	03:31:41	116	3.6	13.94	115.3	
02/06/2011	03:31:42					Good returns
02/06/2011	03:31:42	116	3.6	13.99	115.3	
02/06/2011	03:33:41	135	3.6	13.97	122.5	
02/06/2011	03:36:11	107	3.6	14.18	131.5	
02/06/2011	03:38:41	121	3.7	14.21	140.6	
02/06/2011	03:38:44					End Tail Slurry
02/06/2011	03:38:44	37	3.6	14.16	140.8	
02/06/2011	03:42:31					101bbl fresh water displacement
02/06/2011	03:42:31	-3	0.0	14.12	141.1	
02/06/2011	03:42:32					Good returns
02/06/2011	03:42:32	-3	0.0	14.12	141.1	
02/06/2011	03:43:41	143	5.1	8.79	143.1	

Well			Field		Job Start		Customer		Job Number	
MFO6B-16 H17 696 MFO6B-16 H17 696			N. PARACHUTE		Feb/06/2011		Encana		489686	
Date	Time 24-hr clock	Treating Pressure PSI		Flow Rate B/M	Density LB/G		Volume BBL	Message		
02/06/2011	03:48:41	177		6.6	8.49		172.3			
02/06/2011	03:51:11	246		6.6	8.37		188.8			
02/06/2011	03:53:41	316		6.5	8.41		205.2			
02/06/2011	03:56:11	419		6.4	8.41		221.4			
02/06/2011	03:58:41	342		3.5	8.41		233.0			
02/06/2011	04:01:11	341		2.0	8.40		240.3			
02/06/2011	04:03:41	1393		0.1	8.40		245.1			
02/06/2011	04:03:57							Cement to surface at 88bbl away		
02/06/2011	04:03:57							13bbl cement to surface		
02/06/2011	04:03:57	1387		0.0	8.40		245.1			
02/06/2011	04:04:18							Bump Top Plug		
02/06/2011	04:04:18	1382		0.0	8.41		245.1			
02/06/2011	04:04:19							End Displacement		
02/06/2011	04:04:19	1382		0.0	8.41		245.1			
02/06/2011	04:04:54							held pressure for 10min		
02/06/2011	04:04:54							Blead off pressure floats held		
02/06/2011	04:04:54							.5bbl back		
02/06/2011	04:04:54	1379		0.0	8.41		245.1			
02/06/2011	04:06:11	1375		0.0	8.41		245.1			
02/06/2011	04:08:41	1368		0.0	8.41		245.1			
02/06/2011	04:11:11	-12		0.0	8.41		245.1			
02/06/2011	04:12:18							End Cement Slurry		
02/06/2011	04:12:18	-15		0.0	8.41		245.1			
02/06/2011	04:12:20							End Job		
02/06/2011	04:12:20	-15		0.0	8.42		245.1			

Post Job Summary

Average Pump Rates, bbl/min					Volume of Fluid Injected, bbl								
Slurry 5.0	N2	Mud 0.0	Maximum Rate 6.9		Total Slurry 102.0	Mud 0.0	Spacer 20.0	N2					
Treating Pressure Summary, psi					Breakdown Fluid								
Maximum 3000	Final 400	Average 105	Bump Plug to 1378	Breakdown	Type FreshWater		Volume 273.0 bbl		Density 8.34 lb/gal				
Avg. N2 Percent		Designed Slurry Volume 102.0 bbl		Displacement 100.7 bbl		Mix Water Temp 85 degF		Cement Circulated to Surface?		<input checked="" type="checkbox"/>	Volume 13.0 bbl		
								Washed Thru Perfs		<input type="checkbox"/>	To		
Customer or Authorized Representative Cody Huseby				Schlumberger Supervisor Dustin Cyrus Krueger				Circulation Lost		<input type="checkbox"/>	Job Completed		<input checked="" type="checkbox"/>
								-			-		