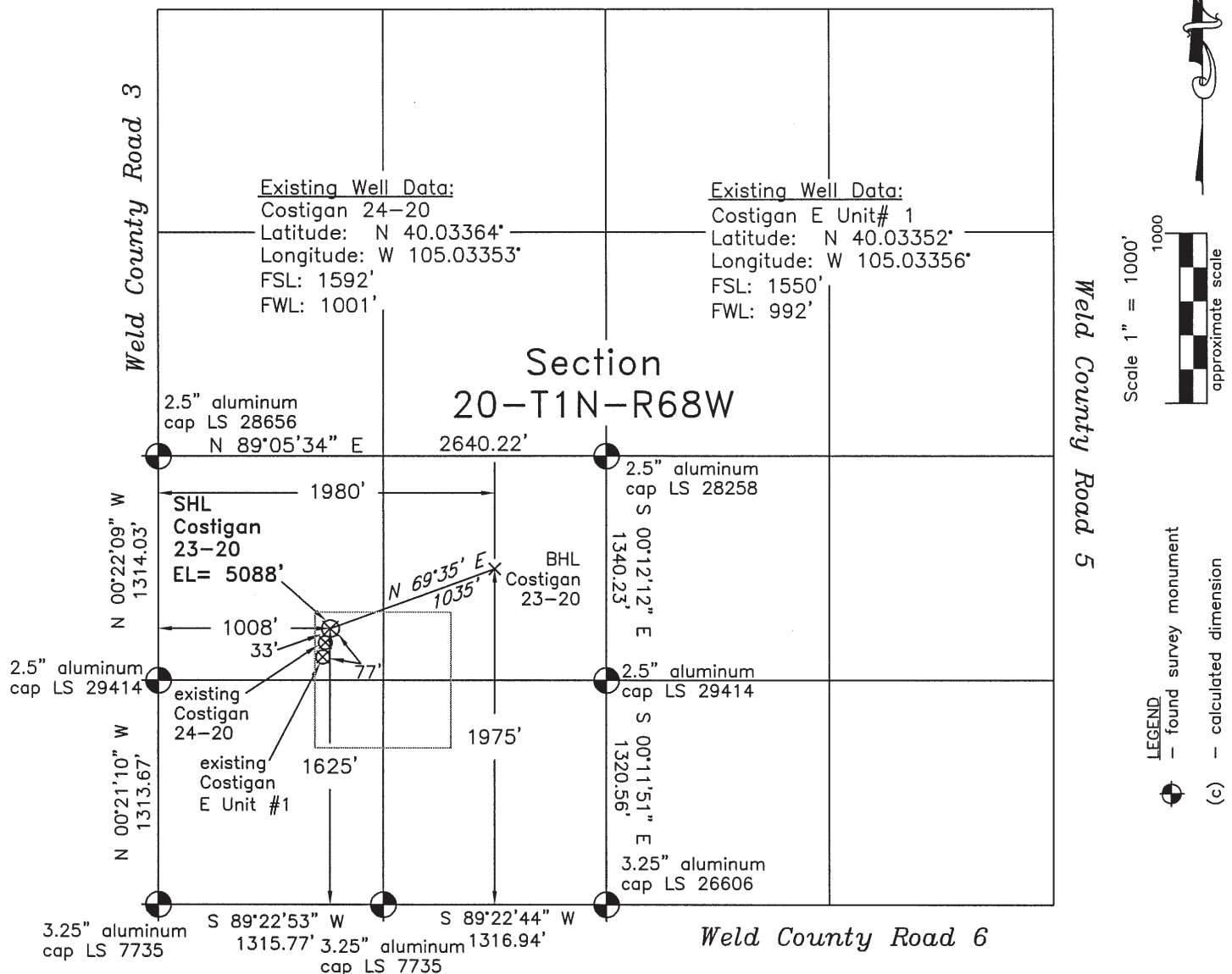


WELL LOCATION CERTIFICATE

THIS MAP DOES NOT REPRESENT A BOUNDARY SURVEY

Weld County Road 8



In accordance with a request from Doug Pearlman of EnCana Oil & Gas (USA) Inc., Frederick Land Surveying, Inc. has determined the location of the **Costigan 23-20** well site to be SHL: 1625' FSL and 1008' FWL, (BHL 1975' FSL and 1980' FWL), as measured at ninety (90) degrees from the section lines of Section 20, Township 1 North, Range 68 West of the 6th Principal Meridian, Weld County Colorado.

Proposed Surface Hole Data:

Latitude: N 40.03372° BHL(40.03470°)

Longitude: W 105.03350° BHL(105.03003°)

Nearest: Building 601' northwest

Above Ground Utility 762' northeast

Public Road 1359' northwest

Railroad 4890' northwest

Property Line 310' south

PDOP: 1.0

Notes:

- 1) Bearings and distances based on NAD 83 Colorado North State Plane Coordinates using RTK GPS observations taken 2/01/10 by operator Craig Burke.
- 2) Conversion factor to ground (1.00027939717).
- 3) Elevations based on NAVD 88 GPS heights and Geoid 2003 corrections.
- 4) See improvement map for visible improvements within 400 feet.
- 5) The location falls on agricultural land.

NOTICE: According to Colorado law you must commence any legal action based upon any defect in this W.L.C. within three years after you first discover such defect. In no event may any action based upon any defect in this W.L.C. be commenced more than ten years from this said date of the certification shown hereon.

I hereby certify that this Well Location Certificate was prepared by me or under my direct supervision on 2/2/10 for and on behalf of EnCana Oil & Gas (USA) Inc. and that it is not a Land Survey plat and that it is not to be relied upon for establishment of fences, buildings, or other future improvement lines.

Alex Rondal
 Alex Rondal, Registered Professional Surveyor #34176
 Job #: 05038.011 2-3-2010