

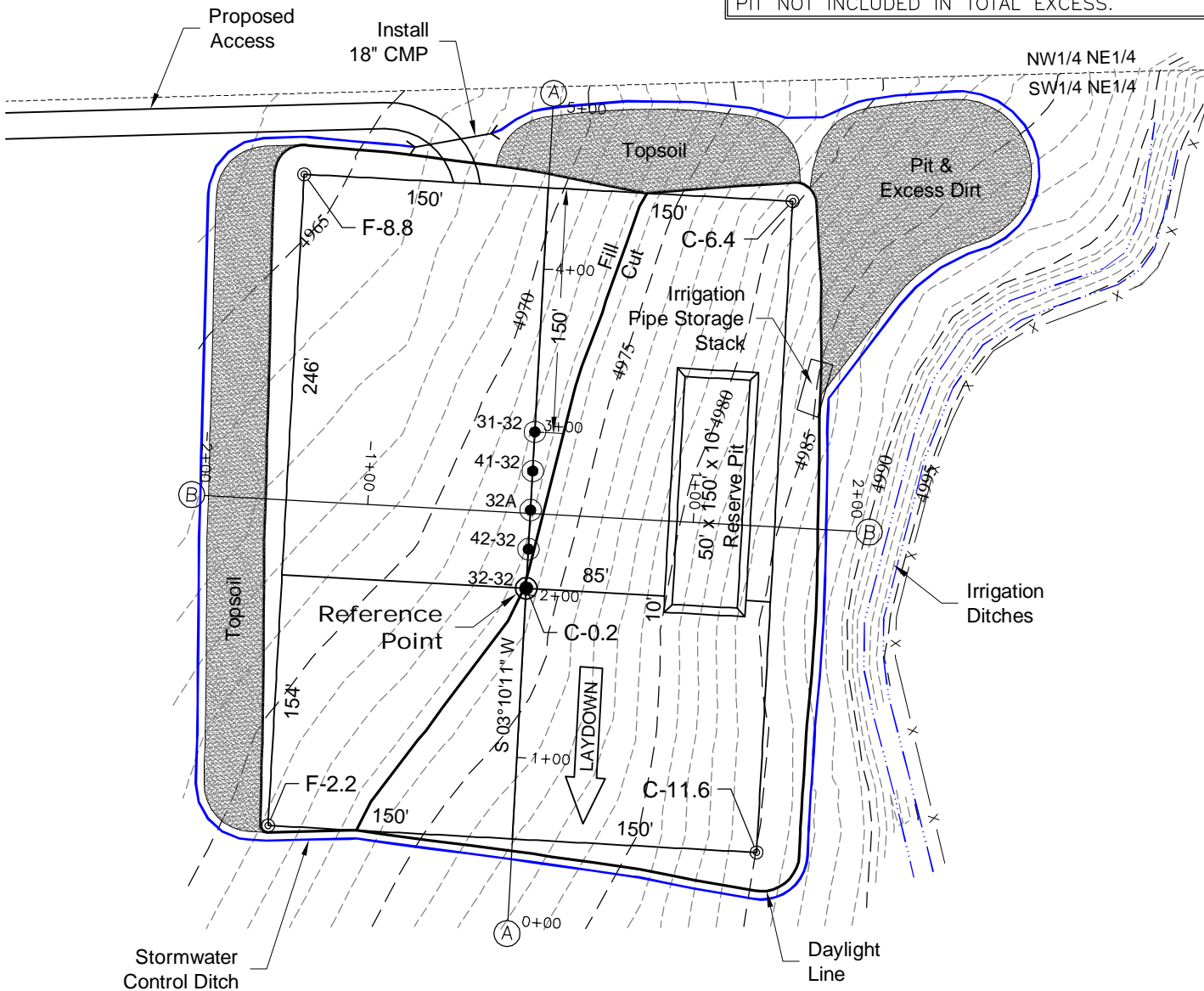
CONSTRUCTION LAYOUT DRAWING

1 of 2

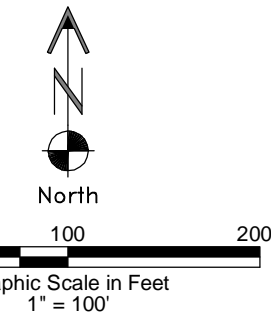
VEGETATION:
PASTURE

SURFACE USE:
GRAZING

PAD 300'X400' ELEV= 4973.4'				
DISTURBED AREA= 4.5± ACRES				
ESTIMATED DIRT QUANTITIES				
CUTx10%	FILL	PIT	TOPSOIL	EXCESS
14,870	9,380	2,660	5,230	260
NOTE: VOLUMES IN CUBIC YARDS. TOPSOIL INCLUDED IN VOLUMES AT A DEPTH OF 12". PIT NOT INCLUDED IN TOTAL EXCESS.				



DWG: G:\GEO\SURV\WellzNorth\Sovereign Energy 112004\Bromley 32-32\F2A.dwg USER: MTC DATE: Feb. 17, 2012 10:08am



2/17/12

NOTE:
10% ALLOWANCE IS MADE FOR SOIL EXPANSION.

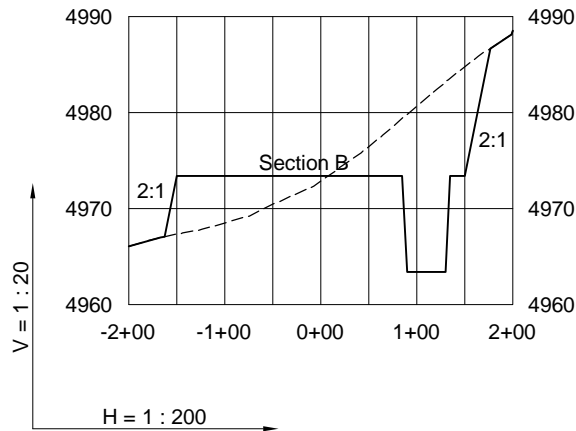
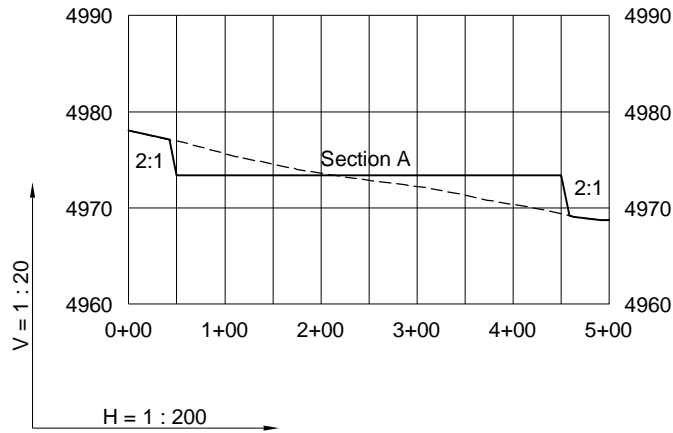
GEO SURV
LAND SURVEYING AND MAPPING
LAFAYETTE - WINTER PARK
Ph 303 666 0379 Fx 303 665 6320

SOVEREIGN OPERATING CO., LLC
BROMLEY 32-32 PAD

SW1/4 NE1/4 SECTION 32 T4N R68W
6th PM WELD COUNTY COLORADO

CONSTRUCTION LAYOUT DRAWING

2 of 2



2/17/12

----- Existing Ground
 _____ Proposed Grade

GEO SURV

LAND SURVEYING AND MAPPING
 LAFAYETTE - WINTER PARK
 Ph 303 666 0379 Fx 303 665 6320

SOVEREIGN OPERATING CO., LLC
 BROMLEY 32-32 PAD

SW1/4 NE1/4 SECTION 32 T4N R68W
 6th PM WELD COUNTY COLORADO