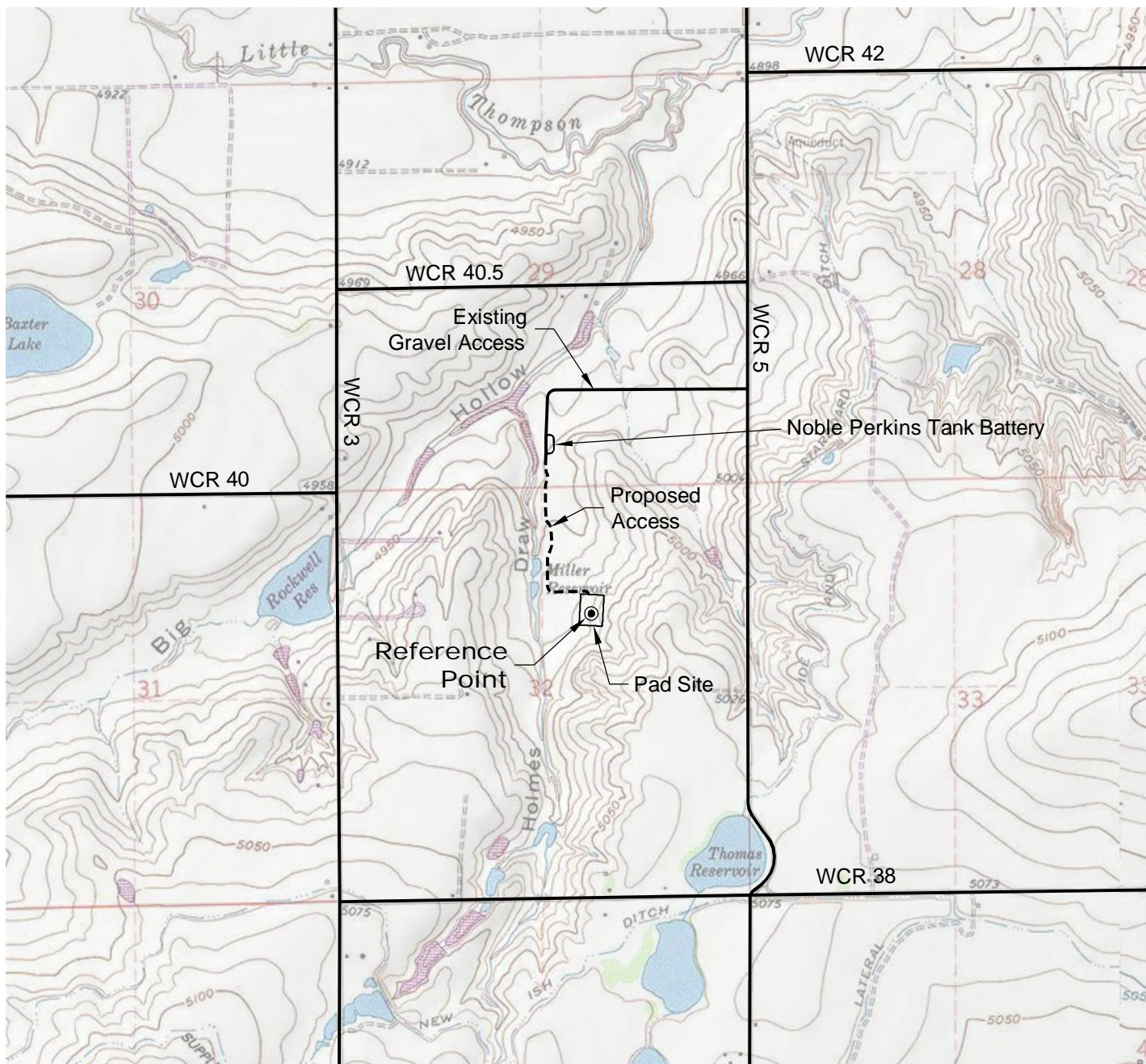


ACCESS ROAD MAP



DRIVING DIRECTIONS:

- MP 0.0 - Exit 245 off I-25; North along east frontage road
- MP 2.1 - Left on WCR 38; West along WCR 38
- MP 4.1 - Right on WCR 5; North along WCR 5
- MP 5.3 - Left onto existing gravel access; west along access
- MP 5.8 - Left continuing south along existing gravel access
- MP 5.9 - Pass by Noble Perkins tank battery; continue south
- MP 6.4 - Bromley 32-32 Pad

2/17/12



Graphic Scale in Feet
1" = 2000'



LAND SURVEYING AND MAPPING
LAFAYETTE - WINTER PARK
Ph 303 666 0379 Fx 303 665 6320

SOVEREIGN OPERATING CO., LLC
BROMLEY 32-32 PAD

SW1/4 NE1/4 SECTION 32 T4N R68W
6th PM WELD COUNTY COLORADO