

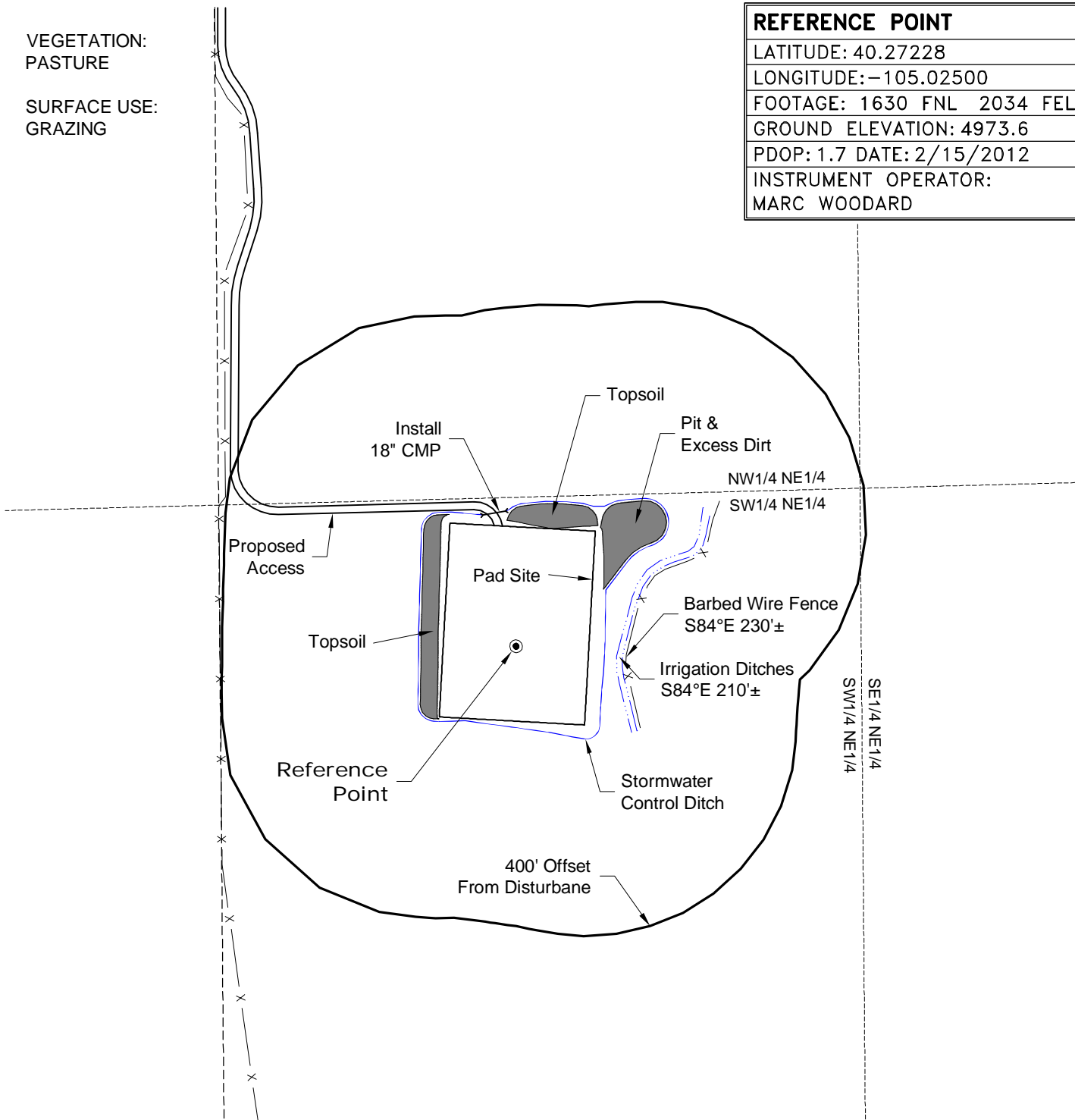
LOCATION DRAWING

VEGETATION:
PASTURE

SURFACE USE:
GRAZING

REFERENCE POINT

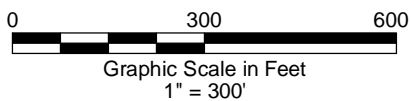
LATITUDE: 40.27228
LONGITUDE: -105.02500
FOOTAGE: 1630 FNL 2034 FEL
GROUND ELEVATION: 4973.6
PDOP: 1.7 DATE: 2/15/2012
INSTRUMENT OPERATOR: MARC WOODARD



DWG: G:\GEO SURV\Weitz\North\Sovereign Energy 112004\Bromley 32-32\F2A.dwg USER: MTC DATE: Feb. 17, 2012 10:06am



North



DISTURBANCE ACREAGE:
4.5± DRILLING OPERATIONS
1.0± INTERIM RECLAIM

NOTE:
ALL PRODUCTION FACILITIES WILL BE ON PAD.

2/17/12



LAND SURVEYING AND MAPPING
LAFAYETTE - WINTER PARK
Ph 303 666 0379 Fx 303 665 6320

SOVEREIGN OPERATING CO., LLC
BROMLEY 32-32 PAD

SW1/4 NE1/4 SECTION 32 T4N R68W
6th PM WELD COUNTY COLORADO