

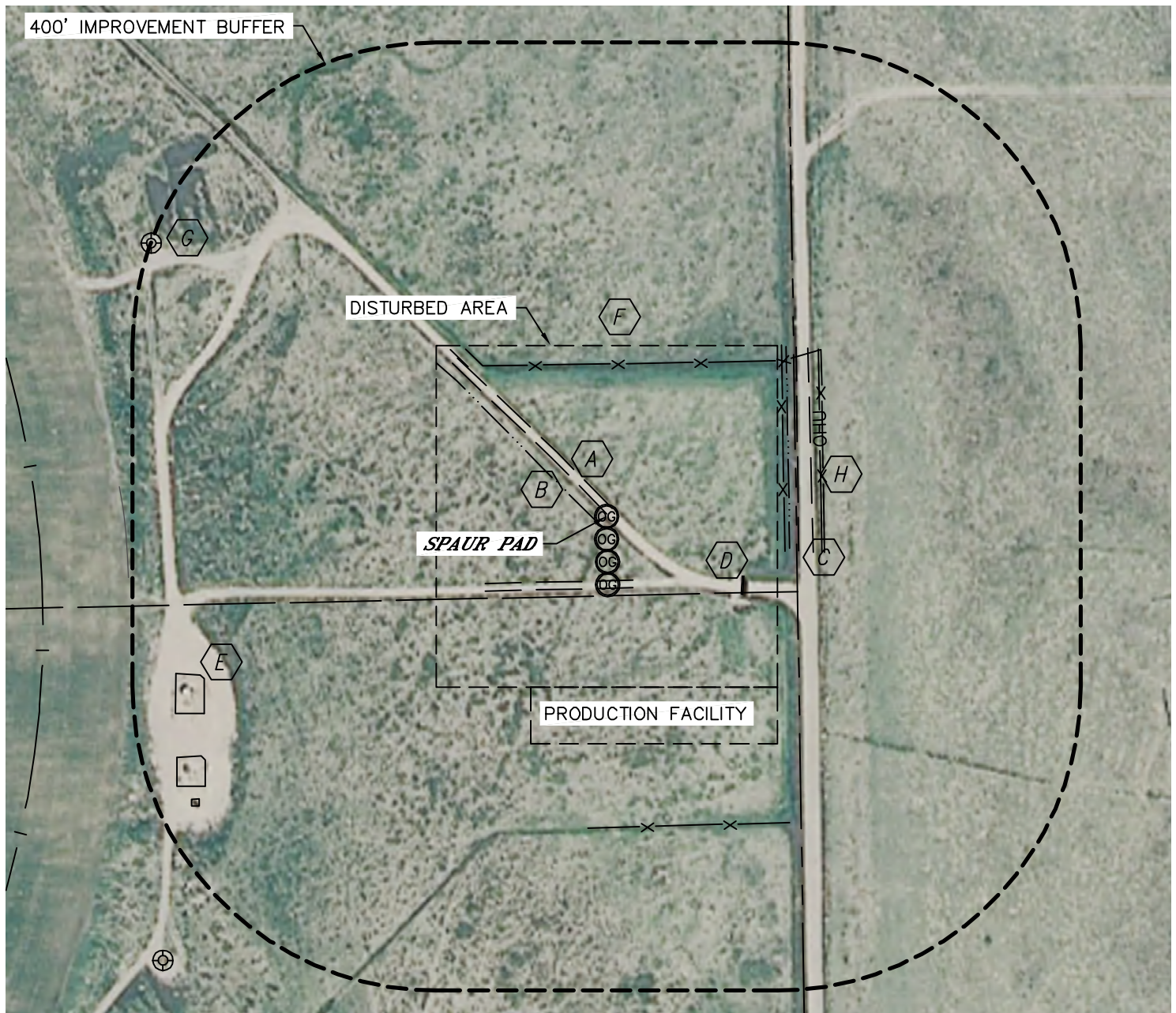


Lat40°, Inc. 1635 Foxtrail Drive, Suite 325 Loveland, CO 970-776-3321

LOCATION DRAWING

SPAUR 31V-214, 204, 404, 31W-214

SECTION: 31
TOWNSHIP: 7N
RANGE: 63W



IMPROVEMENTS:

(MEASURED FROM THE PROPOSED SPAUR 31V-214 WELL LOCATION)

- | | |
|--|---|
| A FIELD ROAD 7' NE, 90' S | F FENCE 201' N, 234' E, 286' E, 410' S |
| B DITCH 15' SW, 269' NW, 241' E | G EX O/G WELL 700' NW (ZAHOUREK 41-31) |
| C PRIVATE ROAD (CR 63) 253' E | H OVERHEAD UTILITY 283' E |
| D CATTLE GUARD 196' SE | |
| E EX. PRODUCTION EQUIPMENT (PDC)
572' SW, 619' SW, 654' SW | |

NEAREST: BUILDING 924' N, PUBLIC ROAD (CR 63) 253' E,
ABOVE GROUND UTILITY 283' E, RAILROAD 5280'+, PROPERTY LINE 201' N

DATE: REV.2/17/2012
PROJECT#: 2011208