

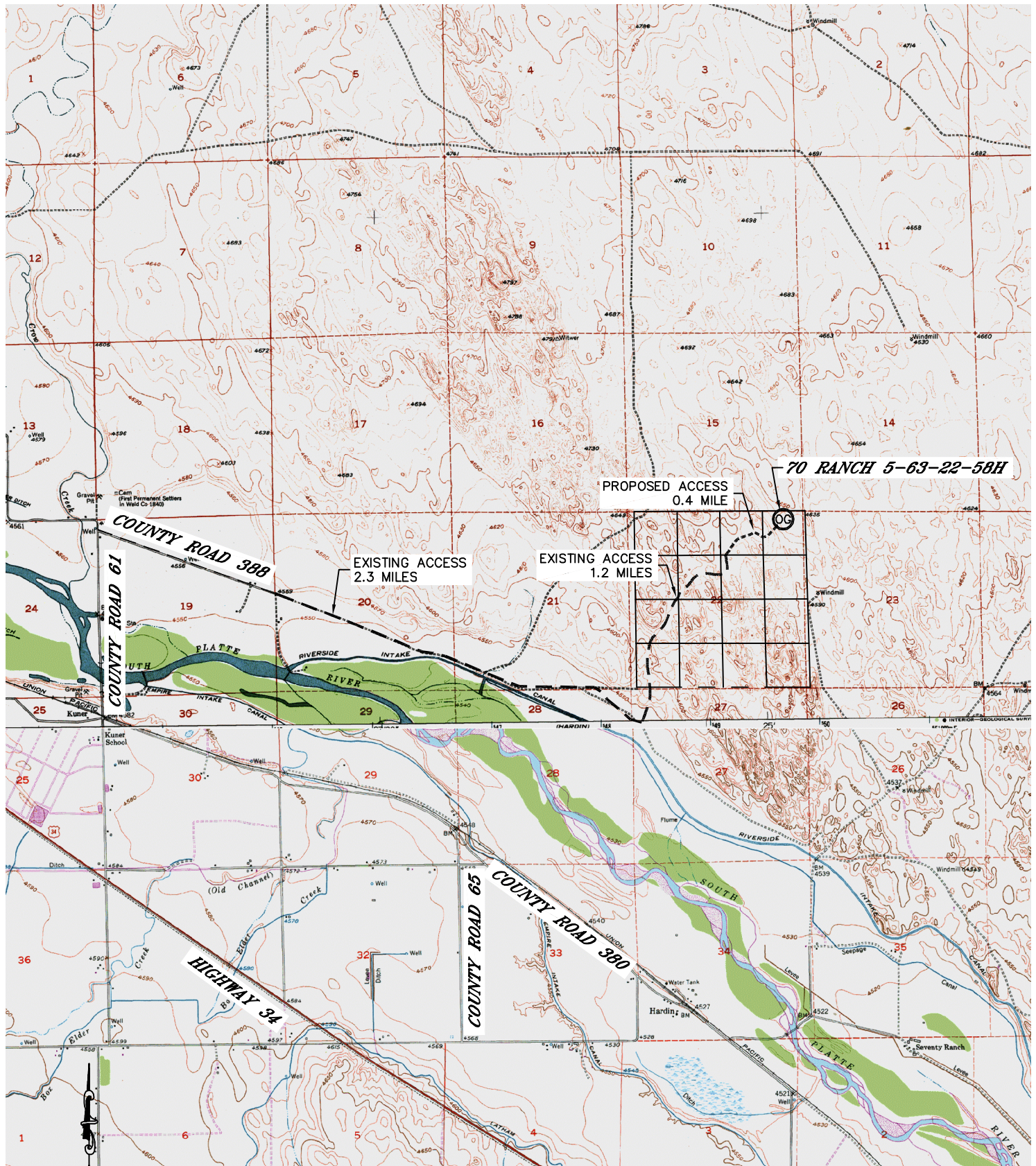


Lat40°, Inc. 1635 Foxtrail Drive, Suite 325 Loveland, CO 970-776-3321

ACCESS ROAD MAP

70 RANCH 5-63-22-58H

SECTION: 22
TOWNSHIP: 5N
RANGE: 63W



DIRECTIONS:
FROM THE INTERSECTION OF COUNTY ROAD 61 AND CR 388 DRIVE SOUTHEAST (1.1 MILES) TO THE ENTRANCE OF 70 RANCH (YELLOW GATE). CONTINUE SOUTHEAST (2.3 MILES), THEN TURN NORTHEASTERLY (1.2 MILES), TO A NEW ACCESS ROAD, THEN TURN NORTHEASTERLY (0.4 MILE) TO WELL SITE.

DATE: 2/27/12
PROJECT#: 2010044



Lat40°, Inc. 1635 Foxtrail Drive, Suite 325 Loveland, CO 970-776-3321

ACCESS ROAD MAP

70 RANCH 5-63-22-58H

SECTION: 22
TOWNSHIP: 5N
RANGE: 63W

