

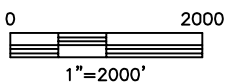
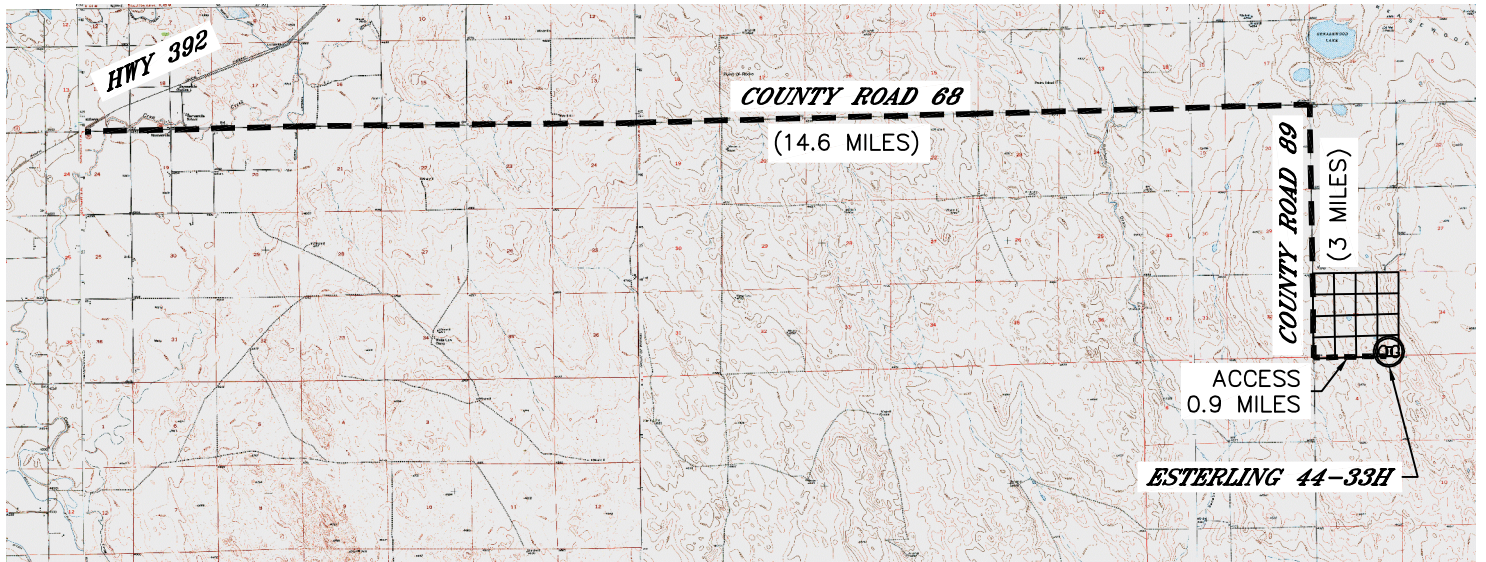


Lat40°, Inc. 1635 Foxtrail Drive, Suite 325 Loveland, CO 970-776-3321

# ACCESS ROAD MAP-A

ESTERLING 44-33H

SECTION: 33  
TOWNSHIP: 6N  
RANGE: 61W



**DIRECTIONS:**  
 FROM THE INTERSECTION OF HIGHWAY 392 AND COUNTY ROAD 68 GO EAST 14.6 MILES  
 TO COUNTY ROAD 89, THEN GO SOUTH 3 MILES TO A  
 PROPOSED ACCESS ROAD THEN EAST 0.9 MILES TO THE LOCATION.

DATE: 3/6/12  
 PROJECT#: 2012008

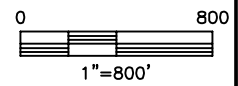
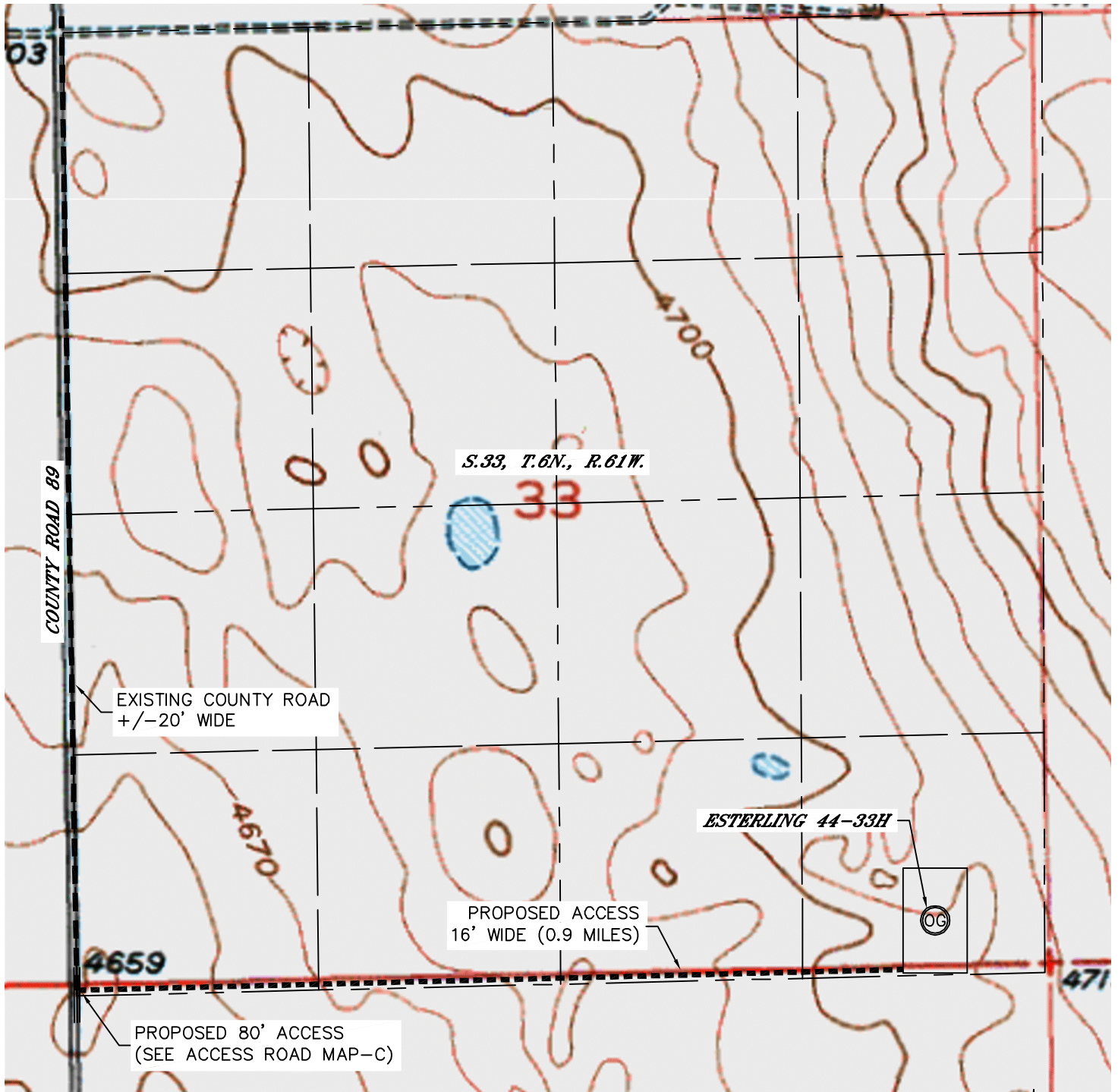


Lat40°, Inc. 1635 Foxtrail Drive, Suite 325 Loveland, CO 970-776-3321

# ACCESS ROAD MAP-B

ESTERLING 44-33H

SECTION: 33  
TOWNSHIP: 6N  
RANGE: 61W



DATE: 3/6/12  
PROJECT#: 2012008