

HALLIBURTON

WILLIAMS PRODUCTION RMT INC - EBUS

GM 513-27
GRAND VALLEY
Garfield County , Colorado

Cement Surface Casing

30-Apr-2011

Post Job Summary

The Road to Excellence Starts with Safety

Sold To #: 300721		Ship To #: 2850326		Quote #:		Sales Order #: 8124621	
Customer: WILLIAMS PRODUCTION RMT INC - EBUS				Customer Rep: Geary, Scott			
Well Name: GM			Well #: 513-27		API/UWI #: 05-045-19737		
Field: GRAND VALLEY		City (SAP): PARACHUTE		County/Parish: Garfield		State: Colorado	
Lat: N 39.491 deg. OR N 39 deg. 29 min. 27.812 secs.				Long: W 108.095 deg. OR W -109 deg. 54 min. 17.201 secs.			
Contractor: H&P Drilling			Rig/Platform Name/Num: H&P 278				
Job Purpose: Cement Surface Casing							
Well Type: Development Well				Job Type: Cement Surface Casing			
Sales Person: SCOTT, KYLE			Srvc Supervisor: MAGERS, MICHAEL		MBU ID Emp #: 339439		
Job Personnel							
HES Emp Name		Exp Hrs	Emp #	HES Emp Name		Exp Hrs	Emp #
BORSZICH, STEPHEN A		8	412388	KEANE, JOHN Donovan		8	486519
YUTZY, BRIAN Matthew		8	478510				
MAGERS, MICHAEL Gerard		8	339439				
Equipment							
HES Unit #	Distance-1 way	HES Unit #	Distance-1 way	HES Unit #	Distance-1 way	HES Unit #	Distance-1 way
10011429	60 mile	10713212	60 mile	10872429	60 mile	10897849	60 mile
11259886	60 mile	11360883	60 mile				
Job Hours							
Date	On Location Hours	Operating Hours	Date	On Location Hours	Operating Hours	Date	On Location Hours
04/29/2011	2.5	0	04/30/2011	5.5	1.5		
TOTAL				<i>Total is the sum of each column separately</i>			
Job				Job Times			
Formation Name				Date		Time	
Formation Depth (MD) Top		Bottom		Called Out		Time Zone	
				29 - Apr - 2011		17:00 MST	
Form Type		BHST		On Location		29-Apr-2011 21:30 MST	
Job depth MD 2192. ft		Job Depth TVD 2192. ft		Job Started		30 - Apr - 2011 02:49 MST	
Water Depth		Wk Ht Above Floor 3. ft		Job Completed		30 - Apr - 2011 04:02 MST	
Perforation Depth (MD) From		To		Departed Loc		30 - Apr - 2011 05:00 MST	
Well Data							
Description	New / Used	Max pressure psig	Size in	ID in	Weight lbm/ft	Thread	Grade
13 1/2" Open Hole				13.5			
9 5/8" Surface Casing	New		9.625	9.001	32.3		H-40
Sales/Rental/3rd Party (HES)							
Description				Qty	Qty uom	Depth	Supplier
PLUG,CMTG, TOP, 9 5/8, HWE, 8.16 MIN/9.06 MA				1	EA		
Tools and Accessories							
Type	Size	Qty	Make	Depth	Type	Size	Qty
Guide Shoe					Packer		
Float Shoe					Bridge Plug		
Float Collar					Retainer		
Insert Float							
Stage Tool							
Miscellaneous Materials							
Gelling Agt		Conc		Surfactant		Conc	Acid Type
Treatment Fld		Conc		Inhibitor		Conc	Sand Type
							Qty
							Conc %
							Size
							Qty

Fluid Data									
Stage/Plug #: 1									
Fluid #	Stage Type	Fluid Name	Qty	Qty uom	Mixing Density lbm/gal	Yield ft ³ /sk	Mix Fluid Gal/sk	Rate bbl/min	Total Mix Fluid Gal/sk
1	Water Spacer		20	bbl	8.4	.0	.0	.0	
2	VersaCem Lead	VERSACEM (TM) SYSTEM (452010)	330	sacks	12.3	2.38	13.75		13.75
	13.75 Gal	FRESH WATER							
3	VersaCem Tail	VERSACEM (TM) SYSTEM (452010)	160	sacks	12.8	2.11	11.75		11.75
	11.75 Gal	FRESH WATER							
4	Displacement Fluid		167.8	bbl	8.34	.0	.0	.0	
Calculated Values		Pressures		Volumes					
Displacement	167.8	Shut In: Instant		Lost Returns	0	Cement Slurry	200	Pad	
Top Of Cement	SURFACE	5 Min		Cement Returns	35	Actual Displacement	167.8	Treatment	
Frac Gradient		15 Min		Spacers	20	Load and Breakdown		Total Job	388
Rates									
Circulating	RIG	Mixing	8	Displacement	10/2	Avg. Job	9		
Cement Left In Pipe	Amount	45.2 ft	Reason	Shoe Joint					
Frac Ring # 1 @	ID	Frac ring # 2 @	ID	Frac Ring # 3 @	ID	Frac Ring # 4 @	ID		
The Information Stated Herein Is Correct				Customer Representative Signature					

The Road to Excellence Starts with Safety

Sold To #: 300721	Ship To #: 2850326	Quote #:	Sales Order #: 8124621
Customer: WILLIAMS PRODUCTION RMT INC - EBUS		Customer Rep: Geary, Scott	
Well Name: GM	Well #: 513-27	API/UWI #: 05-045-19737	
Field: GRAND VALLEY	City (SAP): PARACHUTE	County/Parish: Garfield	State: Colorado
Legal Description:			
Lat: N 39.491 deg. OR N 39 deg. 29 min. 27.812 secs.		Long: W 108.095 deg. OR W -109 deg. 54 min. 17.201 secs.	
Contractor: H&P Drilling		Rig/Platform Name/Num: H&P 278	
Job Purpose: Cement Surface Casing			Ticket Amount:
Well Type: Development Well		Job Type: Cement Surface Casing	
Sales Person: SCOTT, KYLE		Srvc Supervisor: MAGERS, MICHAEL	MBU ID Emp #: 339439

Activity Description	Date/Time	Cht #	Rate bbl/min	Volume bbl		Pressure psig		Comments
				Stage	Total	Tubing	Casing	
Crew Leave Yard	04/29/2011 19:30							HES ALL PRESENT
Arrive At Loc	04/29/2011 21:30							RIG WAS PULLING DREILL PIPE WHEN HES ARRIVED/RIG CIRCULATED FOR 1 HR WHILE CASERS RIGGED DOWN AND HES RIGGED UP AND PRIMED PUMPS
Assessment Of Location Safety Meeting	04/29/2011 21:40							GOOD CONDITION/SNOWING
Pre-Rig Up Safety Meeting	04/29/2011 21:50							JSA ON RIGGING UP
Rig-Up Equipment	04/29/2011 22:00							TD- 2192 TP-2177 SJ-45.21 MW-10.1 CSG-9.625 32.3# H-40 OH-13.5"
Safety Huddle	04/30/2011 02:30							RIG CREW AND HES ALL PRESENT
Start Job	04/30/2011 02:49							
Other	04/30/2011 02:50		2	2			53.0	FILL LINES
Pressure Test	04/30/2011 02:51		0.5	0.5			5012.0	PSI TEST OK
Pump Spacer 1	04/30/2011 02:56		3	20			110.0	FRESH WATER
Pump Lead Cement	04/30/2011 03:01		8	139.8			453.0	VERSACEM 330 SKS 12.3 PPG 2.38 FT3/SK 13.75 GAL/SK
Pump Tail Cement	04/30/2011 03:21		8	60.1			438.0	VERSACEM 160 SKS 12.8 PPG 2.11 FT3/SK 11.75 GAL/SK
Shutdown	04/30/2011 03:28							

Sold To #: 300721

Ship To #: 2850326

Quote #:

Sales Order #:

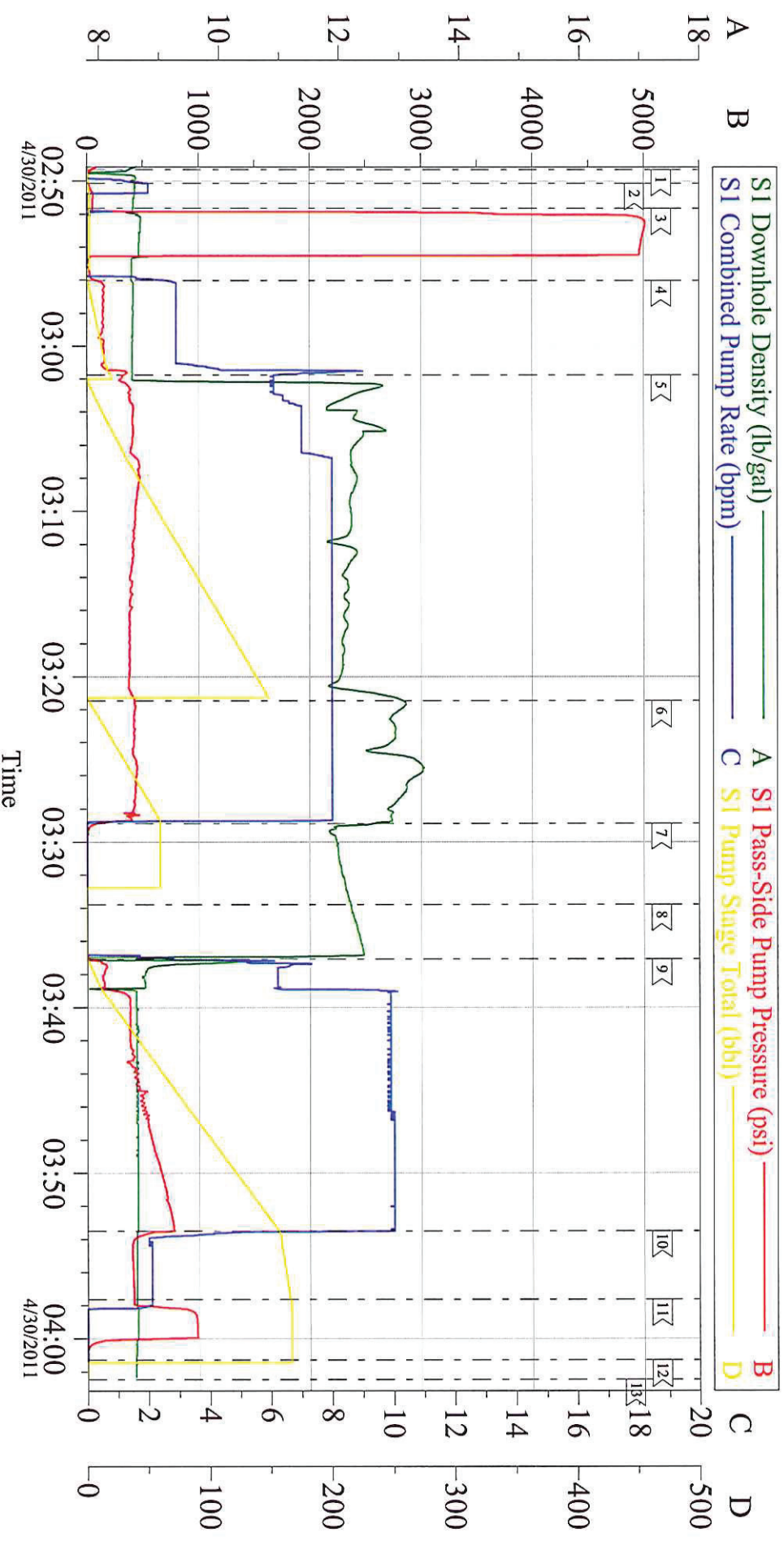
8124621

SUMMIT Version: 7.20.130

Saturday, April 30, 2011 04:35:00

Activity Description	Date/Time	Cht #	Rate bbl/min	Volume bbl		Pressure psig		Comments
				Stage	Total	Tubing	Casing	
Drop Plug	04/30/2011 03:33							PLUG AWAY NO PROBLEMS
Pump Displacement	04/30/2011 03:37		10	167.8			766.0	FRESH WATER
Slow Rate	04/30/2011 03:53		2	157			437.0	GOT 35 BBLS OF CEMENT TO SURFACE
Bump Plug	04/30/2011 03:57		2	167.8			460.0	BUMPED PLUG
Check Floats	04/30/2011 04:01			167.8			982.0	FLOATS HELD/GOT 1/4 BBL BACK INTO DISPLACEMENT TANK
End Job	04/30/2011 04:02							HAD GOOD CIRCULATION THROUGHOUT JOB/THANKS FOR USING HES AND THE CREW OF MIKE MAGERS

WILLIAMS H&P 278 SURFACE



Local Event Log

1 < START JOB	2 < FILL LINES	3 < PRESSURE TEST	02:51:39
4 < PUMP SPACER	5 < PUMP LEAD CEMENT	6 < PUMP TAIL CEMENT	03:21:28
7 < SHUT DOWN	8 < DROP PLUG	9 < PUMP FRS WTR DISPLACEMENT	03:37:05
10 < SLOW RATE	11 < BUMP PLUG	12 < CHECK FLOATS	04:01:18
13 < END JOB	04:02:28		

Customer: WILLIAMS H&P 278 Well Description: GM 513-27 Company Rep: SCOTT GEARY	Job Date: 29-Apr-2011 Job Type: SURFACE Cement Supervisor: MIKE MAGERS
Sales Order #: 8124621 ADC Used: YES Elite #: 7	Brian YUTZY