

SYNERGY RESOURCES CORPORATION
20203 HIGHWAY 60
PLATTEVILLE, Colorado

SRC Pratt
SRC Pratt 29SD

Ensign/33

Post Job Summary

Cement Production Casing

Date Prepared: 5/10/11
Version: 1

Service Supervisor: ROSALES, MATTHEW

Submitted by: FRY, DOMINIK

HALLIBURTON

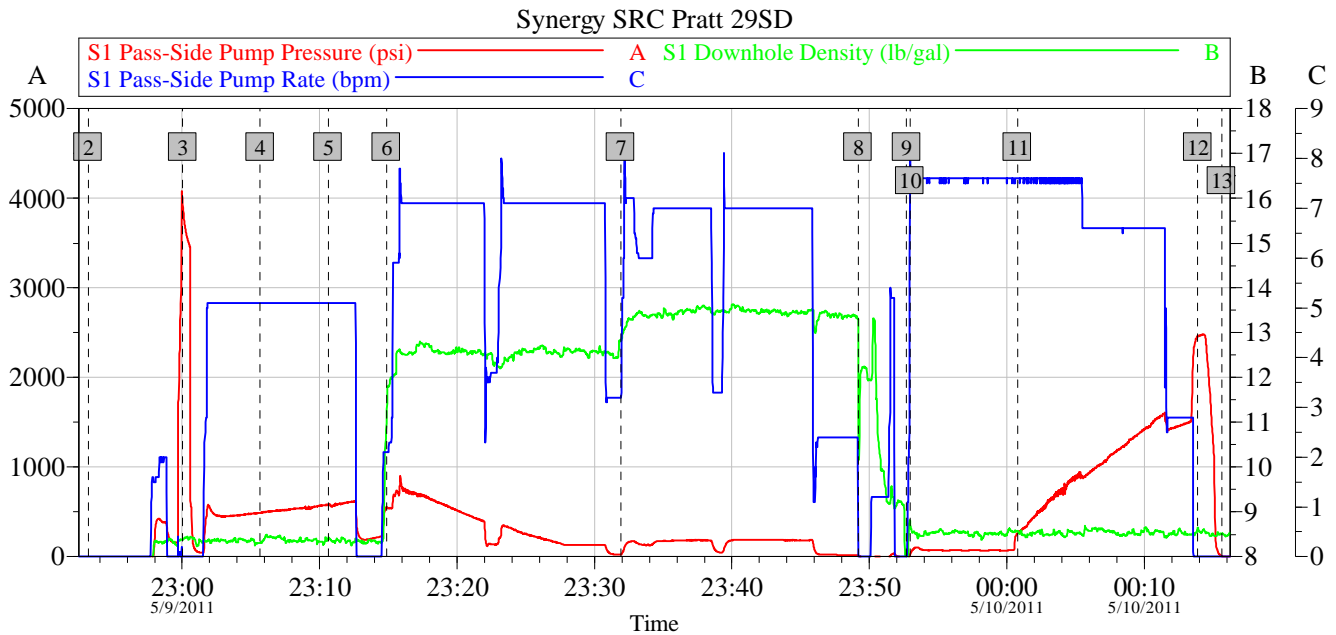
HALLIBURTON

Pumping Schedule

Stage /Plug #	Fluid #	Fluid Type	Fluid Name	Surface Density lbm/gal	Avg Rate bbl/min	Surface Volume	Downhole Volume
1	1	Spacer	Water Spacer	8.33	5.00	20.0 bbl	20.0 bbl
1	2	Spacer	MUD FLUSH III	8.40	5.00	24.0 bbl	24.0 bbl
1	3	Cement Slurry	EcconoCem B2 12.5#	12.50	6.00	340.0 sacks	340.0 sacks
1	4	Cement Slurry	13.5# Fraccem	13.50	5.00	300.0 sacks	300.0 sacks
1	5	Spacer	ClaFix III Water Displacement	8.33	7.00	15.0 Gal	15.0 Gal

HALLIBURTON

Data Acquisition



Global Event Log

2	Start Job	5/9/2011 22:53:11	3	Water Spacer	5/9/2011 23:00:03
4	Mud Flush	5/9/2011 23:05:41	5	Water Spacer	5/9/2011 23:10:39
6	Pump Lead Cement 12.5#/gal	5/9/2011 23:14:51	7	Pump Tail Cement 13.5#/gal	5/9/2011 23:31:55
8	Clean Lines	5/9/2011 23:49:11	9	Drop Top Plug	5/9/2011 23:52:43
10	Pump Displacement	5/9/2011 23:52:58	11	Displ Reached Cmmt	5/10/2011 00:00:48
12	Bump Plug	5/10/2011 00:13:54	13	End Job	5/10/2011 00:15:38

Customer: Synergy

Job Date: 09-May-2011

Sales Order #: 8152658

OptiCem v6.4.10
10-May-11 12:43

HALLIBURTON

Service Supervisor Reports

Job Log

Date/Time	Chart #	Activity Code	Pump Rate	Cum Vol	Pump	Pressure (psig)	Comments
05/09/2011 18:00		Call Out					
05/09/2011 20:25		Pre-Convoy Safety Meeting					JOURNEY MANAGMENT, SAFETY SEND OFF
05/09/2011 20:30		Depart from Service Center or Other Site					
05/09/2011 21:00		Arrive At Loc					RIG IS RUNNING CASING
05/09/2011 21:05		Assessment Of Location Safety Meeting					HAZARD HUNT, JSA, MEET AND GREET
05/09/2011 21:40		Other					SPOT TRUCKS
05/09/2011 21:50		Pre-Rig Up Safety Meeting					PINCH POINTS, HOUSEKEEPING, TEAMWORK, EYES ON TASK, LINE OF FIRE, COMMUNICATION
05/09/2011 22:00		Rig-Up Equipment					
05/09/2011 22:35		Rig-Up Completed					
05/09/2011 22:45		Pre-Job Safety Meeting					PUMP SCHEDULE, LCATION HAZARDS, JOB HAZARDS, LOCATION OF EMERGENCY STATIONS, OFF LIMIT AREAS
05/09/2011 23:00		Start Job					
05/09/2011 23:00		Pump Water	2				FILL LINES
05/09/2011 23:00		Pump Spacer 1	5	20		500.0	WATER SPACER
05/09/2011 23:01		Test Lines	0.5			4000.0	
05/09/2011 23:05		Pump Spacer 2	5	24		535.0	MUD FLUSH
05/09/2011 23:10		Pump Spacer 1	5	10		615.0	WATER SPACER
05/09/2011 23:14		Pump Lead Cement	7	114.4		715.0	340SKS ECCONOCCEM MIXED WITH WATER PROVIDED BY RIG
05/09/2011 23:31		Pump Tail Cement	7	90.8		160.0	300SKS FRACCEM MIXED WITH WATER PROVIDED BY RIG
05/09/2011 23:49		Shutdown					CLEAN LINES
05/09/2011 23:52		Drop Top Plug					
05/09/2011 23:52		Pump Displacement	7	134		1510.0	
05/10/2011 00:13		Bump Plug	2.8			2500.0	
05/10/2011 00:15		Check Floats					FLOATS HELD
05/10/2011 00:15		End Job					
05/10/2011 00:20		Pre-Rig Down Safety Meeting					PINCH POINTS, HOUSEKEEPING, TEAMWORK, EYES ON TASK, LINE OF FIRE, COMMUNICATION
05/10/2011 00:30		Rig-Down Equipment					
05/10/2011 13:20		Rig-Down Completed					
05/10/2011 13:25		Pre-Convoy Safety Meeting					
05/10/2011 13:30		Depart Location for Service Center or Other Site					

HALLIBURTON

The Road to Excellence Starts with Safety

Sold To #: 359915	Ship To #: 2852521	Quote #:	Sales Order #: 8152658
Customer: SYNERGY RESOURCES CORPORATION		Customer Rep:	
Well Name: SRC Pratt		Well #: 29SD	API/UWI #: 05-123-33193
Field: WATTENBERG	City (SAP): ERIE	County/Parish: Weld	State: Colorado
Contractor: Ensign		Rig/Platform Name/Num: 33	
Job Purpose: Cement Production Casing			
Well Type: Development Well		Job Type: Cement Production Casing	
Sales Person: FLING, MATTHEW		Srv Supervisor: ROSALES, MATTHEW	MBU ID Emp #: 392095

Job Personnel

HES Emp Name	Exp Hrs	Emp #	HES Emp Name	Exp Hrs	Emp #	HES Emp Name	Exp Hrs	Emp #
HERNDON, SCOTT E		485448	ROSALES, MATTHEW John		392095	WARD, SAMUEL Winfield		478713
WHITE, SANDY Lynn		490476						

Equipment

HES Unit #	Distance-1 way	HES Unit #	Distance-1 way	HES Unit #	Distance-1 way	HES Unit #	Distance-1 way
10679720C	19 mile	10867419C	19 mile	11341988C	19 mile	11360865C	19 mile
11605598	19 mile						

Job Hours

Date	On Location Hours	Operating Hours	Date	On Location Hours	Operating Hours	Date	On Location Hours	Operating Hours
TOTAL								

Total is the sum of each column separately

Job				Job Times			
Formation Name				Date	Time	Time Zone	
Formation Depth (MD)	Top	Bottom		Called Out	09 - May - 2011	17:00	MST
Form Type		BHST		On Location	09 - May - 2011	21:00	MST
Job depth MD	8750. ft	Job Depth TVD	8750. ft	Job Started	09 - May - 2011	23:00	MST
Water Depth		Wk Ht Above Floor		Job Completed	10 - May - 2011	00:15	MST
Perforation Depth (MD)	From	To		Departed Loc	10 - May - 2011	00:25	MST

Well Data

Description	New / Used	Max pressure psig	Size in	ID in	Weight lbm/ft	Thread	Grade	Top MD ft	Bottom MD ft	Top TVD ft	Bottom TVD ft
Open Hole				7.875				940.	8750.	.	.
Production Casing	New		4.5	4.	11.6			.	8706.		
Surface Casing	Used		8.625	8.097	24.		J-55	.	940.	.	.

Sales/Rental/3rd Party (HES)

Description	Qty	Qty uom	Depth	Supplier
SHOE,FLT,4-1/2 8RD,2-3/4 SSII	1	EA		
CLR,FLT,4-1/2 8RD,9.5-13.5PPF,2-3/4	1	EA		
CENTRALIZER ASSY - API - 4-1/2 CSG X	36	EA		
CLAMP - LIMIT - 4-1/2 - HINGED -	1	EA		
KIT,HALL WELD-A	1	EA		
PLUG ASSY - 3W LATCHDOWN - 4-1/2 IN	1	EA		
Description	Qty	Qty uom	Depth	Supplier
BAFFLE ASSY - 4-1/2 8RD LATCHDOWN PLUG	1	EA		

Tools and Accessories

HALLIBURTON

Type	Size	Qty	Make	Depth	Type	Size	Qty	Make	Depth	Type	Size	Qty	Make
Guide Shoe					Packer					Top Plug			
Float Shoe					Bridge Plug					Bottom Plug			
Float Collar					Retainer					SSR plug set			
Insert Float										Plug Container			
Stage Tool										Centralizers			
Miscellaneous Materials													
Gelling Agt			Conc		Surfactant			Conc		Acid Type		Qty	Conc %
Treatment Fld			Conc		Inhibitor			Conc		Sand Type		Size	Qty
Fluid Data													
Stage/Plug #: 1													
Fluid #	Stage Type	Fluid Name				Qty	Qty uom	Mixing Density lbm/gal	Yield ft3/sk	Mix Fluid Gal/sk	Rate bbl/min	Total Mix Fluid Gal/sk	
1	Water Spacer					20.00	bbl	8.33	.0	.0	5.0		
2	MUD FLUSH III	MUD FLUSH III - SBM (528788)				24.00	bbl	8.4	.0	.0	5.0		
3	EcconoCem B2 12.5#	ECONOCER (TM) SYSTEM (452992)				340.0	sacks	12.5	1.89	10.29	6.0	10.29	
	10.29 Gal	FRESH WATER											
4	13.5# Fracem	FRACCEM (TM) SYSTEM (452963)				300.0	sacks	13.5	1.7	8.16	5.0	8.16	
	8.16 Gal	FRESH WATER											
5	ClaFix III Water Displacement					15.00	Gal	8.33	.0	.0	7.0		
Calculated Values			Pressures			Volumes							
Displacement			Shut In: Instant			Lost Returns		Cement Slurry		Pad			
Top Of Cement			5 Min			Cement Returns		Actual Displacement		Treatment			
Frac Gradient			15 Min			Spacers		Load and Breakdown		Total Job			
Rates													
Circulating			Mixing			Displacement				Avg. Job			
Cement Left In Pipe		Amount	14 ft	Reason		Shoe Joint							
Frac Ring # 1 @		ID		Frac ring # 2 @		ID		Frac Ring # 3 @		ID		Frac Ring # 4 @	ID
The Information Stated Herein Is Correct						Customer Representative Signature							