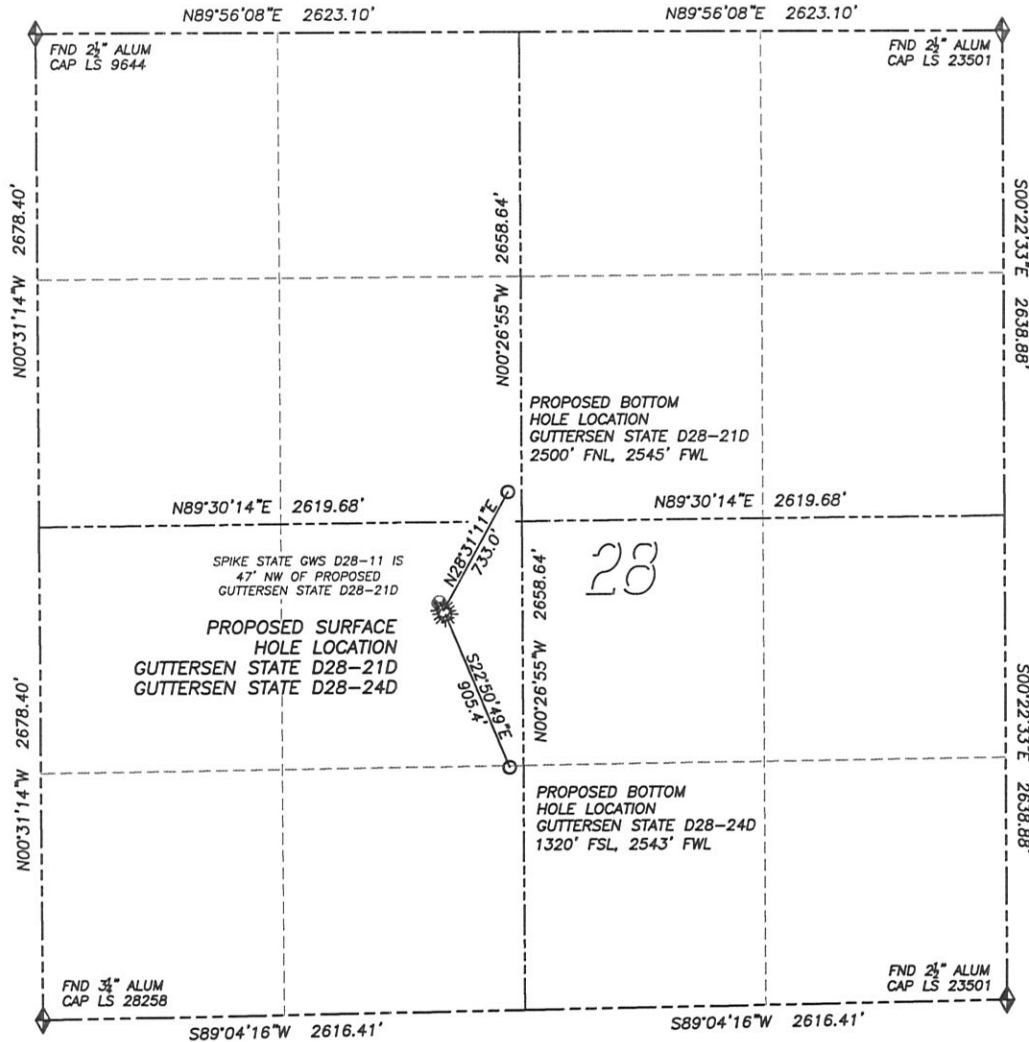


DALEY LAND SURVEYING, INC.

PARKER, CO. 80134

303 953 9841

MULTI-WELL PAD DIRECTIONAL LAYOUT
GUTTERSEN STATE D28-21D & GUTTERSEN STATE D28-24D
 SECTION 28, TOWNSHIP 3 NORTH, RANGE 64 WEST OF THE 6TH PRINCIPAL MERIDIAN



LEGEND

- ◆ FOUND MONUMENT AS DESCRIBED
- ☀ PROPOSED WELL
- ⊙ EXISTING WELL
- BOTTOM HOLE
- ⊘ ABANDONED WELL

NAD 83 LATITUDE AND LONGITUDE

GUTTERSEN STATE D28-21D

SURFACE HOLE:

LATITUDE: N40.19507°
 LONGITUDE: W104.55790°
 ELEVATION: 4800'
 FOOTAGE: 2180' FSL, 2189' FWL
 PDOP: 2.7
 QTR/QTR: NE4/SW4
 PROP LINE: 2180'± SOUTH
BOTTOM HOLE:
 LATITUDE: N40.19682°
 LONGITUDE: W104.55663°
 FOOTAGE: 2500' FNL, 2545' FWL

NEAREST EXISTING WELL:

SPIKE STATE GWS D28-11
 LATITUDE: N40.19518°
 LONGITUDE: W104.55798°
 ELEVATION: 4801'
 47' NORTHWEST

NAD 83 LATITUDE AND LONGITUDE

GUTTERSEN STATE D28-24D

SURFACE HOLE:

LATITUDE: N40.19501°
 LONGITUDE: W104.55787°
 ELEVATION: 4799'
 FOOTAGE: 2160' FSL, 2199' FWL
 PDOP: 2.8
 QTR/QTR: NE4/SW4
 PROP LINE: 2160'± SOUTH
BOTTOM HOLE:
 LATITUDE: N40.19271°
 LONGITUDE: W104.55664°
 FOOTAGE: 1320' FSL, 2543' FWL

NEAREST EXISTING WELL:

SPIKE STATE GWS D28-11
 LATITUDE: N40.19518°
 LONGITUDE: W104.55798°
 ELEVATION: 4801'
 70' NORTHWEST

DALEY LAND SURVEYING, INC.

PARKER, CO. 80134

303 953 9841

MULTI-WELL PAD LOCATION DRAWING
GUTTERSEN STATE D28-21D & GUTTERSEN STATE D28-24D
SECTION 28, TOWNSHIP 3 NORTH, RANGE 64 WEST OF THE 6TH PRINCIPAL MERIDIAN

