

Mineral Resources Inc

Well Name: **BESTWAY 6-11**

Surface Location: BESTWAY HOR PAD 2-5N-66W
North American Datum 1983 , US State Plane 1983 , Colorado Northern Zone

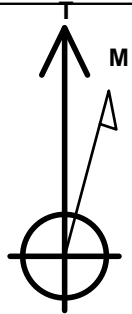
Ground Elevation: 4701.0

+N/-S	+E/-W	Northing	Easting	Latitude	Longitude	Slot
0.0	0.0	1400656.38	3211772.61	40.430710	-104.739270	

KB RIG 14 RKB @ 4716.0ft (KB RIG 14)

WELLBORE TARGET DETAILS

Name	TVD	+N/-S	+E/-W	Shape
HALF SECTION BHL HARDLINE 2432'FNL	1.0	-5428.3	-725.8	Polygon
BHL 2432'FNL & 1476'FEL	6850.0	-5428.3	-325.8	Point
T1 6-11	6850.0	-827.0	-264.5	Point



Azimuths to True North
Magnetic North: 8.77°

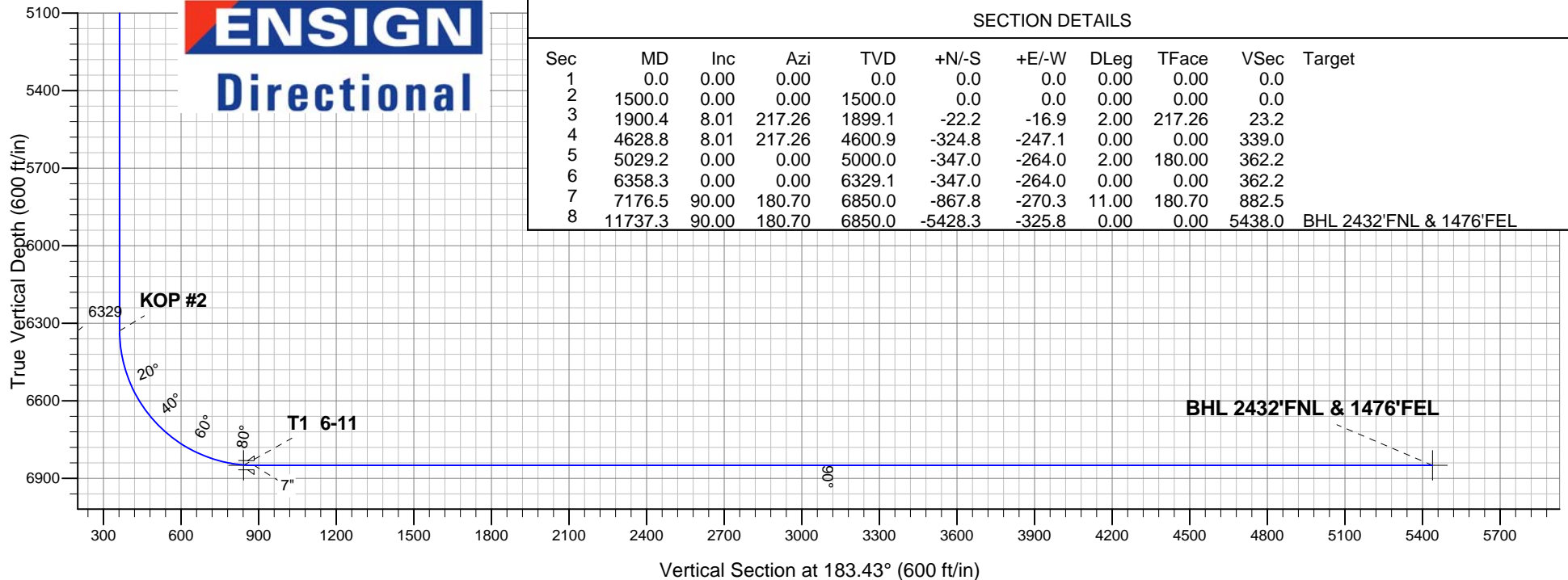
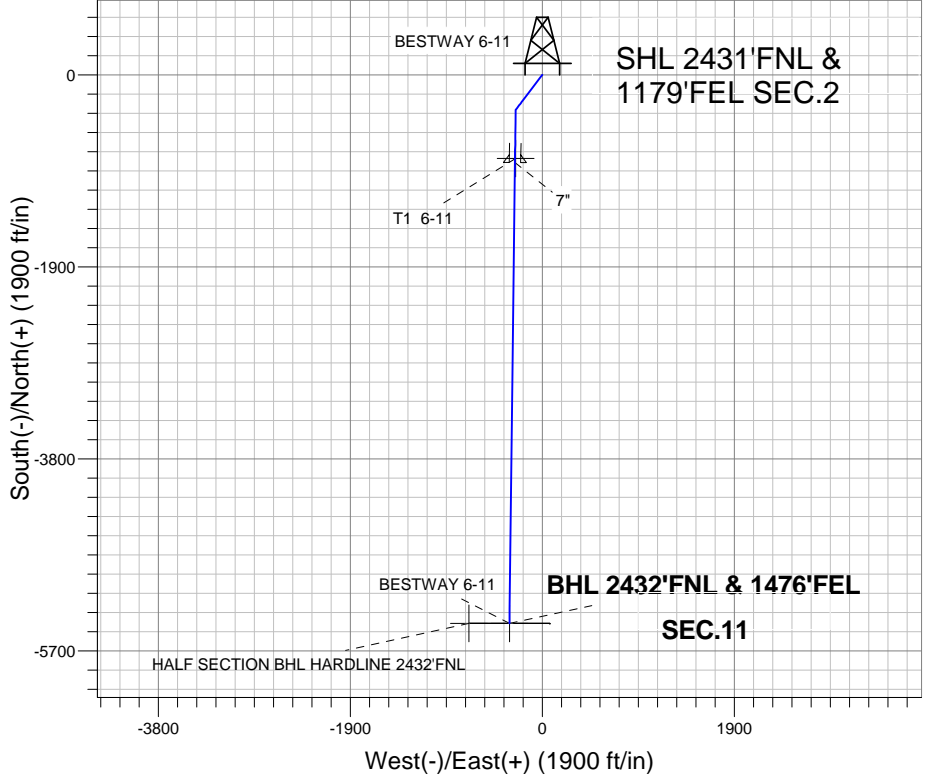
Magnetic Field
Strength: 53082.3srT
Dip Angle: 67.06°
Date: 2/9/2012
Model: IGRF2010

BESTWAY HOR PAD 2-5N-66W
BESTWAY 6-11
PLAN 1 (FEB 9 2012)
14:22, February 15 2012

ANNOTATIONS

TVD	MD	Annotation
1500.0	1500.0	KOP #1
6329.1	6358.3	KOP #2

South(-)/North(+) (1900 ft/in)





Mineral Resources Inc

SEC.2-T5N-R66W

BESTWAY HOR PAD 2-5N-66W

BESTWAY 6-11

Wellbore #1

Plan: PLAN 1 (FEB 9 2012)

Standard Planning Report

15 February, 2012

Plan Sections										
Measured Depth (ft)	Inclination (°)	Azimuth (°)	Vertical Depth (ft)	+N/-S (ft)	+E/-W (ft)	Dogleg Rate (°/100ft)	Build Rate (°/100ft)	Turn Rate (°/100ft)	TFO (°)	Target
0.0	0.00	0.00	0.0	0.0	0.0	0.00	0.00	0.00	0.00	
1,500.0	0.00	0.00	1,500.0	0.0	0.0	0.00	0.00	0.00	0.00	
1,900.4	8.01	217.26	1,899.1	-22.2	-16.9	2.00	2.00	0.00	217.26	
4,628.8	8.01	217.26	4,600.9	-324.8	-247.1	0.00	0.00	0.00	0.00	
5,029.2	0.00	0.00	5,000.0	-347.0	-264.0	2.00	-2.00	0.00	180.00	
6,358.3	0.00	0.00	6,329.1	-347.0	-264.0	0.00	0.00	0.00	0.00	
7,176.5	90.00	180.70	6,850.0	-867.8	-270.3	11.00	11.00	0.00	180.70	
11,737.3	90.00	180.70	6,850.0	-5,428.3	-325.8	0.00	0.00	0.00	0.00	BHL 2432'FNL & 14

Database:	Landmark	Local Co-ordinate Reference:	Well BESTWAY 6-11
Company:	Mineral Resources Inc	TVD Reference:	RKB @ 4716.0ft (KB RIG 14)
Project:	SEC.2-T5N-R66W	MD Reference:	RKB @ 4716.0ft (KB RIG 14)
Site:	BESTWAY HOR PAD 2-5N-66W	North Reference:	True
Well:	BESTWAY 6-11	Survey Calculation Method:	Minimum Curvature
Wellbore:	Wellbore #1		
Design:	PLAN 1 (FEB 9 2012)		

Planned Survey									
Measured Depth (ft)	Inclination (°)	Azimuth (°)	Vertical Depth (ft)	+N/-S (ft)	+E/-W (ft)	Vertical Section (ft)	Dogleg Rate (°/100ft)	Build Rate (°/100ft)	Turn Rate (°/100ft)
0.0	0.00	0.00	0.0	0.0	0.0	0.0	0.00	0.00	0.00
1.0	0.00	0.00	1.0	0.0	0.0	0.0	0.00	0.00	0.00
HALF SECTION BHL HARDLINE 2432'FNL									
40.0	0.00	0.00	40.0	0.0	0.0	0.0	0.00	0.00	0.00
80.0	0.00	0.00	80.0	0.0	0.0	0.0	0.00	0.00	0.00
120.0	0.00	0.00	120.0	0.0	0.0	0.0	0.00	0.00	0.00
160.0	0.00	0.00	160.0	0.0	0.0	0.0	0.00	0.00	0.00
200.0	0.00	0.00	200.0	0.0	0.0	0.0	0.00	0.00	0.00
240.0	0.00	0.00	240.0	0.0	0.0	0.0	0.00	0.00	0.00
280.0	0.00	0.00	280.0	0.0	0.0	0.0	0.00	0.00	0.00
320.0	0.00	0.00	320.0	0.0	0.0	0.0	0.00	0.00	0.00
360.0	0.00	0.00	360.0	0.0	0.0	0.0	0.00	0.00	0.00
400.0	0.00	0.00	400.0	0.0	0.0	0.0	0.00	0.00	0.00
440.0	0.00	0.00	440.0	0.0	0.0	0.0	0.00	0.00	0.00
480.0	0.00	0.00	480.0	0.0	0.0	0.0	0.00	0.00	0.00
520.0	0.00	0.00	520.0	0.0	0.0	0.0	0.00	0.00	0.00
560.0	0.00	0.00	560.0	0.0	0.0	0.0	0.00	0.00	0.00
600.0	0.00	0.00	600.0	0.0	0.0	0.0	0.00	0.00	0.00
640.0	0.00	0.00	640.0	0.0	0.0	0.0	0.00	0.00	0.00
680.0	0.00	0.00	680.0	0.0	0.0	0.0	0.00	0.00	0.00
720.0	0.00	0.00	720.0	0.0	0.0	0.0	0.00	0.00	0.00
760.0	0.00	0.00	760.0	0.0	0.0	0.0	0.00	0.00	0.00
800.0	0.00	0.00	800.0	0.0	0.0	0.0	0.00	0.00	0.00
840.0	0.00	0.00	840.0	0.0	0.0	0.0	0.00	0.00	0.00
880.0	0.00	0.00	880.0	0.0	0.0	0.0	0.00	0.00	0.00
920.0	0.00	0.00	920.0	0.0	0.0	0.0	0.00	0.00	0.00
960.0	0.00	0.00	960.0	0.0	0.0	0.0	0.00	0.00	0.00
1,000.0	0.00	0.00	1,000.0	0.0	0.0	0.0	0.00	0.00	0.00
1,040.0	0.00	0.00	1,040.0	0.0	0.0	0.0	0.00	0.00	0.00
1,080.0	0.00	0.00	1,080.0	0.0	0.0	0.0	0.00	0.00	0.00
1,120.0	0.00	0.00	1,120.0	0.0	0.0	0.0	0.00	0.00	0.00
1,160.0	0.00	0.00	1,160.0	0.0	0.0	0.0	0.00	0.00	0.00
1,200.0	0.00	0.00	1,200.0	0.0	0.0	0.0	0.00	0.00	0.00
1,240.0	0.00	0.00	1,240.0	0.0	0.0	0.0	0.00	0.00	0.00
1,280.0	0.00	0.00	1,280.0	0.0	0.0	0.0	0.00	0.00	0.00
1,320.0	0.00	0.00	1,320.0	0.0	0.0	0.0	0.00	0.00	0.00
1,360.0	0.00	0.00	1,360.0	0.0	0.0	0.0	0.00	0.00	0.00
1,400.0	0.00	0.00	1,400.0	0.0	0.0	0.0	0.00	0.00	0.00
1,440.0	0.00	0.00	1,440.0	0.0	0.0	0.0	0.00	0.00	0.00
1,480.0	0.00	0.00	1,480.0	0.0	0.0	0.0	0.00	0.00	0.00
1,500.0	0.00	0.00	1,500.0	0.0	0.0	0.0	0.00	0.00	0.00
KOP #1									
1,520.0	0.40	217.26	1,520.0	-0.1	0.0	0.1	2.00	2.00	0.00
1,560.0	1.20	217.26	1,560.0	-0.5	-0.4	0.5	2.00	2.00	0.00
1,600.0	2.00	217.26	1,600.0	-1.4	-1.1	1.4	2.00	2.00	0.00
1,640.0	2.80	217.26	1,639.9	-2.7	-2.1	2.8	2.00	2.00	0.00
1,680.0	3.60	217.26	1,679.9	-4.5	-3.4	4.7	2.00	2.00	0.00
1,720.0	4.40	217.26	1,719.8	-6.7	-5.1	7.0	2.00	2.00	0.00
1,760.0	5.20	217.26	1,759.6	-9.4	-7.1	9.8	2.00	2.00	0.00
1,800.0	6.00	217.26	1,799.5	-12.5	-9.5	13.0	2.00	2.00	0.00
1,840.0	6.80	217.26	1,839.2	-16.0	-12.2	16.7	2.00	2.00	0.00
1,880.0	7.60	217.26	1,878.9	-20.0	-15.2	20.9	2.00	2.00	0.00
1,900.4	8.01	217.26	1,899.1	-22.2	-16.9	23.2	2.00	2.00	0.00
1,920.0	8.01	217.26	1,918.5	-24.4	-18.6	25.5	0.00	0.00	0.00

Database:	Landmark	Local Co-ordinate Reference:	Well BESTWAY 6-11
Company:	Mineral Resources Inc	TVD Reference:	RKB @ 4716.0ft (KB RIG 14)
Project:	SEC.2-T5N-R66W	MD Reference:	RKB @ 4716.0ft (KB RIG 14)
Site:	BESTWAY HOR PAD 2-5N-66W	North Reference:	True
Well:	BESTWAY 6-11	Survey Calculation Method:	Minimum Curvature
Wellbore:	Wellbore #1		
Design:	PLAN 1 (FEB 9 2012)		

Planned Survey									
Measured Depth (ft)	Inclination (°)	Azimuth (°)	Vertical Depth (ft)	+N/-S (ft)	+E/-W (ft)	Vertical Section (ft)	Dogleg Rate (°/100ft)	Build Rate (°/100ft)	Turn Rate (°/100ft)
1,960.0	8.01	217.26	1,958.1	-28.8	-21.9	30.1	0.00	0.00	0.00
2,000.0	8.01	217.26	1,997.7	-33.3	-25.3	34.7	0.00	0.00	0.00
2,040.0	8.01	217.26	2,037.3	-37.7	-28.7	39.4	0.00	0.00	0.00
2,080.0	8.01	217.26	2,076.9	-42.1	-32.1	44.0	0.00	0.00	0.00
2,120.0	8.01	217.26	2,116.6	-46.6	-35.4	48.6	0.00	0.00	0.00
2,160.0	8.01	217.26	2,156.2	-51.0	-38.8	53.3	0.00	0.00	0.00
2,200.0	8.01	217.26	2,195.8	-55.5	-42.2	57.9	0.00	0.00	0.00
2,240.0	8.01	217.26	2,235.4	-59.9	-45.6	62.5	0.00	0.00	0.00
2,280.0	8.01	217.26	2,275.0	-64.3	-48.9	67.1	0.00	0.00	0.00
2,320.0	8.01	217.26	2,314.6	-68.8	-52.3	71.8	0.00	0.00	0.00
2,360.0	8.01	217.26	2,354.2	-73.2	-55.7	76.4	0.00	0.00	0.00
2,400.0	8.01	217.26	2,393.8	-77.6	-59.1	81.0	0.00	0.00	0.00
2,440.0	8.01	217.26	2,433.4	-82.1	-62.4	85.7	0.00	0.00	0.00
2,480.0	8.01	217.26	2,473.0	-86.5	-65.8	90.3	0.00	0.00	0.00
2,520.0	8.01	217.26	2,512.7	-90.9	-69.2	94.9	0.00	0.00	0.00
2,560.0	8.01	217.26	2,552.3	-95.4	-72.6	99.5	0.00	0.00	0.00
2,600.0	8.01	217.26	2,591.9	-99.8	-75.9	104.2	0.00	0.00	0.00
2,640.0	8.01	217.26	2,631.5	-104.2	-79.3	108.8	0.00	0.00	0.00
2,680.0	8.01	217.26	2,671.1	-108.7	-82.7	113.4	0.00	0.00	0.00
2,720.0	8.01	217.26	2,710.7	-113.1	-86.1	118.1	0.00	0.00	0.00
2,760.0	8.01	217.26	2,750.3	-117.5	-89.4	122.7	0.00	0.00	0.00
2,800.0	8.01	217.26	2,789.9	-122.0	-92.8	127.3	0.00	0.00	0.00
2,840.0	8.01	217.26	2,829.5	-126.4	-96.2	132.0	0.00	0.00	0.00
2,880.0	8.01	217.26	2,869.1	-130.9	-99.6	136.6	0.00	0.00	0.00
2,920.0	8.01	217.26	2,908.8	-135.3	-102.9	141.2	0.00	0.00	0.00
2,960.0	8.01	217.26	2,948.4	-139.7	-106.3	145.8	0.00	0.00	0.00
3,000.0	8.01	217.26	2,988.0	-144.2	-109.7	150.5	0.00	0.00	0.00
3,040.0	8.01	217.26	3,027.6	-148.6	-113.1	155.1	0.00	0.00	0.00
3,080.0	8.01	217.26	3,067.2	-153.0	-116.4	159.7	0.00	0.00	0.00
3,120.0	8.01	217.26	3,106.8	-157.5	-119.8	164.4	0.00	0.00	0.00
3,160.0	8.01	217.26	3,146.4	-161.9	-123.2	169.0	0.00	0.00	0.00
3,200.0	8.01	217.26	3,186.0	-166.3	-126.5	173.6	0.00	0.00	0.00
3,240.0	8.01	217.26	3,225.6	-170.8	-129.9	178.2	0.00	0.00	0.00
3,280.0	8.01	217.26	3,265.2	-175.2	-133.3	182.9	0.00	0.00	0.00
3,320.0	8.01	217.26	3,304.9	-179.6	-136.7	187.5	0.00	0.00	0.00
3,360.0	8.01	217.26	3,344.5	-184.1	-140.0	192.1	0.00	0.00	0.00
3,400.0	8.01	217.26	3,384.1	-188.5	-143.4	196.8	0.00	0.00	0.00
3,440.0	8.01	217.26	3,423.7	-192.9	-146.8	201.4	0.00	0.00	0.00
3,480.0	8.01	217.26	3,463.3	-197.4	-150.2	206.0	0.00	0.00	0.00
3,520.0	8.01	217.26	3,502.9	-201.8	-153.5	210.7	0.00	0.00	0.00
3,560.0	8.01	217.26	3,542.5	-206.3	-156.9	215.3	0.00	0.00	0.00
3,600.0	8.01	217.26	3,582.1	-210.7	-160.3	219.9	0.00	0.00	0.00
3,640.0	8.01	217.26	3,621.7	-215.1	-163.7	224.5	0.00	0.00	0.00
3,680.0	8.01	217.26	3,661.3	-219.6	-167.0	229.2	0.00	0.00	0.00
3,720.0	8.01	217.26	3,701.0	-224.0	-170.4	233.8	0.00	0.00	0.00
3,760.0	8.01	217.26	3,740.6	-228.4	-173.8	238.4	0.00	0.00	0.00
3,800.0	8.01	217.26	3,780.2	-232.9	-177.2	243.1	0.00	0.00	0.00
3,840.0	8.01	217.26	3,819.8	-237.3	-180.5	247.7	0.00	0.00	0.00
3,880.0	8.01	217.26	3,859.4	-241.7	-183.9	252.3	0.00	0.00	0.00
3,920.0	8.01	217.26	3,899.0	-246.2	-187.3	257.0	0.00	0.00	0.00
3,960.0	8.01	217.26	3,938.6	-250.6	-190.7	261.6	0.00	0.00	0.00
4,000.0	8.01	217.26	3,978.2	-255.0	-194.0	266.2	0.00	0.00	0.00
4,040.0	8.01	217.26	4,017.8	-259.5	-197.4	270.8	0.00	0.00	0.00
4,080.0	8.01	217.26	4,057.4	-263.9	-200.8	275.5	0.00	0.00	0.00

Database:	Landmark	Local Co-ordinate Reference:	Well BESTWAY 6-11
Company:	Mineral Resources Inc	TVD Reference:	RKB @ 4716.0ft (KB RIG 14)
Project:	SEC.2-T5N-R66W	MD Reference:	RKB @ 4716.0ft (KB RIG 14)
Site:	BESTWAY HOR PAD 2-5N-66W	North Reference:	True
Well:	BESTWAY 6-11	Survey Calculation Method:	Minimum Curvature
Wellbore:	Wellbore #1		
Design:	PLAN 1 (FEB 9 2012)		

Planned Survey									
Measured Depth (ft)	Inclination (°)	Azimuth (°)	Vertical Depth (ft)	+N/-S (ft)	+E/-W (ft)	Vertical Section (ft)	Dogleg Rate (°/100ft)	Build Rate (°/100ft)	Turn Rate (°/100ft)
4,120.0	8.01	217.26	4,097.0	-268.3	-204.2	280.1	0.00	0.00	0.00
4,160.0	8.01	217.26	4,136.7	-272.8	-207.5	284.7	0.00	0.00	0.00
4,200.0	8.01	217.26	4,176.3	-277.2	-210.9	289.4	0.00	0.00	0.00
4,240.0	8.01	217.26	4,215.9	-281.7	-214.3	294.0	0.00	0.00	0.00
4,280.0	8.01	217.26	4,255.5	-286.1	-217.7	298.6	0.00	0.00	0.00
4,320.0	8.01	217.26	4,295.1	-290.5	-221.0	303.2	0.00	0.00	0.00
4,360.0	8.01	217.26	4,334.7	-295.0	-224.4	307.9	0.00	0.00	0.00
4,400.0	8.01	217.26	4,374.3	-299.4	-227.8	312.5	0.00	0.00	0.00
4,440.0	8.01	217.26	4,413.9	-303.8	-231.2	317.1	0.00	0.00	0.00
4,480.0	8.01	217.26	4,453.5	-308.3	-234.5	321.8	0.00	0.00	0.00
4,520.0	8.01	217.26	4,493.1	-312.7	-237.9	326.4	0.00	0.00	0.00
4,560.0	8.01	217.26	4,532.8	-317.1	-241.3	331.0	0.00	0.00	0.00
4,600.0	8.01	217.26	4,572.4	-321.6	-244.7	335.7	0.00	0.00	0.00
4,628.8	8.01	217.26	4,600.9	-324.8	-247.1	339.0	0.00	0.00	0.00
4,640.0	7.78	217.26	4,612.0	-326.0	-248.0	340.3	2.00	-2.00	0.00
4,680.0	6.98	217.26	4,651.6	-330.1	-251.1	344.5	2.00	-2.00	0.00
4,720.0	6.18	217.26	4,691.4	-333.7	-253.9	348.3	2.00	-2.00	0.00
4,760.0	5.38	217.26	4,731.2	-336.9	-256.3	351.7	2.00	-2.00	0.00
4,800.0	4.58	217.26	4,771.0	-339.7	-258.5	354.6	2.00	-2.00	0.00
4,840.0	3.78	217.26	4,810.9	-342.0	-260.2	357.0	2.00	-2.00	0.00
4,880.0	2.98	217.26	4,850.9	-343.9	-261.6	359.0	2.00	-2.00	0.00
4,920.0	2.18	217.26	4,890.8	-345.3	-262.7	360.5	2.00	-2.00	0.00
4,960.0	1.38	217.26	4,930.8	-346.3	-263.5	361.5	2.00	-2.00	0.00
5,000.0	0.58	217.26	4,970.8	-346.9	-263.9	362.1	2.00	-2.00	0.00
5,029.2	0.00	0.00	5,000.0	-347.0	-264.0	362.2	2.00	-2.00	0.00
5,040.0	0.00	0.00	5,010.8	-347.0	-264.0	362.2	0.00	0.00	0.00
5,080.0	0.00	0.00	5,050.8	-347.0	-264.0	362.2	0.00	0.00	0.00
5,120.0	0.00	0.00	5,090.8	-347.0	-264.0	362.2	0.00	0.00	0.00
5,160.0	0.00	0.00	5,130.8	-347.0	-264.0	362.2	0.00	0.00	0.00
5,200.0	0.00	0.00	5,170.8	-347.0	-264.0	362.2	0.00	0.00	0.00
5,240.0	0.00	0.00	5,210.8	-347.0	-264.0	362.2	0.00	0.00	0.00
5,280.0	0.00	0.00	5,250.8	-347.0	-264.0	362.2	0.00	0.00	0.00
5,320.0	0.00	0.00	5,290.8	-347.0	-264.0	362.2	0.00	0.00	0.00
5,360.0	0.00	0.00	5,330.8	-347.0	-264.0	362.2	0.00	0.00	0.00
5,400.0	0.00	0.00	5,370.8	-347.0	-264.0	362.2	0.00	0.00	0.00
5,440.0	0.00	0.00	5,410.8	-347.0	-264.0	362.2	0.00	0.00	0.00
5,480.0	0.00	0.00	5,450.8	-347.0	-264.0	362.2	0.00	0.00	0.00
5,520.0	0.00	0.00	5,490.8	-347.0	-264.0	362.2	0.00	0.00	0.00
5,560.0	0.00	0.00	5,530.8	-347.0	-264.0	362.2	0.00	0.00	0.00
5,600.0	0.00	0.00	5,570.8	-347.0	-264.0	362.2	0.00	0.00	0.00
5,640.0	0.00	0.00	5,610.8	-347.0	-264.0	362.2	0.00	0.00	0.00
5,680.0	0.00	0.00	5,650.8	-347.0	-264.0	362.2	0.00	0.00	0.00
5,720.0	0.00	0.00	5,690.8	-347.0	-264.0	362.2	0.00	0.00	0.00
5,760.0	0.00	0.00	5,730.8	-347.0	-264.0	362.2	0.00	0.00	0.00
5,800.0	0.00	0.00	5,770.8	-347.0	-264.0	362.2	0.00	0.00	0.00
5,840.0	0.00	0.00	5,810.8	-347.0	-264.0	362.2	0.00	0.00	0.00
5,880.0	0.00	0.00	5,850.8	-347.0	-264.0	362.2	0.00	0.00	0.00
5,920.0	0.00	0.00	5,890.8	-347.0	-264.0	362.2	0.00	0.00	0.00
5,960.0	0.00	0.00	5,930.8	-347.0	-264.0	362.2	0.00	0.00	0.00
6,000.0	0.00	0.00	5,970.8	-347.0	-264.0	362.2	0.00	0.00	0.00
6,040.0	0.00	0.00	6,010.8	-347.0	-264.0	362.2	0.00	0.00	0.00
6,080.0	0.00	0.00	6,050.8	-347.0	-264.0	362.2	0.00	0.00	0.00
6,120.0	0.00	0.00	6,090.8	-347.0	-264.0	362.2	0.00	0.00	0.00
6,160.0	0.00	0.00	6,130.8	-347.0	-264.0	362.2	0.00	0.00	0.00

Database:	Landmark	Local Co-ordinate Reference:	Well BESTWAY 6-11
Company:	Mineral Resources Inc	TVD Reference:	RKB @ 4716.0ft (KB RIG 14)
Project:	SEC.2-T5N-R66W	MD Reference:	RKB @ 4716.0ft (KB RIG 14)
Site:	BESTWAY HOR PAD 2-5N-66W	North Reference:	True
Well:	BESTWAY 6-11	Survey Calculation Method:	Minimum Curvature
Wellbore:	Wellbore #1		
Design:	PLAN 1 (FEB 9 2012)		

Planned Survey									
Measured Depth (ft)	Inclination (°)	Azimuth (°)	Vertical Depth (ft)	+N/-S (ft)	+E/-W (ft)	Vertical Section (ft)	Dogleg Rate (°/100ft)	Build Rate (°/100ft)	Turn Rate (°/100ft)
6,200.0	0.00	0.00	6,170.8	-347.0	-264.0	362.2	0.00	0.00	0.00
6,240.0	0.00	0.00	6,210.8	-347.0	-264.0	362.2	0.00	0.00	0.00
6,280.0	0.00	0.00	6,250.8	-347.0	-264.0	362.2	0.00	0.00	0.00
6,320.0	0.00	0.00	6,290.8	-347.0	-264.0	362.2	0.00	0.00	0.00
6,358.3	0.00	0.00	6,329.1	-347.0	-264.0	362.2	0.00	0.00	0.00
KOP #2									
6,360.0	0.18	180.70	6,330.8	-347.0	-264.0	362.2	10.71	10.71	0.00
6,400.0	4.58	180.70	6,370.7	-348.7	-264.0	363.9	11.00	11.00	0.00
6,440.0	8.98	180.70	6,410.4	-353.4	-264.1	368.6	11.00	11.00	0.00
6,480.0	13.38	180.70	6,449.7	-361.1	-264.2	376.3	11.00	11.00	0.00
6,520.0	17.78	180.70	6,488.2	-371.9	-264.3	387.0	11.00	11.00	0.00
6,560.0	22.18	180.70	6,525.8	-385.5	-264.5	400.7	11.00	11.00	0.00
6,600.0	26.58	180.70	6,562.2	-402.1	-264.7	417.2	11.00	11.00	0.00
6,640.0	30.98	180.70	6,597.3	-421.3	-264.9	436.4	11.00	11.00	0.00
6,680.0	35.38	180.70	6,630.7	-443.2	-265.2	458.3	11.00	11.00	0.00
6,720.0	39.78	180.70	6,662.4	-467.6	-265.5	482.6	11.00	11.00	0.00
6,760.0	44.18	180.70	6,692.1	-494.3	-265.8	509.4	11.00	11.00	0.00
6,800.0	48.58	180.70	6,719.7	-523.3	-266.1	538.3	11.00	11.00	0.00
6,840.0	52.98	180.70	6,745.0	-554.3	-266.5	569.2	11.00	11.00	0.00
6,880.0	57.38	180.70	6,767.8	-587.1	-266.9	602.0	11.00	11.00	0.00
6,920.0	61.78	180.70	6,788.1	-621.6	-267.3	636.5	11.00	11.00	0.00
6,960.0	66.18	180.70	6,805.6	-657.5	-267.8	672.4	11.00	11.00	0.00
7,000.0	70.58	180.70	6,820.4	-694.7	-268.2	709.5	11.00	11.00	0.00
7,040.0	74.98	180.70	6,832.2	-732.9	-268.7	747.7	11.00	11.00	0.00
7,080.0	79.38	180.70	6,841.1	-771.9	-269.2	786.6	11.00	11.00	0.00
7,120.0	83.78	180.70	6,846.9	-811.4	-269.6	826.1	11.00	11.00	0.00
7,135.7	85.51	180.70	6,848.4	-827.0	-269.8	841.7	11.00	11.00	0.00
T1 6-11									
7,160.0	88.18	180.70	6,849.7	-851.3	-270.1	866.0	11.00	11.00	0.00
7,176.5	90.00	180.70	6,850.0	-867.8	-270.3	882.4	11.00	11.00	0.00
7"									
7,200.0	90.00	180.70	6,850.0	-891.3	-270.6	905.9	0.01	0.01	0.00
7,240.0	90.00	180.70	6,850.0	-931.3	-271.1	945.9	0.00	0.00	0.00
7,280.0	90.00	180.70	6,850.0	-971.3	-271.6	985.8	0.00	0.00	0.00
7,320.0	90.00	180.70	6,850.0	-1,011.3	-272.1	1,025.8	0.00	0.00	0.00
7,360.0	90.00	180.70	6,850.0	-1,051.3	-272.6	1,065.7	0.00	0.00	0.00
7,400.0	90.00	180.70	6,850.0	-1,091.3	-273.1	1,105.7	0.00	0.00	0.00
7,440.0	90.00	180.70	6,850.0	-1,131.3	-273.5	1,145.6	0.00	0.00	0.00
7,480.0	90.00	180.70	6,850.0	-1,171.3	-274.0	1,185.6	0.00	0.00	0.00
7,520.0	90.00	180.70	6,850.0	-1,211.3	-274.5	1,225.6	0.00	0.00	0.00
7,560.0	90.00	180.70	6,850.0	-1,251.3	-275.0	1,265.5	0.00	0.00	0.00
7,600.0	90.00	180.70	6,850.0	-1,291.3	-275.5	1,305.5	0.00	0.00	0.00
7,640.0	90.00	180.70	6,850.0	-1,331.3	-276.0	1,345.4	0.00	0.00	0.00
7,680.0	90.00	180.70	6,850.0	-1,371.3	-276.5	1,385.4	0.00	0.00	0.00
7,720.0	90.00	180.70	6,850.0	-1,411.3	-276.9	1,425.3	0.00	0.00	0.00
7,760.0	90.00	180.70	6,850.0	-1,451.3	-277.4	1,465.3	0.00	0.00	0.00
7,800.0	90.00	180.70	6,850.0	-1,491.3	-277.9	1,505.2	0.00	0.00	0.00
7,840.0	90.00	180.70	6,850.0	-1,531.3	-278.4	1,545.2	0.00	0.00	0.00
7,880.0	90.00	180.70	6,850.0	-1,571.3	-278.9	1,585.1	0.00	0.00	0.00
7,920.0	90.00	180.70	6,850.0	-1,611.3	-279.4	1,625.1	0.00	0.00	0.00
7,960.0	90.00	180.70	6,850.0	-1,651.2	-279.9	1,665.0	0.00	0.00	0.00
8,000.0	90.00	180.70	6,850.0	-1,691.2	-280.3	1,705.0	0.00	0.00	0.00
8,040.0	90.00	180.70	6,850.0	-1,731.2	-280.8	1,745.0	0.00	0.00	0.00

Database:	Landmark	Local Co-ordinate Reference:	Well BESTWAY 6-11
Company:	Mineral Resources Inc	TVD Reference:	RKB @ 4716.0ft (KB RIG 14)
Project:	SEC.2-T5N-R66W	MD Reference:	RKB @ 4716.0ft (KB RIG 14)
Site:	BESTWAY HOR PAD 2-5N-66W	North Reference:	True
Well:	BESTWAY 6-11	Survey Calculation Method:	Minimum Curvature
Wellbore:	Wellbore #1		
Design:	PLAN 1 (FEB 9 2012)		

Planned Survey									
Measured Depth (ft)	Inclination (°)	Azimuth (°)	Vertical Depth (ft)	+N/-S (ft)	+E/-W (ft)	Vertical Section (ft)	Dogleg Rate (°/100ft)	Build Rate (°/100ft)	Turn Rate (°/100ft)
8,080.0	90.00	180.70	6,850.0	-1,771.2	-281.3	1,784.9	0.00	0.00	0.00
8,120.0	90.00	180.70	6,850.0	-1,811.2	-281.8	1,824.9	0.00	0.00	0.00
8,160.0	90.00	180.70	6,850.0	-1,851.2	-282.3	1,864.8	0.00	0.00	0.00
8,200.0	90.00	180.70	6,850.0	-1,891.2	-282.8	1,904.8	0.00	0.00	0.00
8,240.0	90.00	180.70	6,850.0	-1,931.2	-283.3	1,944.7	0.00	0.00	0.00
8,280.0	90.00	180.70	6,850.0	-1,971.2	-283.8	1,984.7	0.00	0.00	0.00
8,320.0	90.00	180.70	6,850.0	-2,011.2	-284.2	2,024.6	0.00	0.00	0.00
8,360.0	90.00	180.70	6,850.0	-2,051.2	-284.7	2,064.6	0.00	0.00	0.00
8,400.0	90.00	180.70	6,850.0	-2,091.2	-285.2	2,104.5	0.00	0.00	0.00
8,440.0	90.00	180.70	6,850.0	-2,131.2	-285.7	2,144.5	0.00	0.00	0.00
8,480.0	90.00	180.70	6,850.0	-2,171.2	-286.2	2,184.5	0.00	0.00	0.00
8,520.0	90.00	180.70	6,850.0	-2,211.2	-286.7	2,224.4	0.00	0.00	0.00
8,560.0	90.00	180.70	6,850.0	-2,251.2	-287.2	2,264.4	0.00	0.00	0.00
8,600.0	90.00	180.70	6,850.0	-2,291.2	-287.6	2,304.3	0.00	0.00	0.00
8,640.0	90.00	180.70	6,850.0	-2,331.2	-288.1	2,344.3	0.00	0.00	0.00
8,680.0	90.00	180.70	6,850.0	-2,371.2	-288.6	2,384.2	0.00	0.00	0.00
8,720.0	90.00	180.70	6,850.0	-2,411.2	-289.1	2,424.2	0.00	0.00	0.00
8,760.0	90.00	180.70	6,850.0	-2,451.2	-289.6	2,464.1	0.00	0.00	0.00
8,800.0	90.00	180.70	6,850.0	-2,491.2	-290.1	2,504.1	0.00	0.00	0.00
8,840.0	90.00	180.70	6,850.0	-2,531.2	-290.6	2,544.0	0.00	0.00	0.00
8,880.0	90.00	180.70	6,850.0	-2,571.2	-291.0	2,584.0	0.00	0.00	0.00
8,920.0	90.00	180.70	6,850.0	-2,611.2	-291.5	2,624.0	0.00	0.00	0.00
8,960.0	90.00	180.70	6,850.0	-2,651.2	-292.0	2,663.9	0.00	0.00	0.00
9,000.0	90.00	180.70	6,850.0	-2,691.2	-292.5	2,703.9	0.00	0.00	0.00
9,040.0	90.00	180.70	6,850.0	-2,731.2	-293.0	2,743.8	0.00	0.00	0.00
9,080.0	90.00	180.70	6,850.0	-2,771.2	-293.5	2,783.8	0.00	0.00	0.00
9,120.0	90.00	180.70	6,850.0	-2,811.2	-294.0	2,823.7	0.00	0.00	0.00
9,160.0	90.00	180.70	6,850.0	-2,851.2	-294.5	2,863.7	0.00	0.00	0.00
9,200.0	90.00	180.70	6,850.0	-2,891.2	-294.9	2,903.6	0.00	0.00	0.00
9,240.0	90.00	180.70	6,850.0	-2,931.2	-295.4	2,943.6	0.00	0.00	0.00
9,280.0	90.00	180.70	6,850.0	-2,971.1	-295.9	2,983.5	0.00	0.00	0.00
9,320.0	90.00	180.70	6,850.0	-3,011.1	-296.4	3,023.5	0.00	0.00	0.00
9,360.0	90.00	180.70	6,850.0	-3,051.1	-296.9	3,063.4	0.00	0.00	0.00
9,400.0	90.00	180.70	6,850.0	-3,091.1	-297.4	3,103.4	0.00	0.00	0.00
9,440.0	90.00	180.70	6,850.0	-3,131.1	-297.9	3,143.4	0.00	0.00	0.00
9,480.0	90.00	180.70	6,850.0	-3,171.1	-298.3	3,183.3	0.00	0.00	0.00
9,520.0	90.00	180.70	6,850.0	-3,211.1	-298.8	3,223.3	0.00	0.00	0.00
9,560.0	90.00	180.70	6,850.0	-3,251.1	-299.3	3,263.2	0.00	0.00	0.00
9,600.0	90.00	180.70	6,850.0	-3,291.1	-299.8	3,303.2	0.00	0.00	0.00
9,640.0	90.00	180.70	6,850.0	-3,331.1	-300.3	3,343.1	0.00	0.00	0.00
9,680.0	90.00	180.70	6,850.0	-3,371.1	-300.8	3,383.1	0.00	0.00	0.00
9,720.0	90.00	180.70	6,850.0	-3,411.1	-301.3	3,423.0	0.00	0.00	0.00
9,760.0	90.00	180.70	6,850.0	-3,451.1	-301.7	3,463.0	0.00	0.00	0.00
9,800.0	90.00	180.70	6,850.0	-3,491.1	-302.2	3,502.9	0.00	0.00	0.00
9,840.0	90.00	180.70	6,850.0	-3,531.1	-302.7	3,542.9	0.00	0.00	0.00
9,880.0	90.00	180.70	6,850.0	-3,571.1	-303.2	3,582.9	0.00	0.00	0.00
9,920.0	90.00	180.70	6,850.0	-3,611.1	-303.7	3,622.8	0.00	0.00	0.00
9,960.0	90.00	180.70	6,850.0	-3,651.1	-304.2	3,662.8	0.00	0.00	0.00
10,000.0	90.00	180.70	6,850.0	-3,691.1	-304.7	3,702.7	0.00	0.00	0.00
10,040.0	90.00	180.70	6,850.0	-3,731.1	-305.2	3,742.7	0.00	0.00	0.00
10,080.0	90.00	180.70	6,850.0	-3,771.1	-305.6	3,782.6	0.00	0.00	0.00
10,120.0	90.00	180.70	6,850.0	-3,811.1	-306.1	3,822.6	0.00	0.00	0.00
10,160.0	90.00	180.70	6,850.0	-3,851.1	-306.6	3,862.5	0.00	0.00	0.00
10,200.0	90.00	180.70	6,850.0	-3,891.1	-307.1	3,902.5	0.00	0.00	0.00

Database:	Landmark	Local Co-ordinate Reference:	Well BESTWAY 6-11
Company:	Mineral Resources Inc	TVD Reference:	RKB @ 4716.0ft (KB RIG 14)
Project:	SEC.2-T5N-R66W	MD Reference:	RKB @ 4716.0ft (KB RIG 14)
Site:	BESTWAY HOR PAD 2-5N-66W	North Reference:	True
Well:	BESTWAY 6-11	Survey Calculation Method:	Minimum Curvature
Wellbore:	Wellbore #1		
Design:	PLAN 1 (FEB 9 2012)		

Planned Survey									
Measured Depth (ft)	Inclination (°)	Azimuth (°)	Vertical Depth (ft)	+N/-S (ft)	+E/-W (ft)	Vertical Section (ft)	Dogleg Rate (°/100ft)	Build Rate (°/100ft)	Turn Rate (°/100ft)
10,240.0	90.00	180.70	6,850.0	-3,931.1	-307.6	3,942.4	0.00	0.00	0.00
10,280.0	90.00	180.70	6,850.0	-3,971.1	-308.1	3,982.4	0.00	0.00	0.00
10,320.0	90.00	180.70	6,850.0	-4,011.1	-308.6	4,022.4	0.00	0.00	0.00
10,360.0	90.00	180.70	6,850.0	-4,051.1	-309.0	4,062.3	0.00	0.00	0.00
10,400.0	90.00	180.70	6,850.0	-4,091.1	-309.5	4,102.3	0.00	0.00	0.00
10,440.0	90.00	180.70	6,850.0	-4,131.1	-310.0	4,142.2	0.00	0.00	0.00
10,480.0	90.00	180.70	6,850.0	-4,171.1	-310.5	4,182.2	0.00	0.00	0.00
10,520.0	90.00	180.70	6,850.0	-4,211.1	-311.0	4,222.1	0.00	0.00	0.00
10,560.0	90.00	180.70	6,850.0	-4,251.1	-311.5	4,262.1	0.00	0.00	0.00
10,600.0	90.00	180.70	6,850.0	-4,291.1	-312.0	4,302.0	0.00	0.00	0.00
10,640.0	90.00	180.70	6,850.0	-4,331.0	-312.5	4,342.0	0.00	0.00	0.00
10,680.0	90.00	180.70	6,850.0	-4,371.0	-312.9	4,381.9	0.00	0.00	0.00
10,720.0	90.00	180.70	6,850.0	-4,411.0	-313.4	4,421.9	0.00	0.00	0.00
10,760.0	90.00	180.70	6,850.0	-4,451.0	-313.9	4,461.9	0.00	0.00	0.00
10,800.0	90.00	180.70	6,850.0	-4,491.0	-314.4	4,501.8	0.00	0.00	0.00
10,840.0	90.00	180.70	6,850.0	-4,531.0	-314.9	4,541.8	0.00	0.00	0.00
10,880.0	90.00	180.70	6,850.0	-4,571.0	-315.4	4,581.7	0.00	0.00	0.00
10,920.0	90.00	180.70	6,850.0	-4,611.0	-315.9	4,621.7	0.00	0.00	0.00
10,960.0	90.00	180.70	6,850.0	-4,651.0	-316.3	4,661.6	0.00	0.00	0.00
11,000.0	90.00	180.70	6,850.0	-4,691.0	-316.8	4,701.6	0.00	0.00	0.00
11,040.0	90.00	180.70	6,850.0	-4,731.0	-317.3	4,741.5	0.00	0.00	0.00
11,080.0	90.00	180.70	6,850.0	-4,771.0	-317.8	4,781.5	0.00	0.00	0.00
11,120.0	90.00	180.70	6,850.0	-4,811.0	-318.3	4,821.4	0.00	0.00	0.00
11,160.0	90.00	180.70	6,850.0	-4,851.0	-318.8	4,861.4	0.00	0.00	0.00
11,200.0	90.00	180.70	6,850.0	-4,891.0	-319.3	4,901.3	0.00	0.00	0.00
11,240.0	90.00	180.70	6,850.0	-4,931.0	-319.7	4,941.3	0.00	0.00	0.00
11,280.0	90.00	180.70	6,850.0	-4,971.0	-320.2	4,981.3	0.00	0.00	0.00
11,320.0	90.00	180.70	6,850.0	-5,011.0	-320.7	5,021.2	0.00	0.00	0.00
11,360.0	90.00	180.70	6,850.0	-5,051.0	-321.2	5,061.2	0.00	0.00	0.00
11,400.0	90.00	180.70	6,850.0	-5,091.0	-321.7	5,101.1	0.00	0.00	0.00
11,440.0	90.00	180.70	6,850.0	-5,131.0	-322.2	5,141.1	0.00	0.00	0.00
11,480.0	90.00	180.70	6,850.0	-5,171.0	-322.7	5,181.0	0.00	0.00	0.00
11,520.0	90.00	180.70	6,850.0	-5,211.0	-323.2	5,221.0	0.00	0.00	0.00
11,560.0	90.00	180.70	6,850.0	-5,251.0	-323.6	5,260.9	0.00	0.00	0.00
11,600.0	90.00	180.70	6,850.0	-5,291.0	-324.1	5,300.9	0.00	0.00	0.00
11,640.0	90.00	180.70	6,850.0	-5,331.0	-324.6	5,340.8	0.00	0.00	0.00
11,680.0	90.00	180.70	6,850.0	-5,371.0	-325.1	5,380.8	0.00	0.00	0.00
11,720.0	90.00	180.70	6,850.0	-5,411.0	-325.6	5,420.8	0.00	0.00	0.00
11,737.3	90.00	180.70	6,850.0	-5,428.3	-325.8	5,438.0	0.00	0.00	0.00
BHL 2432'FNL & 1476'FEL									

Plan Annotations					
	Measured Depth (ft)	Vertical Depth (ft)	Local Coordinates		Comment
			+N/-S (ft)	+E/-W (ft)	
	1,500.0	1,500.0	0.0	0.0	KOP #1
	6,358.3	6,329.1	-347.0	-264.0	KOP #2



Mineral Resources Inc

SEC.2-T5N-R66W

BESTWAY HOR PAD 2-5N-66W

BESTWAY 6-11

Wellbore #1

PLAN 1 (FEB 9 2012)

Anticollision Report

15 February, 2012

Company:	Mineral Resources Inc	Local Co-ordinate Reference:	Well BESTWAY 6-11
Project:	SEC.2-T5N-R66W	TVD Reference:	RKB @ 4716.0ft (KB RIG 14)
Reference Site:	BESTWAY HOR PAD 2-5N-66W	MD Reference:	RKB @ 4716.0ft (KB RIG 14)
Site Error:	0.0ft	North Reference:	True
Reference Well:	BESTWAY 6-11	Survey Calculation Method:	Minimum Curvature
Well Error:	0.0ft	Output errors are at	2.00 sigma
Reference Wellbore	Wellbore #1	Database:	Landmark
Reference Design:	PLAN 1 (FEB 9 2012)	Offset TVD Reference:	Offset Datum

Reference	PLAN 1 (FEB 9 2012)		
Filter type:	NO GLOBAL FILTER: Using user defined selection & filtering criteria		
Interpolation Method:	Stations	Error Model:	ISCWSA
Depth Range:	Unlimited	Scan Method:	Closest Approach 3D
Results Limited by:	Maximum center-center distance of 10,000.0ft	Error Surface:	Elliptical Conic
Warning Levels Evaluated at:	2.00 Sigma		

Survey Tool Program	Date 2/15/2012			
From (ft)	To (ft)	Survey (Wellbore)	Tool Name	Description
0.0	11,737.3	PLAN 1 (FEB 9 2012) (Wellbore #1)	MWD	MWD - Standard

Summary						
Site Name	Reference Measured Depth (ft)	Offset Measured Depth (ft)	Distance Between Centres (ft)	Distance Between Ellipses (ft)	Separation Factor	Warning
Offset Well - Wellbore - Design						
BESTWAY HOR PAD 2-5N-66W						
BESTWAY 12-2 - Wellbore #1 - PLAN 1 (FEB 9 2012)	200.0	198.0	61.9	61.3	92.453	CC, ES
BESTWAY 12-2 - Wellbore #1 - PLAN 1 (FEB 9 2012)	6,400.0	8,383.9	1,514.2	1,459.3	27.579	SF
POUDRE TRAIL 5 2-2-1 - Wellbore #1 - PLAN 1 (FEB 9 2012)	200.0	199.0	18.2	17.5	27.093	CC, ES
POUDRE TRAIL 5 2-2-1 - Wellbore #1 - PLAN 1 (FEB 9 2012)	500.0	497.2	28.2	26.2	13.849	SF

Offset Design	BESTWAY HOR PAD 2-5N-66W - BESTWAY 12-2 - Wellbore #1 - PLAN 1 (FEB 9 2012)												Offset Site Error:	0.0 ft
Survey Program:	0-MWD												Offset Well Error:	0.0 ft
Reference	Offset	Semi Major Axis		Distance		Minimum Separation		Separation Factor		Warning				
Measured Depth (ft)	Vertical Depth (ft)	Measured Depth (ft)	Vertical Depth (ft)	Reference (ft)	Offset (ft)	Highside Toolface (°)	Offset Wellbore Centre +N/-S (ft)	+E/-W (ft)	Between Centres (ft)	Between Ellipses (ft)	Minimum Separation (ft)	Separation Factor		
0.0	0.0	0.0	0.0	0.0	0.0	0.00	61.9	0.0	62.0					
100.0	100.0	98.0	98.0	0.1	0.1	0.00	61.9	0.0	61.9	61.7	0.22	278.288		
200.0	200.0	198.0	198.0	0.3	0.3	0.00	61.9	0.0	61.9	61.3	0.67	92.453	CC, ES	
300.0	300.0	296.6	296.6	0.6	0.6	1.12	63.0	1.2	63.0	61.9	1.11	56.616		
400.0	400.0	394.9	394.8	0.8	0.8	4.34	66.3	5.0	66.5	65.0	1.56	42.561		
500.0	500.0	492.8	492.3	1.0	1.0	8.98	71.7	11.3	72.8	70.8	2.03	35.811		
600.0	600.0	590.0	588.8	1.2	1.3	14.23	79.2	20.1	82.2	79.7	2.53	32.510		
700.0	700.0	686.3	684.0	1.5	1.6	19.36	88.8	31.2	95.2	92.1	3.06	31.139		
800.0	800.0	781.6	777.6	1.7	2.0	23.96	100.3	44.6	111.7	108.0	3.61	30.940		
900.0	900.0	875.5	869.2	1.9	2.4	27.86	113.6	60.1	131.7	127.5	4.19	31.473		
1,000.0	1,000.0	968.0	958.8	2.1	2.8	31.07	128.7	77.5	155.3	150.5	4.78	32.462		
1,100.0	1,100.0	1,058.8	1,046.0	2.4	3.3	33.68	145.3	96.8	182.2	176.8	5.40	33.734		
1,200.0	1,200.0	1,147.9	1,130.7	2.6	3.8	35.79	163.3	117.8	212.3	206.3	6.04	35.175		
1,300.0	1,300.0	1,235.9	1,213.5	2.8	4.4	37.52	182.8	140.4	245.5	238.8	6.69	36.712		
1,400.0	1,400.0	1,329.5	1,301.1	3.0	5.0	38.98	204.2	165.3	280.0	272.6	7.38	37.954		
1,500.0	1,500.0	1,423.2	1,388.8	3.3	5.7	40.12	225.7	190.2	314.7	306.6	8.07	39.000		
1,600.0	1,600.0	1,516.2	1,475.9	3.5	6.3	-176.21	247.0	214.9	351.0	343.7	7.33	47.886		
1,700.0	1,699.8	1,607.9	1,561.8	3.6	6.9	-175.46	268.0	239.3	390.6	382.9	7.74	50.446		
1,800.0	1,799.5	1,698.2	1,646.4	3.8	7.6	-174.86	288.6	263.3	433.5	425.3	8.14	53.227		
1,900.4	1,899.1	1,787.3	1,729.9	4.0	8.2	-174.39	309.1	287.0	479.7	471.1	8.53	56.220		
2,000.0	1,997.7	1,874.9	1,811.9	4.3	8.8	-174.10	329.1	310.3	527.0	518.0	8.97	58.745		
2,100.0	2,096.8	1,962.8	1,894.2	4.5	9.4	-173.86	349.2	333.6	574.6	565.1	9.42	60.999		
2,200.0	2,195.8	2,050.8	1,976.6	4.8	10.1	-173.65	369.4	357.0	622.1	612.2	9.87	63.009		

CC - Min centre to center distance or convergent point, SF - min separation factor, ES - min ellipse separation

Company:	Mineral Resources Inc	Local Co-ordinate Reference:	Well BESTWAY 6-11
Project:	SEC.2-T5N-R66W	TVD Reference:	RKB @ 4716.0ft (KB RIG 14)
Reference Site:	BESTWAY HOR PAD 2-5N-66W	MD Reference:	RKB @ 4716.0ft (KB RIG 14)
Site Error:	0.0ft	North Reference:	True
Reference Well:	BESTWAY 6-11	Survey Calculation Method:	Minimum Curvature
Well Error:	0.0ft	Output errors are at	2.00 sigma
Reference Wellbore	Wellbore #1	Database:	Landmark
Reference Design:	PLAN 1 (FEB 9 2012)	Offset TVD Reference:	Offset Datum

Offset Design BESTWAY HOR PAD 2-5N-66W - BESTWAY 12-2 - Wellbore #1 - PLAN 1 (FEB 9 2012)												Offset Site Error:	0.0ft
Survey Program: 0-MWD												Offset Well Error:	0.0ft
Reference		Offset		Semi Major Axis			Distance						Warning
Measured Depth (ft)	Vertical Depth (ft)	Measured Depth (ft)	Vertical Depth (ft)	Reference (ft)	Offset (ft)	Highside Toolface (°)	Offset Wellbore Centre +N/-S (ft)	+E/-W (ft)	Between Centres (ft)	Between Ellipses (ft)	Minimum Separation (ft)	Separation Factor	
2,300.0	2,294.8	2,138.7	2,058.9	5.0	10.7	-173.48	389.5	380.4	669.7	659.3	10.33	64.808	
2,400.0	2,393.8	2,226.7	2,141.3	5.3	11.3	-173.33	409.6	403.8	717.2	706.4	10.80	66.425	
2,500.0	2,492.8	2,314.6	2,223.6	5.6	11.9	-173.19	429.8	427.2	764.8	753.5	11.27	67.882	
2,600.0	2,591.9	2,402.6	2,306.0	5.9	12.6	-173.07	449.9	450.6	812.4	800.6	11.74	69.202	
2,700.0	2,690.9	2,490.5	2,388.4	6.2	13.2	-172.97	470.0	473.9	859.9	847.7	12.22	70.399	
2,800.0	2,789.9	2,578.5	2,470.7	6.5	13.8	-172.88	490.2	497.3	907.5	894.8	12.69	71.490	
2,900.0	2,888.9	2,666.4	2,553.1	6.8	14.5	-172.79	510.3	520.7	955.1	941.9	13.18	72.487	
3,000.0	2,988.0	2,754.4	2,635.4	7.1	15.1	-172.72	530.4	544.1	1,002.7	989.0	13.66	73.400	
3,100.0	3,087.0	2,842.3	2,717.8	7.4	15.7	-172.65	550.6	567.5	1,050.3	1,036.1	14.15	74.241	
3,200.0	3,186.0	2,930.3	2,800.1	7.8	16.3	-172.58	570.7	590.8	1,097.8	1,083.2	14.64	75.015	
3,300.0	3,285.0	3,018.2	2,882.5	8.1	17.0	-172.52	590.9	614.2	1,145.4	1,130.3	15.13	75.730	
3,400.0	3,384.1	3,106.2	2,964.9	8.4	17.6	-172.47	611.0	637.6	1,193.0	1,177.4	15.62	76.393	
3,500.0	3,483.1	3,194.1	3,047.2	8.7	18.2	-172.42	631.1	661.0	1,240.6	1,224.5	16.11	77.008	
3,600.0	3,582.1	3,282.1	3,129.6	9.1	18.8	-172.38	651.3	684.4	1,288.2	1,271.6	16.60	77.580	
3,700.0	3,681.1	3,370.0	3,211.9	9.4	19.5	-172.33	671.4	707.8	1,335.8	1,318.7	17.10	78.114	
3,800.0	3,780.2	3,458.0	3,294.3	9.7	20.1	-172.29	691.5	731.1	1,383.4	1,365.8	17.60	78.612	
3,900.0	3,879.2	3,545.9	3,376.7	10.1	20.7	-172.26	711.7	754.5	1,430.9	1,412.8	18.10	79.078	
4,000.0	3,978.2	3,633.9	3,459.0	10.4	21.4	-172.22	731.8	777.9	1,478.5	1,459.9	18.59	79.515	
4,100.0	4,077.2	3,721.8	3,541.4	10.7	22.0	-172.19	751.9	801.3	1,526.1	1,507.0	19.09	79.925	
4,200.0	4,176.3	3,809.8	3,623.7	11.1	22.6	-172.16	772.1	824.7	1,573.7	1,554.1	19.60	80.311	
4,300.0	4,275.3	3,897.7	3,706.1	11.4	23.3	-172.13	792.2	848.1	1,621.3	1,601.2	20.10	80.674	
4,400.0	4,374.3	3,985.7	3,788.4	11.8	23.9	-172.10	812.3	871.4	1,668.9	1,648.3	20.60	81.017	
4,500.0	4,473.3	4,073.6	3,870.8	12.1	24.5	-172.08	832.5	894.8	1,716.5	1,695.4	21.10	81.341	
4,600.0	4,572.4	4,161.6	3,953.2	12.4	25.1	-172.05	852.6	918.2	1,764.1	1,742.4	21.61	81.646	
4,628.8	4,600.9	4,186.9	3,976.8	12.5	25.3	-172.05	858.4	924.9	1,777.7	1,756.0	21.75	81.731	
4,700.0	4,671.5	4,249.9	4,035.9	12.8	25.8	-172.13	872.8	941.7	1,810.9	1,788.6	22.24	81.439	
4,800.0	4,771.0	4,339.8	4,120.0	13.0	26.4	-172.22	893.4	965.6	1,854.7	1,831.8	22.89	81.033	
4,900.0	4,870.8	4,431.1	4,205.5	13.2	27.1	-172.28	914.3	989.9	1,895.5	1,871.9	23.52	80.582	
5,000.0	4,970.8	4,523.7	4,292.3	13.4	27.7	-172.32	935.5	1,014.5	1,933.0	1,908.9	24.13	80.092	
5,029.2	5,000.0	4,551.0	4,317.9	13.4	27.9	44.93	941.8	1,021.7	1,943.4	1,919.0	24.35	79.794	
5,100.0	5,070.8	4,617.3	4,379.9	13.5	28.4	44.99	957.0	1,039.4	1,968.1	1,943.4	24.70	79.670	
5,200.0	5,170.8	4,711.0	4,467.6	13.7	29.1	45.06	978.4	1,064.3	2,003.1	1,977.9	25.19	79.513	
5,300.0	5,270.8	4,802.1	4,558.6	13.8	30.5	45.23	1,000.6	1,124.9	2,035.6	2,009.6	26.07	78.090	
5,400.0	5,370.8	5,301.9	5,036.9	14.0	31.7	45.38	1,079.3	1,181.5	2,057.6	2,030.6	27.03	76.124	
5,500.0	5,470.8	5,383.9	5,050.0	14.2	40.9	-0.65	1,086.9	-280.3	1,991.0	1,937.4	53.61	37.142	
5,600.0	5,570.8	5,383.9	5,050.0	14.3	40.9	-0.65	1,086.9	-280.3	1,923.0	1,869.2	53.79	35.749	
5,700.0	5,670.8	5,383.9	5,050.0	14.5	40.9	-0.65	1,086.9	-280.3	1,857.9	1,803.9	53.98	34.419	
5,800.0	5,770.8	5,383.9	5,050.0	14.7	40.9	-0.65	1,086.9	-280.3	1,795.9	1,741.8	54.17	33.156	
5,900.0	5,870.8	5,383.9	5,050.0	14.8	40.9	-0.65	1,086.9	-280.3	1,737.6	1,683.2	54.36	31.967	
6,000.0	5,970.8	5,383.9	5,050.0	15.0	40.9	-0.65	1,086.9	-280.3	1,683.1	1,628.6	54.55	30.857	
6,100.0	6,070.8	5,383.9	5,050.0	15.2	40.9	-0.65	1,086.9	-280.3	1,633.0	1,578.3	54.74	29.833	
6,200.0	6,170.8	5,383.9	5,050.0	15.4	40.9	-0.65	1,086.9	-280.3	1,587.6	1,532.7	54.93	28.902	
6,300.0	6,270.8	5,383.9	5,050.0	15.5	40.9	-0.65	1,086.9	-280.3	1,547.3	1,492.2	55.12	28.070	
6,358.3	6,329.1	5,383.9	5,050.0	15.6	40.9	-0.65	1,086.9	-280.3	1,526.4	1,471.1	55.24	27.633	
6,400.0	6,370.7	5,383.9	5,050.0	15.7	40.9	178.68	1,086.9	-280.4	1,514.2	1,459.3	54.90	27.579 SF	
6,450.0	6,420.3	5,384.1	5,050.0	15.9	40.9	178.70	1,086.9	-280.5	1,505.3	1,451.1	54.19	27.780	
6,494.5	6,463.7	5,384.3	5,050.0	16.0	40.9	178.70	1,086.9	-280.7	1,502.7	1,449.5	53.21	28.241	
6,500.0	6,469.0	5,384.3	5,050.0	16.0	40.9	178.70	1,086.9	-280.8	1,502.8	1,449.7	53.07	28.317	
6,550.0	6,516.5	5,384.7	5,050.0	16.2	40.9	178.67	1,086.9	-281.1	1,506.7	1,455.1	51.57	29.219	
6,600.0	6,562.2	5,385.2	5,050.0	16.5	40.9	178.63	1,086.9	-281.6	1,517.0	1,467.3	49.70	30.522	
6,650.0	6,605.8	5,385.8	5,050.0	16.8	40.9	178.56	1,086.9	-282.2	1,533.4	1,485.9	47.51	32.277	
6,700.0	6,646.8	5,386.4	5,050.0	17.1	40.9	178.46	1,086.9	-282.9	1,555.7	1,510.6	45.02	34.552	

CC - Min centre to center distance or convergent point, SF - min separation factor, ES - min ellipse separation

Company:	Mineral Resources Inc	Local Co-ordinate Reference:	Well BESTWAY 6-11
Project:	SEC.2-T5N-R66W	TVD Reference:	RKB @ 4716.0ft (KB RIG 14)
Reference Site:	BESTWAY HOR PAD 2-5N-66W	MD Reference:	RKB @ 4716.0ft (KB RIG 14)
Site Error:	0.0ft	North Reference:	True
Reference Well:	BESTWAY 6-11	Survey Calculation Method:	Minimum Curvature
Well Error:	0.0ft	Output errors are at	2.00 sigma
Reference Wellbore	Wellbore #1	Database:	Landmark
Reference Design:	PLAN 1 (FEB 9 2012)	Offset TVD Reference:	Offset Datum

Offset Design BESTWAY HOR PAD 2-5N-66W - BESTWAY 12-2 - Wellbore #1 - PLAN 1 (FEB 9 2012)												Offset Site Error:	0.0ft
Survey Program: 0-MWD												Offset Well Error:	0.0ft
Reference		Offset		Semi Major Axis			Distance						Warning
Measured Depth (ft)	Vertical Depth (ft)	Measured Depth (ft)	Vertical Depth (ft)	Reference (ft)	Offset (ft)	Highside Toolface (°)	Offset Wellbore Centre +N/-S (ft)	+E/-W (ft)	Between Centres (ft)	Between Ellipses (ft)	Minimum Separation (ft)	Separation Factor	
6,750.0	6,684.9	8,387.2	6,850.0	17.5	41.0	178.32	1,086.9	-283.6	1,583.3	1,541.0	42.30	37.429	
6,800.0	6,719.7	8,388.0	6,850.0	17.9	41.0	178.14	1,086.9	-284.5	1,615.7	1,576.3	39.40	41.006	
6,850.0	6,751.0	8,389.0	6,850.0	18.3	41.0	177.88	1,086.9	-285.4	1,652.4	1,616.0	36.41	45.382	
6,900.0	6,778.3	8,389.9	6,850.0	18.8	41.0	177.52	1,086.9	-286.4	1,692.7	1,659.3	33.44	50.621	
6,950.0	6,801.5	8,391.0	6,850.0	19.4	41.0	176.99	1,086.8	-287.4	1,736.1	1,705.4	30.64	56.663	
7,000.0	6,820.4	8,392.1	6,850.0	20.0	41.1	176.14	1,086.8	-288.5	1,781.9	1,753.7	28.22	63.143	
7,050.0	6,834.7	8,393.2	6,850.0	20.6	41.1	174.61	1,086.8	-289.6	1,829.6	1,803.1	26.50	69.050	
7,100.0	6,844.4	8,394.4	6,850.0	21.2	41.1	171.10	1,086.8	-290.8	1,878.5	1,852.4	26.09	72.002	
7,150.0	6,849.3	8,395.5	6,850.0	21.9	41.1	155.76	1,086.8	-292.0	1,928.2	1,897.0	31.25	61.699	
7,176.5	6,850.0	8,396.1	6,850.0	22.3	41.1	92.49	1,086.8	-292.6	1,954.7	1,907.7	47.00	41.587	
7,200.0	6,850.0	8,396.7	6,850.0	22.6	41.1	92.46	1,086.8	-293.1	1,978.2	1,930.9	47.34	41.789	
7,300.0	6,850.0	8,399.1	6,850.0	24.1	41.2	92.34	1,086.8	-295.5	2,078.2	2,029.4	48.81	42.580	
7,400.0	6,850.0	8,401.4	6,850.0	25.6	41.2	92.23	1,086.7	-297.8	2,178.2	2,127.8	50.33	43.273	
7,500.0	6,850.0	8,403.8	6,850.0	27.1	41.3	92.14	1,086.7	-300.2	2,278.1	2,226.2	51.91	43.883	
7,600.0	6,850.0	8,406.1	6,850.0	28.7	41.3	92.05	1,086.7	-302.5	2,378.1	2,324.6	53.53	44.422	
7,700.0	6,850.0	8,408.5	6,850.0	30.4	41.4	91.96	1,086.6	-304.9	2,478.1	2,422.9	55.19	44.901	
7,800.0	6,850.0	8,410.8	6,850.0	32.1	41.4	91.89	1,086.6	-307.3	2,578.0	2,521.2	56.88	45.328	
7,900.0	6,850.0	8,413.2	6,850.0	33.7	41.5	91.82	1,086.6	-309.6	2,678.0	2,619.4	58.59	45.711	
8,000.0	6,850.0	8,415.5	6,850.0	35.5	41.5	91.75	1,086.6	-312.0	2,778.0	2,717.7	60.32	46.056	
8,100.0	6,850.0	8,417.9	6,850.0	37.2	41.6	91.69	1,086.5	-314.3	2,878.0	2,815.9	62.07	46.368	
8,200.0	6,850.0	8,420.2	6,850.0	39.0	41.6	91.63	1,086.5	-316.7	2,977.9	2,914.1	63.83	46.652	
8,300.0	6,850.0	8,422.6	6,850.0	40.7	41.7	91.58	1,086.5	-319.0	3,077.9	3,012.3	65.61	46.910	
8,400.0	6,850.0	8,424.9	6,850.0	42.5	41.7	91.53	1,086.5	-321.4	3,177.9	3,110.5	67.40	47.146	
8,500.0	6,850.0	8,427.3	6,850.0	44.3	41.8	91.48	1,086.4	-323.7	3,277.8	3,208.6	69.21	47.363	
8,600.0	6,850.0	8,429.7	6,850.0	46.1	41.8	91.44	1,086.4	-326.1	3,377.8	3,306.8	71.02	47.562	
8,700.0	6,850.0	8,432.0	6,850.0	47.9	41.9	91.40	1,086.4	-328.4	3,477.8	3,405.0	72.84	47.746	
8,800.0	6,850.0	8,434.4	6,850.0	49.8	41.9	91.36	1,086.3	-330.8	3,577.8	3,503.1	74.67	47.916	
8,900.0	6,850.0	8,436.7	6,850.0	51.6	42.0	91.32	1,086.3	-333.1	3,677.7	3,601.2	76.50	48.074	
9,000.0	6,850.0	8,439.1	6,850.0	53.4	42.0	91.29	1,086.3	-335.5	3,777.7	3,699.4	78.34	48.221	
9,100.0	6,850.0	8,441.4	6,850.0	55.3	42.1	91.26	1,086.3	-337.8	3,877.7	3,797.5	80.19	48.359	
9,200.0	6,850.0	8,443.8	6,850.0	57.1	42.1	91.22	1,086.2	-340.2	3,977.7	3,895.6	82.04	48.487	
9,300.0	6,850.0	8,446.1	6,850.0	59.0	42.2	91.19	1,086.2	-342.6	4,077.6	3,993.7	83.89	48.606	
9,400.0	6,850.0	8,448.5	6,850.0	60.8	42.2	91.17	1,086.2	-344.9	4,177.6	4,091.9	85.75	48.719	
9,500.0	6,850.0	8,450.8	6,850.0	62.7	42.3	91.14	1,086.2	-347.3	4,277.6	4,190.0	87.61	48.825	
9,600.0	6,850.0	8,453.2	6,850.0	64.5	42.3	91.11	1,086.1	-349.6	4,377.5	4,288.1	89.48	48.924	
9,700.0	6,850.0	8,455.5	6,850.0	66.4	42.4	91.09	1,086.1	-352.0	4,477.5	4,386.2	91.34	49.018	
9,800.0	6,850.0	8,457.9	6,850.0	68.3	42.4	91.06	1,086.1	-354.3	4,577.5	4,484.3	93.22	49.106	
9,900.0	6,850.0	8,460.3	6,850.0	70.1	42.5	91.04	1,086.1	-356.7	4,677.5	4,582.4	95.09	49.190	
10,000.0	6,850.0	8,462.6	6,850.0	72.0	42.5	91.02	1,086.0	-359.0	4,777.4	4,680.5	96.97	49.269	
10,100.0	6,850.0	8,465.0	6,850.0	73.9	42.6	91.00	1,086.0	-361.4	4,877.4	4,778.6	98.84	49.345	
10,200.0	6,850.0	8,467.3	6,850.0	75.8	42.6	90.98	1,086.0	-363.7	4,977.4	4,876.7	100.72	49.416	
10,300.0	6,850.0	8,469.7	6,850.0	77.6	42.7	90.96	1,085.9	-366.1	5,077.4	4,974.7	102.61	49.484	
10,400.0	6,850.0	8,472.0	6,850.0	79.5	42.7	90.94	1,085.9	-368.4	5,177.3	5,072.8	104.49	49.549	
10,500.0	6,850.0	8,474.4	6,850.0	81.4	42.8	90.92	1,085.9	-370.8	5,277.3	5,170.9	106.37	49.610	
10,600.0	6,850.0	8,476.7	6,850.0	83.3	42.8	90.91	1,085.9	-373.2	5,377.3	5,269.0	108.26	49.669	
10,700.0	6,850.0	8,479.1	6,850.0	85.2	42.9	90.89	1,085.8	-375.5	5,477.2	5,367.1	110.15	49.725	
10,800.0	6,850.0	8,481.4	6,850.0	87.1	42.9	90.87	1,085.8	-377.9	5,577.2	5,465.2	112.04	49.779	
10,900.0	6,850.0	8,483.8	6,850.0	89.0	43.0	90.86	1,085.8	-380.2	5,677.2	5,563.3	113.93	49.830	
11,000.0	6,850.0	8,486.1	6,850.0	90.9	43.0	90.84	1,085.8	-382.6	5,777.2	5,661.3	115.82	49.880	
11,100.0	6,850.0	8,488.5	6,850.0	92.7	43.1	90.83	1,085.7	-384.9	5,877.1	5,759.4	117.72	49.927	
11,200.0	6,850.0	8,490.9	6,850.0	94.6	43.2	90.81	1,085.7	-387.3	5,977.1	5,857.5	119.61	49.972	
11,300.0	6,850.0	8,493.2	6,850.0	96.5	43.2	90.80	1,085.7	-389.6	6,077.1	5,955.6	121.50	50.015	

CC - Min centre to center distance or convergent point, SF - min separation factor, ES - min ellipse separation

Company:	Mineral Resources Inc	Local Co-ordinate Reference:	Well BESTWAY 6-11
Project:	SEC.2-T5N-R66W	TVD Reference:	RKB @ 4716.0ft (KB RIG 14)
Reference Site:	BESTWAY HOR PAD 2-5N-66W	MD Reference:	RKB @ 4716.0ft (KB RIG 14)
Site Error:	0.0ft	North Reference:	True
Reference Well:	BESTWAY 6-11	Survey Calculation Method:	Minimum Curvature
Well Error:	0.0ft	Output errors are at	2.00 sigma
Reference Wellbore	Wellbore #1	Database:	Landmark
Reference Design:	PLAN 1 (FEB 9 2012)	Offset TVD Reference:	Offset Datum

Offset Design BESTWAY HOR PAD 2-5N-66W - BESTWAY 12-2 - Wellbore #1 - PLAN 1 (FEB 9 2012)												Offset Site Error:	0.0 ft
Survey Program: 0-MWD												Offset Well Error:	0.0 ft
Reference	Offset	Semi Major Axis		Distance									Warning
Measured Depth (ft)	Vertical Depth (ft)	Measured Depth (ft)	Vertical Depth (ft)	Reference (ft)	Offset (ft)	Highside Toolface (°)	Offset Wellbore Centre +N/-S (ft)	+E/-W (ft)	Between Centres (ft)	Between Ellipses (ft)	Minimum Separation (ft)	Separation Factor	
11,400.0	6,850.0	8,495.6	6,850.0	98.4	43.3	90.79	1,085.7	-392.0	6,177.0	6,053.6	123.40	50.057	
11,500.0	6,850.0	8,497.9	6,850.0	100.3	43.3	90.78	1,085.6	-394.3	6,277.0	6,151.7	125.30	50.097	
11,600.0	6,850.0	8,500.3	6,850.0	102.2	43.4	90.76	1,085.6	-396.7	6,377.0	6,249.8	127.19	50.136	
11,700.0	6,850.0	8,502.6	6,850.0	104.1	43.4	90.75	1,085.6	-399.0	6,477.0	6,347.9	129.09	50.173	
11,737.3	6,850.0	8,503.5	6,850.0	104.8	43.4	90.75	1,085.6	-399.9	6,514.3	6,384.5	129.80	50.186	

Company:	Mineral Resources Inc	Local Co-ordinate Reference:	Well BESTWAY 6-11
Project:	SEC.2-T5N-R66W	TVD Reference:	RKB @ 4716.0ft (KB RIG 14)
Reference Site:	BESTWAY HOR PAD 2-5N-66W	MD Reference:	RKB @ 4716.0ft (KB RIG 14)
Site Error:	0.0ft	North Reference:	True
Reference Well:	BESTWAY 6-11	Survey Calculation Method:	Minimum Curvature
Well Error:	0.0ft	Output errors are at	2.00 sigma
Reference Wellbore	Wellbore #1	Database:	Landmark
Reference Design:	PLAN 1 (FEB 9 2012)	Offset TVD Reference:	Offset Datum

Offset Design												Offset Site Error:	0.0ft
Survey Program: 0-MWD												Offset Well Error:	0.0ft
Reference		Offset		Semi Major Axis			Distance						
Measured Depth (ft)	Vertical Depth (ft)	Measured Depth (ft)	Vertical Depth (ft)	Reference (ft)	Offset (ft)	Highside Toolface (°)	Offset Wellbore Centre +N/-S (ft)	+E/-W (ft)	Between Centres (ft)	Between Ellipses (ft)	Minimum Separation (ft)	Separation Factor	Warning
0.0	0.0	0.0	0.0	0.0	0.0	0.00	18.2	0.0	18.2	18.2	0.00	N/A	
100.0	100.0	99.0	99.0	0.1	0.1	0.00	18.2	0.0	18.2	18.0	0.22	81.413	
200.0	200.0	199.0	199.0	0.3	0.3	0.00	18.2	0.0	18.2	17.5	0.67	27.093 CC, ES	
300.0	300.0	298.7	298.7	0.6	0.6	4.72	18.9	1.6	19.0	17.8	1.12	16.997	
400.0	400.0	398.2	398.0	0.8	0.8	16.70	20.9	6.3	21.9	20.3	1.57	13.980	
500.0	500.0	497.2	496.6	1.0	1.0	30.10	24.4	14.1	28.2	26.2	2.04	13.849 SF	
600.0	600.0	595.5	594.2	1.2	1.3	40.67	29.1	25.0	38.6	36.1	2.54	15.222	
700.0	700.0	692.8	690.4	1.5	1.6	47.86	35.1	38.8	53.0	49.9	3.06	17.329	
800.0	800.0	789.0	784.9	1.7	2.0	52.61	42.3	55.3	71.1	67.5	3.60	19.752	
900.0	900.0	883.9	877.5	1.9	2.4	55.80	50.6	74.5	92.6	88.5	4.16	22.279	
1,000.0	1,000.0	977.3	967.8	2.1	2.9	58.00	60.0	96.1	117.5	112.8	4.74	24.800	
1,100.0	1,100.0	1,069.0	1,055.8	2.4	3.4	59.58	70.4	119.9	145.6	140.3	5.34	27.261	
1,200.0	1,200.0	1,159.0	1,141.2	2.6	3.9	60.74	81.7	145.8	176.8	170.9	5.97	29.634	
1,300.0	1,300.0	1,247.0	1,223.8	2.8	4.5	61.62	93.7	173.5	211.0	204.4	6.61	31.911	
1,400.0	1,400.0	1,333.0	1,303.7	3.0	5.1	62.30	106.5	202.7	248.1	240.8	7.28	34.090	
1,500.0	1,500.0	1,416.8	1,380.6	3.3	5.8	62.83	119.8	233.4	287.9	279.9	7.96	36.176	
1,600.0	1,600.0	1,500.0	1,455.8	3.5	6.5	-153.71	133.9	265.8	331.7	324.4	7.27	45.645	
1,700.0	1,699.8	1,575.4	1,523.2	3.6	7.2	-153.21	147.5	297.0	380.8	373.1	7.66	49.684	
1,800.0	1,799.5	1,649.1	1,588.1	3.8	7.9	-152.82	161.4	328.9	434.8	426.7	8.05	54.011	
1,900.4	1,899.1	1,725.7	1,654.7	4.0	8.7	-152.52	176.4	363.5	493.4	484.9	8.44	58.460	
2,000.0	1,997.7	1,805.4	1,724.0	4.3	9.5	-152.92	192.2	399.6	553.0	544.1	8.88	62.291	
2,100.0	2,096.8	1,885.4	1,793.6	4.5	10.3	-153.25	208.0	435.9	612.8	603.5	9.33	65.685	
2,200.0	2,195.8	1,965.5	1,863.2	4.8	11.2	-153.51	223.8	472.2	672.7	662.9	9.79	68.695	
2,300.0	2,294.8	2,045.6	1,932.8	5.0	12.0	-153.74	239.6	508.5	732.5	722.3	10.26	71.378	
2,400.0	2,393.8	2,125.7	2,002.5	5.3	12.8	-153.93	255.4	544.8	792.4	781.6	10.74	73.775	
2,500.0	2,492.8	2,205.7	2,072.1	5.6	13.7	-154.09	271.2	581.1	852.3	841.0	11.22	75.926	
2,600.0	2,591.9	2,285.8	2,141.7	5.9	14.5	-154.23	286.9	617.3	912.1	900.4	11.72	77.857	
2,700.0	2,690.9	2,365.9	2,211.3	6.2	15.4	-154.36	302.7	653.6	972.0	959.8	12.21	79.600	
2,800.0	2,789.9	2,445.9	2,280.9	6.5	16.2	-154.47	318.5	689.9	1,031.9	1,019.2	12.71	81.181	
2,900.0	2,888.9	2,526.0	2,350.5	6.8	17.0	-154.57	334.3	726.2	1,091.8	1,078.6	13.22	82.618	
3,000.0	2,988.0	2,606.1	2,420.1	7.1	17.9	-154.65	350.1	762.5	1,151.7	1,138.0	13.72	83.929	
3,100.0	3,087.0	2,686.2	2,489.7	7.4	18.7	-154.73	365.9	798.8	1,211.6	1,197.3	14.23	85.126	
3,200.0	3,186.0	2,766.2	2,559.3	7.8	19.6	-154.80	381.7	835.1	1,271.5	1,256.7	14.75	86.224	
3,300.0	3,285.0	2,846.3	2,628.9	8.1	20.4	-154.87	397.5	871.4	1,331.4	1,316.1	15.26	87.234	
3,400.0	3,384.1	2,926.4	2,698.5	8.4	21.3	-154.93	413.3	907.7	1,391.3	1,375.5	15.78	88.165	
3,500.0	3,483.1	3,006.4	2,768.1	8.7	22.1	-154.98	429.1	943.9	1,451.1	1,434.8	16.30	89.027	
3,600.0	3,582.1	3,086.5	2,837.7	9.1	23.0	-155.03	444.9	980.2	1,511.0	1,494.2	16.82	89.824	
3,700.0	3,681.1	3,166.6	2,907.3	9.4	23.8	-155.08	460.7	1,016.5	1,570.9	1,553.6	17.35	90.565	
3,800.0	3,780.2	3,246.7	2,976.9	9.7	24.7	-155.12	476.5	1,052.8	1,630.8	1,613.0	17.87	91.254	
3,900.0	3,879.2	3,326.7	3,046.5	10.1	25.5	-155.16	492.3	1,089.1	1,690.7	1,672.3	18.40	91.896	
4,000.0	3,978.2	3,406.8	3,116.2	10.4	26.4	-155.20	508.1	1,125.4	1,750.6	1,731.7	18.93	92.497	
4,100.0	4,077.2	3,486.9	3,185.8	10.7	27.2	-155.24	523.9	1,161.7	1,810.5	1,791.1	19.46	93.059	
4,200.0	4,176.3	3,566.9	3,255.4	11.1	28.1	-155.27	539.7	1,198.0	1,870.4	1,850.4	19.99	93.585	
4,300.0	4,275.3	3,647.0	3,325.0	11.4	28.9	-155.30	555.5	1,234.3	1,930.3	1,909.8	20.52	94.079	
4,400.0	4,374.3	3,727.1	3,394.6	11.8	29.8	-155.33	571.3	1,270.5	1,990.2	1,969.2	21.05	94.544	
4,500.0	4,473.3	3,807.2	3,464.2	12.1	30.6	-155.35	587.1	1,306.8	2,050.1	2,028.5	21.58	94.982	
4,600.0	4,572.4	3,887.2	3,533.8	12.4	31.5	-155.38	602.9	1,343.1	2,110.0	2,087.9	22.12	95.395	
4,628.8	4,600.9	3,910.3	3,553.8	12.5	31.7	-155.39	607.4	1,353.6	2,127.3	2,105.0	22.27	95.510	
4,700.0	4,671.5	3,967.8	3,603.8	12.8	32.3	-155.82	618.8	1,379.6	2,169.3	2,146.4	22.83	95.003	
4,800.0	4,771.0	4,050.1	3,675.4	13.0	33.2	-156.35	635.0	1,416.9	2,226.0	2,202.4	23.60	94.343	
4,900.0	4,870.8	4,134.2	3,748.4	13.2	34.1	-156.79	651.6	1,455.0	2,280.1	2,255.8	24.34	93.670	
5,000.0	4,970.8	4,219.9	3,822.9	13.4	35.0	-157.15	668.5	1,493.9	2,331.5	2,306.5	25.07	93.000	

CC - Min centre to center distance or convergent point, SF - min separation factor, ES - min ellipse separation

Company:	Mineral Resources Inc	Local Co-ordinate Reference:	Well BESTWAY 6-11
Project:	SEC.2-T5N-R66W	TVD Reference:	RKB @ 4716.0ft (KB RIG 14)
Reference Site:	BESTWAY HOR PAD 2-5N-66W	MD Reference:	RKB @ 4716.0ft (KB RIG 14)
Site Error:	0.0ft	North Reference:	True
Reference Well:	BESTWAY 6-11	Survey Calculation Method:	Minimum Curvature
Well Error:	0.0ft	Output errors are at	2.00 sigma
Reference Wellbore	Wellbore #1	Database:	Landmark
Reference Design:	PLAN 1 (FEB 9 2012)	Offset TVD Reference:	Offset Datum

BESTWAY HOR PAD 2-5N-66W - POUDRE TRAIL 5 2-2-1 - Wellbore #1 - PLAN 1 (FEB 9 2012)													Offset Site Error: 0.0 ft	
Offset Design				Survey Program: 0-MWD									Offset Well Error: 0.0 ft	
Reference		Offset		Semi Major Axis			Distance							
Measured Depth (ft)	Vertical Depth (ft)	Measured Depth (ft)	Vertical Depth (ft)	Reference (ft)	Offset (ft)	Highside Toolface (°)	Offset Wellbore Centre +N/-S (ft)	+E/-W (ft)	Between Centres (ft)	Between Ellipses (ft)	Minimum Separation (ft)	Separation Factor	Warning	
5,029.2	5,000.0	4,245.2	3,845.0	13.4	35.3	60.02	673.5	1,505.3	2,346.0	2,320.6	25.38	92.449		
5,100.0	5,070.8	4,306.7	3,898.5	13.5	35.9	60.12	685.7	1,533.2	2,380.8	2,355.1	25.73	92.516		
5,200.0	5,170.8	4,393.7	3,974.0	13.7	36.9	60.25	702.8	1,572.6	2,430.0	2,403.8	26.24	92.624		
5,300.0	5,270.8	4,480.6	4,049.6	13.8	37.8	60.37	720.0	1,612.0	2,479.3	2,452.5	26.74	92.725		
5,400.0	5,370.8	4,567.5	4,125.2	14.0	38.7	60.49	737.1	1,651.4	2,528.5	2,501.2	27.24	92.817		
5,500.0	5,470.8	4,654.4	4,200.7	14.2	39.6	60.61	754.3	1,690.8	2,577.7	2,550.0	27.75	92.903		
5,600.0	5,570.8	4,741.4	4,276.3	14.3	40.5	60.72	771.4	1,730.2	2,626.9	2,598.7	28.25	92.982		
5,700.0	5,670.8	4,828.3	4,351.9	14.5	41.5	60.82	788.6	1,769.6	2,676.2	2,647.4	28.76	93.055		
5,800.0	5,770.8	4,915.2	4,427.4	14.7	42.4	60.92	805.7	1,809.0	2,725.4	2,696.2	29.27	93.122		
5,900.0	5,870.8	5,002.2	4,503.0	14.8	43.3	61.02	822.9	1,848.4	2,774.7	2,744.9	29.78	93.184		
6,000.0	5,970.8	5,089.1	4,578.6	15.0	44.2	61.12	840.0	1,887.8	2,824.0	2,793.7	30.29	93.240		
6,100.0	6,070.8	5,176.0	4,654.1	15.2	45.2	61.21	857.2	1,927.2	2,873.2	2,842.4	30.80	93.292		
6,200.0	6,170.8	5,263.0	4,729.7	15.4	46.1	61.30	874.3	1,966.6	2,922.5	2,891.2	31.31	93.339		
6,300.0	6,270.8	5,349.9	4,805.3	15.5	47.0	61.38	891.5	2,006.0	2,971.8	2,939.9	31.82	93.383		
6,358.3	6,329.1	5,400.6	4,849.4	15.6	47.6	61.43	901.5	2,029.0	3,000.5	2,968.4	32.12	93.406		
6,400.0	6,370.7	5,436.4	4,880.5	15.7	47.9	-116.87	908.5	2,045.2	3,021.7	2,990.1	31.65	95.468		
6,450.0	6,420.3	5,500.1	4,935.9	15.9	48.6	-113.81	921.1	2,074.0	3,048.9	3,017.2	31.62	96.422		
6,500.0	6,469.0	5,704.6	5,117.0	16.0	50.3	-111.35	959.0	2,161.1	3,076.3	3,043.8	32.42	94.897		
6,550.0	6,516.5	5,913.3	5,306.8	16.2	51.8	-109.41	993.6	2,240.7	3,103.0	3,069.5	33.48	92.677		
6,600.0	6,562.2	6,124.4	5,503.2	16.5	53.1	-107.98	1,024.4	2,311.3	3,128.9	3,094.2	34.68	90.235		
6,650.0	6,605.8	6,335.5	5,703.7	16.8	54.3	-106.99	1,050.8	2,372.0	3,154.1	3,118.2	35.89	87.887		
6,700.0	6,646.8	6,544.2	5,905.1	17.1	55.2	-106.39	1,072.5	2,421.9	3,178.6	3,141.5	37.06	85.767		
6,750.0	6,684.9	6,747.6	6,104.1	17.5	56.0	-106.07	1,089.4	2,460.8	3,202.5	3,164.3	38.18	83.870		
6,800.0	6,719.7	6,943.1	6,297.1	17.9	56.5	-105.93	1,101.7	2,488.9	3,226.2	3,186.9	39.29	82.107		
6,850.0	6,751.0	7,127.4	6,480.3	18.3	56.9	-105.86	1,109.6	2,507.1	3,249.8	3,209.4	40.44	80.352		
6,900.0	6,778.3	7,297.7	6,650.3	18.8	57.1	-105.71	1,113.8	2,516.7	3,273.7	3,231.9	41.71	78.480		
6,950.0	6,801.5	7,448.0	6,800.5	19.4	57.2	-105.31	1,114.9	2,519.4	3,298.0	3,254.8	43.19	76.363		
7,000.0	6,820.4	7,466.8	6,819.4	20.0	57.3	-102.50	1,114.9	2,519.4	3,323.5	3,277.7	45.75	72.645		
7,050.0	6,834.7	7,481.2	6,833.7	20.6	57.3	-99.34	1,114.9	2,519.4	3,350.2	3,302.0	48.24	69.454		
7,100.0	6,844.4	7,490.8	6,843.4	21.2	57.3	-95.86	1,114.9	2,519.4	3,378.2	3,327.7	50.45	66.964		
7,150.0	6,849.3	7,495.8	6,848.3	21.9	57.3	-92.10	1,114.9	2,519.4	3,407.0	3,354.8	52.19	65.283		
7,176.5	6,850.0	7,496.5	6,849.0	22.3	57.3	-90.00	1,114.9	2,519.4	3,422.5	3,369.7	52.87	64.739		
7,200.0	6,850.0	7,496.5	6,849.0	22.6	57.3	-90.00	1,114.9	2,519.4	3,436.4	3,383.2	53.20	64.591		
7,300.0	6,850.0	7,496.5	6,849.0	24.1	57.3	-90.00	1,114.9	2,519.4	3,496.7	3,442.0	54.68	63.950		
7,400.0	6,850.0	7,496.5	6,849.0	25.6	57.3	-90.00	1,114.9	2,519.4	3,558.8	3,502.6	56.21	63.308		
7,500.0	6,850.0	7,496.5	6,849.0	27.1	57.3	-90.00	1,114.9	2,519.4	3,622.6	3,564.8	57.80	62.675		
7,600.0	6,850.0	7,496.5	6,849.0	28.7	57.3	-90.00	1,114.9	2,519.4	3,688.0	3,628.5	59.43	62.060		
7,700.0	6,850.0	7,496.5	6,849.0	30.4	57.3	-90.00	1,114.9	2,519.4	3,754.9	3,693.8	61.09	61.468		
7,800.0	6,850.0	7,496.5	6,849.0	32.1	57.3	-90.00	1,114.9	2,519.4	3,823.2	3,760.4	62.78	60.902		
7,900.0	6,850.0	7,496.5	6,849.0	33.7	57.3	-90.00	1,114.9	2,519.4	3,892.9	3,828.5	64.49	60.364		
8,000.0	6,850.0	7,496.5	6,849.0	35.5	57.3	-90.00	1,114.9	2,519.4	3,964.0	3,897.7	66.23	59.854		
8,100.0	6,850.0	7,496.5	6,849.0	37.2	57.3	-90.00	1,114.9	2,519.4	4,036.2	3,968.2	67.98	59.373		
8,200.0	6,850.0	7,496.5	6,849.0	39.0	57.3	-90.00	1,114.9	2,519.4	4,109.6	4,039.9	69.75	58.919		
8,300.0	6,850.0	7,496.5	6,849.0	40.7	57.3	-90.00	1,114.9	2,519.4	4,184.1	4,112.6	71.53	58.492		
8,400.0	6,850.0	7,496.5	6,849.0	42.5	57.3	-90.00	1,114.9	2,519.4	4,259.7	4,186.4	73.33	58.091		
8,500.0	6,850.0	7,496.5	6,849.0	44.3	57.3	-90.00	1,114.9	2,519.4	4,336.2	4,261.1	75.13	57.713		
8,600.0	6,850.0	7,496.5	6,849.0	46.1	57.3	-90.00	1,114.9	2,519.4	4,413.7	4,336.8	76.95	57.359		
8,700.0	6,850.0	7,496.5	6,849.0	47.9	57.3	-90.00	1,114.9	2,519.4	4,492.1	4,413.3	78.77	57.027		
8,800.0	6,850.0	5,418.6	4,865.0	49.8	47.7	-49.04	905.0	2,037.1	4,570.1	4,508.6	61.53	74.277		
8,900.0	6,850.0	5,398.3	4,847.4	51.6	47.5	-48.68	901.0	2,027.9	4,645.5	4,582.9	62.63	74.175		
9,000.0	6,850.0	5,378.0	4,829.7	53.4	47.3	-48.31	897.0	2,018.7	4,721.7	4,658.0	63.72	74.099		
9,100.0	6,850.0	5,357.7	4,812.1	55.3	47.1	-47.95	893.0	2,009.6	4,798.7	4,733.9	64.80	74.048		

Company:	Mineral Resources Inc	Local Co-ordinate Reference:	Well BESTWAY 6-11
Project:	SEC.2-T5N-R66W	TVD Reference:	RKB @ 4716.0ft (KB RIG 14)
Reference Site:	BESTWAY HOR PAD 2-5N-66W	MD Reference:	RKB @ 4716.0ft (KB RIG 14)
Site Error:	0.0ft	North Reference:	True
Reference Well:	BESTWAY 6-11	Survey Calculation Method:	Minimum Curvature
Well Error:	0.0ft	Output errors are at	2.00 sigma
Reference Wellbore	Wellbore #1	Database:	Landmark
Reference Design:	PLAN 1 (FEB 9 2012)	Offset TVD Reference:	Offset Datum

Offset Design BESTWAY HOR PAD 2-5N-66W - POUDRE TRAIL 5 2-2-1 - Wellbore #1 - PLAN 1 (FEB 9 2012)												Offset Site Error:	0.0 ft
Survey Program: 0-MWD												Offset Well Error:	0.0 ft
Reference		Offset		Semi Major Axis			Distance						
Measured Depth (ft)	Vertical Depth (ft)	Measured Depth (ft)	Vertical Depth (ft)	Reference (ft)	Offset (ft)	Highside Toolface (°)	Offset Wellbore Centre +N/-S (ft)	+E/-W (ft)	Between Centres (ft)	Between Ellipses (ft)	Minimum Separation (ft)	Separation Factor	Warning
9,200.0	6,850.0	5,337.4	4,794.5	57.1	46.9	-47.59	889.0	2,000.4	4,876.4	4,810.5	65.88	74.020	
9,300.0	6,850.0	5,317.2	4,776.8	59.0	46.7	-47.23	885.0	1,991.2	4,954.8	4,887.9	66.94	74.014	
9,400.0	6,850.0	5,296.9	4,759.2	60.8	46.5	-46.87	881.0	1,982.0	5,033.9	4,965.9	68.00	74.029	
9,500.0	6,850.0	5,276.6	4,741.6	62.7	46.2	-46.51	877.0	1,972.8	5,113.7	5,044.7	69.04	74.064	
9,600.0	6,850.0	5,256.3	4,724.0	64.5	46.0	-46.16	873.0	1,963.6	5,194.1	5,124.0	70.08	74.117	
9,700.0	6,850.0	5,236.1	4,706.3	66.4	45.8	-45.80	869.0	1,954.4	5,275.1	5,204.0	71.10	74.188	
9,800.0	6,850.0	5,215.8	4,688.7	68.3	45.6	-45.45	865.0	1,945.2	5,356.6	5,284.5	72.12	74.276	
9,900.0	6,850.0	5,195.5	4,671.1	70.1	45.4	-45.10	861.0	1,936.0	5,438.7	5,365.6	73.12	74.380	
10,000.0	6,850.0	5,175.2	4,653.4	72.0	45.2	-44.74	857.0	1,926.8	5,521.3	5,447.2	74.11	74.499	
10,100.0	6,850.0	5,154.9	4,635.8	73.9	44.9	-44.39	853.0	1,917.6	5,604.4	5,529.4	75.09	74.633	
10,200.0	6,850.0	5,134.7	4,618.2	75.8	44.7	-44.05	849.0	1,908.5	5,688.0	5,612.0	76.06	74.781	
10,300.0	6,850.0	5,114.4	4,600.6	77.6	44.5	-43.70	845.0	1,899.3	5,772.0	5,695.0	77.02	74.942	
10,400.0	6,850.0	5,094.1	4,582.9	79.5	44.3	-43.35	841.0	1,890.1	5,856.5	5,778.5	77.97	75.115	
10,500.0	6,850.0	5,073.8	4,565.3	81.4	44.1	-43.01	837.0	1,880.9	5,941.4	5,862.5	78.90	75.300	
10,600.0	6,850.0	5,053.6	4,547.7	83.3	43.9	-42.67	833.0	1,871.7	6,026.6	5,946.8	79.83	75.497	
10,700.0	6,850.0	5,033.3	4,530.0	85.2	43.7	-42.33	829.0	1,862.5	6,112.3	6,031.5	80.74	75.705	
10,800.0	6,850.0	5,013.0	4,512.4	87.1	43.4	-41.99	825.0	1,853.3	6,198.3	6,116.6	81.64	75.923	
10,900.0	6,850.0	4,992.7	4,494.8	89.0	43.2	-41.65	821.0	1,844.1	6,284.6	6,202.1	82.53	76.151	
11,000.0	6,850.0	4,972.4	4,477.2	90.9	43.0	-41.31	817.0	1,834.9	6,371.3	6,287.9	83.41	76.389	
11,100.0	6,850.0	4,952.2	4,459.5	92.7	42.8	-40.98	813.0	1,825.7	6,458.3	6,374.1	84.27	76.636	
11,200.0	6,850.0	4,931.9	4,441.9	94.6	42.6	-40.64	809.0	1,816.6	6,545.7	6,460.5	85.13	76.891	
11,300.0	6,850.0	4,911.6	4,424.3	96.5	42.4	-40.31	805.0	1,807.4	6,633.3	6,547.3	85.97	77.156	
11,400.0	6,850.0	4,891.3	4,406.7	98.4	42.1	-39.98	801.0	1,798.2	6,721.2	6,634.4	86.81	77.428	
11,500.0	6,850.0	4,871.0	4,389.0	100.3	41.9	-39.65	797.0	1,789.0	6,809.4	6,721.7	87.63	77.708	
11,600.0	6,850.0	4,850.8	4,371.4	102.2	41.7	-39.33	793.0	1,779.8	6,897.8	6,809.4	88.44	77.996	
11,700.0	6,850.0	4,830.5	4,353.8	104.1	41.5	-39.00	789.0	1,770.6	6,986.5	6,897.2	89.24	78.291	
11,737.3	6,850.0	4,822.9	4,347.2	104.8	41.4	-38.88	787.5	1,767.2	7,019.6	6,930.1	89.53	78.403	

Company:	Mineral Resources Inc	Local Co-ordinate Reference:	Well BESTWAY 6-11
Project:	SEC.2-T5N-R66W	TVD Reference:	RKB @ 4716.0ft (KB RIG 14)
Reference Site:	BESTWAY HOR PAD 2-5N-66W	MD Reference:	RKB @ 4716.0ft (KB RIG 14)
Site Error:	0.0ft	North Reference:	True
Reference Well:	BESTWAY 6-11	Survey Calculation Method:	Minimum Curvature
Well Error:	0.0ft	Output errors are at	2.00 sigma
Reference Wellbore	Wellbore #1	Database:	Landmark
Reference Design:	PLAN 1 (FEB 9 2012)	Offset TVD Reference:	Offset Datum

Reference Depths are relative to RKB @ 4716.0ft (KB RIG 14)
Offset Depths are relative to Offset Datum
Central Meridian is -105.500000 °

Coordinates are relative to: BESTWAY 6-11
Coordinate System is US State Plane 1983, Colorado Northern Zone
Grid Convergence at Surface is: 0.49°



Company:	Mineral Resources Inc	Local Co-ordinate Reference:	Well BESTWAY 6-11
Project:	SEC.2-T5N-R66W	TVD Reference:	RKB @ 4716.0ft (KB RIG 14)
Reference Site:	BESTWAY HOR PAD 2-5N-66W	MD Reference:	RKB @ 4716.0ft (KB RIG 14)
Site Error:	0.0ft	North Reference:	True
Reference Well:	BESTWAY 6-11	Survey Calculation Method:	Minimum Curvature
Well Error:	0.0ft	Output errors are at	2.00 sigma
Reference Wellbore	Wellbore #1	Database:	Landmark
Reference Design:	PLAN 1 (FEB 9 2012)	Offset TVD Reference:	Offset Datum

Reference Depths are relative to RKB @ 4716.0ft (KB RIG 14)
Offset Depths are relative to Offset Datum
Central Meridian is -105.500000 °

Coordinates are relative to: BESTWAY 6-11
Coordinate System is US State Plane 1983, Colorado Northern Zone
Grid Convergence at Surface is: 0.49°

