

LAND SURVEYOR'S CERTIFICATION

LAMP, RYNEARSON & ASSOCIATES, INC., OF FT. COLLINS, COLORADO HAS IN ACCORDANCE WITH A REQUEST FROM COLLIN RICHARDSON FOR MINERAL RESOURCES, INC., DETERMINED THE SURFACE LOCATION OF THE WELL DESIGNATED AS BESTWAY 6-11 TO BE 2433' FROM THE NORTH LINE AND 1179' FROM THE EAST LINE OF SECTION 2, TOWNSHIP 5 NORTH, RANGE 66 WEST OF THE 6TH P.M., WELD COUNTY, COLORADO.

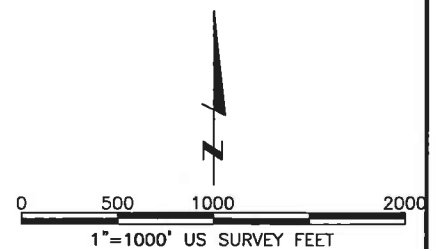
DAVID JOHN BERGLUND
 COLORADO PLS 38199

DATE OF SURVEY: 8/19/2010 (SECTION CONTROL)
 DATE OF SURVEY: 5/18/2011 (WELL LOCATION)



LEGEND

- ALIQUOT CORNER
- ⊙ BOTTOM HOLE
- △ COMPUTED ALIQUOT FROM MONUMENT ACCESSORIES
- ⊙ PROPOSED WELL
- A.C. ALUMINUM CAP
- R.B. RANGE BOX



**LAMP RYNEARSON
 & ASSOCIATES**

4715 Innovation Drive 970.226.0342 | P
 Fort Collins, CO 80525 970.226.0879 | F
 www.LRA-Inc.com

Proposed Well Location Exhibit
 Bestway 6-11
 1 of 2

drawn by
 KJW

date
 2/10/12

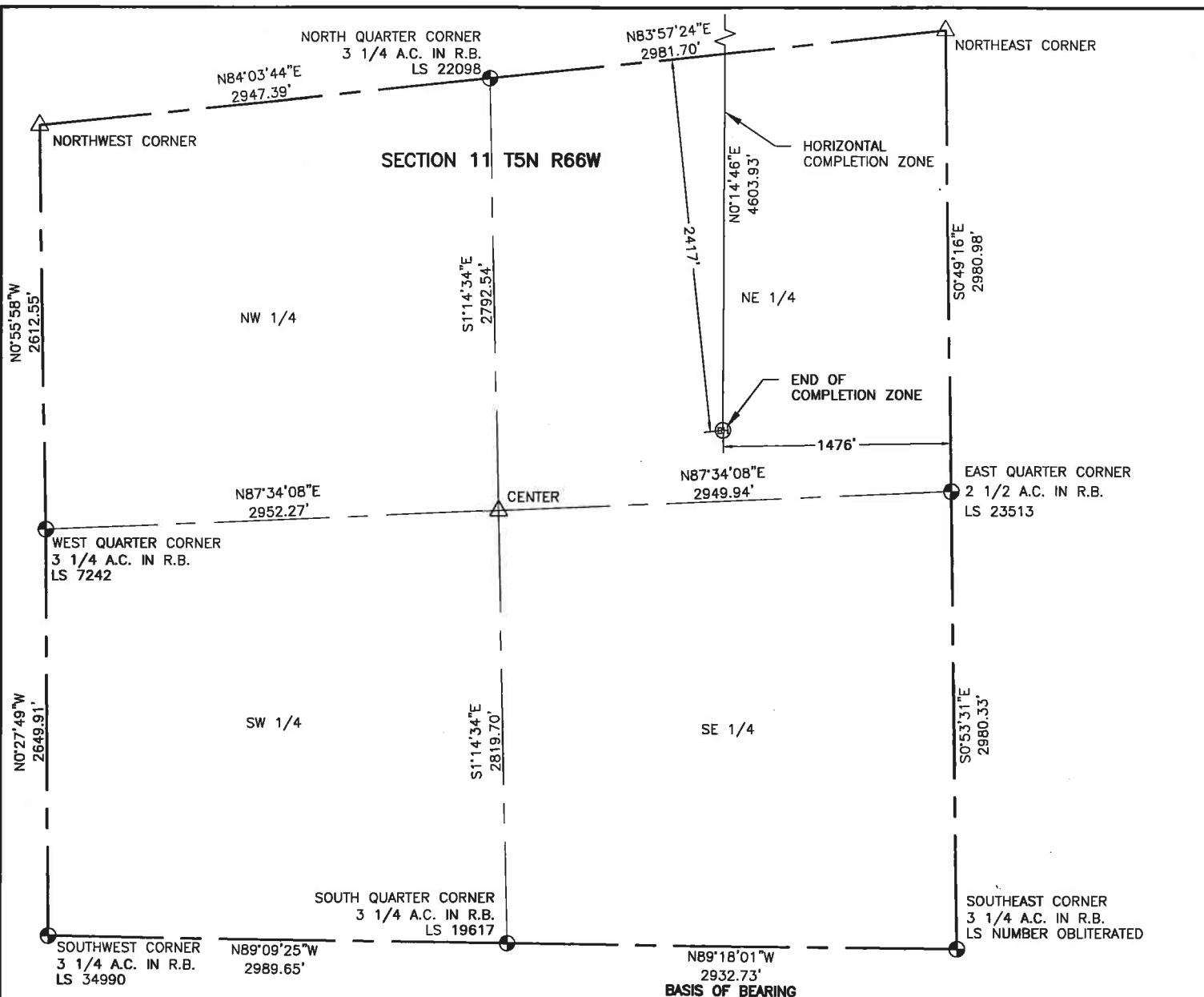
cogcc id

project - task number
 0210013.00

book and page
 MR-01 5-6

surface - location
 SE/4, NE/4, SEC 2 T5N R66W

path\filename P:_Engineering\0210013 MRI Bestway\DRAWINGS\EXHIBITS\0210013EXWPJ.dwg



NOTES:

DISTANCES ARE MEASURED PERPENDICULAR TO NEAREST SECTION LINE AND ARE SHOWN ON THE SAME SIDE OF THE SECTION LINE WHERE THE WELL IS LOCATED.

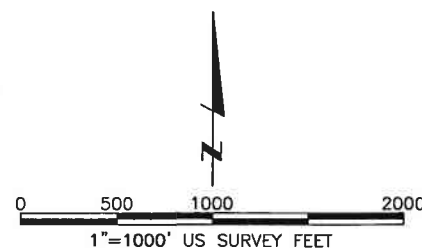
BASIS OF BEARING:

THE SOUTH LINE OF THE SOUTHEAST QUARTER OF SECTION 11-T5N-R66W BEARS N89°18'01"W BETWEEN THE SOUTHEAST CORNER OF SECTION 11 MONUMENTED WITH A 3 1/4" A.C. IN R.B. LS NUMBER OBLITERATED AND THE SOUTH QUARTER CORNER OF SECTION 11 MONUMENTED WITH A 3 1/4" A.C. IN R.B. STAMPED "LS 19617" BASED ON THE COLORADO NORTH 0501 COORDINATE SYSTEM.

ELEVATIONS ARE NAVD 88, USING THE CONUS GEOID 03 AS OBSERVED FROM GPS OBSERVATIONS

LEGEND

- ALIQUOT CORNER
- ⊙ BOTTOM HOLE
- △ COMPUTED ALIQUOT FROM MONUMENT ACCESSORIES
- ⊙ PROPOSED WELL
- A.C. ALUMINUM CAP
- R.B. RANGE BOX



**LAMP RYNEARSON
& ASSOCIATES**

4715 Innovation Drive 970.226.0342 | P
Fort Collins, CO 80525 970.226.0879 | F
www.LRA-Inc.com

Proposed Well Location Exhibit
Bestway 6-11
2 of 2

drawn by
KJW

date
2/10/12

cogcc id

project - task number
0210013.00

book and page
MR-01 5-6

path\filename P:\Engineering\0210013 MRI Bestway\DRAWINGS\EXHIBITS\0210013EXWPJA.dwg

surface - location
SE/4, NE/4, SEC 2 T5N R66W