

Steil Surveying Services, LLC

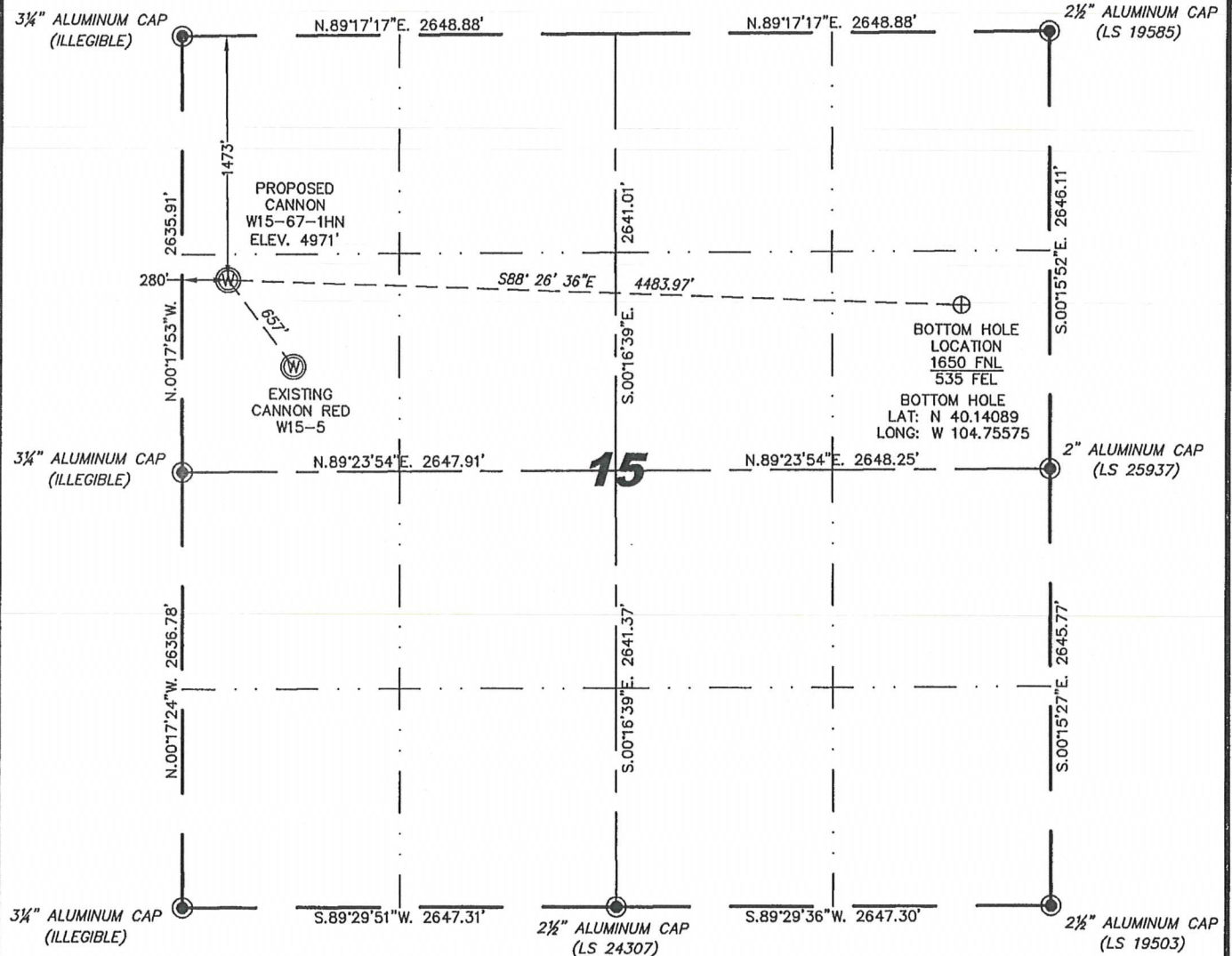
1102 West 19th Street P.O. BOX 2073

Cheyenne, Wyoming 82001

### WELL LOCATION CERTIFICATE

THIS MAP DOES NOT REPRESENT A BOUNDARY SURVEY

SECTION 15  
TOWNSHIP 2 NORTH  
RANGE 66 WEST



0 1000

Scale: 1" = 1000'

IN ACCORDANCE WITH A REQUEST FROM SCOTT LEWIS - NOBLE ENERGY INC, STEIL SURVEYING SERVICES, LLC HAS DETERMINED THE LOCATION OF THE CANNON W15-67-1HN WELL TO BE 1473' FNL, 280' FWL, AS MEASURED AT NINETY (90) DEGREES FROM THE SECTION LINES, SECTION 15, TOWNSHIP 2 NORTH, RANGE 66 WEST, 6TH PRINCIPLE MERIDIAN, WELD COUNTY, COLORADO.

I HEREBY CERTIFY THAT THIS WELL LOCATION CERTIFICATE WAS PREPARED BY ME, OR UNDER MY DIRECT SUPERVISION, THAT THE FIELD WORK WAS COMPLETED ON 08/09/2011, FOR AND ON BEHALF OF NOBLE ENERGY INC, THAT IT IS NOT A LAND SURVEY PLAT OR AN IMPROVEMENT SURVEY PLAT, AND THAT IT IS NOT TO BE RELIED UPON FOR ESTABLISHMENT OF FENCE, BUILDING, OR OTHER FUTURE IMPROVEMENT LINES.

**NOTES:**

- 1) BASIS OF BEARINGS FOR THIS MAP ARE BASED UPON GPS OBSERVATIONS MADE ON 01/07/2008 BETWEEN MONUMENTS LOCATED AT THE SOUTHEAST SECTION CORNER AND THE NORTHEAST SECTION CORNER OF SAID SECTION AND WITH ALL BEARINGS SHOWN HEREON RELATIVE THERETO.
- 2) COORDINATES SHOWN ARE COLORADO STATE PLANE (NORTH ZONE) NAD 83
- 3) ELEVATIONS ARE BASED UPON NGS OPUS SOLUTION NAVD 88 DATUM.
- 4) THE NEAREST EXISTING WELL IS: CANNON RED W15-5, 657' SOUTHEAST.
- 5) SEE LOCATION DRAWING FOR ALL IMPROVEMENTS WITHIN VISIBLE IMPROVEMENT LIMIT.
- 6) THE LOCATION FALLS IN PASTURE LAND.

LATITUDE & LONGITUDE (NAD 83 SURFACE HOLE):  
 LATITUDE: N 40.14134°  
 LONGITUDE: W 104.77178°  
 PDOP: 2.0  
 QUARTER-QUARTER: SW/4NW/4  
 NEAREST PROPERTY LINE: 280' TO THE WEST

**LEGEND**

- FOUND SURVEY MONUMENT PER MONUMENT RECORD - EXCEPTIONS NOTED.
- (C) CALCULATED DIMENSION



Completed 08/11/2011

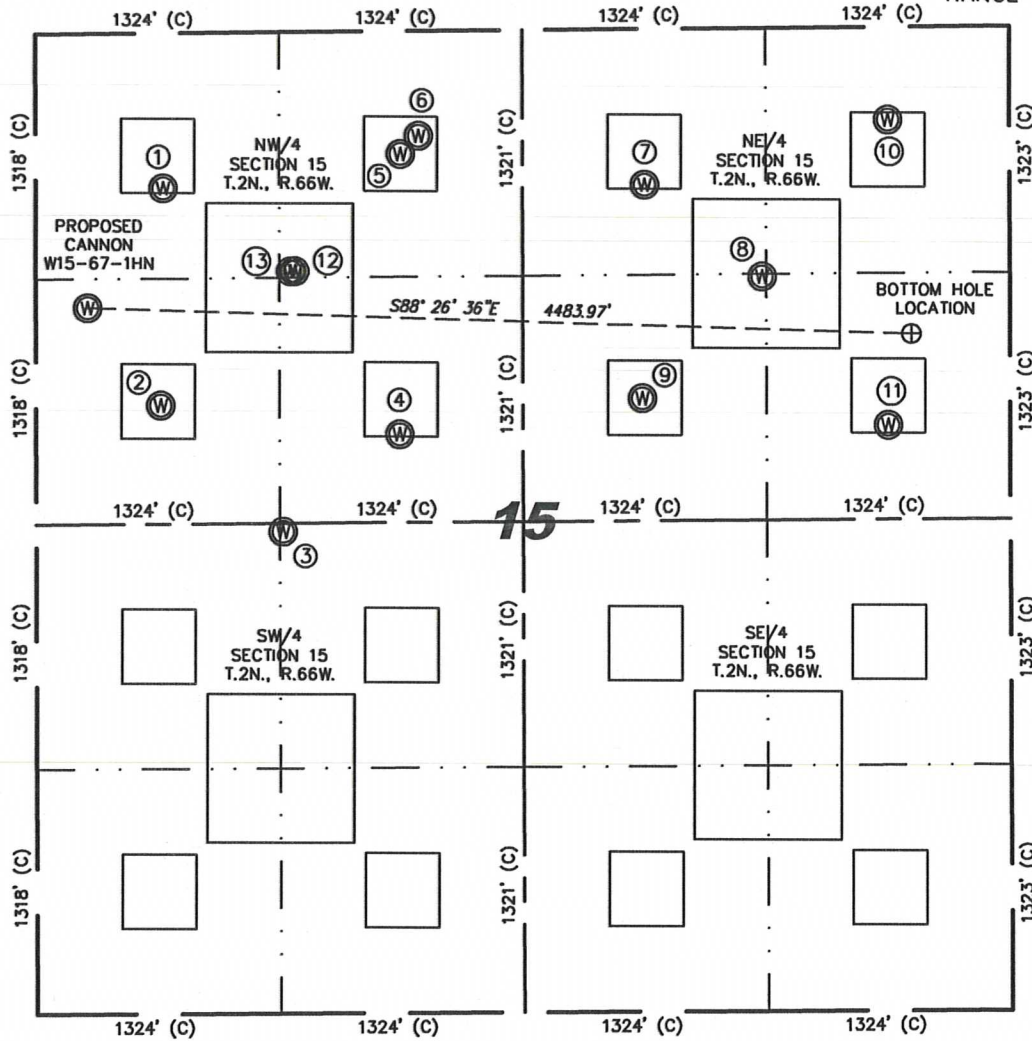
David C. Holmes  
 Professional Land Surveyor Registration No. 32828  
 State of Colorado

JOB #: 11086

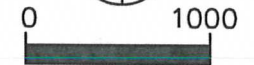
NOTICE: According to Colorado law you MUST commence any legal action based upon any defect in this W.L.C. within three years after you first discover such defect. In no event may any action based upon any defect in this W.L.C. be commenced more than ten years from this sold date of the certification shown hereon.

# SITE SKETCH – CANNON W15-67-1HN

SECTION 15  
TOWNSHIP 2 NORTH  
RANGE 66 WEST



①	②	③	④	⑤	⑥	⑦
CANNON RED W15-4 NW/NW SEC. 15 832' FNL 692' FWL EL 4982' N 40.14310 W 104.77030 PDOP 2.0	CANNON RED W15-5 SW/NW SEC. 15 1999' FNL 677' FWL EL 4982' N 40.13989 W 104.77036 PDOP 3.3	CANNON W15-20 NE/SW SEC. 15 2594' FSL 1341' FWL EL 4994' N 40.13802 W 104.76800 PDOP 4.0	CANNON LAND 6-15 A SE/NW SEC. 15 2166' FNL 1979' FWL EL 5004' N 40.13945 W 104.76571 PDOP 3.6	CANNON RED W15-3 NE/NW SEC. 15 660' FNL 1985' FWL EL 4986' N 40.14359 W 104.76567 PDOP 2.3	HSR-CANNON 3-15 NE/NW SEC. 15 563' FNL 2084' FWL EL 4984' N 40.14385 W 104.76532 PDOP 2.3	CANNON 15-31 NW/NE SEC. 15 838' FNL 1985' FEL EL 5010' N 40.14311 W 104.76093 PDOP 2.4
⑧	⑨	⑩	⑪	⑫	⑬	
JONES USX W15-1 SW/NE SEC. 15 1336' FNL 1346' FEL EL 5022' N 40.14175 W 104.75865 PDOP 2.5	CANNON USX WW32-15 SW/NE SEC. 15 1984' FNL 1999' FEL EL 5021' N 40.13997 W 104.76099 PDOP 2.6	CANNON USX W15-1 NE/NE SEC. 15 500' FNL 660' FEL EL 5015' N 40.14406 W 104.75618 PDOP 2.5	CANNON USX W15-8 SE/NE SEC. 15 2139' FNL 661' FEL EL 5046' N 40.13955 W 104.75621 PDOP 2.6	CANNON W15-18D NE/NW SEC. 15 1285' FNL 1409' FWL EL 4989' N 40.14186 W 104.76774 PDOP 2.1	CANNON W15-19 NE/NW SEC. 15 1285' FNL 1385' FWL EL 4989' N 40.14186 W 104.76783 PDOP 2.1	



NOTES:  
 1) THIS SKETCH DOES NOT REPRESENT A BOUNDARY SURVEY.  
 2) THE DATUM FOR THE LATITUDES AND LONGITUDES ON THIS SKETCH IS NAD83.