

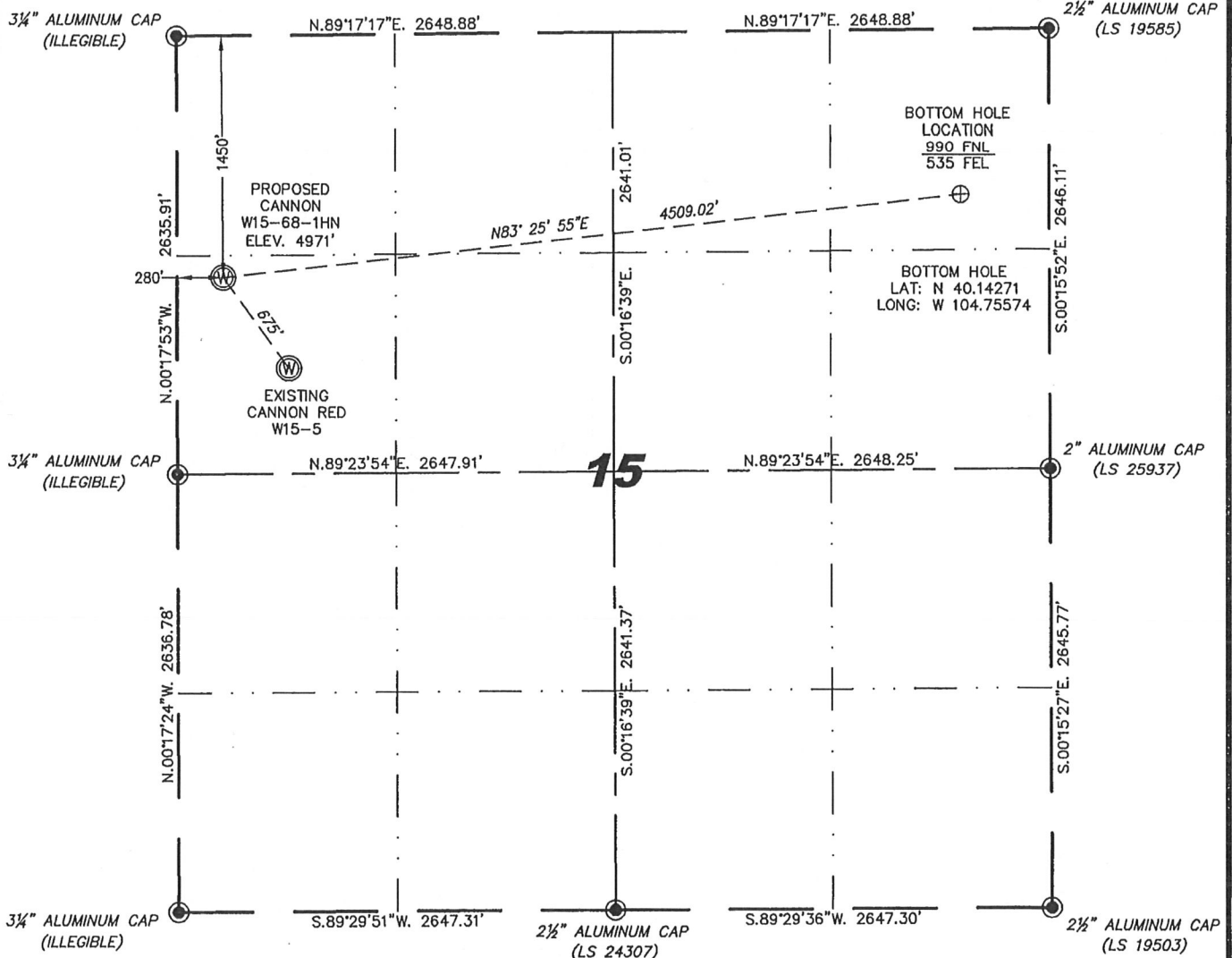
Steil Surveying Services, LLC

1102 West 19th Street P.O. BOX 2073

Cheyenne, Wyoming 82001

WELL LOCATION CERTIFICATE
THIS MAP DOES NOT REPRESENT A BOUNDARY SURVEY

SECTION 15
TOWNSHIP 2 NORTH
RANGE 66 WEST



0 1000

Scale: 1" = 1000'

IN ACCORDANCE WITH A REQUEST FROM SCOTT LEWS - NOBLE ENERGY INC, STEIL SURVEYING SERVICES, LLC HAS DETERMINED THE LOCATION OF THE CANNON W15-68-1HN WELL TO BE 1450' FNL, 280' FWL, AS MEASURED AT NINETY (90) DEGREES FROM THE SECTION LINES, SECTION 15, TOWNSHIP 2 NORTH, RANGE 66 WEST, 6TH PRINCIPLE MERIDIAN, WELD COUNTY, COLORADO.

I HEREBY CERTIFY THAT THIS WELL LOCATION CERTIFICATE WAS PREPARED BY ME, OR UNDER MY DIRECT SUPERVISION, THAT THE FIELD WORK WAS COMPLETED ON 08/09/2011, FOR AND ON BEHALF OF NOBLE ENERGY INC, THAT IT IS NOT A LAND SURVEY PLAT OR AN IMPROVEMENT SURVEY PLAT, AND THAT IT IS NOT TO BE RELIED UPON FOR ESTABLISHMENT OF FENCE, BUILDING, OR OTHER FUTURE IMPROVEMENT LINES.

NOTES:

- 1) BASIS OF BEARINGS FOR THIS MAP ARE BASED UPON GPS OBSERVATIONS MADE ON 01/07/2008 BETWEEN MONUMENTS LOCATED AT THE SOUTHEAST SECTION CORNER AND THE NORTHEAST SECTION CORNER OF SAID SECTION AND WITH ALL BEARINGS SHOWN HEREON RELATIVE THERETO.
- 2) COORDINATES SHOWN ARE COLORADO STATE PLANE (NORTH ZONE) NAD 83
- 3) ELEVATIONS ARE BASED UPON NGS OPUS SOLUTION NAVD 88 DATUM.
- 4) THE NEAREST EXISTING WELL IS: CANNON RED W15-5, 675' SOUTHEAST.
- 5) SEE LOCATION DRAWING FOR ALL IMPROVEMENTS WITHIN VISIBLE IMPROVEMENT LIMIT.
- 6) THE LOCATION FALLS IN PASTURE LAND.

LATITUDE & LONGITUDE (NAD 83 SURFACE HOLD):

LATITUDE: N 40.14140°

LONGITUDE: W 104.77178°

PDOP: 1.9

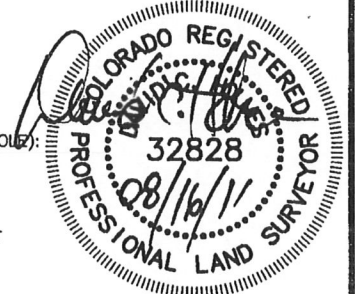
QUARTER-QUARTER: SW/4NW/4

NEAREST PROPERTY LINE: 280' TO THE WEST

LEGEND

● FOUND SURVEY MONUMENT PER
MONUMENT RECORD - EXCEPTIONS NOTED.

(C) CALCULATED DIMENSION



Completed 08/11/2011

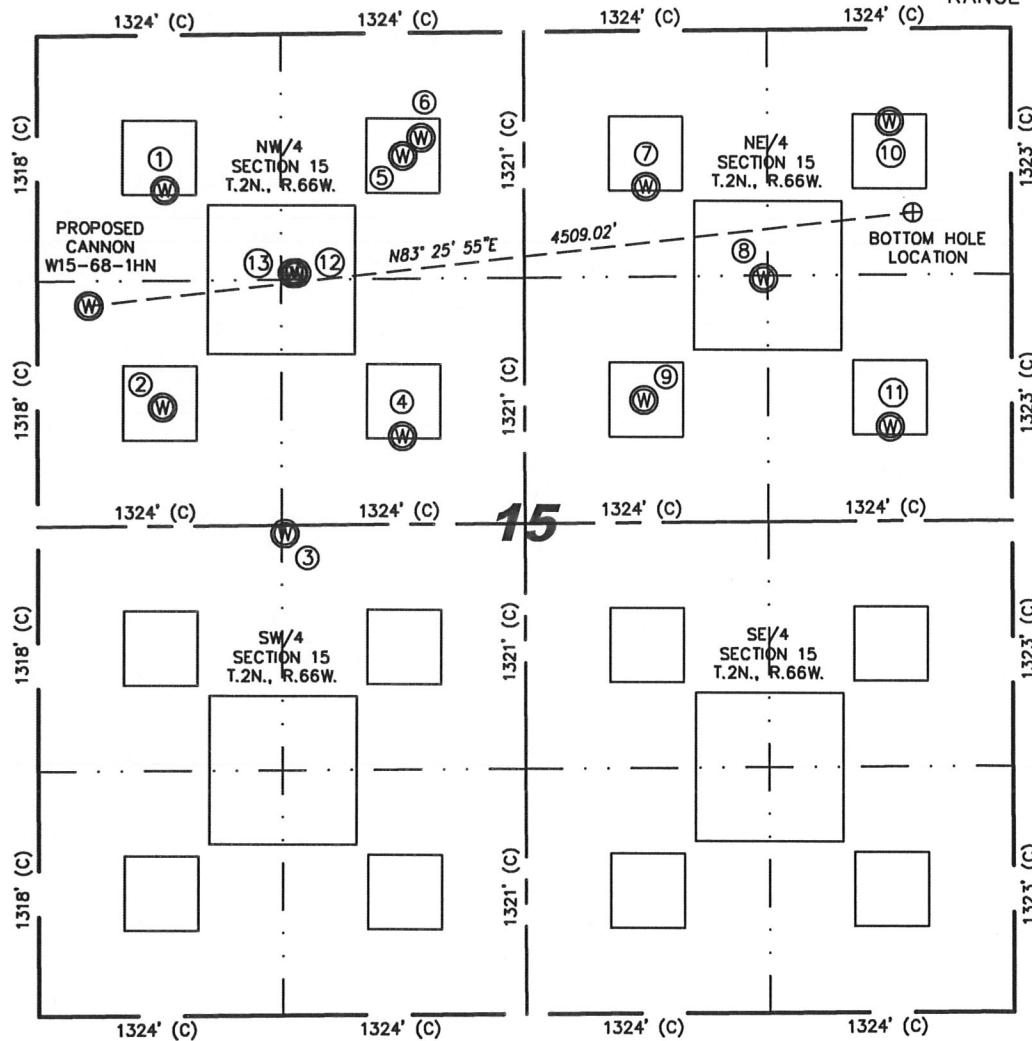
David C. Holmes
Professional Land Surveyor Registration No. 32828
State of Colorado

JOB #: 11086

NOTICE: According to Colorado law you MUST commence any legal action based upon any defect in this W.L.C. within three years after you first discover such defect. In no event may any action based upon any defect in this W.L.C. be commenced more than ten years from this said date of the certification shown hereon.

SITE SKETCH - CANNON W15-68-1HN

SECTION 15
TOWNSHIP 2 NORTH
RANGE 66 WEST



①
CANNON RED
W15-4
NW/NW SEC. 15
832' FNL
692' FWL
EL 4982'
N 40.14310
W 104.77030
PDOP 2.0

②
CANNON RED
W15-5
SW/NW SEC. 15
1999' FNL
677' FWL
EL 4982'
N 40.13989
W 104.77036
PDOP 3.3

③
CANNON
W15-20
NE/SW SEC. 15
2594' FSL
1341' FWL
EL 4994'
N 40.13802
W 104.76800
PDOP 4.0

④
CANNON LAND
6-15 A
SE/NW SEC. 15
2166' FNL
1979' FWL
EL 5004'
N 40.13945
W 104.76571
PDOP 3.6

⑤
CANNON RED
W15-3
NE/NW SEC. 15
660' FNL
1985' FWL
EL 4986'
N 40.14359
W 104.76567
PDOP 2.3

⑥
HSR-CANNON
3-15
NE/NW SEC. 15
563' FNL
2084' FWL
EL 4984'
N 40.14385
W 104.76532
PDOP 2.3

⑦
CANNON 15-31
NW/NE SEC. 15
838' FNL
1985' FEL
EL 5010'
N 40.14311
W 104.76093
PDOP 2.4

⑧
JONES USX
W15-1
SW/NE SEC. 15
1336' FNL
1346' FEL
EL 5022'
N 40.14175
W 104.75865
PDOP 2.5

⑨
CANNON USX
WW32-15
SW/NE SEC. 15
1984' FNL
1999' FEL
EL 5021'
N 40.13997
W 104.76099
PDOP 2.6

⑩
CANNON USX
W15-1
NE/NE SEC. 15
500' FNL
660' FEL
EL 5015'
N 40.14406
W 104.75618
PDOP 2.5

⑪
CANNON USX
W15-8
SE/NE SEC. 15
2139' FNL
661' FEL
EL 5046'
N 40.13955
W 104.75621
PDOP 2.6

⑫
CANNON
W15-18D
NE/NW SEC. 15
1285' FNL
1409' FWL
EL 4989'
N 40.14186
W 104.76774
PDOP 2.1

⑬
CANNON
W15-19
NE/NW SEC. 15
1285' FNL
1385' FWL
EL 4989'
N 40.14186
W 104.76783
PDOP 2.1



0 1000

Scale: 1" = 1000'

NOTES:

- 1) THIS SKETCH DOES NOT REPRESENT A BOUNDARY SURVEY.
- 2) THE DATUM FOR THE LATITUDES AND LONGITUDES ON THIS SKETCH IS NAD83.