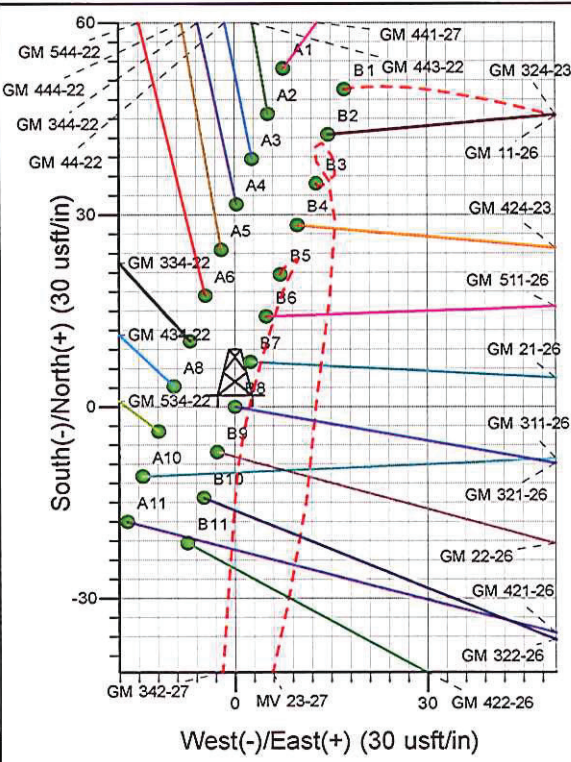
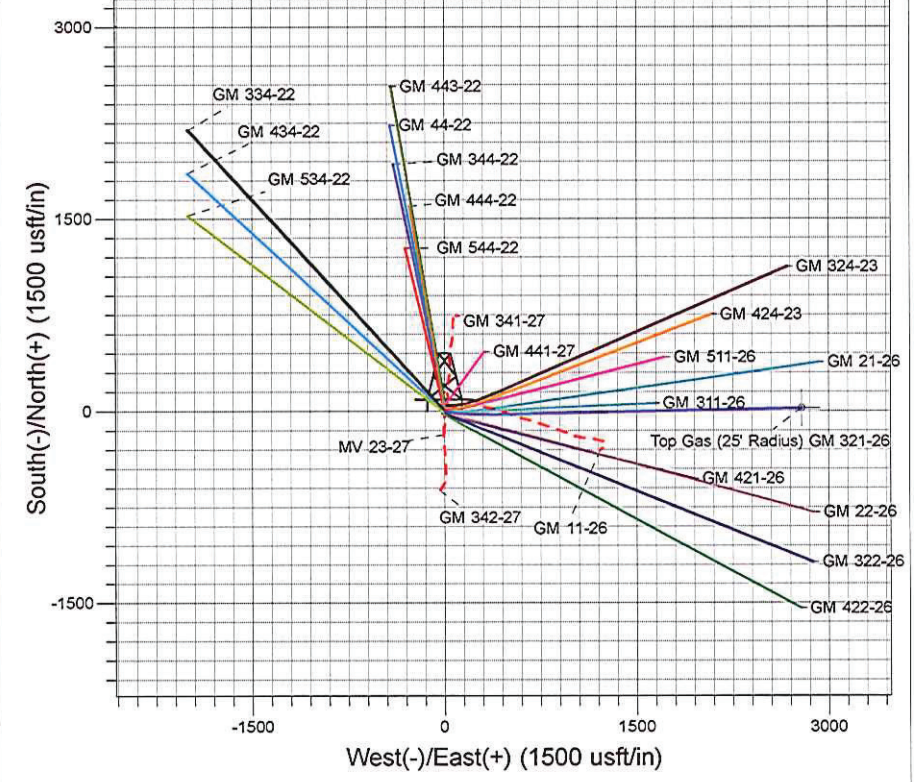
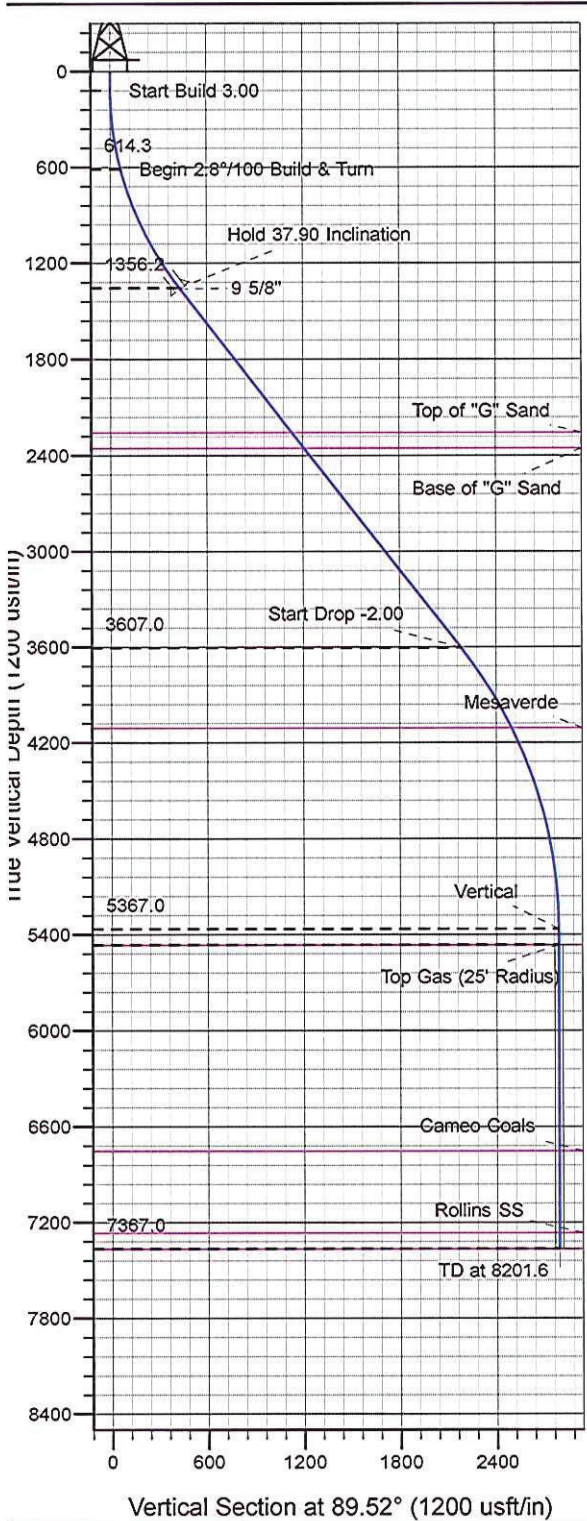




Surface Location: MV 23-27 Pad
North American Datum 1983 , US State Plane 1983 , Colorado Central Zone
Ground Elevation: 5770.0

+N/-S	+E/-W	Northing	Easting	Latitude	Longitude	Slot
0.0	0.0	1617296.00	2269885.20	39° 29' 58.943 N	108° 5' 15.743 W	B8

KELLY BUSHING @ 5794.0usft (H&P 280 (24' RKB) kjs)



Project: GV 27-06S-096W
Site: MV 23-27 Pad
Well: GM 321-26
Plan #2 27Sep10 kjs

Azimuths to True North
Magnetic North: 10.54°

Magnetic Field
Strength: 52357.7snT
Dip Angle: 65.76°
Date: 4/21/2010
Model: IGRF2010

ANNOTATIONS									
TVD	MD	Inc	Azi	+N/-S	+E/-W	VSec	Departure	Annotation	
120.0	120.0	0.00	0.00	0.0	0.0	0.0	0.0	Start Build 3.00	
614.3	620.0	15.00	100.00	-11.3	64.1	64.0	65.1	Begin 2.8°/100 Build & Turn	
1356.2	1453.7	37.90	88.83	-25.0	431.5	431.3	433.2	Hold 37.90 Inclination	
3607.0	4306.4	37.90	88.83	10.8	2183.6	2183.7	2185.7	Start Drop -2.00	
5367.0	6201.6	0.00	0.00	23.2	2787.9	2788.0	2790.1	Vertical	
5467.0	6301.6	0.00	0.00	23.2	2787.9	2788.0	2790.1	Top Gas	
7367.0	8201.6	0.00	0.00	23.2	2787.9	2788.0	2790.1	TD at 8201.6	