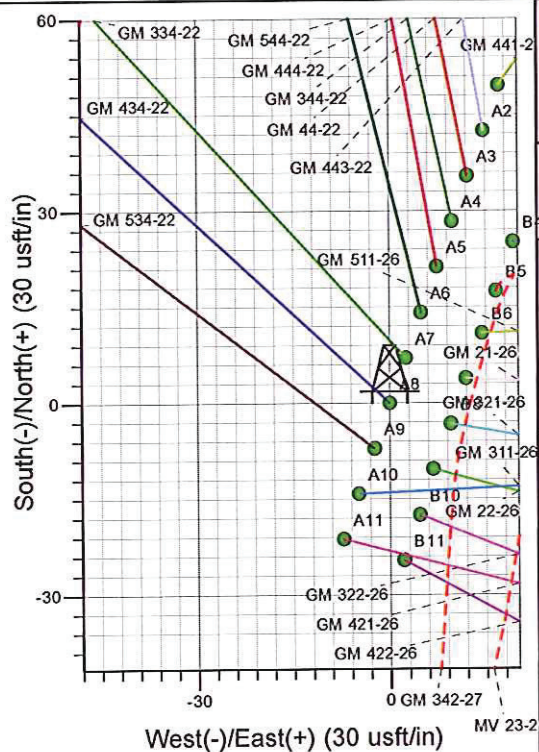
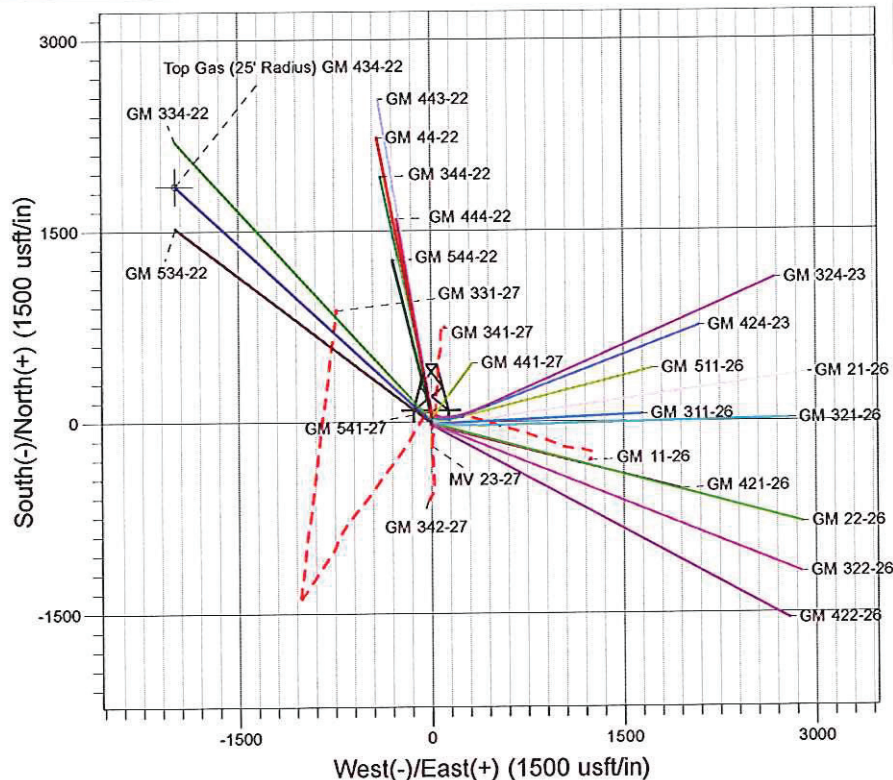
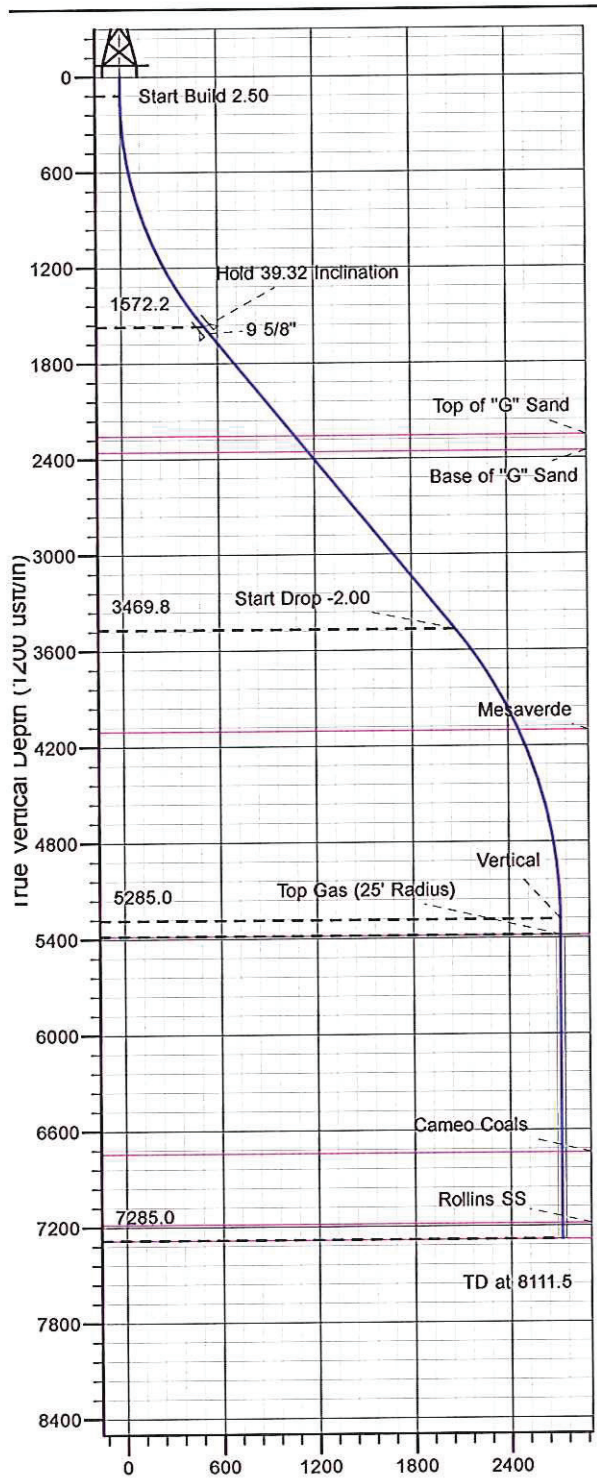




Surface Location: MV 23-27 Pad
 North American Datum 1983 , US State Plane 1983 , Colorado Central Zone
 Ground Elevation: 5770.0
 Northing 1617299.50 Easting 2269875.80 Latitude 39° 29' 58.975 N Longitude 108° 5' 15.865 W Slot A8
 KELLY BUSHING @ 5794.0usft (H&P 280 (24' RKB) kjs)



Project: GV 27-06S-096W
 Site: MV 23-27 Pad
 Well: GM 434-22
 Plan #2 27Sep10 kjs

M Azimuths to True North
 Magnetic North: 10.54°
 Magnetic Field
 Strength: 52357.7snT
 Dip Angle: 65.76°
 Date: 4/21/2010
 Model: IGRF2010

ANNOTATIONS

TVD	MD	Inc	Azi	+N/-S	+E/-W	VSec	Departure	Annotation
120.0	120.0	0.00	0.00	0.0	0.0	0.0	0.0	Start Build 2.50
1572.2	1692.8	39.32	312.90	353.2	-380.0	518.8	518.8	Hold 39.32 Inclination
3469.8	4145.6	39.32	312.90	1411.3	-1518.4	2073.0	2073.0	Start Drop -2.00
5285.0	6111.5	0.00	0.00	1852.8	-1993.5	2721.5	2721.5	Vertical
5385.0	6211.5	0.00	0.00	1852.8	-1993.5	2721.5	2721.5	Top Gas
7285.0	8111.5	0.00	0.00	1852.8	-1993.5	2721.5	2721.5	TD at 8111.5