

T6N, R67W, 6th P.M.

GREAT WESTERN OIL & GAS COMPANY

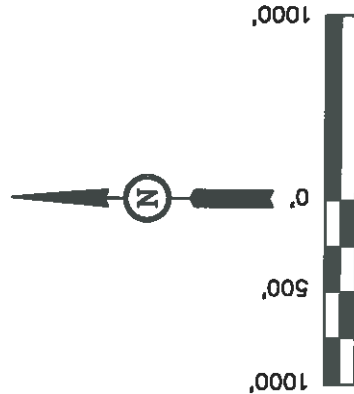
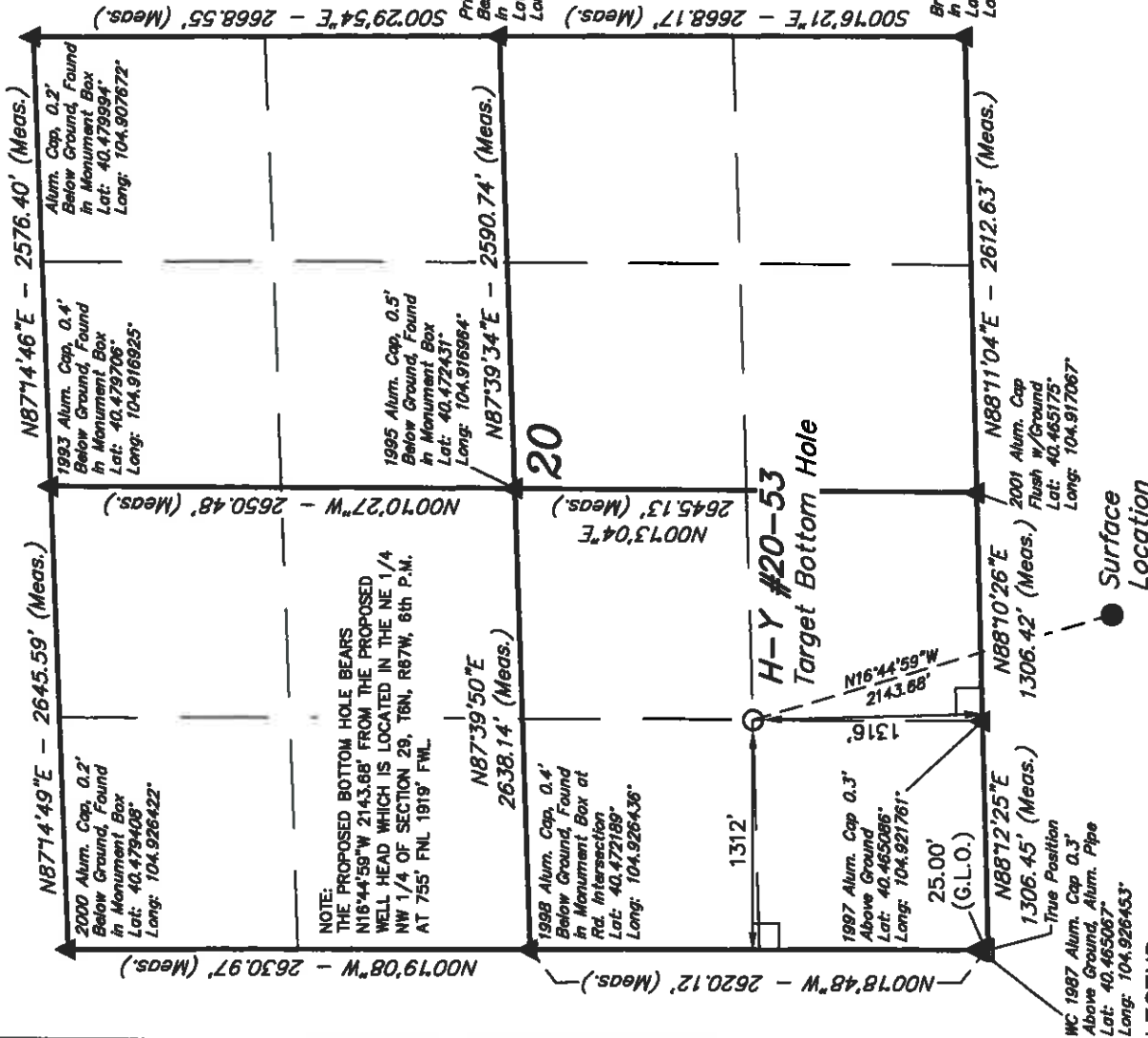
Well location, H-Y #20-53 (TARGET BOTTOM HOLE), located as shown in the SW 1/4 of Section 20, T6N, R67W, 6th P.M., Weld County, Colorado.

BASIS OF ELEVATION

USGS COOPERATIVE BASE NETWORK CONTROL STATION, DESIGNATION 'VERMILYEA'. NGS DATA SHEET LISTS THE NAVD 88 ELEVATION AS BEING 5026 FEET

BASIS OF BEARINGS

BASIS OF BEARINGS IS A G.P.S. OBSERVATION.



CERTIFICATE

THIS IS TO CERTIFY THAT THE ABOVE PLAT WAS PREPARED FROM FIELD NOTES OF ACTUAL SURVEYS MADE BY ME OR UNDER MY SUPERVISION AND THAT THE SAME ARE TRUE AND CORRECT TO THE BEST OF MY KNOWLEDGE AND BELIEF.

REGISTERED LAND SURVEYOR
 REGISTRATION NO. 17492
 STATE OF COLORADO
 02-22-12

REVISED: 02-22-12

UNTAH ENGINEERING & LAND SURVEYING
 85 SOUTH 200 EAST - VERNAL, UTAH 84078
 (435) 789-1017

SCALE	1" = 1000'	DATE SURVEYED:	02-07-12	DATE DRAWN:	02-10-12
PARTY	L.S. A.J. S.L.	REFERENCES	G.L.O. PLAT		
WEATHER	COOL	FILE			
					GREAT WESTERN OIL & GAS COMPANY