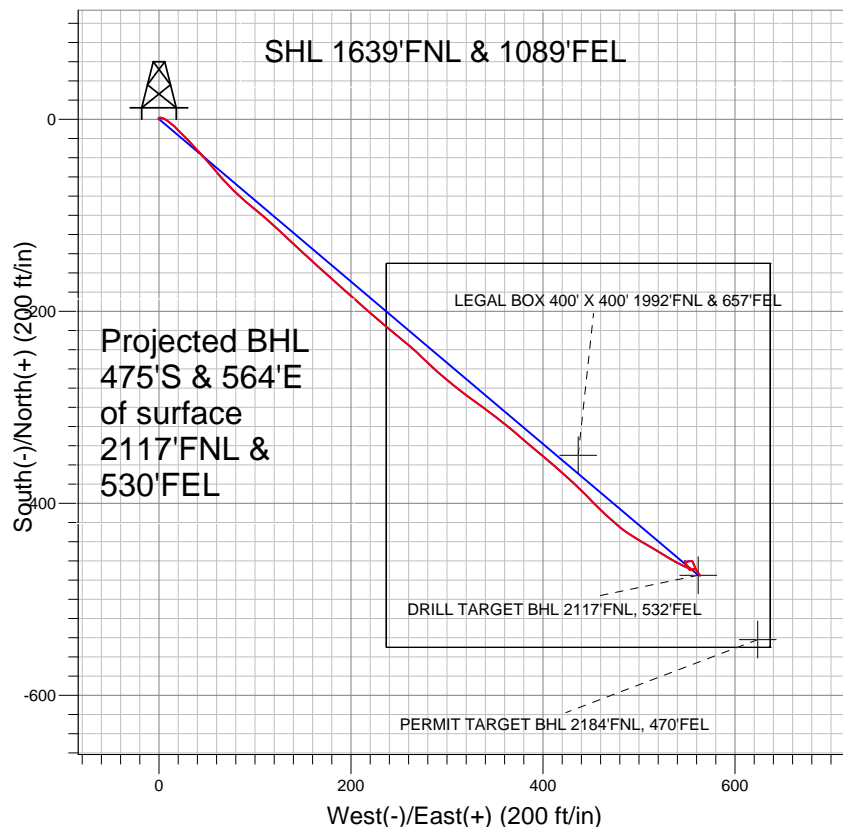


Synergy Resources

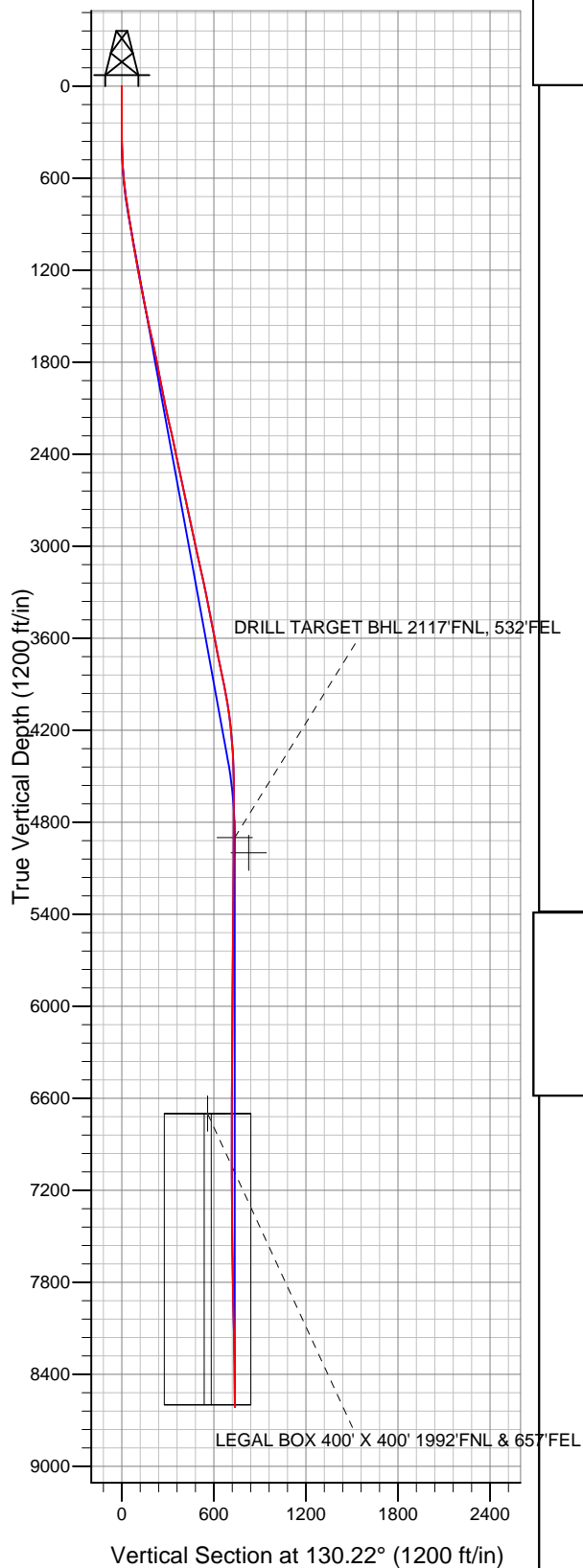


LEGEND

- ◆ SRC Pratt 42-29D, Wellbore #1, Plan #3 (4-13-11) V0
- Wellbore #1
- Survey #1

Final Survey Plot

Projected Final Survey -
8685'MD & 8615'TVD @ 737'VS
0.7 deg Inc 148.5 deg AZ



Project: SEC.29-T1N-R68W
Site: SRC Pratt 41-29D Pad Sec.29-T1N-R68W
Well: SRC Pratt 42-29D
Plan: Wellbore #1



Directional

Synergy Resources

SEC.29-T1N-R68W

SRC Pratt 41-29D Pad Sec.29-T1N-R68W

SRC Pratt 42-29D

Wellbore #1

Survey: Survey #1

Standard Survey Report

26 April, 2011

Survey	Wellbore Data									
	Measured Depth (ft)	Inclination (°)	Azimuth (°)	Vertical Depth (ft)	+N/-S (ft)	+E/-W (ft)	Vertical Section (ft)	Dogleg Rate (°/100ft)	Build Rate (°/100ft)	Turn Rate (°/100ft)
Main Survey	0.0	0.00	0.00	0.0	0.0	0.0	0.0	0.00	0.00	0.00
	125.0	0.60	322.10	125.0	0.5	-0.4	-0.6	0.48	0.48	0.00
	340.0	1.00	85.00	340.0	1.6	0.8	-0.4	0.66	0.19	57.16
	435.0	2.10	106.50	435.0	1.1	3.3	1.8	1.29	1.16	22.63
	529.0	3.60	121.20	528.8	-0.9	7.4	6.2	1.76	1.60	15.64
	623.0	5.90	130.80	622.5	-5.6	13.6	14.0	2.58	2.45	10.21
	717.0	7.80	136.10	715.8	-13.3	21.7	25.2	2.13	2.02	5.64
	811.0	9.10	135.30	808.8	-23.2	31.4	38.9	1.39	1.38	-0.85
	905.0	9.70	137.10	901.5	-34.3	42.0	54.2	0.71	0.64	1.91
	1,028.0	9.50	140.70	1,022.8	-49.7	55.5	74.5	0.51	-0.16	2.93
	1,122.0	10.40	137.90	1,115.4	-62.0	66.1	90.5	1.09	0.96	-2.98
	1,216.0	10.20	135.00	1,207.9	-74.2	77.6	107.2	0.59	-0.21	-3.09
	1,310.0	10.50	130.80	1,300.4	-85.7	90.0	124.1	0.86	0.32	-4.47

Company:	Synergy Resources	Local Co-ordinate Reference:	Well SRC Pratt 42-29D
Project:	SEC.29-T1N-R68W	TVD Reference:	WELL @ 5228.0ft (Original Well Elev)
Site:	SRC Pratt 41-29D Pad Sec.29-T1N-R68W	MD Reference:	WELL @ 5228.0ft (Original Well Elev)
Well:	SRC Pratt 42-29D	North Reference:	True
Wellbore:	Wellbore #1	Survey Calculation Method:	Minimum Curvature
Design:	Wellbore #1	Database:	Landmark

Survey										
Measured Depth (ft)	Inclination (°)	Azimuth (°)	Vertical Depth (ft)	+N-S (ft)	+E-W (ft)	Vertical Section (ft)	Dogleg Rate (°/100ft)	Build Rate (°/100ft)	Turn Rate (°/100ft)	
1,403.0	11.10	128.60	1,391.7	-96.8	103.4	141.5	0.78	0.65	-2.37	
1,497.0	12.10	132.80	1,483.8	-109.1	117.7	160.4	1.39	1.06	4.47	
1,591.0	12.40	133.00	1,575.7	-122.7	132.3	180.3	0.32	0.32	0.21	
1,684.0	11.90	131.90	1,666.6	-135.9	146.8	199.8	0.59	-0.54	-1.18	
1,778.0	12.00	133.10	1,758.5	-149.1	161.1	219.3	0.28	0.11	1.28	
1,872.0	10.70	131.30	1,850.7	-161.5	174.8	237.8	1.43	-1.38	-1.91	
1,966.0	10.90	132.60	1,943.0	-173.3	187.9	255.4	0.34	0.21	1.38	
2,060.0	11.10	131.30	2,035.3	-185.3	201.2	273.3	0.34	0.21	-1.38	
2,154.0	12.40	131.40	2,127.3	-197.9	215.6	292.4	1.38	1.38	0.11	
2,247.0	13.30	130.30	2,218.0	-211.5	231.3	313.1	1.00	0.97	-1.18	
2,341.0	11.60	129.80	2,309.8	-224.5	246.8	333.4	1.81	-1.81	-0.53	
2,435.0	11.40	129.80	2,401.9	-236.5	261.2	352.1	0.21	-0.21	0.00	
2,528.0	12.30	134.60	2,492.9	-249.3	275.3	371.2	1.43	0.97	5.16	
2,622.0	12.40	131.90	2,584.8	-263.1	289.9	391.3	0.62	0.11	-2.87	
2,716.0	12.70	128.40	2,676.5	-276.3	305.5	411.7	0.87	0.32	-3.72	
2,809.0	11.60	126.40	2,767.4	-288.2	321.1	431.2	1.27	-1.18	-2.15	
2,903.0	11.70	126.10	2,859.5	-299.4	336.4	450.2	0.12	0.11	-0.32	
2,997.0	12.20	126.90	2,951.4	-311.0	352.0	469.6	0.56	0.53	0.85	
3,090.0	12.50	131.20	3,042.3	-323.5	367.5	489.5	1.04	0.32	4.62	
3,184.0	12.90	130.20	3,134.0	-337.0	383.1	510.1	0.49	0.43	-1.06	
3,278.0	12.10	128.90	3,225.8	-349.9	398.8	530.5	0.90	-0.85	-1.38	
3,372.0	11.40	133.10	3,317.8	-362.5	413.3	549.6	1.18	-0.74	4.47	
3,466.0	10.90	131.10	3,410.0	-374.7	426.7	567.8	0.67	-0.53	-2.13	
3,560.0	10.70	133.50	3,502.4	-386.5	439.8	585.4	0.52	-0.21	2.55	
3,653.0	11.10	137.20	3,593.7	-399.0	452.1	602.9	0.87	0.43	3.98	
3,747.0	11.00	132.10	3,685.9	-411.7	464.9	620.8	1.04	-0.11	-5.43	
3,841.0	12.10	130.30	3,778.0	-424.0	479.1	639.6	1.23	1.17	-1.91	
3,934.0	11.70	120.40	3,869.1	-435.1	494.7	658.7	2.23	-0.43	-10.65	
4,028.0	10.80	121.80	3,961.2	-444.6	510.4	676.8	1.00	-0.96	1.49	
4,122.0	8.60	120.80	4,053.9	-452.8	523.9	692.4	2.35	-2.34	-1.06	
4,216.0	7.00	119.70	4,147.0	-459.3	534.9	705.0	1.71	-1.70	-1.17	
4,309.0	4.90	115.90	4,239.5	-463.8	543.4	714.4	2.30	-2.26	-4.09	
4,403.0	4.20	113.60	4,333.2	-466.9	550.2	721.6	0.77	-0.74	-2.45	
4,496.0	2.30	98.60	4,426.1	-468.6	555.1	726.5	2.22	-2.04	-16.13	
4,591.0	1.50	84.60	4,521.0	-468.8	558.2	728.9	0.97	-0.84	-14.74	
4,685.0	0.40	280.00	4,615.0	-468.6	559.1	729.5	2.01	-1.17	-175.11	
4,872.0	0.30	294.60	4,802.0	-468.3	558.1	728.5	0.07	-0.05	7.81	
4,970.0	0.31	261.87	4,900.0	-468.2	557.6	728.1	0.18	0.01	-33.40	
DRILL TARGET BHL 2117'FNL, 532'FEL										
5,060.0	0.40	240.00	4,990.0	-468.4	557.0	727.8	0.18	0.10	-24.30	
5,069.8	0.40	240.28	4,999.8	-468.4	557.0	727.8	0.02	0.00	2.88	
PERMIT TARGET BHL 2184'FNL, 470'FEL										
5,247.0	0.40	245.40	5,177.0	-469.0	555.9	727.3	0.02	0.00	2.89	
5,435.0	0.70	246.30	5,365.0	-469.7	554.2	726.5	0.16	0.16	0.48	
5,623.0	0.40	317.80	5,553.0	-469.7	552.7	725.4	0.37	-0.16	38.03	
5,810.0	0.60	343.70	5,740.0	-468.3	552.0	723.9	0.16	0.11	13.85	
5,998.0	0.70	320.90	5,928.0	-466.4	551.0	721.9	0.15	0.05	-12.13	
6,186.0	0.80	323.00	6,115.9	-464.5	549.5	719.5	0.06	0.05	1.12	
6,373.0	0.70	337.70	6,302.9	-462.4	548.3	717.2	0.12	-0.05	7.86	
6,560.0	0.30	52.90	6,489.9	-461.0	548.3	716.3	0.37	-0.21	40.21	
6,748.0	0.40	309.30	6,677.9	-460.3	548.1	715.8	0.29	0.05	-55.11	
6,770.2	0.32	306.60	6,700.2	-460.2	548.0	715.7	0.37	-0.36	-12.13	
LEGAL BOX 400' X 400' 1992'FNL & 657'FEL										
6,935.0	0.30	154.30	6,864.9	-460.4	547.8	715.6	0.37	-0.01	-92.44	

Company:	Synergy Resources	Local Co-ordinate Reference:	Well SRC Pratt 42-29D
Project:	SEC.29-T1N-R68W	TVD Reference:	WELL @ 5228.0ft (Original Well Elev)
Site:	SRC Pratt 41-29D Pad Sec.29-T1N-R68W	MD Reference:	WELL @ 5228.0ft (Original Well Elev)
Well:	SRC Pratt 42-29D	North Reference:	True
Wellbore:	Wellbore #1	Survey Calculation Method:	Minimum Curvature
Design:	Wellbore #1	Database:	Landmark

Survey									
Measured Depth (ft)	Inclination (°)	Azimuth (°)	Vertical Depth (ft)	+N/-S (ft)	+E/-W (ft)	Vertical Section (ft)	Dogleg Rate (°/100ft)	Build Rate (°/100ft)	Turn Rate (°/100ft)
7,123.0	0.70	98.00	7,052.9	-461.0	549.2	717.0	0.31	0.21	-29.95
7,310.0	0.50	70.40	7,239.9	-460.8	551.1	718.4	0.18	-0.11	-14.76
7,497.0	0.40	75.40	7,426.9	-460.4	552.5	719.2	0.06	-0.05	2.67
7,683.0	0.70	79.40	7,612.9	-460.0	554.2	720.3	0.16	0.16	2.15
7,870.0	1.60	154.70	7,799.9	-462.2	556.5	723.4	0.84	0.48	40.27
8,054.0	1.70	161.90	7,983.8	-467.1	558.4	728.0	0.12	0.05	3.91
8,238.0	0.90	138.80	8,167.7	-470.8	560.2	731.8	0.51	-0.43	-12.55
8,422.0	0.70	143.20	8,351.7	-472.8	561.9	734.3	0.11	-0.11	2.39
8,641.0	0.70	148.50	8,570.7	-475.0	563.4	736.9	0.03	0.00	2.42
8,685.0	0.70	148.50	8,614.7	-475.4	563.6	737.4	0.00	0.00	0.00

Checked By: _____ Approved By: _____ Date: _____