

SYNERGY RESOURCES CORPORATION  
20203 HIGHWAY 60  
PLATTEVILLE, Colorado

SRC Pratt  
SRC Pratt 42-29D

Ensign/33

## Post Job Summary

# Cement Production Casing

Date Prepared: 03/07/2012  
Version: 1

Service Supervisor: SALINAS, JOSE

Submitted by: MCKAY, ADAM

HALLIBURTON

# HALLIBURTON

## Wellbore Geometry

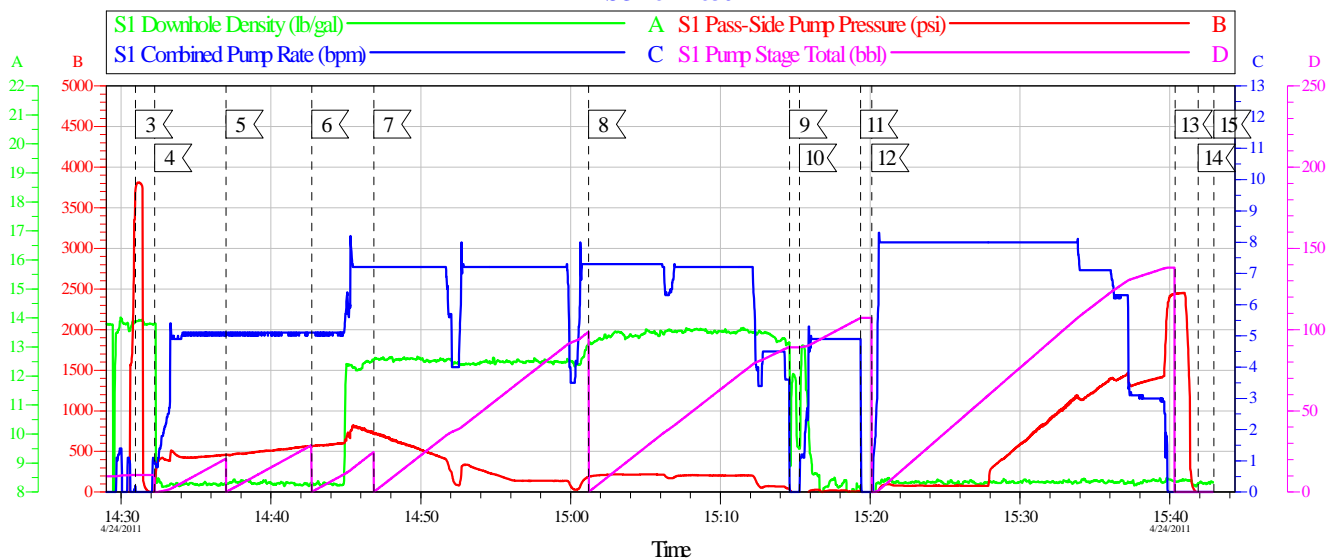
| Job Tubulars      |                   |         |       |           | MD     |           | TVD    |           | Excess | Shoe Joint Length |
|-------------------|-------------------|---------|-------|-----------|--------|-----------|--------|-----------|--------|-------------------|
| Type              | Description       | Size in | ID in | Wt lbm/ft | Top ft | Bottom ft | Top ft | Bottom ft | %      | ft                |
| Casing            | Surface Casing    | 8.63    | 8.097 | 24.00     | 0.00   | 940.00    | 0.00   | 0.00      |        | 0.00              |
| Open Hole Section | Open Hole         |         | 7.875 |           | 940.00 | 8,211.00  | 0.00   | 0.00      |        |                   |
| Casing            | Production Casing | 4.50    | 4.000 | 11.60     | 0.00   | 8,211.00  |        |           |        | 14.00             |

## Pumping Schedule

| Stage /Plug # | Fluid # | Fluid Type    | Fluid Name                    | Surface Density lbm/gal | Avg Rate bbl/min | Surface Volume | Downhole Volume |
|---------------|---------|---------------|-------------------------------|-------------------------|------------------|----------------|-----------------|
| 1             | 1       | Spacer        | Water Spacer                  | 8.33                    | 5.00             | 20.0 bbl       | 20.0 bbl        |
| 1             | 2       | Spacer        | MUD FLUSH III                 | 8.40                    | 5.00             | 24.0 bbl       | 24.0 bbl        |
| 1             | 3       | Spacer        | WATER SPACER                  | 8.33                    | 7.00             | 10.0 bbl       | 10.0 bbl        |
| 1             | 4       | Cement Slurry | EcconoCem B2 12.5#            | 12.50                   | 6.00             | 340.0 sacks    | 340.0 sacks     |
| 1             | 5       | Cement Slurry | 13.5# Fraccem                 | 13.50                   | 5.00             | 300.0 sacks    | 300.0 sacks     |
| 1             | 6       | Spacer        | ClaFix III Water Displacement | 8.33                    | 7.00             | 10.0 Gal       | 10.0 Gal        |

## Data Acquisition

SYENERGY RESOURCES  
SRC PRATT 42-29D 4.5 PRODUCTION  
SO# 8117836



### Global Event Log

| Intersection           | SPPP            | Intersection         | SPPP            | Intersection         | SPPP            |
|------------------------|-----------------|----------------------|-----------------|----------------------|-----------------|
| 3 < Test Lines         | 14:30:58 3719   | 4 < Pump Spacer 1    | 14:32:14 93.90  | 5 < Pump Spacer 2    | 14:37:00 459.3  |
| 6 < Pump Spacer 1      | 14:42:43 562.3  | 7 < Pump Lead Cement | 14:46:52 717.3  | 8 < Pump Tail Cement | 15:01:12 186.3  |
| 9 < Shutdown           | 15:14:37 30.07  | 10 < Drop Plug       | 15:15:16 -20.70 | 11 < Clean Lines     | 15:19:22 14.52  |
| 12 < Pump Displacement | 15:20:06 -18.70 | 13 < Bump Plug       | 15:40:21 2438   | 14 < End Job         | 15:41:54 -10.70 |
| 15 < Ending Job        | 15:42:56 -17.70 |                      |                 |                      |                 |

|                   |                       |                        |                 |
|-------------------|-----------------------|------------------------|-----------------|
| Customer:         | Job Date: 24-Apr-2011 | Sales Order #: 8117836 | HALLIBURTON     |
| Well Description: | Job Type:             | ADC Used:              | OptiCemv6.4.9   |
| Company Rep:      | Cement Supervisor:    | Elite #:               | 24-Apr-11 15:47 |

## Service Supervisor Reports

### Job Log

| Date/Time        | Chart # | Activity Code                                    | Pump Rate | Cum Vol | Pump | Pressure (psig) | Comments                                      |
|------------------|---------|--|-----------|---------|------|-----------------|---|
| 04/24/2011 08:00 |         | Call Out   |           |         |      |                 |   |
| 04/24/2011 10:30 |         | Pre-Convoy Safety Meeting                        |           |         |      |                 |   |
| 04/24/2011 11:30 |         | Arrive at Location from Service Center           |           |         |      |                 |   |
| 04/24/2011 12:00 |         | Pre-Rig Up Safety Meeting                        |           |         |      |                 |   |
| 04/24/2011 12:15 |         | Rig-Up Equipment                                 |           |         |      |                 |   |
| 04/24/2011 14:00 |         | Pre-Job Safety Meeting                           |           |         |      |                 |   |
| 04/24/2011 14:30 |         | Test Lines                                       | 2         | 2       |      | 3000.0          | TEST LINES WITH FRESH WATER                   |
| 04/24/2011 14:32 |         | Pump Spacer                                      | 5         | 20      |      | 93.0            | PUMP WATER SPACER @ 8.3 PPG                   |
| 04/24/2011 14:37 |         | Pump Spacer 1                                    | 5         | 24      |      | 459.0           | PUMP MUDFLUSH SPACER @ 8.3 PPG                |
| 04/24/2011 14:42 |         | Pump Spacer 2                                    | 5         | 10      |      | 562.0           | PUMP WATER SPACER @ 8.3 PPG                   |
| 04/24/2011 14:46 |         | Pump Lead Cement                                 | 7         | 114     |      | 717.0           | PUMP 340 SKS OF ECONOCEM @ 12.5 PPG (114 BBL) |
| 04/24/2011 15:01 |         | Pump Tail Cement                                 | 7         | 90      |      | 186.0           | PUMP 300 SKS OF FRACCEM @ 13.5 PPG (90 BBL)   |
| 04/24/2011 15:10 |         | Clean Lines                                      | 5         | 10      |      | 100.0           | WASH LINES WITH FRESH WATER                   |
| 04/24/2011 15:15 |         | Drop Top Plug                                    | 0         | 0       |      | .0              | PLUG LEFT CMT HEAD                            |
| 04/24/2011 15:20 |         | Pump Displacement                                | 7         |         |      | 18.0            | PUMP 134BBL OF FRESH WATER FOR DISPLACEMENT   |
| 04/24/2011 15:35 |         | Other  | 3         | 124     |      | 1365.0          | SLOW RATE DOWN TO BUMP PLUG                   |
| 04/24/2011 15:40 |         | Bump Plug  | 3         | 134     |      | 2438.0          | BUMP PLUG WITH 500 PSI OVER                   |
| 04/24/2011 15:41 |         | Release Casing Pressure                          | 0         | 0       |      | .0              | RELEASE PSI                                   |
| 04/24/2011 15:42 |         | Check Floats                                     | 0         | 0       |      | .0              | CHECK FLOATS HELD GOOD                        |
| 04/24/2011 15:43 |         | End Job  |           |         |      |                 |   |
| 04/24/2011 15:45 |         | Pre-Rig Down Safety Meeting                      |           |         |      |                 |   |
| 04/24/2011 15:50 |         | Rig-Down Equipment                               |           |         |      |                 |   |
| 04/24/2011 16:30 |         | Depart Location Safety Meeting                   |           |         |      |                 |   |
| 04/24/2011 16:45 |         | Depart Location for Service Center or Other Site |           |         |      |                 |   |

## The Road to Excellence Starts with Safety

|   |                                |                                    |                        |
|---|--------------------------------|------------------------------------|------------------------|
| Sold To #: 359915                       | Ship To #: 2849806             | Quote #:                           | Sales Order #: 8117836 |
| Customer: SYNERGY RESOURCES CORPORATION |                                | Customer Rep:                      |                        |
| Well Name: SRC Pratt                    |                                | Well #: 42-29D                     | API/UWI #:             |
| Field: WATTENBERG                       | City (SAP): DACONO             | County/Parish: Weld                | State: Colorado        |
| Contractor: Ensign                      |                                | Rig/Platform Name/Num: 33          |                        |
| Job Purpose: Cement Production Casing   |                                |                                    |                        |
| Well Type: Development Well             |                                | Job Type: Cement Production Casing |                        |
| Sales Person: FLING, MATTHEW            | Srvc Supervisor: SALINAS, JOSE |                                    | MBU ID Emp #: 100319   |

## Job Personnel

| HES Emp Name        | Exp Hrs | Emp #  | HES Emp Name             | Exp Hrs | Emp #  | HES Emp Name     | Exp Hrs | Emp #  |
|---------------------|---------|--------|--------------------------|---------|--------|------------------|---------|--------|
| BANUELOS, GUADALUPE | 0.0     | 372277 | FANTASIA, JOSEPH Brandon | 0.0     | 485445 | IPSON, TIMOTHY J | 0.0     | 485018 |
| SALINAS, JOSE R     | 0.0     | 100319 | SINCLAIR, RICHARD        | 0.0     | 368195 |                  |         |        |

## Equipment

| HES Unit # | Distance-1 way | HES Unit # | Distance-1 way | HES Unit # | Distance-1 way | HES Unit # | Distance-1 way |
|------------|----------------|------------|----------------|------------|----------------|------------|----------------|
| 10829457   | 30 mile        | 10857012C  | 30 mile        | 10988836C  | 30 mile        | 11398490   | 30 mile        |
| 11527037   | 30 mile        | 11566182   | 30 mile        | 11605597   | 30 mile        |            |                |

## Job Hours

| Date  | On Location Hours | Operating Hours | Date                                       | On Location Hours | Operating Hours | Date | On Location Hours | Operating Hours |
|-------|-------------------|-----------------|--|-------------------|-----------------|------|-------------------|-----------------|
|       |                   |                 |  |                   |                 |      |                   |                 |
| TOTAL |                   |                 | Total is the sum of each column separately |                   |                 |      |                   |                 |

## Job

## Job Times

| Formation Name         |          |                   |          | Date          | Time            | Time Zone |
|------------------------|----------|-------------------|----------|---------------|-----------------|-----------|
| Formation Depth (MD)   | Top      | Bottom            |          | Called Out    | 24 - Apr - 2011 | 08:00 MST |
| Form Type              | BHST     |                   |          | On Location   | 24 - Apr - 2011 | 11:00 MST |
| Job depth MD           | 8150. ft | Job Depth TVD     | 8150. ft | Job Started   | 24 - Apr - 2011 | 14:00 MST |
| Water Depth            |          | Wk Ht Above Floor | 3. ft    | Job Completed | 24 - Apr - 2011 | 15:43 MST |
| Perforation Depth (MD) | From     | To                |          | Departed Loc  | 24 - Apr - 2011 | 16:45 MST |

## Well Data

| Description       | New / Used | Max pressure psig | Size in | ID in | Weight lbm/ft | Thread | Grade | Top MD ft | Bottom MD ft | Top TVD ft | Bottom TVD ft |
|-------------------|------------|-------------------|---------|-------|---------------|--------|-------|-----------|--------------|------------|---------------|
| Open Hole         |            |                   |         | 7.875 |               |        |       | 940.      | 8211.        | .          | .             |
| Production Casing | New        |                   | 4.5     | 4.    | 11.6          |        |       | .         | 8211.        |            |               |
| Surface Casing    | Used       |                   | 8.625   | 8.097 | 24.           |        | J-55  | .         | 940.         | .          | .             |

Sales/Rental/3<sup>rd</sup> Party (HES)

| Description                          | Qty | Qty uom | Depth | Supplier |
|--------------------------------------|-----|---------|-------|----------|
| SHOE,FLT,4-1/2 8RD,2-3/4 SSII        | 1   | EA      |       |          |
| CLR,FLT,4-1/2 8RD,9.5-13.5PPF,2-3/4  | 1   | EA      |       |          |
| CENTRALIZER ASSY - API - 4-1/2 CSG X | 36  | EA      |       |          |
| CLAMP - LIMIT - 4-1/2 - HINGED -     | 1   | EA      |       |          |
| KIT,HALL WELD-A                      | 1   | EA      |       |          |
| PLUG ASSY - 3W LATCHDOWN - 4-1/2 IN  | 1   | EA      |       |          |
| Description                          | Qty | Qty uom | Depth | Supplier |

|  |                               |                                |             |                  |             |                |                               |                                   |                         |                     |                               |                     |             |           |     |
|--|-------------------------------|--------------------------------|-------------|------------------|-------------|----------------|-------------------------------|-----------------------------------|-------------------------|---------------------|-------------------------------|---------------------|-------------|-----------|-----|
| BAFFLE ASSY - 4-1/2 8RD LATCHDOWN PLUG   |                               |                                |             |                  |             |                |                               |                                   |                         | 1                   | EA                            |                     |             |           |     |
| <b>Tools and Accessories</b>             |                               |                                |             |                  |             |                |                               |                                   |                         |                     |                               |                     |             |           |     |
| <b>Type</b>                              | <b>Size</b>                   | <b>Qty</b>                     | <b>Make</b> | <b>Depth</b>     | <b>Type</b> | <b>Size</b>    | <b>Qty</b>                    | <b>Make</b>                       | <b>Depth</b>            | <b>Type</b>         | <b>Size</b>                   | <b>Qty</b>          | <b>Make</b> |           |     |
| Guide Shoe                               |                               |                                |             |                  | Packer      |                |                               |                                   |                         | Top Plug            |                               |                     |             |           |     |
| Float Shoe                               |                               |                                |             |                  | Bridge Plug |                |                               |                                   |                         | Bottom Plug         |                               |                     |             |           |     |
| Float Collar                             |                               |                                |             |                  | Retainer    |                |                               |                                   |                         | SSR plug set        |                               |                     |             |           |     |
| Insert Float                             |                               |                                |             |                  |             |                |                               |                                   |                         | Plug Container      |                               |                     |             |           |     |
| Stage Tool                               |                               |                                |             |                  |             |                |                               |                                   |                         | Centralizers        |                               |                     |             |           |     |
| <b>Miscellaneous Materials</b>           |                               |                                |             |                  |             |                |                               |                                   |                         |                     |                               |                     |             |           |     |
| Gelling Agt                              |                               |                                | Conc        |                  | Surfactant  |                |                               | Conc                              |                         | Acid Type           |                               |                     | Qty         | Conc      | %   |
| Treatment Fld                            |                               |                                | Conc        |                  | Inhibitor   |                |                               | Conc                              |                         | Sand Type           |                               |                     | Size        |           | Qty |
| <b>Fluid Data</b>                        |                               |                                |             |                  |             |                |                               |                                   |                         |                     |                               |                     |             |           |     |
| <b>Stage/Plug #: 1</b>                   |                               |                                |             |                  |             |                |                               |                                   |                         |                     |                               |                     |             |           |     |
| <b>Fluid #</b>                           | <b>Stage Type</b>             | <b>Fluid Name</b>              |             |                  | <b>Qty</b>  | <b>Qty uom</b> | <b>Mixing Density lbm/gal</b> | <b>Yield ft3/sk</b>               | <b>Mix Fluid Gal/sk</b> | <b>Rate bbl/min</b> | <b>Total Mix Fluid Gal/sk</b> |                     |             |           |     |
| 1  | Water Spacer                  |                                |             |                  | 20.00       | bbl            | 8.33                          | .0                                | .0                      | 5.0                 |                               |                     |             |           |     |
| 2  | MUD FLUSH III                 | MUD FLUSH III - SBM (528788)   |             |                  | 24.00       | bbl            | 8.4                           | .0                                | .0                      | 5.0                 |                               |                     |             |           |     |
| 3  | WATER SPACER                  |                                |             |                  | 10.00       | bbl            | 8.33                          | .0                                | .0                      | 7.0                 |                               |                     |             |           |     |
| 4  | EcconoCem B2 12.5#            | ECONOCHEM (TM) SYSTEM (452992) |             |                  | 340.0       | sacks          | 12.5                          | 1.89                              | 10.29                   | 6.0                 | 10.29                         |                     |             |           |     |
|  | 10.29 Gal                     | FRESH WATER                    |             |                  |             |                |                               |                                   |                         |                     |                               |                     |             |           |     |
| 5  | 13.5# Fracchem                | FRACCEM (TM) SYSTEM (452963)   |             |                  | 300.0       | sacks          | 13.5                          | 1.7                               | 8.16                    | 5.0                 | 8.16                          |                     |             |           |     |
|  | 8.16 Gal                      | FRESH WATER                    |             |                  |             |                |                               |                                   |                         |                     |                               |                     |             |           |     |
| 6  | ClaFix III Water Displacement |                                |             |                  | 10.00       | Gal            | 8.33                          | .0                                | .0                      | 7.0                 |                               |                     |             |           |     |
| <b>Calculated Values</b>                 |                               |                                |             | <b>Pressures</b> |             |                |                               | <b>Volumes</b>                    |                         |                     |                               |                     |             |           |     |
| Displacement                             |                               |                                |             | Shut In: Instant |             |                |                               | Lost Returns                      |                         |                     |                               | Cement Slurry       |             | Pad       |     |
| Top Of Cement                            |                               |                                |             | 5 Min            |             |                |                               | Cement Returns                    |                         |                     |                               | Actual Displacement |             | Treatment |     |
| Frac Gradient                            |                               |                                |             | 15 Min           |             |                |                               | Spacers                           |                         |                     |                               | Load and Breakdown  |             | Total Job |     |
| <b>Rates</b>                             |                               |                                |             |                  |             |                |                               |                                   |                         |                     |                               |                     |             |           |     |
| Circulating                              |                               |                                |             | Mixing           |             |                |                               | Displacement                      |                         |                     |                               | Avg. Job            |             |           |     |
| Cement Left In Pipe                      |                               | Amount                         |             | 14 ft            |             | Reason         |                               | Shoe Joint                        |                         |                     |                               |                     |             |           |     |
| Frac Ring # 1 @                          |                               | ID                             |             | Frac ring # 2 @  |             | ID             |                               | Frac Ring # 3 @                   |                         | ID                  |                               | Frac Ring # 4 @     |             | ID        |     |
| The Information Stated Herein Is Correct |                               |                                |             |                  |             |                |                               | Customer Representative Signature |                         |                     |                               |                     |             |           |     |