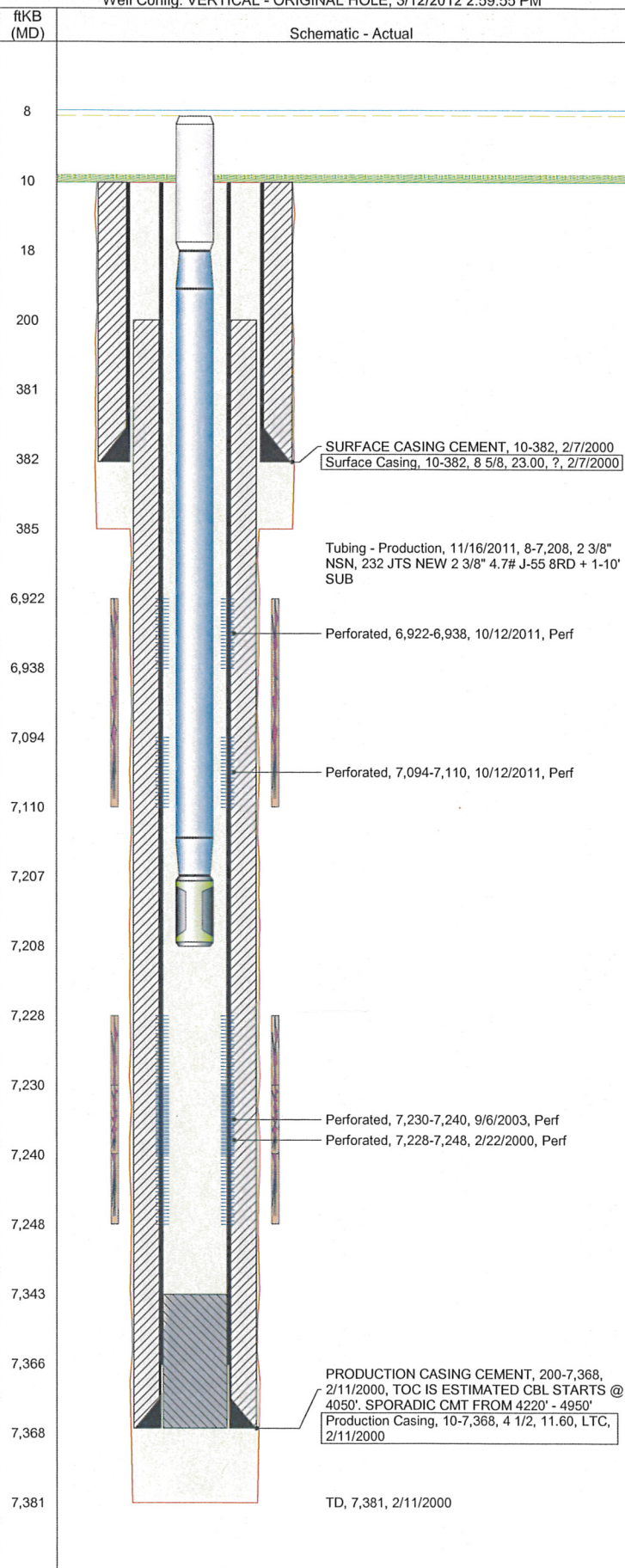


Well Name: LHI 14-34

Well Config: VERTICAL - ORIGINAL HOLE, 3/12/2012 2:59:55 PM



## Well Header

API	Business Unit		Spud Date		Well Configuration Type	
05-123-19809	WATTENBERG		2/7/2000		VERTICAL	
Orig KB Elev (ft)	KB - GL / ...	Quarter Quarter	Sec/Abs	Twn/Sur...	Range	P & A Date
4,854.00	10	SESW	14	4N	67W	

Comment

## Directions To Well

CR 23/44,W.4/10,N.2/10 INTO.

Current PBD (ftKB)

ORIGINAL HOLE - 7343.0

## Bottom Hole Location

North-South Distance (ft)	From N or S Line	East-West Distance (ft)	From E or W Line

## PBDs

Date	Depth (ftKB)	Method	Comment
2/18/2000	7,343.0	CASED HOLE LOG	DEPTH LOGGER ON CBL
9/11/2002	7,327.0	TAG	C/O LND TBG

## Wellbore Sections

Section	Size (in)	Act Top (ftKB)	Act Btm (ftKB)
SURFACE	12 1/4	10.0	385.0
PRODUCTION	7 7/8	385.0	7,381.0

## Zone Statuses

Zone	Status Date	Status	Job
CODELL	2/29/2000	PR	DRILLING/COMPLETION - ORIGI...
CODELL	9/11/2003	PR	RE-FRAC, 9/5/2003 00:00
CODELL	10/12/2011	SI	RECOMPLETION, 10/11/2011 08:00
NIOBRARA	11/6/2011	PR	RECOMPLETION, 10/11/2011 08:00
NIOBRARA	11/21/2011	PR	RECOMPLETION, 10/11/2011 08:00
CODELL	11/21/2011	PR	RECOMPLETION, 10/11/2011 08:00

## Casing Strings

Casing Description	Run Date	String OD (in)	String Wt (lbs/ft)	String Grade	Top (ftKB)	Set Depth (ftKB)
Surface Casing	2/7/2000	8 5/8	23.00	?	10.0	382.0
Production Casing	2/11/2000	4 1/2	11.60	LTC	10.0	7,368.0

## Cement

Description	Top (ftKB)	Btm (ftKB)
SURFACE CASING CEMENT	10.0	382.0
PRODUCTION CASING CEMENT	200.0	7,368.0

## Tubing Components

Item Description	OD (in)	Wt (lbs/ft)	Grade	Jts	Len (ft)
Tubing Pup Joint	2 3/8	4.70	J-55	1	10.00
EUE 8rd Tubing	2 3/8	4.70	J-55	232	7,188.59
Notched Seating Nipple	2 3/8	5.40	J-55	1	1.20

## Perforation Data

Zone	Bnch/Stg	Entered Shot Total	Top (ftKB)	Btm (ftKB)	Date
NIOBRARA, ORIGI...	A	32	6,922.0	6,938.0	10/12/2011
NIOBRARA, ORIGI...	B	32	7,094.0	7,110.0	10/12/2011
CODELL, ORIGINA...		80	7,228.0	7,248.0	2/22/2000
CODELL, ORIGINA...		40	7,230.0	7,240.0	9/6/2003

## Stimulations & Treatments

Bnch/...	Date	Zone	Primary Job Type
	2/25/2000	CODELL, ORIGINAL HOLE	DRILLING/COMPLETION - ORIGINAL

Comment

Total Add Amount	V (pumped) (gal)	V (slurry) (gal)	V (gas) (mcf)
Proppant AcFrac Black 800 L; Proppant 400160 lb; Proppant 100 MESH 14800 lb		129402	

Avg Treat Pressure (psi)	Max Treat Pressure (psi)	Avg Treat Rate (bbl/min)	Max Treat Rate (bbl/min)
3,120.0	3,606.0	14.50	15.00

Bnch/...	Date	Zone	Primary Job Type
	9/9/2003	CODELL, ORIGINAL HOLE	RE-FRAC

Comment

Total Add Amount	V (pumped) (gal)	V (slurry) (gal)	V (gas) (mcf)
Proppant 260220 lb		125202	
Avg Treat Pressure (psi)	Max Treat Pressure (psi)	Avg Treat Rate (bbl/min)	Max Treat Rate (bbl/min)
3,624.0		14.23	

**Well Name: LHI 14-34**

Well Config: VERTICAL - ORIGINAL HOLE, 3/12/2012 2:59:55 PM

## Stimulations & Treatments

Bnch/...	Date	Zone	Primary Job Type
A&B	11/4/2011	NIOBRARA, ORIGINAL HOLE	RECOMPLETION

### Comment

(NIOBRARA A&B RC): POST-FRAC: JOB WENT WELL. NO ISSUES TO REPORT. TREATMENT AVGS: 66.3 F, 10.41 PH, 19.5 CP, NOLTE = 0.05. 5 MIN = 3227 PSI.

Total Add Amount	V (pumped) (gal)	V (slurry) (gal)	V (gas) (mcf)
Proppant Ottawa 240813.801 lb	151322	162252	
Avg Treat Pressure (psi)	Max Treat Pressure (psi)	Avg Treat Rate (bbl/min)	Max Treat Rate (bbl/min)
4,283.0	4,441.0	49.50	52.00

## Other In Hole

Run Date	Description	OD (in)	Top (ftKB)	Btm (ftKB)

## Logs

Date	Type	Top (ftKB)	Btm (ftKB)
2/11/2000	COMPENSATED DENSITY	10.0	7,381.0
2/11/2000	INDUCTION	10.0	7,399.0
2/18/2000	CEMENT BOND	4,030.0	7,338.0

