
CHEVRON - MID-CONTINENT EBIZ

**Union Pacific 48-29
RANGELY WEBER SAND UNIT
Rio Blanco County , Colorado**

Cement Liner

07-Dec-2011

Job Site Documents

The Road to Excellence Starts with Safety

Sold To #: 338668	Ship To #: 338668	Quote #:	Sales Order #: 9112154
Customer: CHEVRON - MID-CONTINENT EBIZ	Customer Rep: Cramer, Roy		
Well Name: Union Pacific	Well #: 48-29	API/UWI #: 05-103-06231	
Field:	City (SAP): HOUSTON	County/Parish: Rio Blanco	State: Colorado
Legal Description: Section 29 Township 02N Range 102W			
Job Purpose: Cement Liner			
Well Type: Injection Well	Job Type: Cement Liner		
Sales Person: SPENCER, WESTON	Srv Supervisor: DEAN, MARK	MBU ID Emp #: 454214	

Job Personnel

HES Emp Name	Exp Hrs	Emp #	HES Emp Name	Exp Hrs	Emp #	HES Emp Name	Exp Hrs	Emp #
DEAN, MARK Christophe	7	454214	FUCHS, ANDREW Peter	7	489821	FUCHS, JUSTIN Mark	7	509124
SHIFLETT, JESSE Amos	7	469551						

Equipment

HES Unit #	Distance-1 way	HES Unit #	Distance-1 way	HES Unit #	Distance-1 way	HES Unit #	Distance-1 way
11076824	60	10948690	60				

Job Hours

Date	On Location Hours	Operating Hours	Date	On Location Hours	Operating Hours	Date	On Location Hours	Operating Hours
12-07-2011	8	6						
TOTAL			Total is the sum of each column separately					

Job

Job Times

Formation Name					Date	Time	Time Zone
Formation Depth (MD)	Top		Bottom		Called Out	07 - Dec - 2011 02:00	CST
Form Type		BHST	145 degF		On Location	07 - Dec - 2011 06:00	CST
Job depth MD	5000. ft	Job Depth TVD			Job Started	07 - Dec - 2011 10:15	CST
Water Depth		Wk Ht Above Floor			Job Completed	07 - Dec - 2011 12:15	CST
Perforation Depth (MD)	From	To			Departed Loc	07 - Dec - 2011 14:00	CST

Well Data

Description	New / Used	Max pressure psig	Size in	ID in	Weight lbm/ft	Thread	Grade	Top MD ft	Bottom MD ft	Top TVD ft	Bottom TVD ft
Liner	Unknown		5.5	4.892	17.		K-55	.	4957.		
Previous Casing	Unknown		7.	6.366	23.		J-55	.	5118.		

Tools and Accessories

Type	Size	Qty	Make	Depth	Type	Size	Qty	Make	Depth	Type	Size	Qty	Make
Guide Shoe					Packer					Top Plug			
Float Shoe					Bridge Plug					Bottom Plug			
Float Collar					Retainer					SSR plug set			
Insert Float										Plug Container	5.5	1	HES
Stage Tool										Centralizers			

Miscellaneous Materials

Gelling Agt		Conc		Surfactant		Conc		Acid Type		Qty		Conc	%
Treatment Fld		Conc		Inhibitor		Conc		Sand Type		Size		Qty	

Fluid Data

Stage/Plug #: 1													
Fluid #	Stage Type	Fluid Name			Qty	Qty uom	Mixing Density lbm/gal	Yield ft ³ /sk	Mix Fluid Gal/sk	Rate bbl/min	Total Mix Fluid Gal/sk		

Stage/Plug #: 1									
Fluid #	Stage Type	Fluid Name	Qty	Qty uom	Mixing Density lbm/gal	Yield ft3/sk	Mix Fluid Gal/sk	Rate bbl/min	Total Mix Fluid Gal/sk
1	MUD FLUSH III	MUD FLUSH III - SBM (528788)	20	bbl	8.4	.0	.0	5.0	
2	BondCem V1	BONDCEM (TM) SYSTEM (452977)	215	sacks	13.5	1.46	6.99	5.0	6.99
6.99 Gal		FRESH WATER							
3	Water Displacement		113.96	bbl	8.34	.0	.0	5.0	
Calculated Values		Pressures		Volumes					
Displacement	113.96	Shut In: Instant		Lost Returns	0	Cement Slurry	55.91	Pad	
Top Of Cement	SURF	5 Min		Cement Returns	5	Actual Displacement	113.5	Treatment	
Frac Gradient		15 Min		Spacers	20	Load and Breakdown		Total Job	189
Rates									
Circulating	3	Mixing	5	Displacement	5	Avg. Job	5		
Cement Left In Pipe	Amount	45 ft	Reason	Shoe Joint					
Frac Ring # 1 @	ID	Frac ring # 2 @	ID	Frac Ring # 3 @	ID	Frac Ring # 4 @	ID		
The Information Stated Herein Is Correct				Customer Representative Signature					

Summit Version: 7.2.27

Wednesday, December 07, 2011 14:15:00

Circulate well	12/07/2011 10:15		3	45			500.0	Pumped 45 BBL of Brine Water to break circulation
Test Lines	12/07/2011 11:00							Tested Lines to 3000 PSI (Pressure Held)

Sold To #: 338668

Ship To #: 338668

Quote #:

Sales Order #: 9112154

SUMMIT Version: 7.2.27

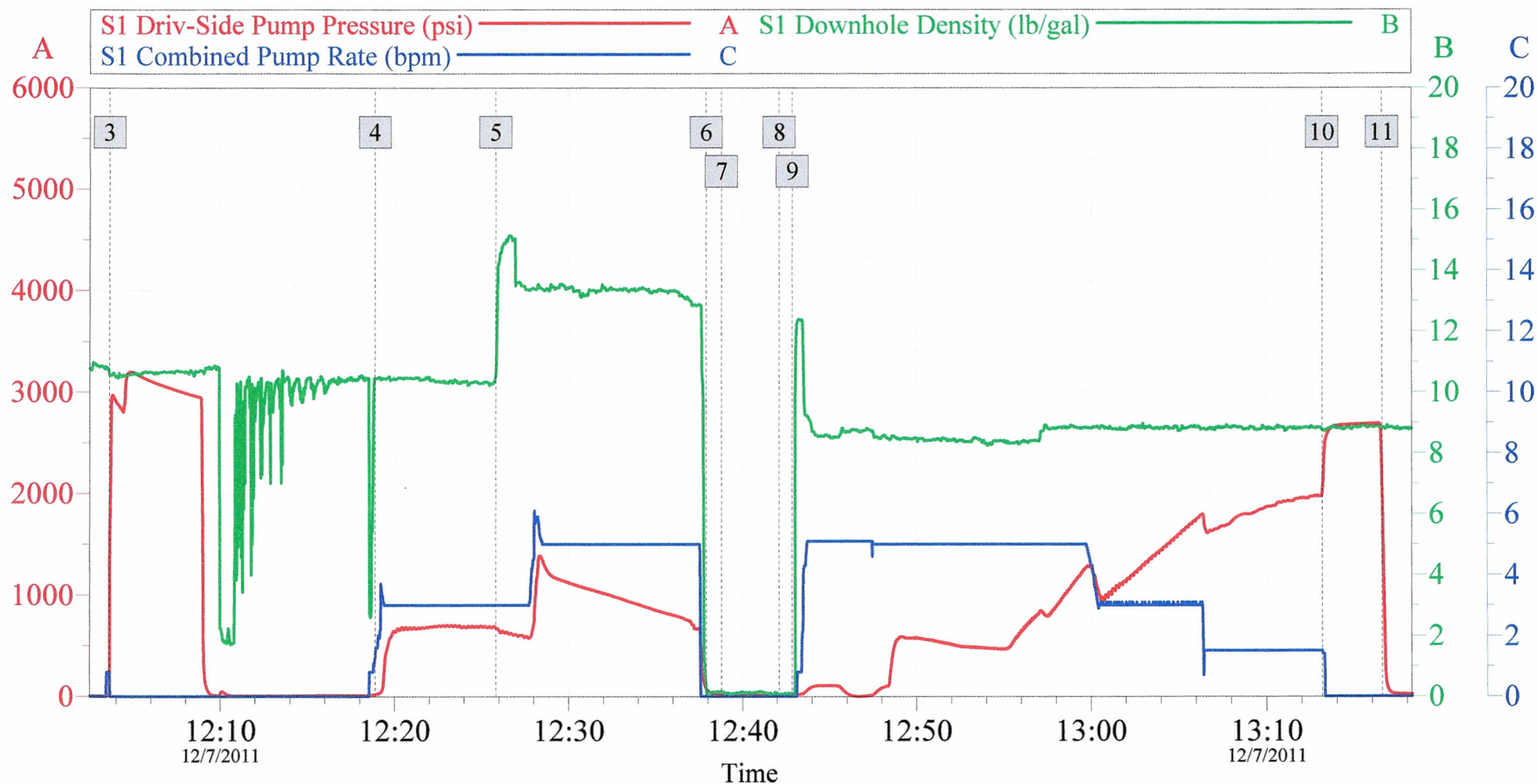
Wednesday, December 07, 2011 02:15:00

Cementing Job Log

Activity Description	Date/Time	Cht #	Rate bbl/min	Volume bbl		Pressure psig		Comments
				Stage	Total	Tubing	Casing	
Pump Spacer	12/07/2011 11:18		3	20			700.0	20 BBL Mud Flush III (8.5#)
Pump Cement	12/07/2011 11:25		5	55.91			1160.0	BondCem CMT D: 13.5# Y: 1.46 W: 6.99 (215 sks)
Shutdown	12/07/2011 11:39							shutdown to drop plug
Drop Top Plug	12/07/2011 11:40							Tattle Tell opened, plug left head
Clean Lines	12/07/2011 11:41							Washed pump & Lines on top of plug as part of displacement per Customer request
Pump Displacement	12/07/2011 11:42		5	113.96			505.0	Fresh Water Displacement (last 40 BBL Brine Water)
Slow Rate	12/07/2011 12:00		3	85			1000.0	Caught plug & slowed rate to 3bbl/min
Slow Rate	12/07/2011 12:06		1.5	105			1600.0	Slowed rate in preparation to land plug
Cement Returns to Surface	12/07/2011 12:10		1.5	109			1920.0	5 BBL CMT returned to surface
Bump Plug	12/07/2011 12:13		1.5	113.5			1970.0	Pressured over 500 PSI to 2500 PSI
Check Floats	12/07/2011 12:16							1 BBL back to truck (floats held)
Post-Job Safety Meeting (Pre Rig-Down)	12/07/2011 12:18							Discussed hazards & job responsibilities with crew.
Rig-Down Equipment	12/07/2011 12:25							Loaded iron, & hoses onto the iron truck & secured the load.
Pre-Convoy Safety Meeting	12/07/2011 13:45							Discussed fatigue and hours with crew before departure.
Depart Location for Service Center or Other Site	12/07/2011 14:00							Thankyou for choosing Halliburton!

Chevron 5.5 Liner

12-07-2011



Global Event Log

3	Test Lines	12:03:37	4	Pump Spacer 1	12:18:54	5	Pump Cement	12:25:50
6	Shutdown	12:37:55	7	Drop Plug	12:38:47	8	Clean Lines	12:42:06
9	Pump Displacement	12:42:51	10	Bump Plug	13:13:11	11	Check Floats	13:16:35

Customer: Chevron
Well Description: Union Pacific
Supervisor: Mark Dean

Job Date: 07-Dec-2011
Well #: 48-29
Operator: Jessie Shiflett

Sales Order #: 9112154
Pump #: 11076824

OptiCem v6.4.10
07-Dec-11 13:55

Peterson, Diane L. (DLPE)

From: Olree, Doyle [Centaur Consulting]
Sent: Saturday, December 03, 2011 10:45 AM
To: David.Andrews@state.co.us
Cc: Peterson, Diane L. (DLPE)
Subject: UP 48-29 tie back casing job

David, I left a voice mail w/ Mike Longworth about running a 5 ½" tie back casing string on UP 48-29 in Rangely but a rep in the office isn't sure that he is still working w/ you. The casing is scheduled to be run on Tuesday, Dec 6 and cemented on Dec 7th. My cell phone is 970-964-8010. Thanks you. Doyle Olree.