

Frac Wellbore Schematic Report

Well Name: DINNER 01-02

Well Config: VERTICAL - ORIGINAL HOLE, 3/12/2012 1:29:24 PM

Well Header

API 05-123-12207	Business Unit WATTENBERG	Spud Date 12/28/1984	Well Configuration Type VERTICAL
Orig KB Elev (ft) 4,821.00	KB - GL / ... 10	Quarter Quarter SENESE	Sec/Abs 1
	Twn/Sur... 4N	Range 65W	P & A Date
Comment			

Directions To Well

CR 49 & CR 48 WEST 1/10 NORTH 3/10 TO T/B EAST INTO

Current PBD (ftKB)

ORIGINAL HOLE - 7112.6

Bottom Hole Location

North-South Distance (ft)	From N or S Line	East-West Distance (ft)	From E or W Line
---------------------------	------------------	-------------------------	------------------

PBDs

Date	Depth (ftKB)	Method	Comment
1/10/1985	7,112.0	CASED HOLE LOG	DEPTH LOGGER - RUN #2
9/7/2001	7,112.0	TAG	FILL

Wellbore Sections

Section	Size (in)	Act Top (ftKB)	Act Btm (ftKB)
SURFACE	12 1/4	10.0	360.0
PRODUCTION	7 7/8	360.0	7,200.0

Zone Statuses

Zone	Status Date	Status	Job
NIORARA	2/22/1985	PR	DRILLING/COMPLETION - ORIGI...
CODELL	2/22/1985	PR	DRILLING/COMPLETION - ORIGI...
CODELL	9/8/2001	PR	RE-FRAC, 8/28/2001 00:00
CODELL	11/4/2011	PR	TRI-FRAC, 8/19/2011 06:00

Casing Strings

Casing Description	Run Date	String OD (in)	String Wt (lbs/ft)	String Grade	Top (ftKB)	Set Depth (ftKB)
Surface	12/28/1984	8 5/8	24.00	J-55	10.0	348.0
Production	1/4/1985	4 1/2	11.60		10.0	7,183.0

Cement

Description	Top (ftKB)	Btm (ftKB)
SURFACE CASING CEMENT	10.0	348.0
PRODUCTION CASING CEMENT	6,550.0	7,183.0

Tubing Components

Item Description	OD (in)	Wt (lbs/ft)	Grade	Jts	Len (ft)
EUE 8rd Tubing	2 3/8	4.70	J-55	225	7,045.42
Seat Nipple	2 3/8	4.70	N-80	1	1.10
Notched collar	3 1/16	4.70	J-55	1	0.42

Perforation Data

Zone	Bnch/Stg	Entered Shot Total	Top (ftKB)	Btm (ftKB)	Date
NIORARA-CODE...		15	6,860.0	7,083.0	1/20/1985
CODELL, ORIGINA...		40	7,070.0	7,080.0	8/31/2001
CODELL, ORIGINA...		40	7,071.0	7,081.0	8/24/2011

Stimulations & Treatments

Bnch/...	Date	Zone	Primary Job Type
	1/25/1985	NIORARA-CODELL, ORIGINAL HOLE	DRILLING/COMPLETION - ORIGINAL

Comment

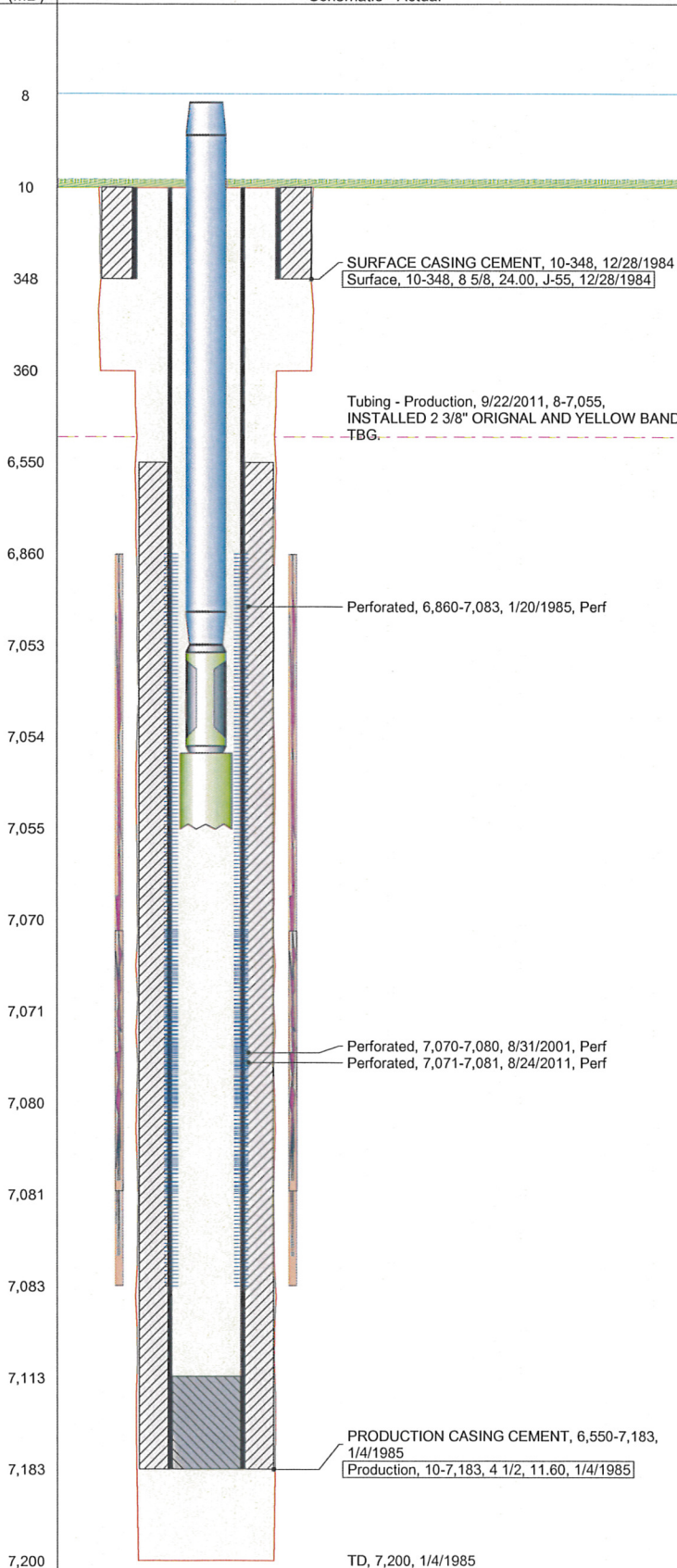
Total Add Amount	V (pumped) (gal)	V (slurry) (gal)	V (gas) (mcf)
Proppant 615000 lb; Proppant INTERPROP 15000 lb; Proppant 100 MESH 10000 lb		139734	

Avg Treat Pressure (psi)	Max Treat Pressure (psi)	Avg Treat Rate (bbl/min)	Max Treat Rate (bbl/min)
4,800.0		3.20	

Bnch/...	Date	Zone	Primary Job Type
	9/6/2001	CODELL, ORIGINAL HOLE	RE-FRAC

Comment

Total Add Amount	V (pumped) (gal)	V (slurry) (gal)	V (gas) (mcf)
Proppant 260380 lb		122304	
Avg Treat Pressure (psi)	Max Treat Pressure (psi)	Avg Treat Rate (bbl/min)	Max Treat Rate (bbl/min)
3,663.0		5.30	



ne: DINNER 01-02

Well Config: VERTICAL - ORIGINAL HOLE, 3/12/2012 1:29:24 PM

Schematic - Actual

