

Well Name: OCOMA C17-14

Well Config: VERTICAL - ORIGINAL HOLE, 3/12/2012 1:14:04 PM

## Well Header

API	Business Unit		Spud Date		Well Configuration Type	
05-123-13512	WATTENBERG		6/20/1987		VERTICAL	
Orig KB Elev (ft)	KB - GL / ...	Quarter Quarter	Sec/Abs	Twn/Sur...	Range	P & A Date
4,731.00	10	SESW	17	4N	64W	
Comment						

## Directions To Well

WCR 51 & 44, E. 0.5, N. 150' TO TANK BATTERY AND NW. INTO.

## Current PBTD (ftKB)

ORIGINAL HOLE - 7039.5

## Bottom Hole Location

North-South Distance (ft)	From N or S Line	East-West Distance (ft)	From E or W Line

## PBTDs

Date	Depth (ftKB)	Method	Comment
6/25/1987	7,052.0	CASING TALLY	LATCH DOWN COLLAR
6/30/1987	7,002.0	CASED HOLE LOG	DEPTH LOGGER

## Wellbore Sections

Section	Size (in)	Act Top (ftKB)	Act Btm (ftKB)
SURFACE	12 1/4	10.0	336.0
PRODUCTION	7 7/8	336.0	7,065.0

## Zone Statuses

Zone	Status Date	Status	Job
NIOBRARA	7/28/1987	PR	DRILLING/COMPLETION - ORIGI...
CODELL	7/28/1987	PR	DRILLING/COMPLETION - ORIGI...
CODELL	1/30/2006	PR	RE-FRAC, 1/30/2006 00:00
CODELL	10/3/2011	SI	RE-FRAC, 9/30/2011 14:00
NIOBRARA	10/28/2011	PR	RE-FRAC, 9/30/2011 14:00
CODELL	12/5/2011	PR	RE-FRAC, 9/30/2011 14:00
NIOBRARA	12/5/2011	PR	RE-FRAC, 9/30/2011 14:00

## Casing Strings

Casing Description	Run Date	String OD (in)	String Wt (lbs/ft)	String Grade	Top (ftKB)	Set Depth (ftKB)
Surface	6/20/1987	8 5/8	24.00		10.0	336.0
Production	6/25/1987	4 1/2	15.10	N80	10.0	7,060.0

## Cement

Description	Top (ftKB)	Btm (ftKB)
SURFACE CASING CEMENT	10.0	336.0
PRODUCTION CASING CEMENT	6,070.0	7,060.0

## Tubing Components

Item Description	OD (in)	Wt (lbs/ft)	Grade	Jts	Len (ft)
EUE 8rd Tubing	2 3/8	4.70	J-55	222	6,885.40
Notch Seat Nipple	2 3/8	4.70	N-80	1	1.20

## Perforation Data

Zone	Bnch/Stg	Entered Shot Total	Top (ftKB)	Btm (ftKB)	Date
NIOBRARA, ORIGI...	A	32	6,704.0	6,720.0	10/5/2011
NIOBRARA, ORIGI...	A	4	6,707.0	6,720.0	6/30/1987
NIOBRARA, ORIGI...	B	6	6,772.0	6,826.0	6/30/1987
NIOBRARA, ORIGI...	B	32	6,792.0	6,808.0	10/5/2011
CODELL, ORIGINA...		56	6,910.0	6,924.0	1/14/2006
CODELL, ORIGINA...		5	6,912.0	6,919.0	6/30/1987

## Stimulations & Treatments

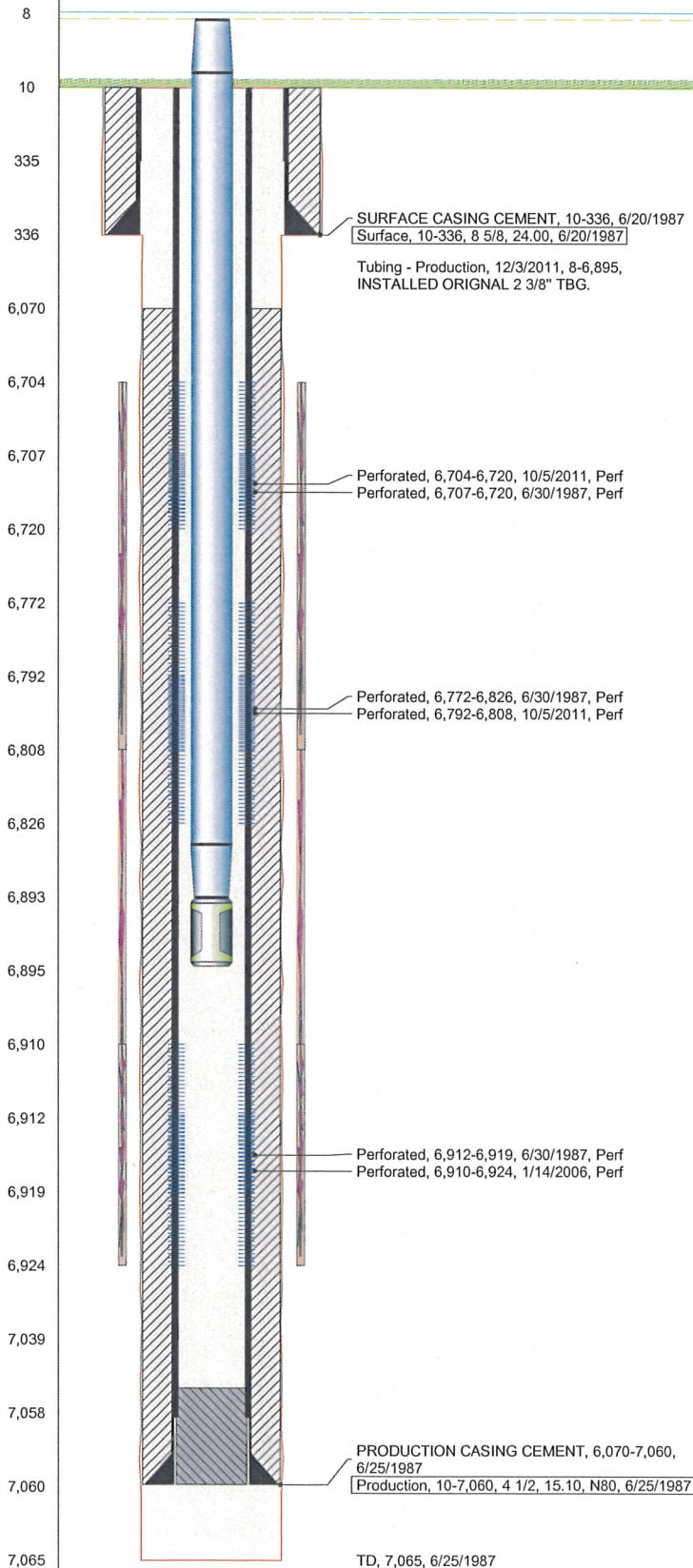
Bnch/...	Date	Zone	Primary Job Type
	7/1/1987	NIOBRARA-CODELL, ORIGINAL HOLE	DRILLING/COMPLETION - ORIGINAL

## Comment

## CODELL/NIO FRAC'D LIMITED ENTRY

Total Add Amount	V (pumped) (gal)	V (slurry) (gal)	V (gas) (mcf)
Proppant Resin Coated Sand (Santrol) 10000 lb; Proppant 185600 lb; Proppant 100 MESH 12000 lb		84420	

Avg Treat Pressure (psi)	Max Treat Pressure (psi)	Avg Treat Rate (bbl/min)	Max Treat Rate (bbl/min)
5,500.0	5,900.0	30.00	30.00



Well Name: OCOMA C17-14

Well Config: VERTICAL - ORIGINAL HOLE, 3/12/2012 1:14:04 PM

## Stimulations & Treatments

Bnch/...	Date	Zone	Primary Job Type	
	1/24/2006	CODELL, ORIGINAL HOLE	RE-FRAC	
Comment				
Total Add Amount		V (pumped) (gal)	V (slurry) (gal)	V (gas) (mcf)
Proppant Ottawa 246220 lb			129276	
Avg Treat Pressure (psi)	Max Treat Pressure (psi)	Avg Treat Rate (bbl/min)	Max Treat Rate (bbl/min)	
5,331.0	6,617.0	14.00	14.30	
Bnch/...	Date	Zone	Primary Job Type	
	10/27/2011	NIOBRARA, ORIGINAL HOLE	RE-FRAC	
Comment				
(NIOBRARA RF) - BREAK 4623 @ 3.9, ISIP 3807, 5 MIN 2861. TREATMENT WENT WELL, NO ISSUES TO REPORT.				
Total Add Amount		V (pumped) (gal)	V (slurry) (gal)	V (gas) (mcf)
Proppant Ottawa 249520.795 lb		154183	165521	
Avg Treat Pressure (psi)	Max Treat Pressure (psi)	Avg Treat Rate (bbl/min)	Max Treat Rate (bbl/min)	
4,006.0	4,879.0	35.30	40.90	

## Other In Hole

Run Date	Description	OD (in)	Top (ftKB)	Btm (ftKB)

## Logs

Date	Type	Top (ftKB)	Btm (ftKB)
6/25/1987	COMPENSATED NEUTRON	3,490.0	7,004.0
6/25/1987	INDUCTION	336.0	7,004.0
6/30/1987	CEMENT BOND	5,750.0	6,994.0

