

## The Road to Excellence Starts with Safety

Sold To #: 304535	Ship To #: 2904435	Quote #:	Sales Order #: 9229295
Customer: PDC ENERGY EBUS	Customer Rep: SAILORS, CHAD		
Well Name: Monson	Well #: 24-20D	API/UWI #: 05-123-21311	
Field: Wattenberg	City (SAP): GREELEY	County/Parish: Weld	State: Colorado
Job Purpose: Recement Service			
Well Type: Development Well	Job Type: Recement Service		
Sales Person: FLING, MATTHEW	Srv Supervisor: FANTASIA, JOSEPH	MBU ID Emp #: 485445	

## Job Personnel

HES Emp Name	Exp Hrs	Emp #	HES Emp Name	Exp Hrs	Emp #	HES Emp Name	Exp Hrs	Emp #
BANUELOS, GUADALUPE	6.0	372277	BRICKER, DANIEL Z	6.0	475710	FANTASIA, JOSEPH Brandon	6.0	485445
JEWELL, WILLIAM Uris	6.0	503358						

## Equipment

HES Unit #	Distance-1 way	HES Unit #	Distance-1 way	HES Unit #	Distance-1 way	HES Unit #	Distance-1 way
10241536C	33 mile	11036298	33 mile	11142998	33 mile	11341988C	33 mile
11633848	33 mile						

## Job Hours

Date	On Location Hours	Operating Hours	Date	On Location Hours	Operating Hours	Date	On Location Hours	Operating Hours
1-25-2012	6	4						
TOTAL			Total is the sum of each column separately					

## Job

Formation Name	Formation Depth (MD)	Top	Bottom	Form Type	Job depth MD	Job Depth TVD	Water Depth	Perforation Depth (MD)	From	To
				BHST	3600. ft	3600. ft				

## Job Times

Date	Time	Time Zone
25 - Jan - 2012	02:00	MST
25 - Jan - 2012	06:00	MST
25 - Jan - 2012	08:00	MST
25 - Jan - 2012	11:15	MST
25 - Jan - 2012	12:00	MST

## Well Data

Description	New / Used	Max pressure psig	Size in	ID in	Weight lbm/ft	Thread	Grade	Top MD ft	Bottom MD ft	Top TVD ft	Bottom TVD ft
Open Hole				12.				449.	3600.	.	.
Production Casing	Used		4.5	4.052	10.5		J-55	.	8450.		
Surface Casing	Used		8.625	8.097	24.		J-55	.	449.		
TUBING	Unknown		1.25	.671	3.02			.	3600.		

## Tools and Accessories

Type	Size	Qty	Make	Depth	Type	Size	Qty	Make	Depth	Type	Size	Qty	Make
Guide Shoe					Packer					Top Plug			
Float Shoe					Bridge Plug					Bottom Plug			
Float Collar					Retainer					SSR plug set			
Insert Float										Plug Container			
Stage Tool										Centralizers			

## Miscellaneous Materials

Gelling Agt	Conc	Surfactant	Conc	Acid Type	Qty	Conc	%
Treatment Fld	Conc	Inhibitor	Conc	Sand Type	Size	Qty	

## Fluid Data

Stage/Plug #: 1

Fluid #	Stage Type	Fluid Name	Qty	Qty uom	Mixing Density lbm/gal	Yield ft <sup>3</sup> /sk	Mix Fluid Gal/sk	Rate bbl/min	Total Mix Fluid Gal/sk
1	ClayWeb Water Spacer		10.00	bbl	8.33	.0	.0	2.0	
2	MUD FLUSH III	MUD FLUSH III - SBM (528788)	12.00	bbl	8.4	.0	.0	2.0	
3	ClayWeb Water Spacer		10.00	bbl	8.33	.0	.0	2.0	
59.525 gal/Mgal		CLA-WEB - TOTE (101985045)							
4	Varicem 12#	VARICEM (TM) CEMENT (452009)	395.0	sacks	12.	2.18	12.34	2.0	12.34
12.34 Gal		FRESH WATER							
5	Varicem 13#	VARICEM (TM) CEMENT (452009)	190.0	sacks	13.	1.71	8.84	2.0	8.84
8.84 Gal		FRESH WATER							
<b>Calculated Values</b>		<b>Pressures</b>		<b>Volumes</b>					
Displacement		Shut In: Instant		Lost Returns	0	Cement Slurry	208	Pad	
Top Of Cement		5 Min		Cement Returns	40	Actual Displacement	2.5	Treatment	
Frac Gradient		15 Min		Spacers	32	Load and Breakdown		Total Job	242.5
<b>Rates</b>									
Circulating	2	Mixing	2	Displacement	2	Avg. Job	2		
Cement Left In Pipe	Amount	0 ft	Reason	Shoe Joint					
Frac Ring # 1 @	ID	Frac ring # 2 @	ID	Frac Ring # 3 @	ID	Frac Ring # 4 @	ID		
The Information Stated Herein Is Correct				Customer Representative Signature					

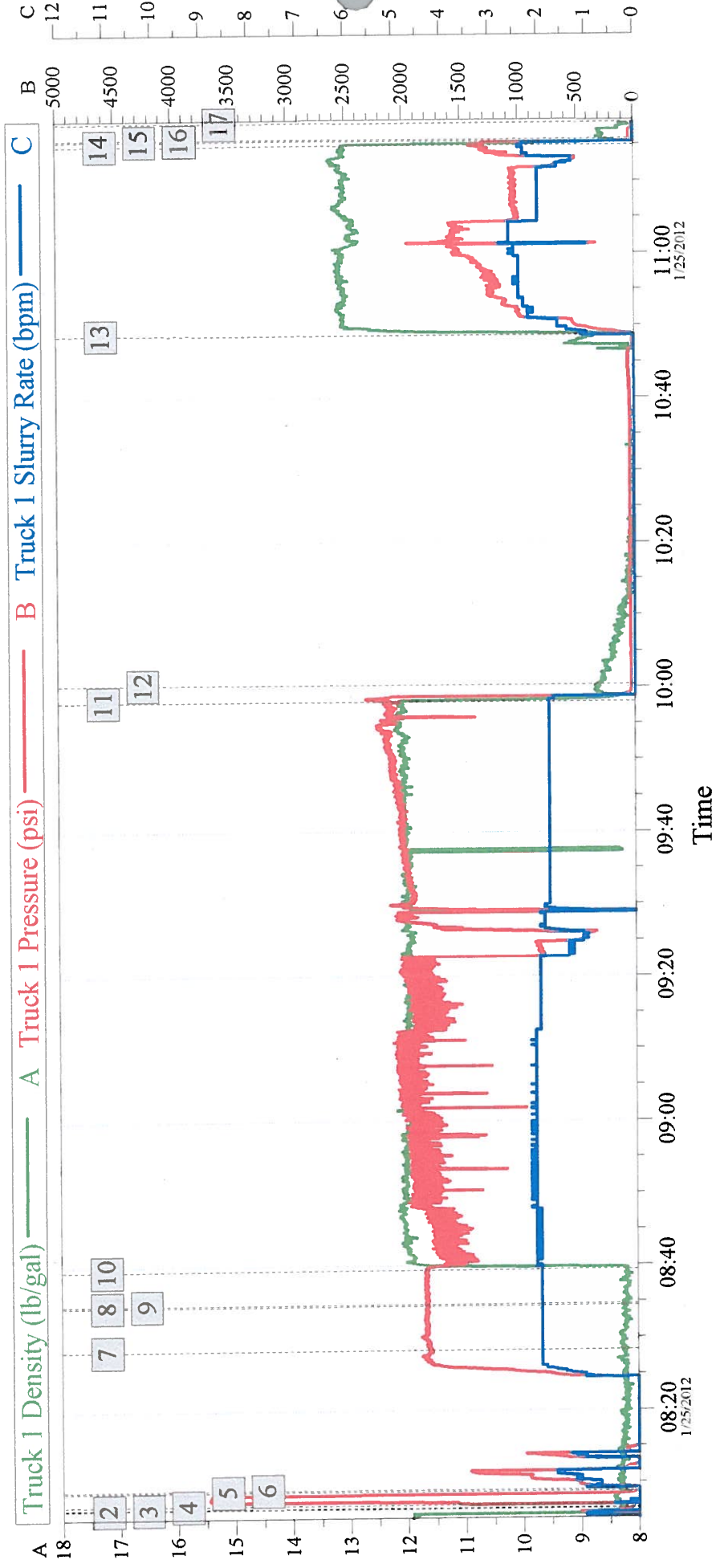
**The Road to Excellence Starts with Safety**

Sold To #: 304535	Ship To #: 2904435	Quote #:	Sales Order #: 9229295
Customer: PDC ENERGY EBUS		Customer Rep: SAILORS, CHAD	
Well Name: Monson	Well #: 24-20D	API/UWI #: 05-123-21311	
Field: Wattenberg	City (SAP): GREELEY	County/Parish: Weld	State: Colorado
<b>Legal Description:</b>			
Lat: N 0 deg. OR N 0 deg. 0 min. 0 secs.		Long: E 0 deg. OR E 0 deg. 0 min. 0 secs.	
Contractor:		Rig/Platform Name/Num:	
Job Purpose: Recement Service		Ticket Amount:	
Well Type: Development Well		Job Type: Recement Service	
Sales Person: FLING, MATTHEW		Srv Supervisor: FANTASIA, JOSEPH	MBU ID Emp #: 485445

Activity Description	Date/Time	Cht #	Rate bbl/min	Volume bbl		Pressure psig		Comments
				Stage	Total	Tubing	Casing	
Arrive at Location from Service Center	01/25/2012 06:00							
Assessment Of Location Safety Meeting	01/25/2012 06:15							
Start Job	01/25/2012 08:06							
Test Lines	01/25/2012 08:06							PRESSURE TEST LINES TO 3500 PSI
Pump Spacer 1	01/25/2012 08:08		2	10			1720.0	10 BBLS CLAYFIX WATER
Pump Spacer 2	01/25/2012 08:28		2	12			1800.0	12 BBLS MUDFLUSH
Pump Spacer 1	01/25/2012 08:34		2	10			1820.0	10 BBLS CLAYFIX WATER
Pump Lead Cement	01/25/2012 08:39		2	154			1971.0	395 SKS SURFACE VARICEM MIXED AT 12 PPG USING SUPPLIED WATER
Pump Displacement	01/25/2012 09:57		2	1.5			1940.0	1.5 BBLS SUPPLIED WATER
Shutdown	01/25/2012 10:00							RIG PULLS 80 JOINTS
Pump Tail Cement	01/25/2012 10:48		2	54			1100.0	190 SKS SURFACE VARICEM MIXED AT 13 PPG USING SUPPLIED WATER. 15 BBLS INTO 54 BBLS CEMENT REACHED SURFACE. APPROX 40 BBLS OF CEMENT TO SURFACE
Pump Displacement	01/25/2012 11:14		2	1			240.0	
End Job	01/25/2012 11:15							



# PDC MONSON 24-20D RECEMENT



## Global Event Log

1	Starting Job	07:48:16	2	Break Formation	08:06:22	3	Start Job	08:06:27
4	Test Lines	08:06:51	5	Pump Spacer 1	08:08:47	6	Pump Spacer 1	08:09:01
7	Pump Spacer 2	08:28:21	8	Clean Lines	08:34:27	9	Pump Spacer 1	08:34:36
10	Pump Lead Cement	08:39:24	11	Pump Displacement	09:57:59	12	Shutdown	10:00:20
13	Pump Tail Cement	10:48:41	14	Pump Displacement	11:14:51	15	Shutdown	11:15:31
16	End Job	11:15:41	17	Ending Job	11:17:58			

Customer: PDC

Job Date: 25-Jan-2012

Sales Order #: 9229295

Well Description: 1.25" ANNULAR FILL

UWI: