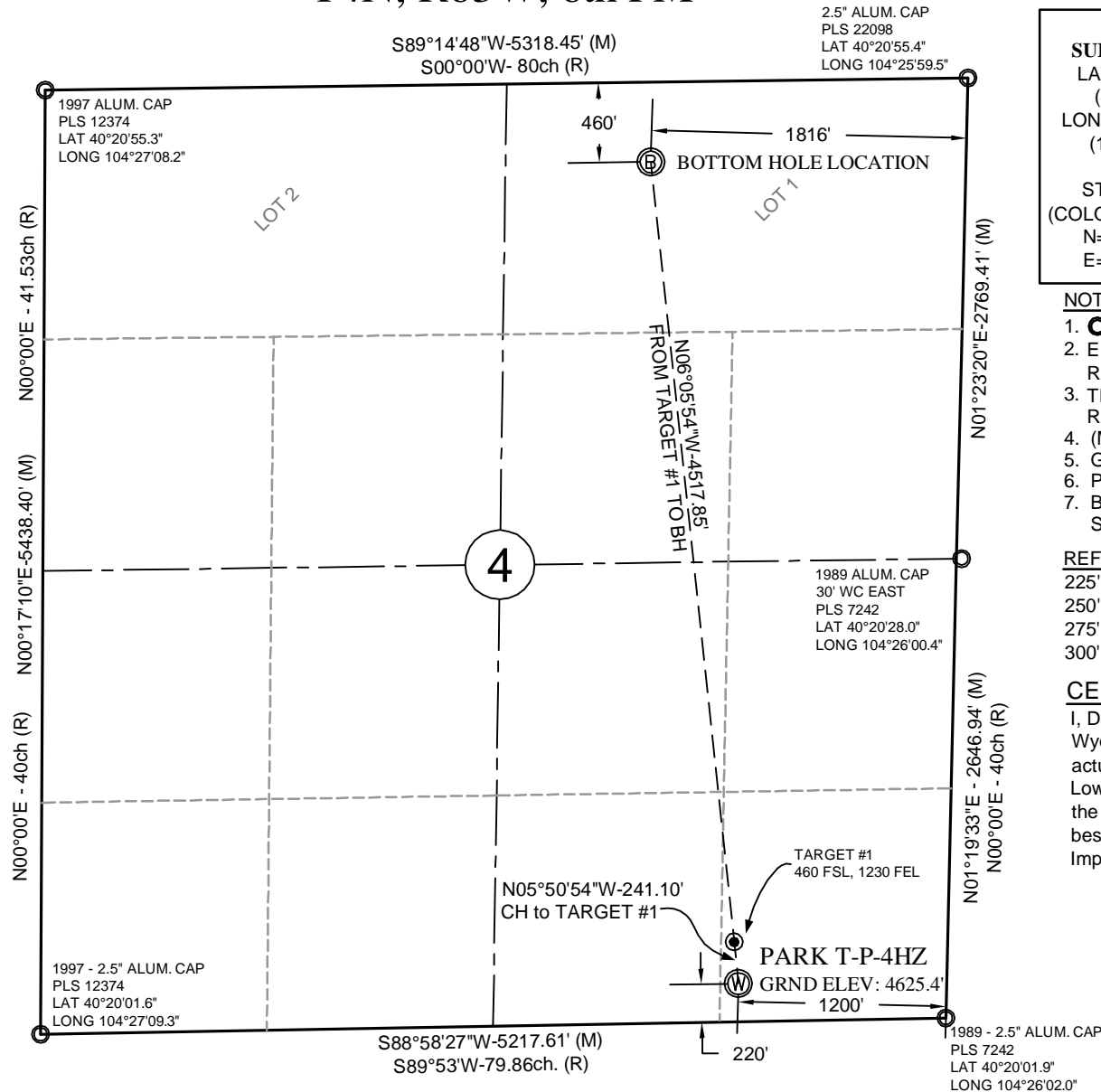


T4N, R63W, 6th PM



NAD83 SURFACE LOC.	NAD83 TARGET #1	NAD83 BOTTOM HOLE LOC.
LAT 40°20'04.0" (40.334444) LONG 104°26'17.4" (104.438163)	LAT 40°20'06.4" (40.335103) LONG 104°26'17.7" (104.438241)	LAT 40°20'50.8" (40.347446) LONG 104°26'23.2" (104.439769)
STATE PLANE (COLORADO NORTH) N=1,366,451 ft E=3,296,011 ft	STATE PLANE (COLORADO NORTH) N=1,366,691 ft E=3,295,987 ft	STATE PLANE (COLORADO NORTH) N=1,371,182 ft E=3,295,507 ft

NOTES:

- INDICATES FOUND MONUMENT AS DESCRIBED
- ELEVATIONS BASED ON NAVD88 DERIVED FROM STATIC REDUCTION CALCULATED FROM GEOID 03.
- THE BASIS OF BEARING IS NAD83 GRID DERIVED FROM STATIC REDUCTION
- (M) = MEASURED DATA; (R) GLO PLAT DATA OF RECORD
- GPS OPERATOR: DAVE FEHRINGER
- PDOP VALUE = 2.1
- BEARING FROM SURFACE LOCATION TO SE CORNER SECTION 4:
S80°34'22"E - 1211.85'

REFERENCE STAKES:

225' NORTH - 4618.8'
250' NORTH - 4618.1'
275' WEST - 4626.0'
300' WEST - 4626.0'

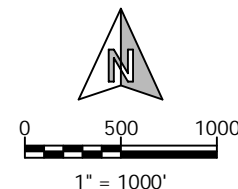
CERTIFICATE OF SURVEYOR

I, David A. Fehrer, of Fremont Engineering & Surveying, from Lander, Wyoming hereby certify that this map was made from notes taken during an actual survey by myself on FEBRUARY 23, 2012, for and on behalf of LowhamWalsh and Bonanza Creek Energy. That this plat correctly shows the drilling location of BONANZA CREEK ENERGY, PARK T-P-4HZ to the best of my knowledge and is not to be used as a Boundary Survey or Improvement Survey Plat.



205 S. THIRD ST.
LANDER, WY 82520
(307) 335-8466 (O)
(307) 335-7343 (F)

Drawn By: DAF
Checked By: ATS
Date: 3/1/2012
Revision: #1 - PBHL adjustment
Date: 3/8/12
Sheet: 1 of 7



BONANZA CREEK ENERGY
PARK T-P-4HZ
WELL LOCATION CERTIFICATE
220' FSL, 1200' FEL,
SE¼SE¼, SECTION 4
T4N, R63W, 6th PM
WELD COUNTY, COLORADO