

BONANZA CREEK ENERGY OPERATING

Well Name: **NORTH PLATTE X-D-35HZ**

Surface Location: NORTH PLATTE X-D-35HZ SEC.36-5N-63W
North American Datum 1983 , US State Plane 1983 , Colorado Northern Zone

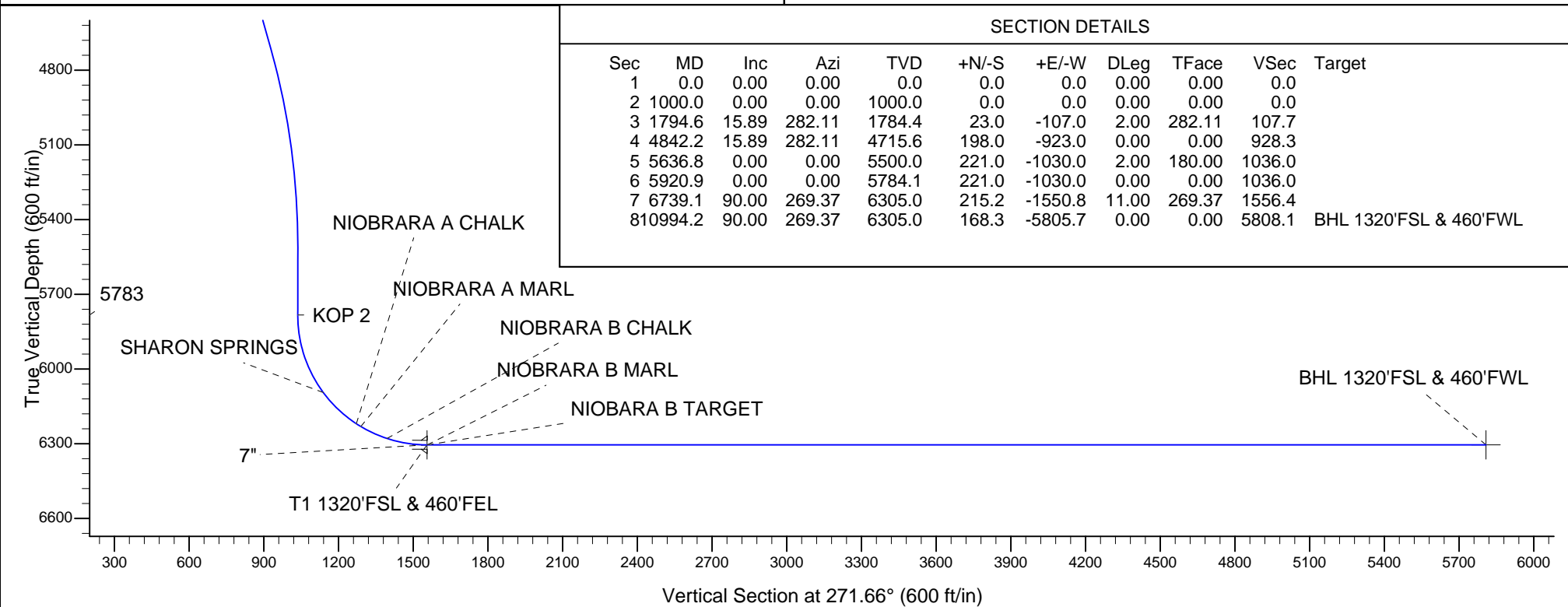
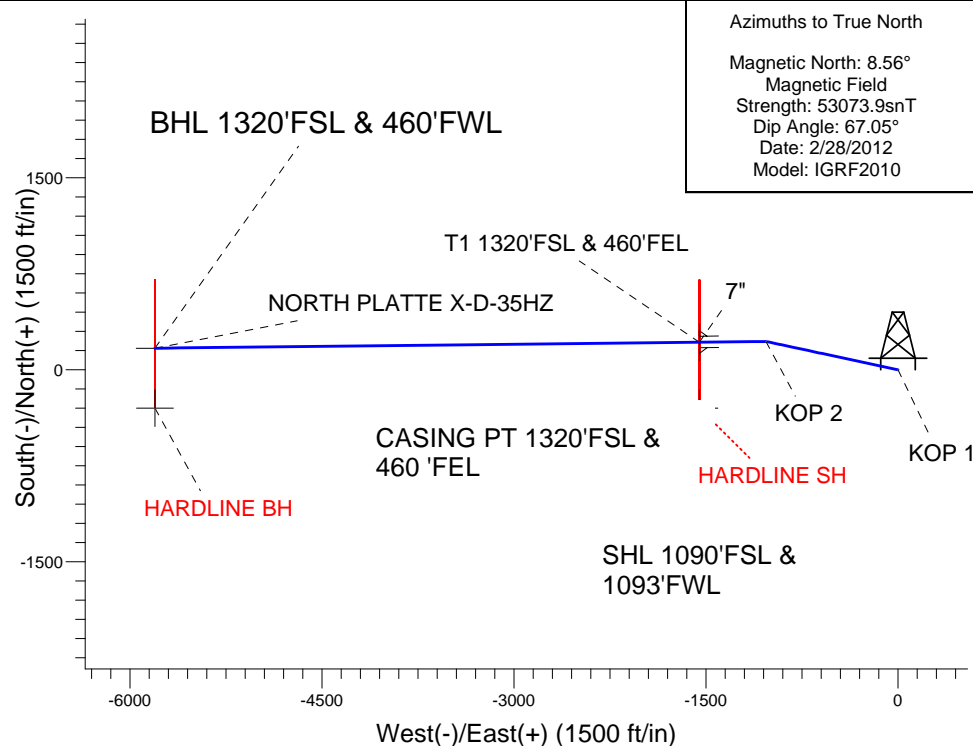
Ground Elevation: 4540.0

+N/-S	+E/-W	Northing	Easting	Latitude	Longitude	Slot
0.0	0.0	1372998.88	3309304.49	40.351970	-104.390190	
KB 15' RKB @ 4555.0ft (KB 15')						

WELLBORE TARGET DETAILS (LAT/LONG)

Name	TVD	+N/-S	+E/-W	Latitude	Longitude	Shape
HARDLINE BH 2.0	-300.0	-300.0	-5805.0	40.351145	-104.411017	Polygon
HARDLINE SH 2.0	-300.0	-1550.0	-5805.0	40.351146	-104.395751	Polygon
BHL 1320'FSL & 460'FWL	6305.0	168.3	-5805.7	40.352430	-104.411020	Point
T1 1320'FSL & 460'FEL	6305.0	215.0	-1549.7	40.352560	-104.395750	Point

NORTH PLATTE X-D-35HZ SEC.36-5N-63W
NORTH PLATTE X-D-35HZ
PLAN 1 (FEB 28 2012) PROG 2/23
13:43, February 28 2012





Directional

BONANZA CREEK ENERGY OPERATING

SEC.36-T5N-R63W

NORTH PLATTE X-D-35HZ SEC.36-5N-63W

NORTH PLATTE X-D-35HZ

Wellbore #1

Plan: PLAN 1 (FEB 28 2012) PROG 2/23

Standard Planning Report

28 February, 2012

Plan Sections										
Measured Depth (ft)	Inclination (°)	Azimuth (°)	Vertical Depth (ft)	+N/-S (ft)	+E/-W (ft)	Dogleg Rate (°/100ft)	Build Rate (°/100ft)	Turn Rate (°/100ft)	TFO (°)	Target
0.0	0.00	0.00	0.0	0.0	0.0	0.00	0.00	0.00	0.00	
1,000.0	0.00	0.00	1,000.0	0.0	0.0	0.00	0.00	0.00	0.00	
1,794.6	15.89	282.11	1,784.4	23.0	-107.0	2.00	2.00	0.00	282.11	
4,842.2	15.89	282.11	4,715.6	198.0	-923.0	0.00	0.00	0.00	0.00	
5,636.8	0.00	0.00	5,500.0	221.0	-1,030.0	2.00	-2.00	0.00	180.00	
5,920.9	0.00	0.00	5,784.1	221.0	-1,030.0	0.00	0.00	0.00	0.00	
6,739.1	90.00	269.37	6,305.0	215.2	-1,550.8	11.00	11.00	0.00	269.37	
10,994.2	90.00	269.37	6,305.0	168.3	-5,805.7	0.00	0.00	0.00	0.00	BHL 1320'FSL & 46

Database:	Landmark	Local Co-ordinate Reference:	Well NORTH PLATTE X-D-35HZ
Company:	BONANZA CREEK ENERGY OPERATING	TVD Reference:	RKB @ 4555.0ft (KB 15')
Project:	SEC.36-T5N-R63W	MD Reference:	RKB @ 4555.0ft (KB 15')
Site:	NORTH PLATTE X-D-35HZ SEC.36-5N-63W	North Reference:	True
Well:	NORTH PLATTE X-D-35HZ	Survey Calculation Method:	Minimum Curvature
Wellbore:	Wellbore #1		
Design:	PLAN 1 (FEB 28 2012) PROG 2/23		

Planned Survey									
Measured Depth (ft)	Inclination (°)	Azimuth (°)	Vertical Depth (ft)	+N/-S (ft)	+E/-W (ft)	Vertical Section (ft)	Dogleg Rate (°/100ft)	Build Rate (°/100ft)	Turn Rate (°/100ft)
0.0	0.00	0.00	0.0	0.0	0.0	0.0	0.00	0.00	0.00
2.0	0.00	0.00	2.0	0.0	0.0	0.0	0.00	0.00	0.00
HARDLINE BH - HARDLINE SH									
100.0	0.00	0.00	100.0	0.0	0.0	0.0	0.00	0.00	0.00
200.0	0.00	0.00	200.0	0.0	0.0	0.0	0.00	0.00	0.00
300.0	0.00	0.00	300.0	0.0	0.0	0.0	0.00	0.00	0.00
400.0	0.00	0.00	400.0	0.0	0.0	0.0	0.00	0.00	0.00
500.0	0.00	0.00	500.0	0.0	0.0	0.0	0.00	0.00	0.00
600.0	0.00	0.00	600.0	0.0	0.0	0.0	0.00	0.00	0.00
700.0	0.00	0.00	700.0	0.0	0.0	0.0	0.00	0.00	0.00
800.0	0.00	0.00	800.0	0.0	0.0	0.0	0.00	0.00	0.00
900.0	0.00	0.00	900.0	0.0	0.0	0.0	0.00	0.00	0.00
1,000.0	0.00	0.00	1,000.0	0.0	0.0	0.0	0.00	0.00	0.00
KOP 1									
1,100.0	2.00	282.11	1,100.0	0.4	-1.7	1.7	2.00	2.00	0.00
1,200.0	4.00	282.11	1,199.8	1.5	-6.8	6.9	2.00	2.00	0.00
1,300.0	6.00	282.11	1,299.5	3.3	-15.3	15.4	2.00	2.00	0.00
1,400.0	8.00	282.11	1,398.7	5.8	-27.3	27.4	2.00	2.00	0.00
1,500.0	10.00	282.11	1,497.5	9.1	-42.6	42.8	2.00	2.00	0.00
1,600.0	12.00	282.11	1,595.6	13.1	-61.2	61.6	2.00	2.00	0.00
1,700.0	14.00	282.11	1,693.1	17.9	-83.2	83.7	2.00	2.00	0.00
1,794.6	15.89	282.11	1,784.4	23.0	-107.0	107.7	2.00	2.00	0.00
1,800.0	15.89	282.11	1,789.6	23.3	-108.5	109.1	0.00	0.00	0.00
1,900.0	15.89	282.11	1,885.8	29.0	-135.3	136.1	0.00	0.00	0.00
2,000.0	15.89	282.11	1,982.0	34.8	-162.0	163.0	0.00	0.00	0.00
2,100.0	15.89	282.11	2,078.2	40.5	-188.8	189.9	0.00	0.00	0.00
2,200.0	15.89	282.11	2,174.4	46.3	-215.6	216.8	0.00	0.00	0.00
2,300.0	15.89	282.11	2,270.5	52.0	-242.4	243.8	0.00	0.00	0.00
2,400.0	15.89	282.11	2,366.7	57.7	-269.1	270.7	0.00	0.00	0.00
2,500.0	15.89	282.11	2,462.9	63.5	-295.9	297.6	0.00	0.00	0.00
2,600.0	15.89	282.11	2,559.1	69.2	-322.7	324.5	0.00	0.00	0.00
2,700.0	15.89	282.11	2,655.2	75.0	-349.4	351.5	0.00	0.00	0.00
2,800.0	15.89	282.11	2,751.4	80.7	-376.2	378.4	0.00	0.00	0.00
2,900.0	15.89	282.11	2,847.6	86.5	-403.0	405.3	0.00	0.00	0.00
3,000.0	15.89	282.11	2,943.8	92.2	-429.8	432.3	0.00	0.00	0.00
3,100.0	15.89	282.11	3,040.0	98.0	-456.5	459.2	0.00	0.00	0.00
3,200.0	15.89	282.11	3,136.1	103.7	-483.3	486.1	0.00	0.00	0.00
3,300.0	15.89	282.11	3,232.3	109.4	-510.1	513.0	0.00	0.00	0.00
3,354.8	15.89	282.11	3,285.0	112.6	-524.7	527.8	0.00	0.00	0.00
PARKMAN									
3,400.0	15.89	282.11	3,328.5	115.2	-536.9	540.0	0.00	0.00	0.00
3,500.0	15.89	282.11	3,424.7	120.9	-563.6	566.9	0.00	0.00	0.00
3,600.0	15.89	282.11	3,520.9	126.7	-590.4	593.8	0.00	0.00	0.00
3,700.0	15.89	282.11	3,617.0	132.4	-617.2	620.7	0.00	0.00	0.00
3,800.0	15.89	282.11	3,713.2	138.2	-643.9	647.7	0.00	0.00	0.00
3,900.0	15.89	282.11	3,809.4	143.9	-670.7	674.6	0.00	0.00	0.00
4,000.0	15.89	282.11	3,905.6	149.7	-697.5	701.5	0.00	0.00	0.00
4,100.0	15.89	282.11	4,001.7	155.4	-724.3	728.5	0.00	0.00	0.00
4,103.4	15.89	282.11	4,005.0	155.6	-725.2	729.4	0.00	0.00	0.00
SUSSEX									
4,200.0	15.89	282.11	4,097.9	161.1	-751.0	755.4	0.00	0.00	0.00
4,300.0	15.89	282.11	4,194.1	166.9	-777.8	782.3	0.00	0.00	0.00
4,400.0	15.89	282.11	4,290.3	172.6	-804.6	809.2	0.00	0.00	0.00
4,500.0	15.89	282.11	4,386.5	178.4	-831.3	836.2	0.00	0.00	0.00

Database:	Landmark	Local Co-ordinate Reference:	Well NORTH PLATTE X-D-35HZ
Company:	BONANZA CREEK ENERGY OPERATING	TVD Reference:	RKB @ 4555.0ft (KB 15')
Project:	SEC.36-T5N-R63W	MD Reference:	RKB @ 4555.0ft (KB 15')
Site:	NORTH PLATTE X-D-35HZ SEC.36-5N-63W	North Reference:	True
Well:	NORTH PLATTE X-D-35HZ	Survey Calculation Method:	Minimum Curvature
Wellbore:	Wellbore #1		
Design:	PLAN 1 (FEB 28 2012) PROG 2/23		

Planned Survey									
Measured Depth (ft)	Inclination (°)	Azimuth (°)	Vertical Depth (ft)	+N/-S (ft)	+E/-W (ft)	Vertical Section (ft)	Dogleg Rate (°/100ft)	Build Rate (°/100ft)	Turn Rate (°/100ft)
4,600.0	15.89	282.11	4,482.6	184.1	-858.1	863.1	0.00	0.00	0.00
4,700.0	15.89	282.11	4,578.8	189.9	-884.9	890.0	0.00	0.00	0.00
4,800.0	15.89	282.11	4,675.0	195.6	-911.7	916.9	0.00	0.00	0.00
4,842.2	15.89	282.11	4,715.6	198.0	-923.0	928.3	0.00	0.00	0.00
4,900.0	14.74	282.11	4,771.3	201.2	-937.9	943.3	2.00	-2.00	0.00
5,000.0	12.74	282.11	4,868.5	206.2	-961.1	966.7	2.00	-2.00	0.00
5,100.0	10.74	282.11	4,966.4	210.5	-981.0	986.7	2.00	-2.00	0.00
5,200.0	8.74	282.11	5,064.9	214.0	-997.5	1,003.3	2.00	-2.00	0.00
5,300.0	6.74	282.11	5,164.0	216.9	-1,010.7	1,016.5	2.00	-2.00	0.00
5,400.0	4.74	282.11	5,263.5	218.9	-1,020.4	1,026.4	2.00	-2.00	0.00
5,500.0	2.74	282.11	5,363.3	220.3	-1,026.8	1,032.8	2.00	-2.00	0.00
5,600.0	0.74	282.11	5,463.2	221.0	-1,029.8	1,035.7	2.00	-2.00	0.00
5,636.8	0.00	0.00	5,500.0	221.0	-1,030.0	1,036.0	2.00	-2.00	0.00
5,700.0	0.00	0.00	5,563.2	221.0	-1,030.0	1,036.0	0.00	0.00	0.00
5,800.0	0.00	0.00	5,663.2	221.0	-1,030.0	1,036.0	0.00	0.00	0.00
5,900.0	0.00	0.00	5,763.2	221.0	-1,030.0	1,036.0	0.00	0.00	0.00
5,920.0	0.00	0.00	5,783.2	221.0	-1,030.0	1,036.0	0.00	0.00	0.00
KOP 2									
5,920.9	0.00	0.00	5,784.1	221.0	-1,030.0	1,036.0	0.00	0.00	0.00
6,000.0	8.70	269.37	5,862.9	220.9	-1,036.0	1,042.0	11.00	11.00	0.00
6,100.0	19.70	269.37	5,959.7	220.7	-1,060.5	1,066.4	11.00	11.00	0.00
6,200.0	30.70	269.37	6,050.1	220.2	-1,103.0	1,108.9	11.00	11.00	0.00
6,254.0	36.64	269.37	6,095.0	219.9	-1,132.9	1,138.8	11.00	11.00	0.00
SHARON SPRINGS									
6,300.0	41.70	269.37	6,130.6	219.5	-1,162.0	1,167.8	11.00	11.00	0.00
6,400.0	52.70	269.37	6,198.5	218.7	-1,235.2	1,241.0	11.00	11.00	0.00
6,437.3	56.80	269.37	6,220.0	218.4	-1,265.7	1,271.5	11.00	11.00	0.00
NIOBRARA A CHALK									
6,458.0	59.09	269.37	6,231.0	218.2	-1,283.3	1,289.0	11.00	11.00	0.00
NIOBRARA A MARL									
6,500.0	63.70	269.37	6,251.1	217.8	-1,320.1	1,325.8	11.00	11.00	0.00
6,573.8	71.82	269.37	6,279.0	217.0	-1,388.3	1,394.0	11.00	11.00	0.00
NIOBRARA B CHALK									
6,600.0	74.70	269.37	6,286.5	216.8	-1,413.4	1,419.1	11.00	11.00	0.00
6,700.0	85.70	269.37	6,303.5	215.7	-1,511.8	1,517.4	11.00	11.00	0.00
6,737.9	89.87	269.37	6,305.0	215.3	-1,549.7	1,555.3	11.00	11.00	0.00
T1 1320'FSL & 460'FEL									
6,739.0	89.99	269.37	6,305.0	215.2	-1,550.8	1,556.3	11.00	11.00	0.00
7"									
6,739.1	90.00	269.37	6,305.0	215.2	-1,550.8	1,556.4	11.00	11.00	0.00
NIOBARA B TARGET - NIOBRARA B MARL									
6,800.0	90.00	269.37	6,305.0	214.6	-1,611.8	1,617.3	0.00	0.00	0.00
6,900.0	90.00	269.37	6,305.0	213.5	-1,711.8	1,717.2	0.00	0.00	0.00
7,000.0	90.00	269.37	6,305.0	212.4	-1,811.7	1,817.1	0.00	0.00	0.00
7,100.0	90.00	269.37	6,305.0	211.3	-1,911.7	1,917.1	0.00	0.00	0.00
7,200.0	90.00	269.37	6,305.0	210.2	-2,011.7	2,017.0	0.00	0.00	0.00
7,300.0	90.00	269.37	6,305.0	209.1	-2,111.7	2,116.9	0.00	0.00	0.00
7,400.0	90.00	269.37	6,305.0	208.0	-2,211.7	2,216.8	0.00	0.00	0.00
7,500.0	90.00	269.37	6,305.0	206.8	-2,311.7	2,316.7	0.00	0.00	0.00
7,600.0	90.00	269.37	6,305.0	205.7	-2,411.7	2,416.7	0.00	0.00	0.00
7,700.0	90.00	269.37	6,305.0	204.6	-2,511.7	2,516.6	0.00	0.00	0.00
7,800.0	90.00	269.37	6,305.0	203.5	-2,611.7	2,616.5	0.00	0.00	0.00
7,900.0	90.00	269.37	6,305.0	202.4	-2,711.7	2,716.4	0.00	0.00	0.00

Database:	Landmark	Local Co-ordinate Reference:	Well NORTH PLATTE X-D-35HZ
Company:	BONANZA CREEK ENERGY OPERATING	TVD Reference:	RKB @ 4555.0ft (KB 15')
Project:	SEC.36-T5N-R63W	MD Reference:	RKB @ 4555.0ft (KB 15')
Site:	NORTH PLATTE X-D-35HZ SEC.36-5N-63W	North Reference:	True
Well:	NORTH PLATTE X-D-35HZ	Survey Calculation Method:	Minimum Curvature
Wellbore:	Wellbore #1		
Design:	PLAN 1 (FEB 28 2012) PROG 2/23		

Planned Survey									
Measured Depth (ft)	Inclination (°)	Azimuth (°)	Vertical Depth (ft)	+N/-S (ft)	+E/-W (ft)	Vertical Section (ft)	Dogleg Rate (°/100ft)	Build Rate (°/100ft)	Turn Rate (°/100ft)
8,000.0	90.00	269.37	6,305.0	201.3	-2,811.7	2,816.3	0.00	0.00	0.00
8,100.0	90.00	269.37	6,305.0	200.2	-2,911.7	2,916.3	0.00	0.00	0.00
8,200.0	90.00	269.37	6,305.0	199.1	-3,011.7	3,016.2	0.00	0.00	0.00
8,300.0	90.00	269.37	6,305.0	198.0	-3,111.7	3,116.1	0.00	0.00	0.00
8,400.0	90.00	269.37	6,305.0	196.9	-3,211.7	3,216.0	0.00	0.00	0.00
8,500.0	90.00	269.37	6,305.0	195.8	-3,311.7	3,315.9	0.00	0.00	0.00
8,600.0	90.00	269.37	6,305.0	194.7	-3,411.6	3,415.9	0.00	0.00	0.00
8,700.0	90.00	269.37	6,305.0	193.6	-3,511.6	3,515.8	0.00	0.00	0.00
8,800.0	90.00	269.37	6,305.0	192.5	-3,611.6	3,615.7	0.00	0.00	0.00
8,900.0	90.00	269.37	6,305.0	191.4	-3,711.6	3,715.6	0.00	0.00	0.00
9,000.0	90.00	269.37	6,305.0	190.3	-3,811.6	3,815.5	0.00	0.00	0.00
9,100.0	90.00	269.37	6,305.0	189.2	-3,911.6	3,915.5	0.00	0.00	0.00
9,200.0	90.00	269.37	6,305.0	188.1	-4,011.6	4,015.4	0.00	0.00	0.00
9,300.0	90.00	269.37	6,305.0	187.0	-4,111.6	4,115.3	0.00	0.00	0.00
9,400.0	90.00	269.37	6,305.0	185.9	-4,211.6	4,215.2	0.00	0.00	0.00
9,500.0	90.00	269.37	6,305.0	184.8	-4,311.6	4,315.1	0.00	0.00	0.00
9,600.0	90.00	269.37	6,305.0	183.7	-4,411.6	4,415.1	0.00	0.00	0.00
9,700.0	90.00	269.37	6,305.0	182.6	-4,511.6	4,515.0	0.00	0.00	0.00
9,800.0	90.00	269.37	6,305.0	181.5	-4,611.6	4,614.9	0.00	0.00	0.00
9,900.0	90.00	269.37	6,305.0	180.3	-4,711.6	4,714.8	0.00	0.00	0.00
10,000.0	90.00	269.37	6,305.0	179.2	-4,811.6	4,814.7	0.00	0.00	0.00
10,100.0	90.00	269.37	6,305.0	178.1	-4,911.6	4,914.7	0.00	0.00	0.00
10,200.0	90.00	269.37	6,305.0	177.0	-5,011.6	5,014.6	0.00	0.00	0.00
10,300.0	90.00	269.37	6,305.0	175.9	-5,111.5	5,114.5	0.00	0.00	0.00
10,400.0	90.00	269.37	6,305.0	174.8	-5,211.5	5,214.4	0.00	0.00	0.00
10,500.0	90.00	269.37	6,305.0	173.7	-5,311.5	5,314.3	0.00	0.00	0.00
10,600.0	90.00	269.37	6,305.0	172.6	-5,411.5	5,414.3	0.00	0.00	0.00
10,700.0	90.00	269.37	6,305.0	171.5	-5,511.5	5,514.2	0.00	0.00	0.00
10,800.0	90.00	269.37	6,305.0	170.4	-5,611.5	5,614.1	0.00	0.00	0.00
10,900.0	90.00	269.37	6,305.0	169.3	-5,711.5	5,714.0	0.00	0.00	0.00
10,994.2	90.00	269.37	6,305.0	168.3	-5,805.7	5,808.1	0.00	0.00	0.00
BHL 1320'FSL & 460'FWL									

Database:	Landmark	Local Co-ordinate Reference:	Well NORTH PLATTE X-D-35HZ
Company:	BONANZA CREEK ENERGY OPERATING	TVD Reference:	RKB @ 4555.0ft (KB 15')
Project:	SEC.36-T5N-R63W	MD Reference:	RKB @ 4555.0ft (KB 15')
Site:	NORTH PLATTE X-D-35HZ SEC.36-5N-63W	North Reference:	True
Well:	NORTH PLATTE X-D-35HZ	Survey Calculation Method:	Minimum Curvature
Wellbore:	Wellbore #1		
Design:	PLAN 1 (FEB 28 2012) PROG 2/23		

Targets										
Target Name										
- hit/miss target	Dip Angle	Dip Dir.	TVD	+N/-S	+E/-W	Northing	Easting		Latitude	Longitude
- Shape	(°)	(°)	(ft)	(ft)	(ft)	(ft)	(ft)			
T1 1320'FSL & 460'FE	0.00	0.00	6,305.0	215.0	-1,549.7	1,373,194.45	3,307,752.32		40.352560	-104.395750
- plan misses target center by 0.3ft at 6737.9ft MD (6305.0 TVD, 215.3 N, -1549.7 E)										
- Point										
HARDLINE BH	0.00	0.00	2.0	-300.0	-5,805.0	1,372,626.27	3,303,503.95		40.351145	-104.411017
- plan misses target center by 5812.7ft at 2.0ft MD (2.0 TVD, 0.0 N, 0.0 E)										
- Polygon										
Point 1			2.0	0.0	0.0	1,372,626.27	3,303,503.95			
Point 2			2.0	1,000.0	0.0	1,373,626.14	3,303,491.44			
BHL 1320'FSL & 460'I	0.00	0.00	6,305.0	168.3	-5,805.7	1,373,094.46	3,303,497.40		40.352430	-104.411020
- plan hits target center										
- Point										
HARDLINE SH	0.00	0.00	2.0	-300.0	-1,550.0	1,372,679.52	3,307,758.43		40.351146	-104.395751
- plan misses target center by 1578.8ft at 2.0ft MD (2.0 TVD, 0.0 N, 0.0 E)										
- Polygon										
Point 1			2.0	0.0	0.0	1,372,679.52	3,307,758.43			
Point 2			2.0	1,000.0	0.0	1,373,679.39	3,307,745.92			

Casing Points				
Measured Depth (ft)	Vertical Depth (ft)	Name	Casing Diameter (")	Hole Diameter (")
6,739.0	6,305.0	7"	7	8-3/4

Formations					
Measured Depth (ft)	Vertical Depth (ft)	Name	Lithology	Dip (°)	Dip Direction (°)
3,354.8	3,285.0	PARKMAN		0.00	
4,103.4	4,005.0	SUSSEX		0.00	
6,254.0	6,095.0	SHARON SPRINGS		0.00	
6,437.3	6,220.0	NIOBRARA A CHALK		0.00	
6,458.0	6,231.0	NIOBRARA A MARL		0.00	
6,573.8	6,279.0	NIOBRARA B CHALK		0.00	
6,739.1	6,305.0	NIOBRARA B MARL		0.00	
6,739.1	6,305.0	NIOBARA B TARGET		0.00	
	6,351.0	NIOBARA C CHALK		0.00	

Plan Annotations				
Measured Depth (ft)	Vertical Depth (ft)	+N/-S (ft)	+E/-W (ft)	Comment
1,000.0	1,000.0	0.0	0.0	KOP 1
5,920.0	5,783.2	221.0	-1,030.0	KOP 2