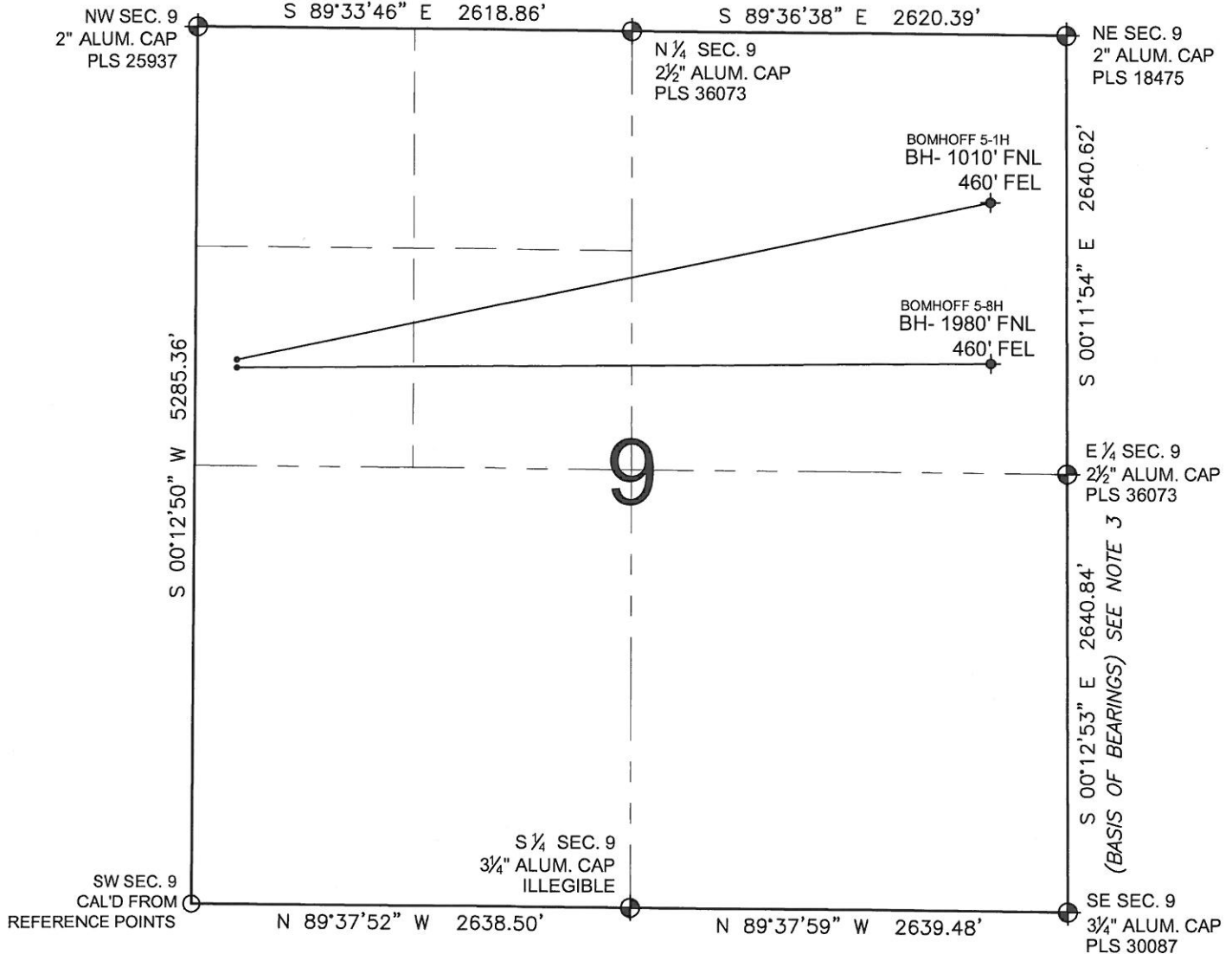


# PAD DRAWING: BOMHOFF 2 PAD

SECTION 9, TOWNSHIP 4 SOUTH, RANGE 64 WEST, 6TH P.M.



## LEGEND

- ⊕ = EXISTING MONUMENT
- ⬮ = BOTTOM HOLE
- BH= BOTTOM HOLE
- = PROPOSED WELL
- ◆ = EXISTING WELL

## NOTES:

- THIS FIELD SURVEY CONFORMS TO THE MINIMUM STANDARDS SET BY THE C.O.G.C.C., RULE NO. 215
- HORIZONTAL POSITIONS AND ORTHOMETRIC ELEVATIONS SHOWN AT THE WELL HEAD, ARE BASED ON GPS-RTK POSITIONS DERIVED FROM MINIMUM 2-HOUR STATIC OBSERVATIONS CORRECTED BY THE NATIONAL GEODETIC SURVEY ONLINE POSITIONING USER SERVICE, O.P.U.S. DATUM: HORIZONTAL = NAD83/2007, VERTICAL = NAVD88
- THE BASIS OF BEARINGS ARE STATE PLANE COORDINATE SYSTEM GRID BEARINGS SHOWN HEREON BETWEEN THE DESCRIBED THE MONUMENTS SHOWN HEREON.
- GRID DISTANCES ARE SHOWN, AS MEASURED IN THE FIELD, WITH TIES TO WELLS MEASURED PERPENDICULAR TO SECTION LINES.

## NOTES:

- BOMHOFF 5-1H TO BE AT 2003' FNL, 250' FWL.  
 BOTTOM HOLE AT 1010' FNL & 460' FEL.  
 BOMHOFF 5-8H TO BE AT 2033' FNL, 250' FWL.  
 BOTTOM HOLE AT 1980' FNL & 460' FEL.

PREPARED BY:



ANADARKO E&P CO LP

FIELD DATE: 12-13-11	PAD NAME: BOMHOFF 2 PAD
DRAWING DATE: 02-07-12	SURFACE LOCATION: ARAPAHOE COUNTY, COLORADO
BY: SMF	SW 1/4 NW 1/4, SEC. 9, T4S, R64W, 6TH P.M.

