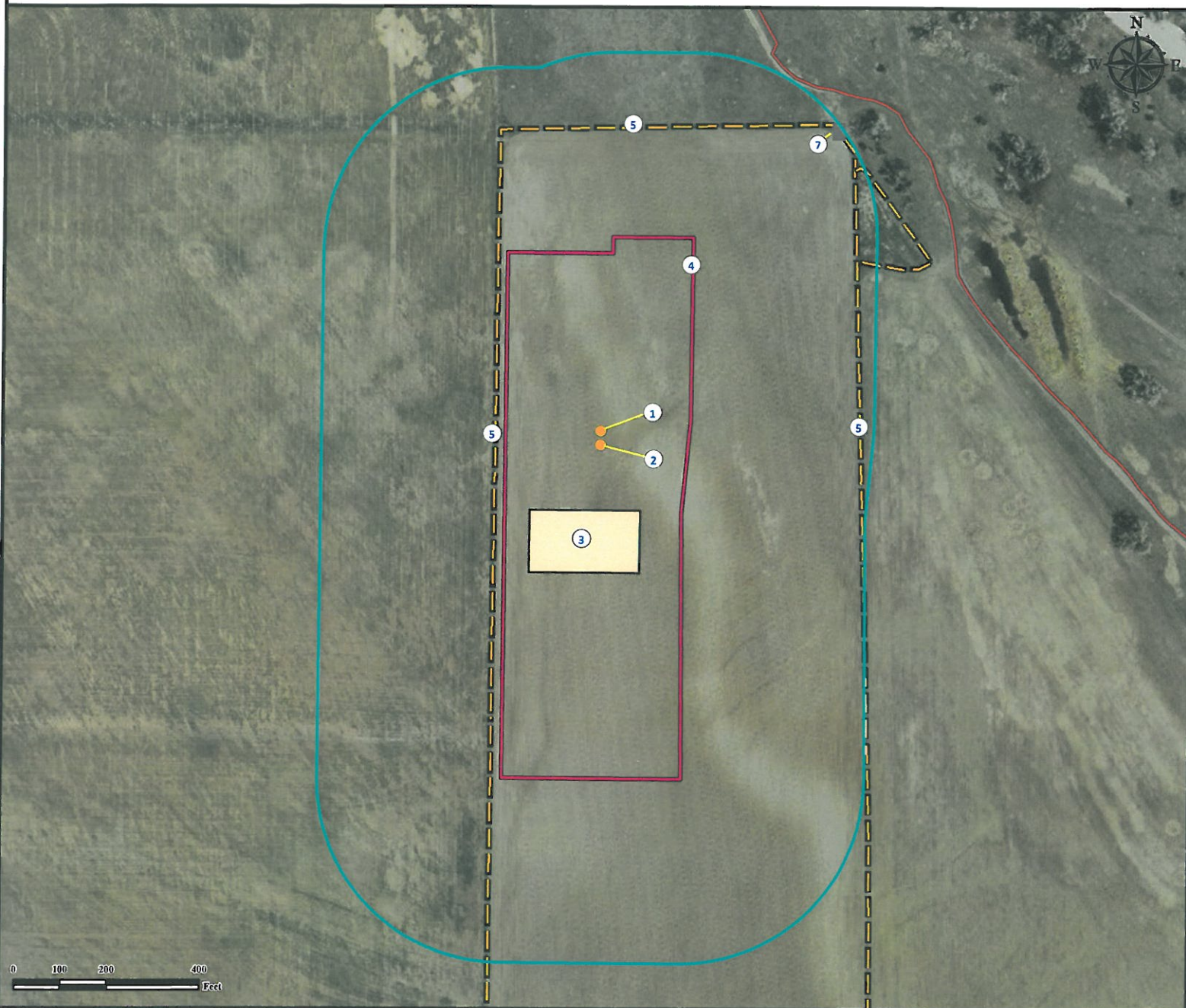


# Location Drawing BOMHOFF 5-8H

## Horizontal Multi Well Pad

SW¼ NW¼ SECTION 09, TOWNSHIP 4 SOUTH, RANGE 64 WEST OF THE 6TH PRINCIPAL MERIDIAN



1. Proposed Well BOMHOFF 5-1H.

4. Operational Disturbance Area.

2. Proposed Well BOMHOFF 5-8H.

5. Fences are  $\pm 227'$  W,  $\pm 565'$  E, and  $\pm 686'$  N.

3. Proposed Facility is to be  $\pm 145'$  S.

6. Gate is  $\pm 851'$  NE.

### Legend

- |               |                   |              |
|---------------|-------------------|--------------|
| Gate          | Disturbance Area  | Fence        |
| Proposed Well | Proposed Facility | 400' Radius  |
|               |                   | Private Road |

### Reference Location

\*\* All Measurements are Made from  
Reference Well BOMHOFF 5-8H \*\*  
Lat: 39.719116° Long: -104.563674° (NAD83)  
Elevation: 5609 Feet

Surface Use: Dryland Crop



Use our resources to find yours!  
[www.petro-fs.com](http://www.petro-fs.com)  
(303) 928-7128

Field Date: 12/13/2011  
Drafting Date: 03/01/2012  
Drafter: KLM  
Checked By: BHF

Data Sources:  
- Aerial courtesy of NAIP (2009)

Prepared for:



ANADARKO E & P CO., L.P.