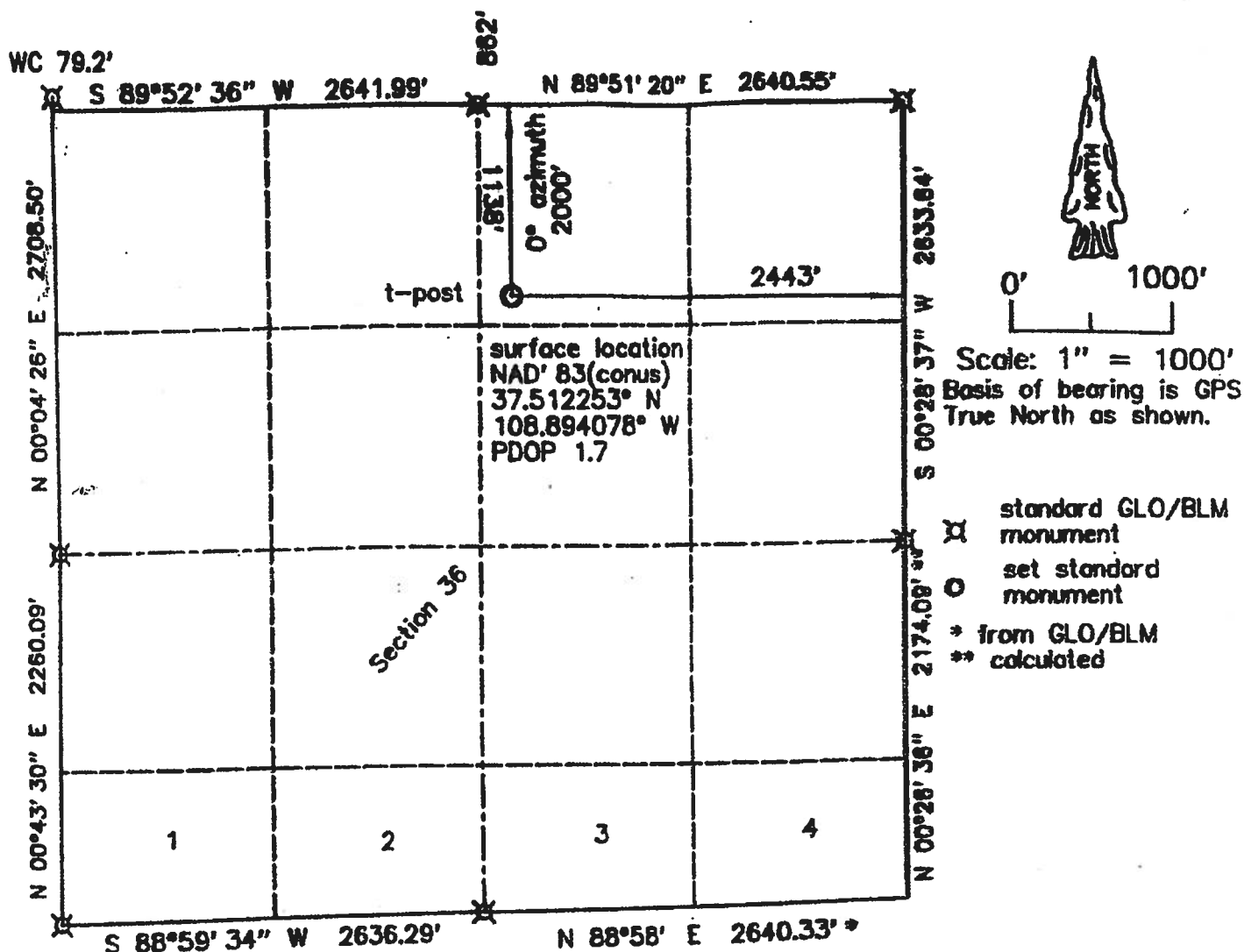


# WELL SURFACE LOCATION PLAT



KINDER MORGAN CO2 COMPANY, LP  
 HB - 6  
 1138' FNL & 2443' FEL  
 Section 36, T.38 N., R.19 W., NMPM  
 Montezuma County, CO  
 6317.0' grd. el. NAVD '88 (from OPUS)

Notes:  
 1) Distances/dimensions are perpendicular to section/aliquot lines.  
 2) Surface use is Fee dryland crop.  
 3) GPS was corrected with OPUS, GPS operator was R.J. Coffey, CO LS 36562  
 4) There are no improvements within 400 feet, except non boundary fence lines.

date of survey : 10/21/2011  
 date of plat : 10/24/2011

KNOW ALL MEN BY THESE PRESENTS that I, GERALD G. HUDDLESTON, do hereby certify that this plat was prepared from field notes of an actual survey made by me or under my supervision and that the same is true and accurate to the best of my knowledge and belief.

