

ALLREAD LG30-64HN

Proposed Spacing Unit – Noble Energy, Inc

Section 30: ALL, Township 8 North, Range 59 West



Legend



Proposed 640 acre spacing unit



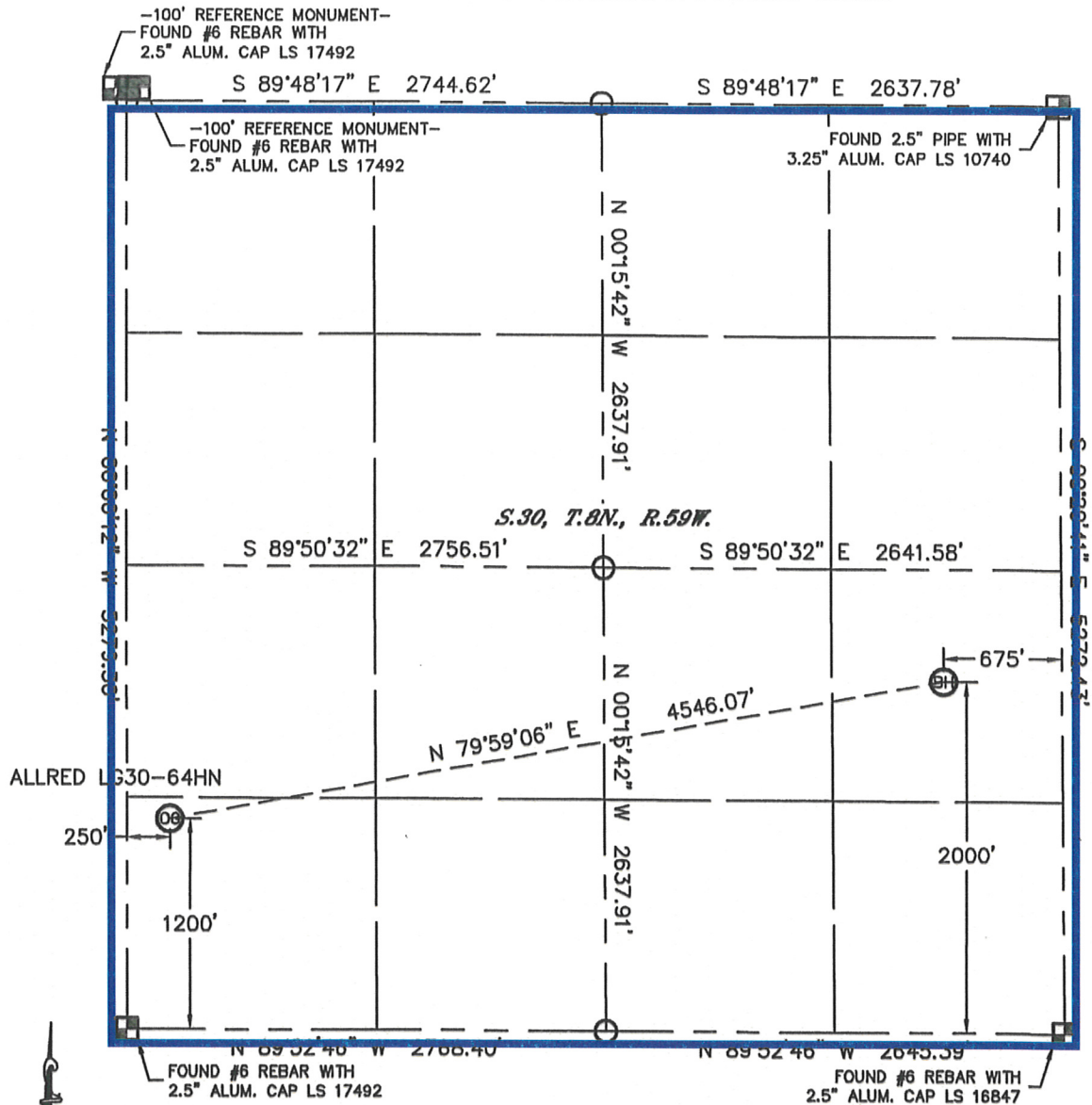
Bottom Hole Location

Lat40°, Inc. 1635 Foxtrail Drive, Suite 325 Loveland, CO 970-776-3321

WELL LOCATION CERTIFICATE

SECTION: 30
TOWNSHIP: 8N
RANGE: 59W

THIS MAP DOES NOT REPRESENT A BOUNDARY SURVEY



In accordance with a request from Jim Curry with Noble Energy Inc., Lat40°, Inc. has determined the surface location of the ALLRED LG30-64HN to be 1200' from the SOUTH line and 250' from the WEST line and the bottom hole to be 2000' from the SOUTH line and 675' from the EAST line as measured at right angles from the section lines of Section 30, Township 8 North, Range 59 West of the Sixth Principal Meridian, County of Weld, State of Colorado.

I hereby state that this Well Location Certificate was prepared by me, or under my direct supervision, that the fieldwork was completed on 11/10/11, for and on behalf of Noble Energy Inc. That this is not a Land Survey Plat or an Improvement Survey Plat, and that it is not to be relied upon for establishment of fence, building, or other future Improvement lines.

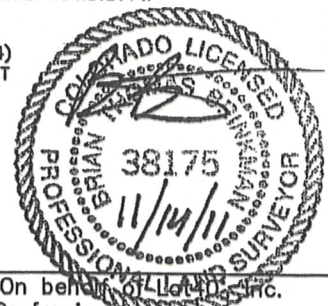
NOTE:

- 1) Bearings shown are Grid Bearings of the Colorado State Plane Coordinate System, North Zone, North American Datum 1983/2007. The lineal dimensions as contained herein are based upon the "U.S. Survey Foot."
- 2) Ground elevations are based on an observed GPS elevation (NAVD 1988 DATUM).
- 3) NEAREST EXISTING WELL: NONE WITHIN SECTION
- 4) IMPROVEMENTS: See LOCATION DRAWING for all visible Improvements within 400' of disturbed area.
- 5) SURFACE USE: RANGELAND
- 6) INSTRUMENT OPERATOR: ADAM KELLY



SURFACE LOCATION
LATITUDE: 40.62958°N
LONGITUDE: 104.02931°W
PDOP: 1.1
ELEV: 4934'

1/4, 1/4: SW1/4SW1/4 (GOV'T LOT 4)
NEAREST PROPERTY LINE: 250' WEST

BOTTOM HOLE
LATITUDE: 40.63154°N
LONGITUDE: 104.01314°W



LEGEND

-  = ALIQUOT MONUMENT AS DESCRIBED
-  = CALCULATED POSITION

NOTE

According to Colorado law, you must commence any legal action based upon any defect in this W.L.C. within three years after you discover such defect. In no event, may any action based upon any defect in this survey be commenced more than ten years after the date of the certificate shown hereon. (13-80-105 C.R.S.)

Brian T. Brinkman—On behalf of Lat40°, Inc.
Colorado Licensed Professional
Land Surveyor No. 38175
PROJECT#: 2011302