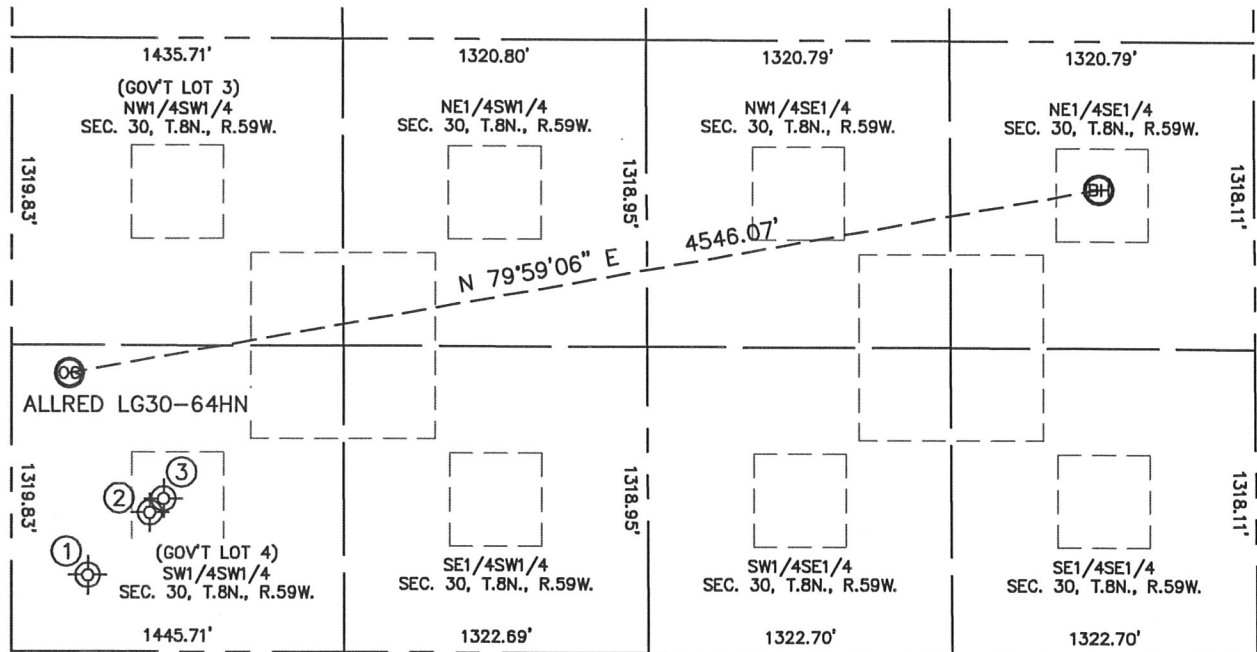


Lat40°, Inc. 1635 Foxtrail Drive, Suite 325 Loveland, CO 970-776-3321

SITE SKETCH

ALLRED LG30-64HN

SECTION: 30
TOWNSHIP: 8N
RANGE: 59W



①
MINNIE 1
(DRY & ABANDONED)
SW1/4SW1/4
330' FSL (COGCC)
330' FWL (COGCC)
LAT-40.627125°N (COGCC)
LONG-104.02916°W (COGCC)
PDOP: N/A
ELEV: 4946' (COGCC)

②
BUCKINGHAM J 13-30
(DRY & ABANDONED)
SW1/4SW1/4
600' FSL (COGCC)
600' FWL (COGCC)
LAT-40.627865°N (COGCC)
LONG-104.02817°W (COGCC)
PDOP: N/A
ELEV: 4949' (COGCC)

③
CHRISTIANA-DOLL 1
(DRY & ABANDONED)
SW1/4SW1/4
660' FSL (COGCC)
660' FWL (COGCC)
LAT-40.628025°N (COGCC)
LONG-104.02795°W (COGCC)
PDOP: N/A
ELEV: UNKNOWN' (COGCC)

