

Project: Weld County, CO (NAD 83)  
Site: Sec. 25-T3N-R66W  
Well: Camp 1N-25HZ  
Wellbore: Plan A Rev 2  
Design: Plan A Rev 2 Proposal

# Anadarko Petroleum Corp.

**HALLIBURTON**  
Sperry Drilling

SECTION DETAILS

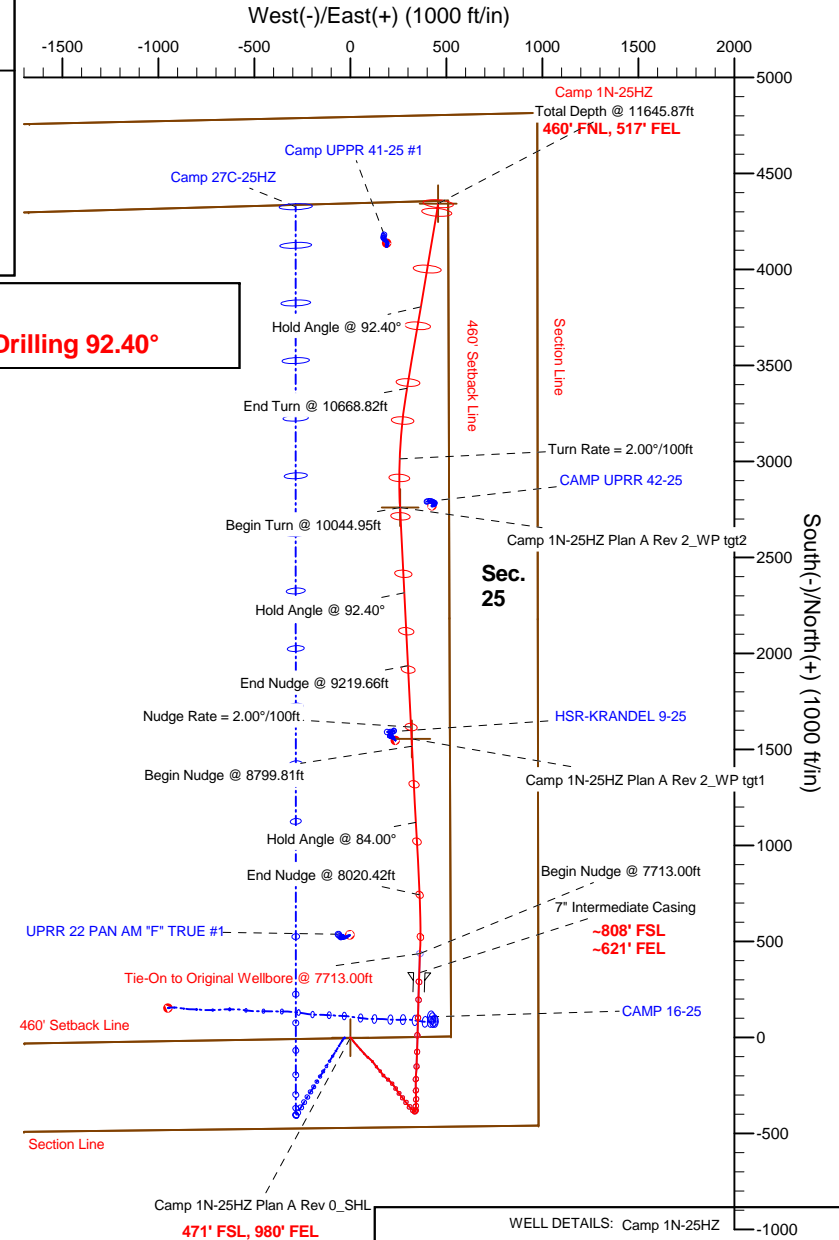
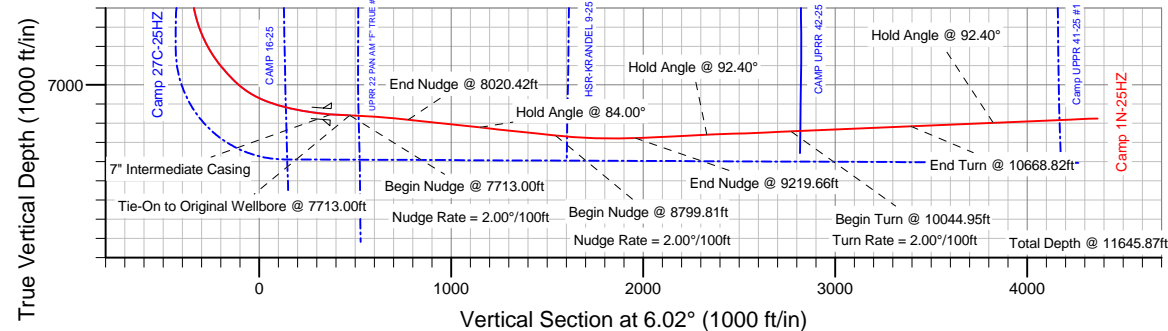
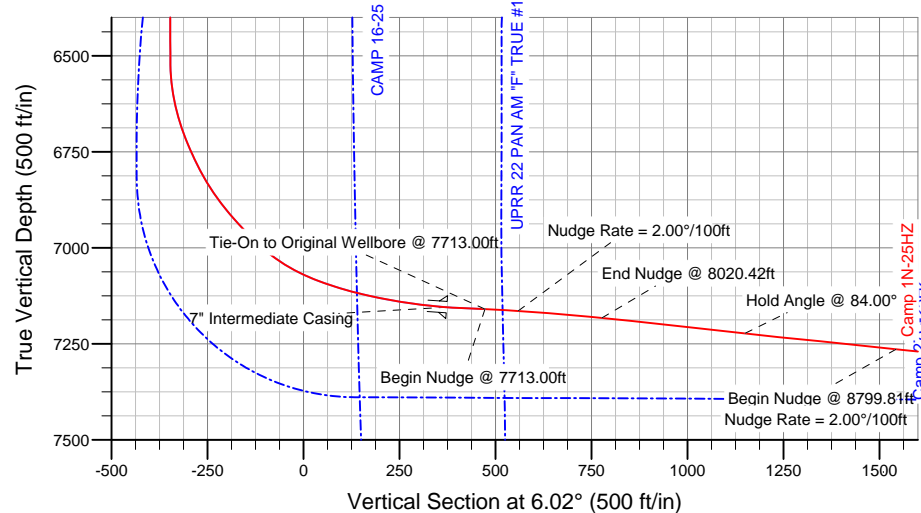
Sec	MD	Inc	Azi	TVD	+N/-S	+E/-W	DLeg	TFace	VSec	Target
1	7713.00	87.34	2.28	7159.66	437.26	362.69	0.00	0.00	472.87	
2	8020.42	84.00	357.10	7182.88	743.65	361.07	2.00	-123.07	777.41	Camp 1N-25HZ Plan A Rev 2_WP tgt2
3	8799.81	84.00	357.10	7264.35	1517.78	321.88	0.00	0.00	1543.16	
4	9219.66	92.40	357.10	7277.54	1936.51	300.68	2.00	0.00	1957.36	Camp 1N-25HZ Plan A Rev 2_WP tgt2
5	10044.95	92.40	357.10	7243.02	2760.02	259.00	0.00	0.00	2771.96	Camp 1N-25HZ Plan A Rev 2_WP tgt2
6	10668.82	92.40	9.59	7216.83	3381.04	295.31	2.00	89.75	3393.37	
7	11645.87	92.40	9.59	7176.00	4343.60	457.95	0.00	0.00	4367.67	Camp 1N-25HZ Plan A Rev 0_BHL

WELLBORE TARGET DETAILS (LAT/LONG)

Name	TVD	+N/-S	+E/-W	Latitude	Longitude	Shape
Camp 2 Pad_Section Lines	-76.00	-20.91	-3874.85	40° 11' 25.410 N	104° 43' 59.210 W	Polygon
Camp 2 Pad_Setback Lines	-76.00	-20.91	-3874.85	40° 11' 25.410 N	104° 43' 59.210 W	Polygon
Camp 1N-25HZ Plan A Rev 0_SHL	0.00	0.00	0.00	40° 11' 25.620 N	104° 43' 9.281 W	Point
Camp 1N-25HZ Plan A Rev 0_BHL	7176.00	4343.60	457.95	40° 12' 8.543 N	104° 43' 3.379 W	Point
Camp 1N-25HZ Plan A Rev 2_WP tgt1	7268.02	1555.02	320.00	40° 11' 40.986 N	104° 43' 5.157 W	Point

Target Line:

7345' TVDkb @ 0° VS Drilling 92.40°



WELL DETAILS: Camp 1N-25HZ

Ground Level: 4967.00 RKB - 25' @ 4992.00ft (HP 308)

Plan: Plan A Rev 2 Proposal (Camp 1N-25HZ/Plan A Rev 2)

Created By: Fred Hartmann Date: 03-08-2012  
Reviewed: Date: