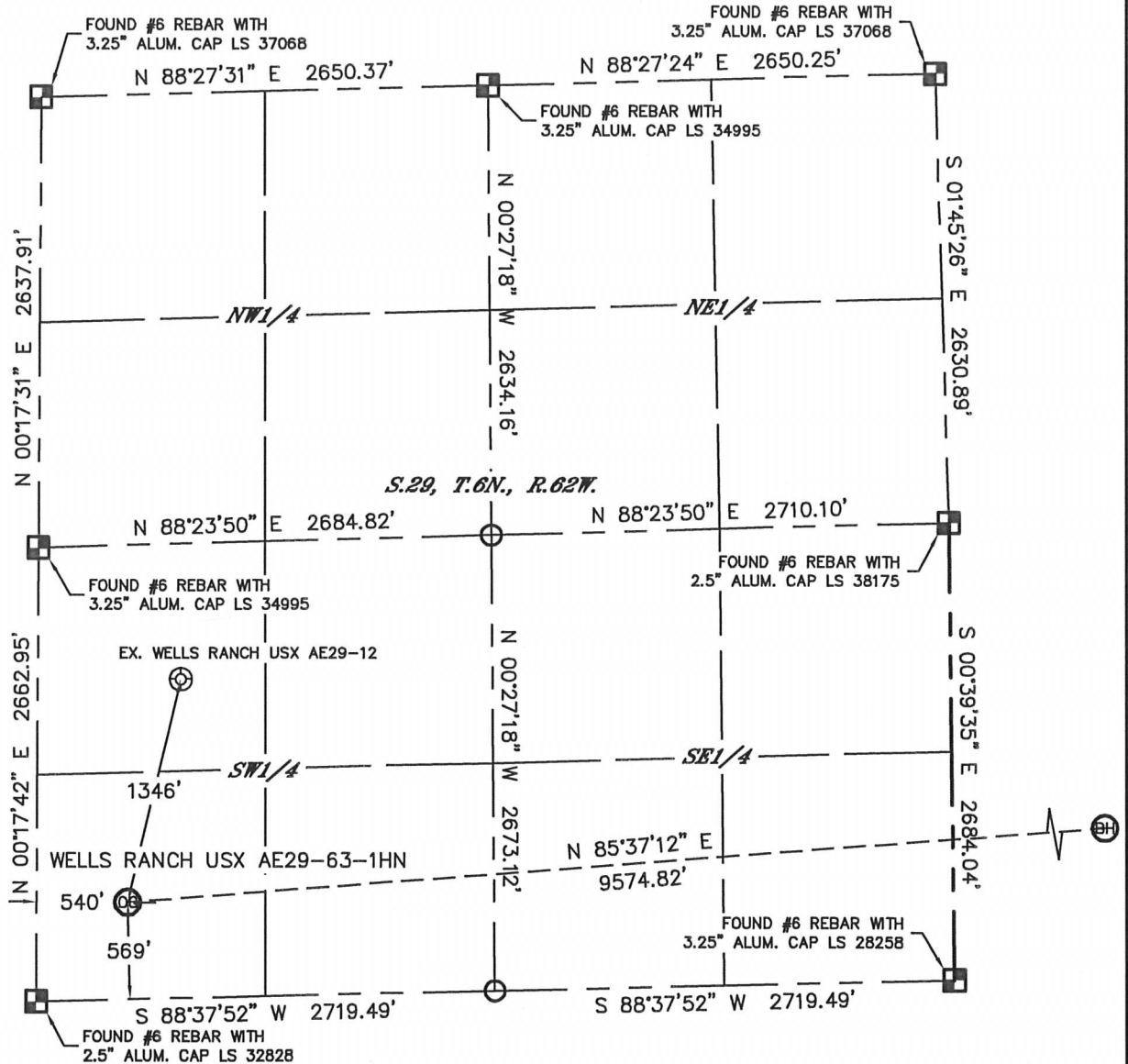


WELL LOCATION CERTIFICATE

THIS MAP DOES NOT REPRESENT A BOUNDARY SURVEY

SECTION: 29
TOWNSHIP: 6N
RANGE: 62W



In accordance with a request from Sean Casper with Noble Energy Inc., Lat40°, Inc. has determined the surface location of the WELLS RANCH USX AE29-63-1HN to be 569' from the SOUTH line and 540' from the WEST line as measured at right angles from the section lines of Section 29, Township 6 North, Range 62 West and the bottom hole to be 990' from the SOUTH line and 535' from the EAST line as measured at right angles from the section lines of Section 28, Township 6 North, Range 62 West of the Sixth Principal Meridian, County of Weld, State of Colorado.

I hereby state that this Well Location Certificate was prepared by me, or under my direct supervision, that the fieldwork was completed on 1/6/2012, for and on behalf of Noble Energy Inc. That this is not a Land Survey Plat or an Improvement Survey Plat, and that it is not to be relied upon for establishment of fence, building, or other future improvement lines.

NOTE:

- 1) Bearings shown are Grid Bearings of the Colorado State Plane Coordinate System, North Zone, North American Datum 1983/2007. The lineal dimensions as contained herein are based upon the "U.S. Survey Foot."
- 2) Ground elevations are based on an observed GPS elevation (NAVD 1988 DATUM).
- 3) NEAREST EXISTING WELL: WELLS RANCH USX AE29-12, 1346'
- 4) IMPROVEMENTS: See LOCATION DRAWING for all visible Improvements within 400' of disturbed area.
- 5) SURFACE USE: RANGELAND
- 6) INSTRUMENT OPERATOR: ADAM KELLY

NOTE

According to Colorado law, you must commence any legal action based upon any defect in this W.L.C. within three years after you discover such defect. In no event, may any action based upon any defect in this survey be commenced more than ten years after the date of the certificate shown hereon. (13-80-105 C.R.S.)

LEGEND

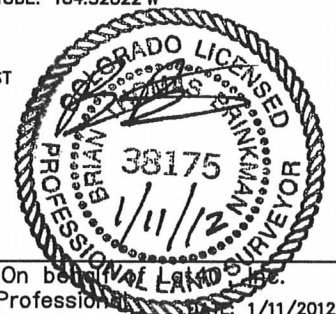
- = ALIQUOT MONUMENT AS DESCRIBED
- = CALCULATED POSITION

SURFACE LOCATION
LATITUDE: 40.45199°N
LONGITUDE: 104.35455°W
PDOP: 1.2
ELEV: 4769'
1/4, 1/4: SW1/4SW1/4
NEAREST PROPERTY LINE: 540' WEST

BOTTOM HOLE
LATITUDE: 40.45365°N
LONGITUDE: 104.32022°W

SHEET 1 OF 2

Brian T. Brinkman—On behalf of
Colorado Licensed Professional Land Surveyor
Land Surveyor No. 38175

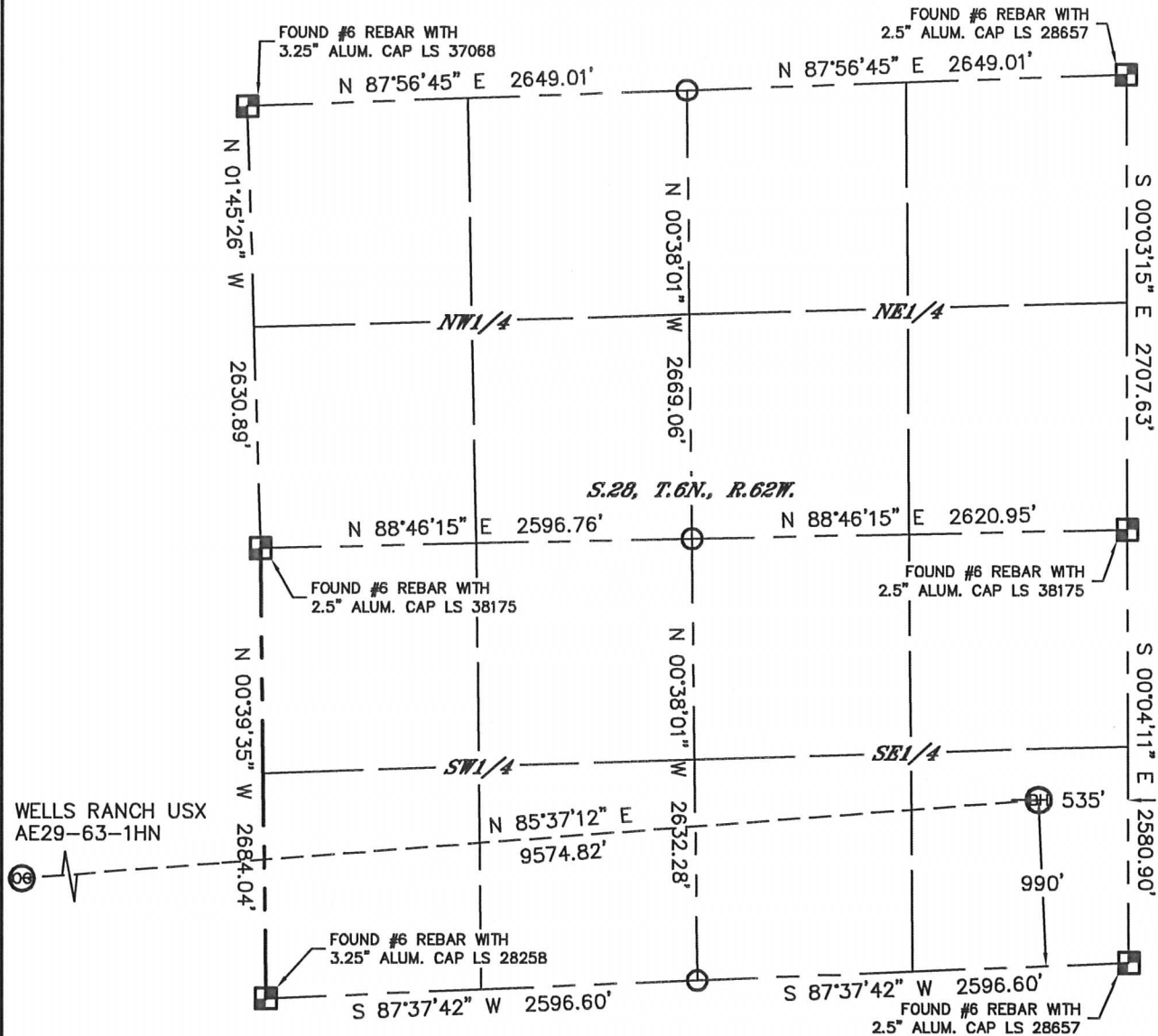


DATE: 1/11/2012
PROJECT#: 2011022

WELL LOCATION CERTIFICATE

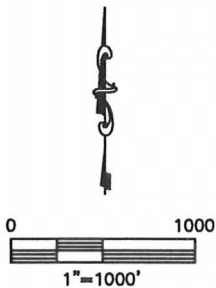
THIS MAP DOES NOT REPRESENT A BOUNDARY SURVEY

SECTION: 29
TOWNSHIP: 6N
RANGE: 62W



WELLS RANCH USX
AE29-63-1HN



06



NOTE

According to Colorado law, you must commence any legal action based upon any defect in this W.L.C. within three years after you discover such defect. In no event, may any action based upon any defect in this survey be commenced more than ten years after the date of the certificate shown hereon. (13-80-105 C.R.S.)

LEGEND

-  = ALIQUOT MONUMENT AS DESCRIBED
-  = CALCULATED POSITION

SHEET 2 OF 2

Brian T. Brinkman—On behalf of Lat40°, Inc.
Colorado Licensed Professional
Land Surveyor No. 38175

DATE: 1/11/2012
PROJECT#: 2011022

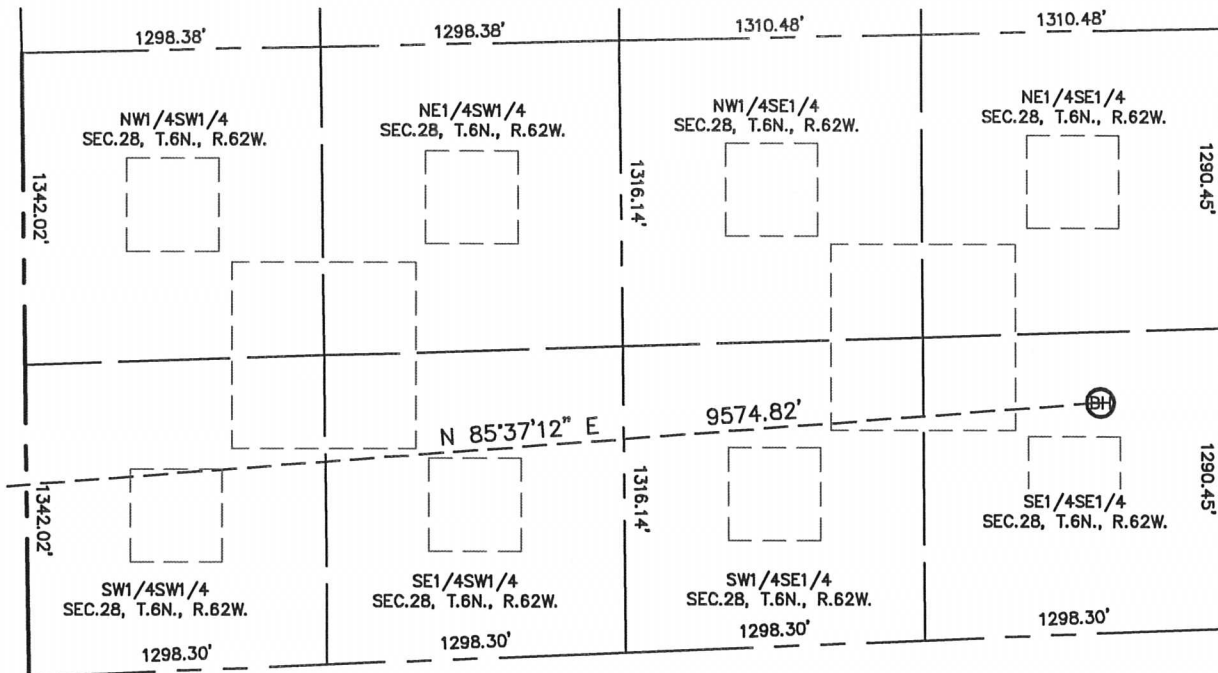
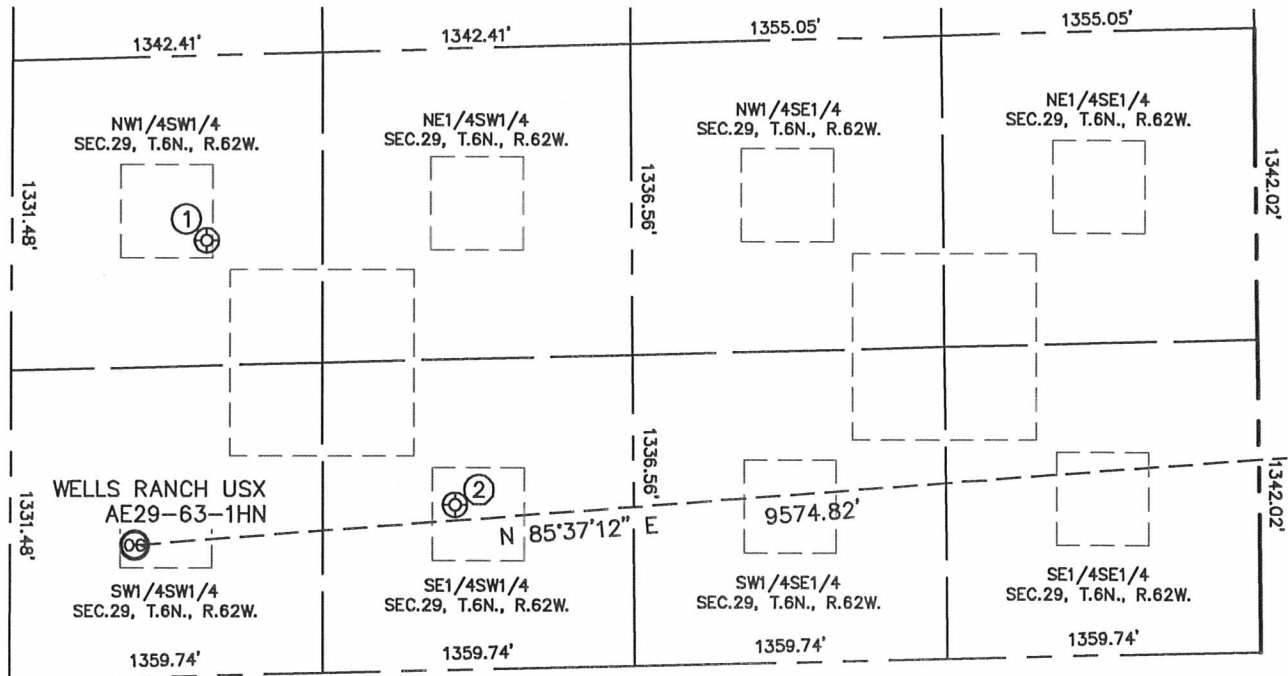


Lat40°, Inc. 1635 Foxtrail Drive, Suite 325 Loveland, CO (970)776-3321

SITE SKETCH

WELLS RANCH USX AE29-63-1HN

SECTION: 28
TOWNSHIP: 6N
RANGE: 62W

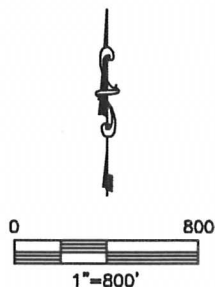


①

WELLS RANCH USX
AE29-12
NW1/4SW1/4
1870' FSL
846' FWL
LAT-40.45557°N
LONG-104.35336°W
PDOP: 2.6
ELEV: 4787'

②

WELLS RANCH USX
AE29-14
SE1/4SW1/4
710' FSL
1932' FWL
LAT-40.45242°N
LONG-104.34954°W
PDOP: 1.9
ELEV: 4783'



DATE: 1/11/2012
PROJECT#: 2011022