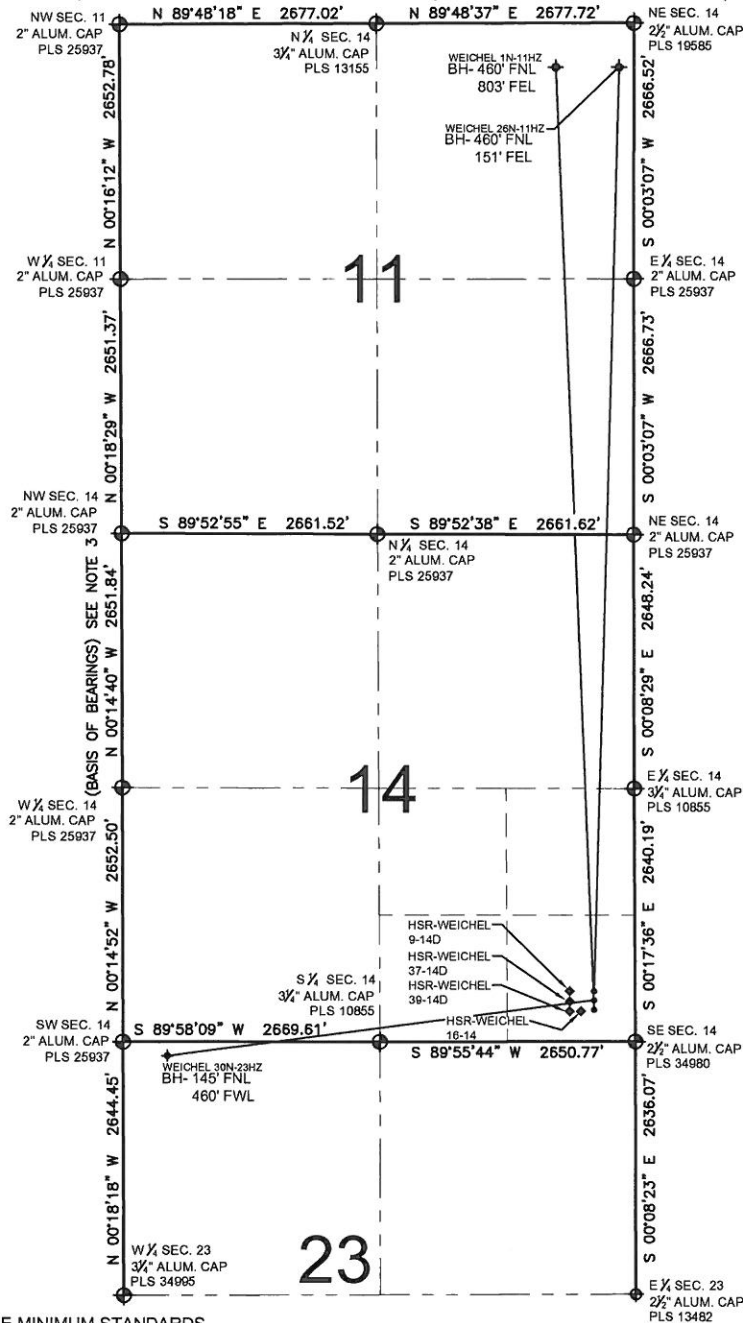


PAD DRAWING: WEICHEL 3 PAD

SECTION 14, TOWNSHIP 2 NORTH, RANGE 65 WEST, 6TH P.M.



NOTES:

1. THIS FIELD SURVEY CONFORMS TO THE MINIMUM STANDARDS SET BY THE C.O.G.C.C., RULE NO. 215
2. HORIZONTAL POSITIONS AND ORTHOMETRIC ELEVATIONS SHOWN AT THE WELL HEAD, ARE BASED ON GPS-RTK POSITIONS DERIVED FROM MINIMUM 2-HOUR STATIC OBSERVATIONS CORRECTED BY THE NATIONAL GEODETIC SURVEY ONLINE POSITIONING USER SERVICE, O.P.U.S.
DATUM: HORIZONTAL = NAD83/2007, VERTICAL = NAVD88
3. THE BASIS OF BEARINGS ARE STATE PLANE COORDINATE SYSTEM GRID BEARINGS SHOWN HEREON BETWEEN THE DESCRIBED THE MONUMENTS SHOWN HEREON.
4. GRID DISTANCES ARE SHOWN, AS MEASURED IN THE FIELD, WITH TIES TO WELLS MEASURED PERPENDICULAR TO SECTION LINES.

NOTES:

WEICHEL 26N-11HZ TO BE AT 526' FSL, 422' FEL.
BOTTOM HOLE AT 460' FNL & 151' FEL.
WEICHEL 30N-23HZ TO BE AT 496' FSL, 420' FEL.
BOTTOM HOLE AT 145' FNL & 460' FWL.
WEICHEL 1N-11HZ TO BE AT 466' FSL, 418' FEL.
BOTTOM HOLE AT 460' FNL & 803' FEL.

LEGEND

- = EXISTING MONUMENT
- = PROPOSED WELL
- ◆ = BOTTOM HOLE
- ◆ = EXISTING WELL
- BH= BOTTOM HOLE

PREPARED BY:

PFS llc

Petroleum Field Services, LLC
1801 W. 13th Ave.
Denver, CO 80204



KERR-MCGEE OIL & GAS ONSHORE LP

FIELD DATE: 10-14-11	PAD NAME: WEICHEL 3 PAD
DRAWING DATE: 10-24-11	SURFACE LOCATION: WELD COUNTY, COLORADO
BY: SMF	SE 1/4 SE 1/4, SEC. 14, T2N, R65W, 6TH P.M.