

1625 Broadway
Suite 2000
Denver, CO 80202

Tel: 303.228.4000
Fax: 303.228.4280

www.nobleenergyinc.com



February 10, 2012

Colorado Oil and Gas Conservation Commission
The Chancery Building
1120 Lincoln Street, Suite 801
Denver, CO 80203

Attn: Mr. David Neslin, Director

RE: **BOULTER G21-69HN**
Niobrara New Drill
Township 4 North, Range 65 West, 6th P.M.
Section 16: SW/4SE/4: 815' FSL & 1926' FEL (Surface Location)
Section 21: NW/4NE/4: 75' FNL & 1310' FEL (Begin Production Location)
Section 22: NE/4NE/4: 75' FNL & 535' FEL (Bottom Hole Location)
Weld County, Colorado

Mr. Neslin:

Noble Energy, Inc. ("NEI") is planning to drill the captioned boundary well in accordance with the provisions of COGCC Rule 318A.e.

NEI's proposed wellbore spacing unit consists of the S/2S/2 of Section 15, S/2SE/4 of Section 16, N/2NE/4 of Section 21 and the N/2N/2 of Section 22, T4N, R65W, creating a 480-acre wellbore spacing unit for the Niobrara formation. NEI is not the only owner within the proposed wellbore spacing unit and as such provided notice to the remaining owner(s) within said proposed spacing unit as required under COGCC Rule 318A(l).e(6). Copies of the required notice letter(s) is/are on file at the NEI offices. The required thirty (30) day notice period has elapsed absent the receipt by NEI of an objection to said proposal by the owner(s) within the proposed spacing unit for this well.

Enclosed are copies of the following documents to assist you in your review and approval of NEI's proposed APD for the captioned well:

- Map & plat illustrating proposed wellbore spacing unit.

Thank you for your attention to the enclosed. NEI respectfully requests that the COGCC review the enclosed information and approve the Application for Permit to Drill the captioned well.

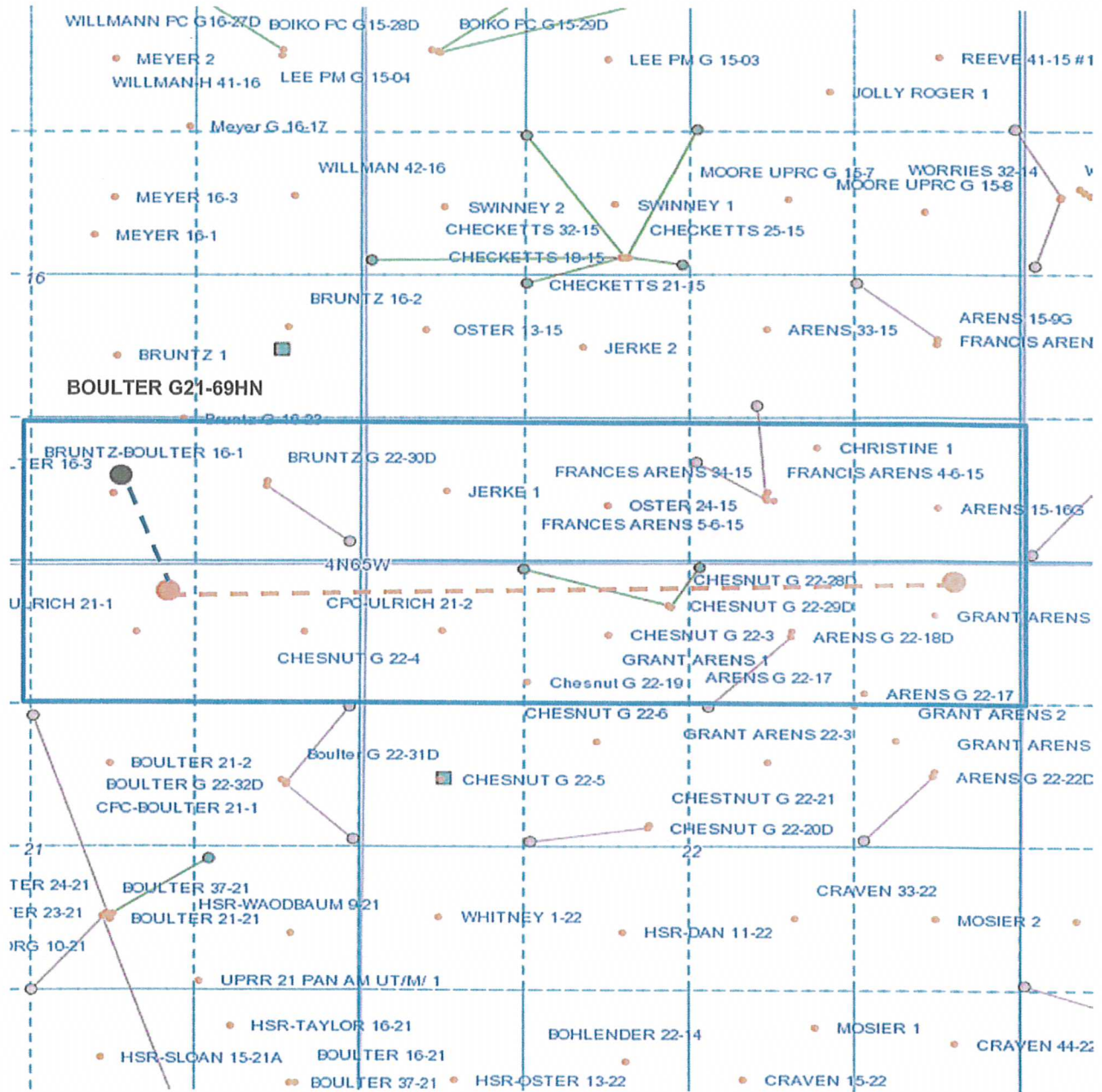
Sincerely,

A handwritten signature in blue ink that reads "Jan Kajiwarra by Mai Clark".



Jan Kajiwarra
Regulatory Analyst II
Noble Energy Inc.

BOULTER G21-69HN

S/2SE/4 Sec. 16 & N/2NE/4 Sec. 21, Township 4 North, Range 65 West
 S/2S/2 Sec. 15 & N/2N/2 Sec. 22, Township 4 North, Range 65 West



Legend

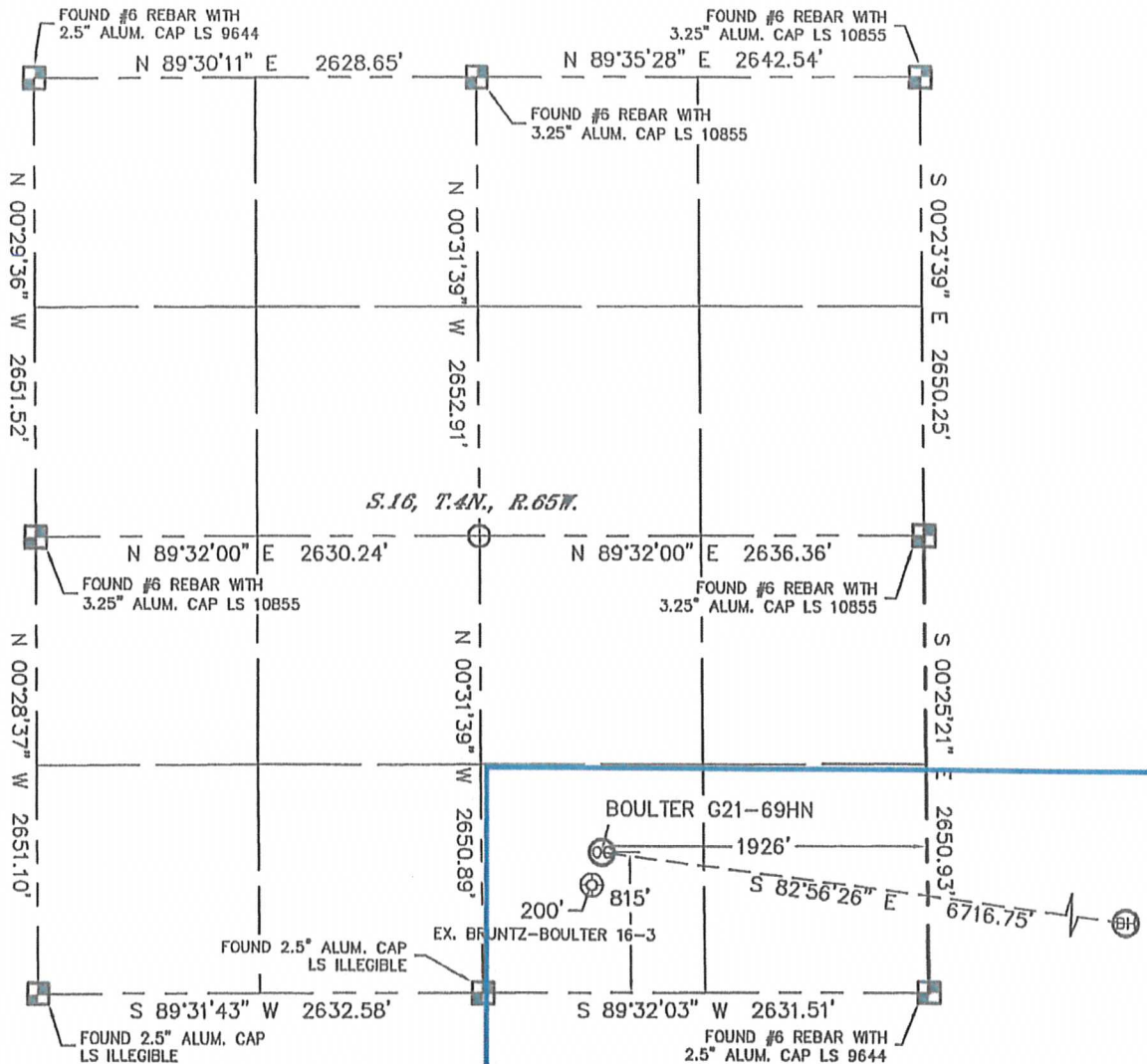
| | |
|---|---|
|  <p>Proposed 480 acre spacing unit</p> |  <p>Bottom Hole Location</p> |
|---|---|

Lat40°, Inc. 1635 Foxtrail Drive, Suite 325 Loveland, CO 970-776-3321

WELL LOCATION CERTIFICATE

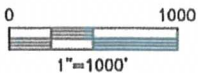
SECTION: 16
TOWNSHIP: 4N
RANGE: 65W

THIS MAP DOES NOT REPRESENT A BOUNDARY SURVEY



In accordance with a request from Ryan Hawkins with Noble Energy Inc., Lat40°, Inc. has determined the surface location of the BOULTER G21-69HN to be 815' from the SOUTH line and 1926' from the EAST line of Section 16, Township 4 North, Range 65 West and the bottom hole to be 75' from the NORTH line and 535' from the EAST line as measured at right angles from the section lines of Section 22, Township 4 North, Range 65 West of the Sixth Principal Meridian, County of Weld, State of Colorado.

I hereby state that this Well Location Certificate was prepared by me or under my direct supervision, that the fieldwork was completed on 10/4/11, for and on behalf of Noble Energy Inc. That this is not a Land Survey Plat or an Improvement Survey Plat, and that it is not to be relied upon for establishment of fence, building, or other future Improvement lines.



NOTE:



- 1) Bearings shown are Grid Bearings of the Colorado State Plane Coordinate System, North Zone, North American Datum 1983/2007. The lineal dimensions as contained herein are based upon the "U.S. Survey Foot."
- 2) Ground elevations are based on an observed GPS elevation (NAVD 1988 DATUM).
- 3) NEAREST EXISTING WELL: BRUNTZ-BOULTER 16-3, 200'
- 4) IMPROVEMENTS: See LOCATION DRAWING for all visible Improvements within 400' of disturbed area.
- 5) SURFACE USE: RANGELAND
- 6) INSTRUMENT OPERATOR: KYLE RUTZ

SURFACE LOCATION
LATITUDE: 40.30741°N
LONGITUDE: 104.66554°W
PDOP: 2.0
ELEV: 4807'
1/4,1/4: SW1/4SE1/4
NEAREST PROPERTY LINE: 283' NE

BOTTOM HOLE
LATITUDE: 40.30497°N
LONGITUDE: 104.64167°W

NOTE

According to Colorado law, you must commence any legal action based upon any defect in this W.L.C. within three years after you discover such defect. In no event, may any action based upon any defect in this survey be commenced more than ten years after the date of the certificate shown hereon. (13-80-105 C.R.S.)

- LEGEND**
-  = ALIQUOT MONUMENT AS DESCRIBED
 -  = CALCULATED POSITION

SHEET 1 OF 2

Brian T. Brinkman—On behalf of Lat40°, Inc.
Colorado Licensed Professional
Land Surveyor No. 38175 PROJECT#: 2011276

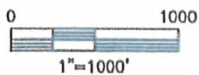
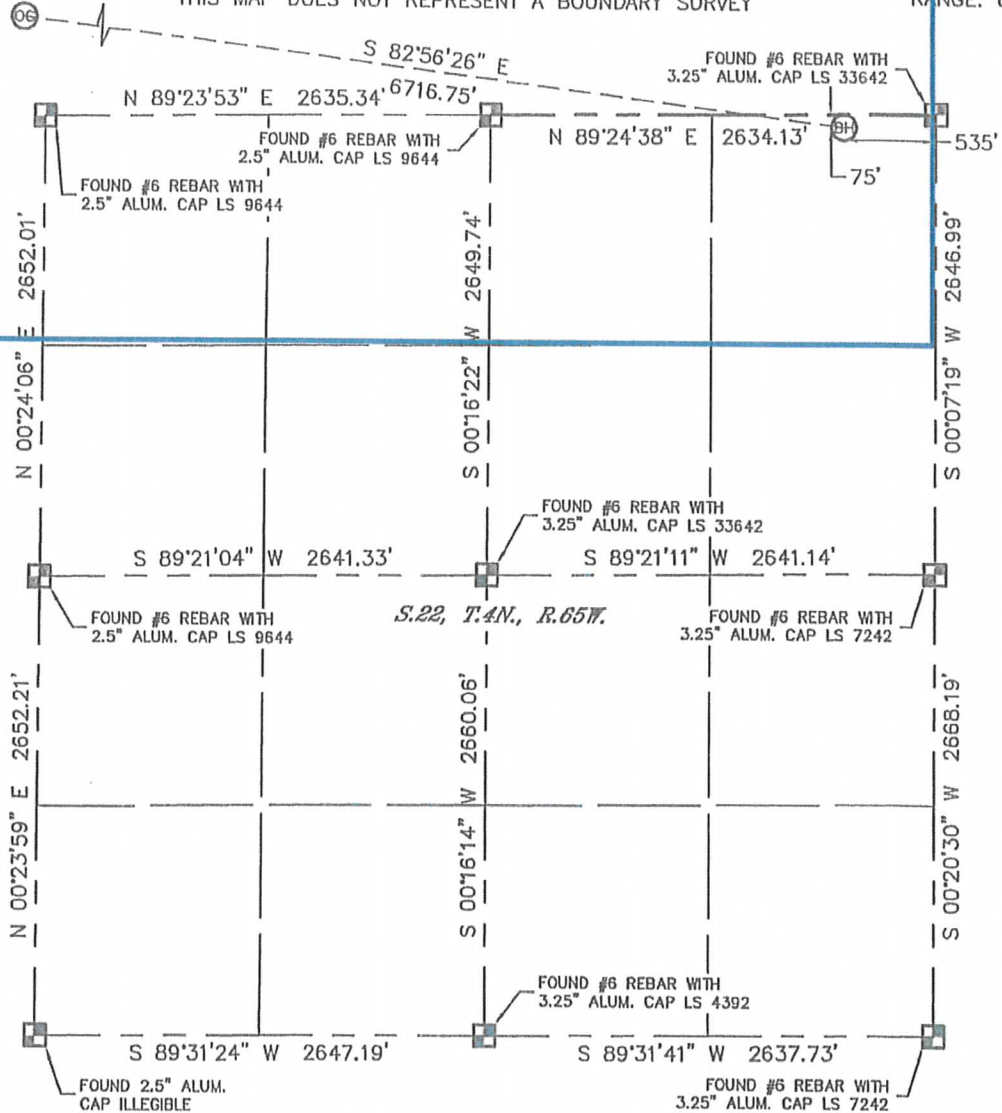


WELL LOCATION CERTIFICATE

SECTION: 16
TOWNSHIP: 4N
RANGE: 65W

BOULTER G21-69HN

THIS MAP DOES NOT REPRESENT A BOUNDARY SURVEY



NOTE
According to Colorado law, you must commence any legal action based upon any defect in this W.L.C. within three years after you discover such defect. In no event, may any action based upon any defect in this survey be commenced more than ten years after the date of the certificate shown hereon. (13-80-105 C.R.S.)

- LEGEND**
- = ALIQUOT MONUMENT AS DESCRIBED
 - = CALCULATED POSITION



SHEET 2 OF 2

Brian T. Brinkman—On behalf of Lat40^o, Inc.
Colorado Licensed Professional
Land Surveyor No. 38175

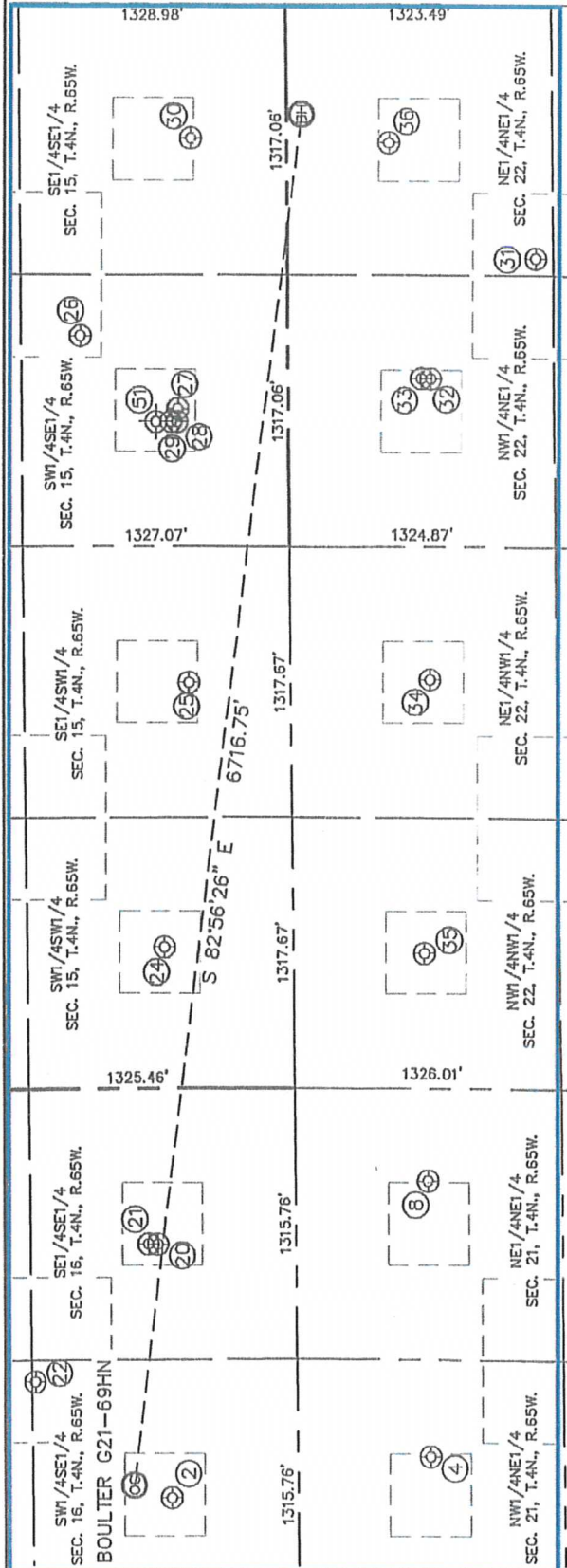
PROJECT#: 2011276

Lat40°, Inc. 1635 Foxtrail Drive, Suite 325 Loveland, CO 970-776-3321

SITE SKETCH

BOULTER G21-69HN

SECTION: 16
TOWNSHIP: 4N
RANGE: 65W



- ② BRUTZ-BOULTER 16-3
SW1/4SE1/4
625' FSL
1988' FEL
LAT-40.30689°N
LONG-104.66576°W
PDOP: 1.5
ELEV: 4814'
- ④ ULRICH 21-1
NW1/4NE1/4
664' FNL
1786' FEL
LAT-40.30335°N
LONG-104.66508°W
PDOP: 1.9
ELEV: 4833'
- ⑧ ULRICH 21-2
NE1/4NE1/4
663' FNL
448' FEL
LAT-40.30335°N
LONG-104.66028°W
PDOP: 2.2
ELEV: 4798'
- ⑩ BRUNTZ G22-30D
SE1/4SE1/4
686' FSL
757' FEL
LAT-40.30705°N
LONG-104.66135°W
PDOP: 1.2
ELEV: 4789'
- ⑪ BRUNTZ-BOULTER 16-1
SE1/4SE1/4
733' FSL
755' FEL
LAT-40.30718°N
LONG-104.66134°W
PDOP: 1.4
ELEV: 4790'
- ⑫ BRUNTZ G16-23
SW1/4SE1/4
1309' FSL
1420' FEL
LAT-40.30876°N
LONG-104.66372°W
PDOP: 1.9
ELEV: 4791'
- ⑬ JERKE 1-15
SW1/4SW1/4
639' FSL
586' FWL
LAT-40.30692°N
LONG-104.65618°W
PDOP: 2.5
ELEV: 4781'
- ⑭ OSTER 24-15
SE1/4SW1/4
506' FSL
1976' FWL
LAT-40.30656°N
LONG-104.65155°W
PDOP: 1.8
ELEV: 4742'
- ⑮ CHRISTINE NO1
SW1/4SE1/4
1033' FSL
1615' FEL
LAT-40.30801°N
LONG-104.64551°W
PDOP: 1.7
ELEV: 4696'
- ⑯ FRANCIS ARENS 34-15
SW1/4SE1/4
551' FSL
1967' FEL
LAT-40.30668°N
LONG-104.64679°W
PDOP: 1.7
ELEV: 4710'
- ⑰ FRANCIS ARENS 4-6-15
SW1/4SE1/4
555' FSL
2029' FEL
LAT-40.30669°N
LONG-104.64701°W
PDOP: 2.4
ELEV: 4711'
- ⑱ FRANCIS ARENS 5-6-15
SW1/4SE1/4
584' FSL
2029' FEL
LAT-40.30677°N
LONG-104.64701°W
PDOP: 2.5
ELEV: 4711'
- ⑳ ARENS 15-16G
SE1/4SE1/4
480' FSL
655' FEL
LAT-40.30649°N
LONG-104.64208°W
PDOP: 2.3
ELEV: 4697'
- ㉑ ARENS G22-17
NE1/4NE1/4
1237' FNL
1234' FEL
LAT-40.30178°N
LONG-104.64423°W
PDOP: 1.7
ELEV: 4708'
- ㉒ ARENS G22-18D
NW1/4NE1/4
712' FNL
1819' FEL
LAT-40.30322°N
LONG-104.64630°W
PDOP: 1.6
ELEV: 4715'
- ㉓ GRANT ARENS 1
NW1/4NE1/4
665' FNL
1818' FEL
LAT-40.30334°N
LONG-104.64630°W
PDOP: 1.6
ELEV: 4716'
- ㉔ CHESTNUT G22-3
NE1/4NW1/4
697' FNL
1991' FWL
LAT-40.30326°N
LONG-104.65154°W
PDOP: 1.5
ELEV: 4744'
- ㉕ CHESTNUT G22-4
NW1/4NW1/4
655' FNL
657' FWL
LAT-40.30337°N
LONG-104.65632°W
PDOP: 1.7
ELEV: 4775'
- ㉖ GRANT ARENS 22-4
NE1/4NE1/4
510' FNL
673' FEL
LAT-40.30377°N
LONG-104.64219°W
PDOP: 1.2
ELEV: 4699'
- ㉗ FRANCIS G ARENS #1
(PLUGGED & ABANDONED)
SW1/4SE1/4
660' FSL (COGCC)
2030' FEL (COGCC)
LAT-40.306896°N (COGCC)
LONG-104.646977°W (COGCC)
PDOP: N/A
ELEV: 4707' (COGCC)

