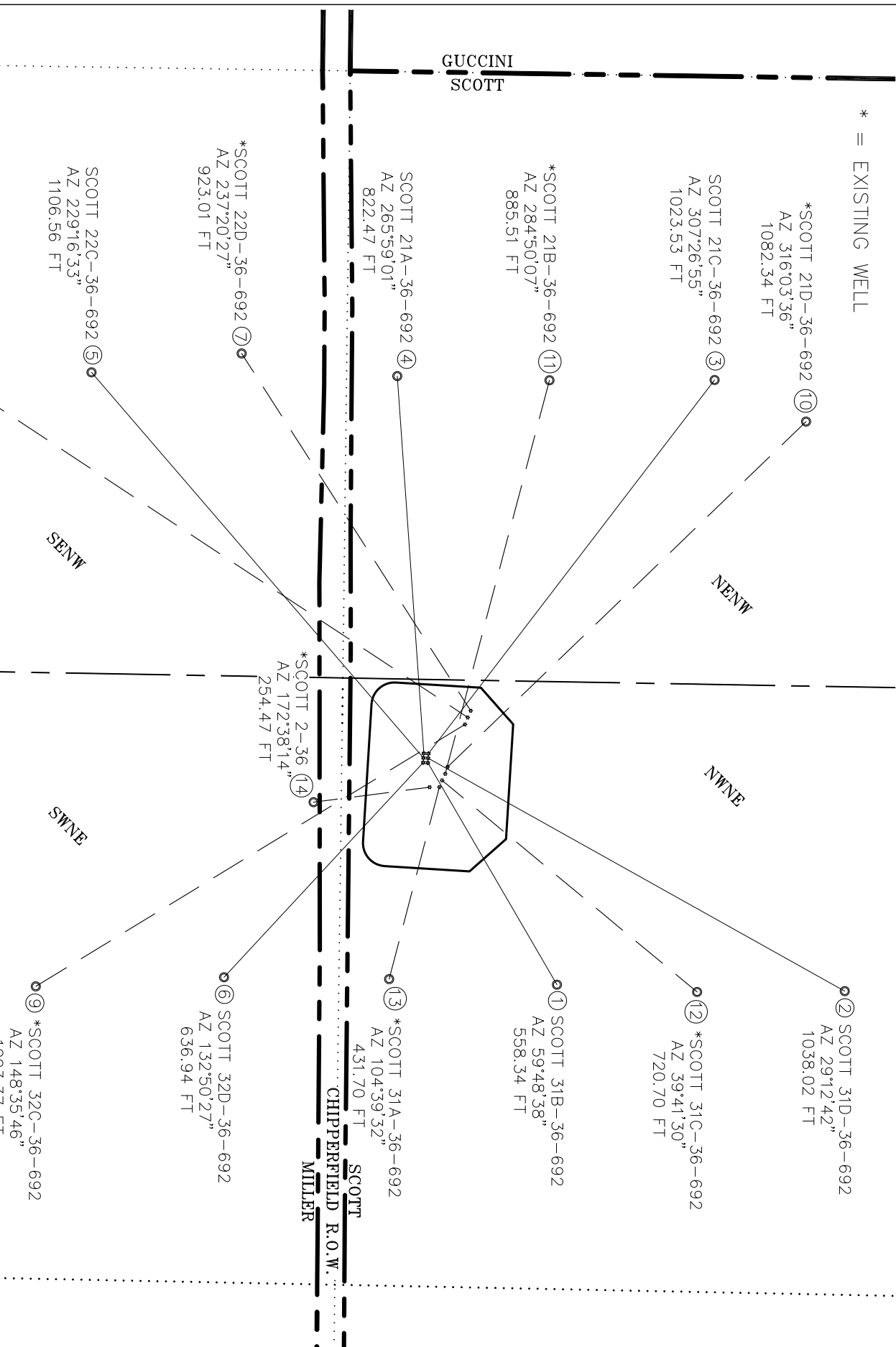


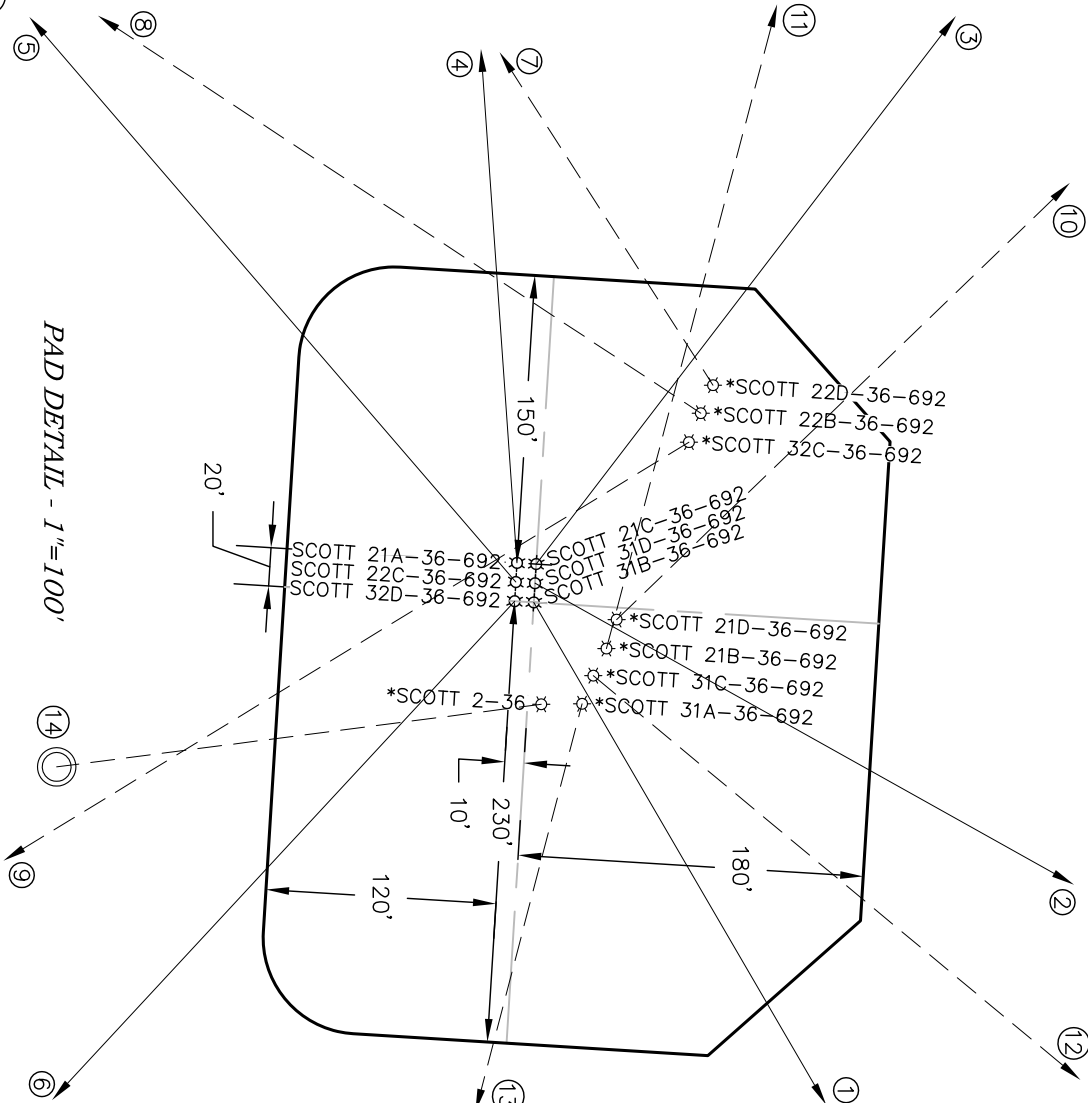
SURFACE HOLE LOCATIONS								BOTTOM HOLE LOCATIONS							
	WELL NAME	FNL	FEL	NORTHING	EASTING	LATITUDE	LONGITUDE		FNL	FEL	NORTHING	EASTING	LATITUDE	LONGITUDE	
1	SCOTT 31B-36-692	1128	2459	1609596.7	2403242.8	39.488050	-107.614609	840	1983	1609877.5	2403725.4	39.488851	-107.612923		
2	SCOTT 31D-36-692	1127	2469	1609597.4	2403232.9	39.488051	-107.614644	214	1983	1610503.4	2403739.4	39.490570	-107.612925		
3	SCOTT 21C-36-692	1127	2479	1609598.0	2403222.9	39.488052	-107.614680	515	1983 FWL	1610220.3	2402410.3	39.489708	-107.617610		
4	SCOTT 21A-36-692	1137	2480	1609588.0	2403222.3	39.488025	-107.614681	1205	1983 FWL	1609530.4	2402401.8	39.487814	-107.617583		
5	SCOTT 22C-36-692	1137	2470	1609587.4	2403232.2	39.488024	-107.614646	1870	1983 FWL	1608865.4	2402393.6	39.485988	-107.617557		
6	SCOTT 32D-36-692	1138	2460	1609586.8	2403242.2	39.488023	-107.614610	1564	1983	1609153.7	2403709.2	39.486864	-107.612920		
7	*SCOTT 22D-36-692	1036	2574	1609690.1	2403129.7	39.488299	-107.615018	1544	1938 FWL	1609192.0	2402352.6	39.486882	-107.617729		
8	*SCOTT 22B-36-692	1042	2560	1609683.7	2403144.3	39.488282	-107.614965	2193	1984 FWL	1608542.5	2402390.6	39.485102	-107.617541		
9	*SCOTT 32C-36-692	1048	2544	1609677.5	2403159.4	39.488266	-107.614911	1973	1954	1608744.3	2403729.1	39.485741	-107.612816		
10	*SCOTT 21D-36-692	1085	2451	1609639.9	2403251.8	39.488169	-107.614581	315	2071 FWL	1610419.2	2402500.7	39.490260	-107.617306		
11	*SCOTT 21B-36-692	1090	2436	1609634.6	2403266.9	39.488155	-107.614527	874	1988 FWL	1609861.3	2402410.9	39.488723	-107.617578		
12	*SCOTT 31C-36-692	1096	2422	1609627.7	2403281.0	39.488138	-107.614476	535	1974	1610182.3	2403741.3	39.489689	-107.612892		
13	*SCOTT 31A-36-692	1102	2407	1609621.9	2403295.6	39.488122	-107.614424	1205	1987	1609512.6	2403713.3	39.487849	-107.612936		
14	*SCOTT 2-36	1123	2406	1609600.6	2403295.9	39.488064	-107.614421	1375	2368	1609348.3	2403328.5	39.487373	-107.614285		




WELL INTERFERENCE EXHIBIT

SCOTT 2-36 PAD PHASE 4

NAD 83 COLORADO CENTRAL ZONE
SURFACE HOLE LOCATIONS




*NOTE: THE FINISHED PAD ELEVATION IS 5894.5'

**ECLIPSE**
Surveying, Inc.

111 E. THIRD ST. SUITE 208 RIFLE, CO 81650
(970) 625-3048

REV. DATE: 1" = 300'
SCALE: 2/14/12
DATE: 1 OF 1
SHEET: SCOTT 2-36
PROJECT: TAB
DFT:

**Bill Barrett Corporation**

NW¹/₄NE¹/₄, SECTION 36
T. 6 S., R. 92 W. of the 6th. P.M.
GARFIELD COUNTY, COLORADO