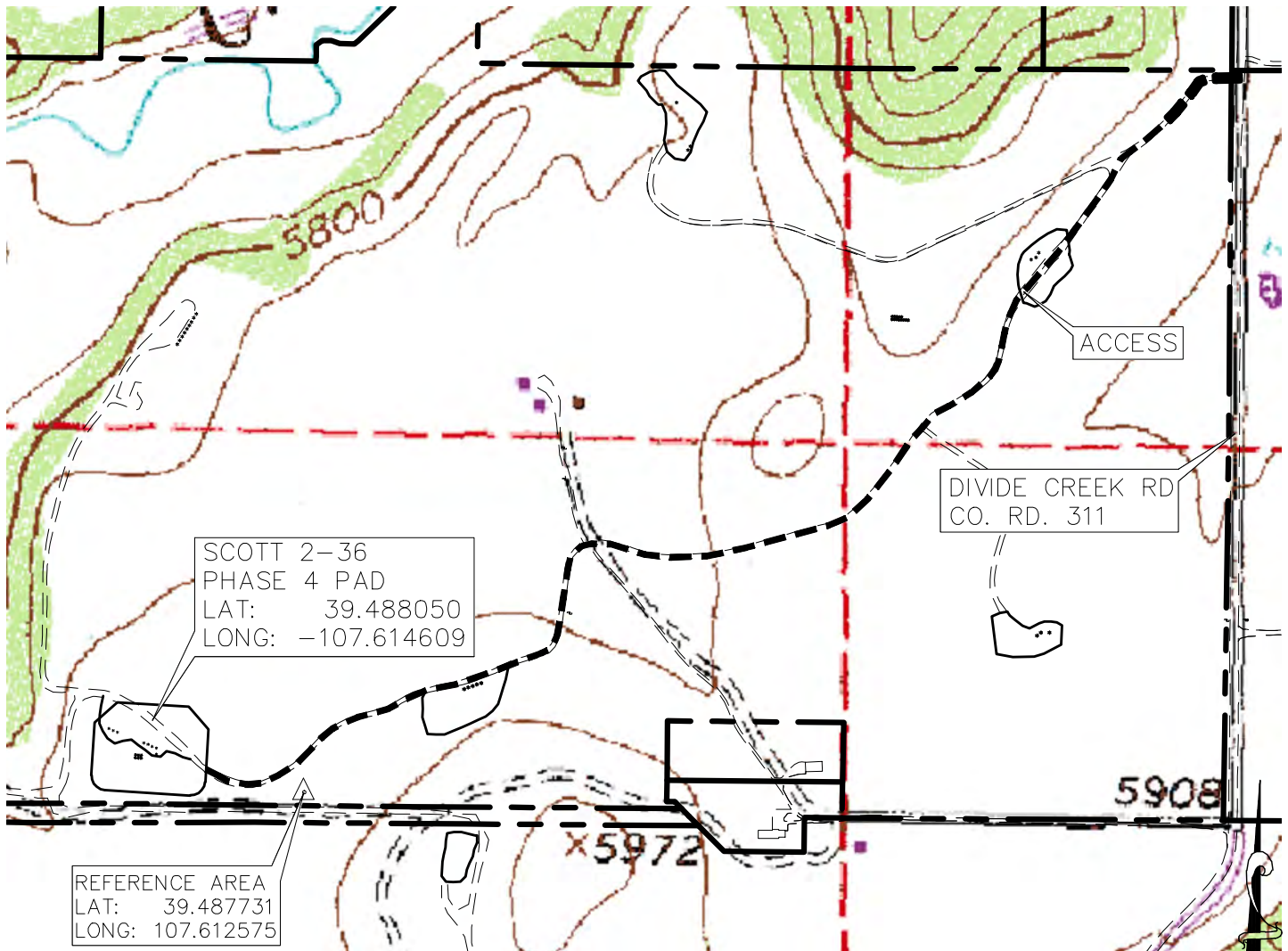


**B** Bill Barrett Corporation

**SCOTT 2-36 PHASE 4 PAD PLAT PACKAGE**

**NW<sup>1</sup>/<sub>4</sub> NE<sup>1</sup>/<sub>4</sub> , SECTION 36, T. 6 S., R. 92 W. OF THE 6TH. P.M.  
GARFIELD COUNTY, COLORADO**



PLAT PACKAGE TABLE OF CONTENTS

PAGE 1: COVER SHEET AND REFERENCE AREA  
PAGE 2: GRADING PLAN AND PAD LAYOUT  
PAGE 3: DRILL PAD CROSS SECTIONS  
PAGE 4: DRILL RIG LAYOUT  
PAGE 5: ACCESS AND VICINITY MAP  
PAGE 6: RECLAIMED PAD AND PRODUCTION EQUIPMENT  
PAGE 7: PAD OFFSET FOOTAGES  
PAGE 8: ROAD AND PIPE FOOTAGES



**ECLIPSE**  
Surveying, Inc.

111 E. THIRD ST., SUITE 208, RIFLE, CO 81650  
(970) 625-3048

REV. DATE:

SCALE:

DATE:

SHEET:

PROJECT:

DFT:

1" = 600'

2/14/12

1 OF 8

SCOTT 2-36

TAB

**B** Bill Barrett Corporation

**SCOTT 2-36 PH 4 PAD  
COVER SHEET AND REFERENCE**