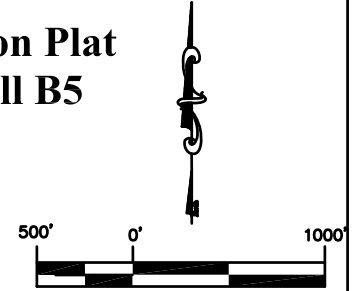
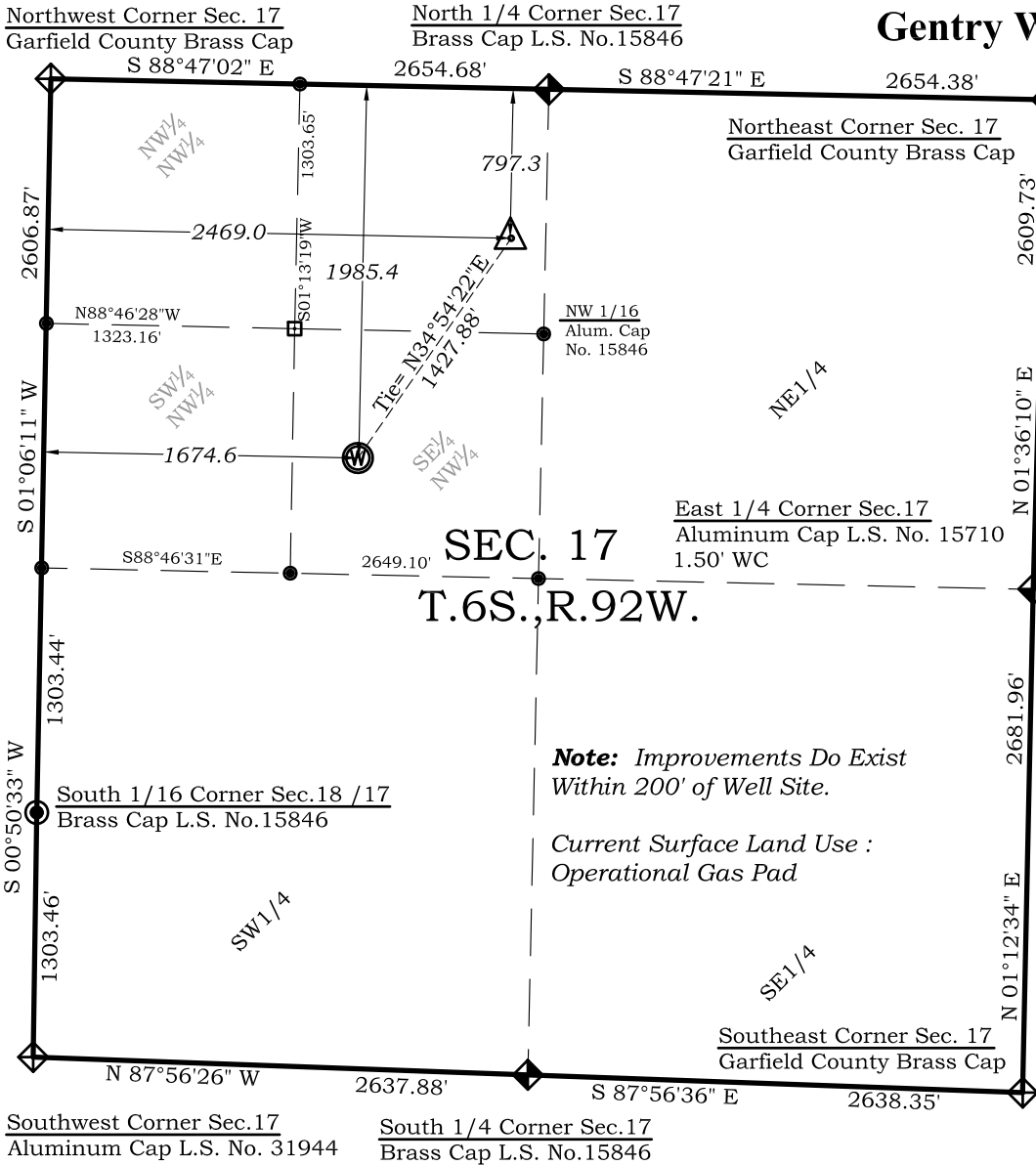


Well Location Plat

Gentry Well B5



Legend

- Field Surveyed Section Corner
- Field Surveyed Quarter Corner
- Calculated Section Corner Location
- Field Surveyed 1/6 Corner

Bottom Hole:

Gentry B5

797' FNL
2469' FWL

NAD83

Lat: 39.531706521°N
Long: 107.691279295°W

NAD27

Lat: 39.531726001°N
Long: 107.690663100°W

Surface: Gentry B5

1985' FNL
1675' FWL

Gnd El= 5624.5
Pad El= 5624.5

NAD83

Lat: 39.528426952°N
Long: 107.694049754°W

NAD27

Lat: 39.528446432°N
Long: 107.693433503°W

UTM 13 NORTH

NAD 1983

NORTHING
14366393.685

EASTING

880727.463

Note: Improvements Do Exist Within 200' of Well Site.

Current Surface Land Use :
Operational Gas Pad

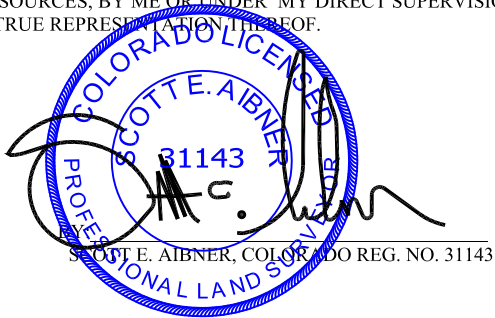
Prepared For Antero Resources
Proposed Gentry B5 Well Situate in The SE¹/₄NW¹/₄ Section 17, Township 6 South, Range 92 West of the 6 th. Principal Meridian, County of Garfield, State of Colorado

SURVEYOR'S CERTIFICATE

I, SCOTT E. AIBNER, A REGISTERED LAND SURVEYOR, LICENSED UNDER THE LAWS OF THE STATE OF COLORADO DO HEREBY CERTIFY THAT THE SURVEY SHOWN HEREON WAS PREPARED BY RIVER VALLEY SURVEY, INC., FOR ANTERO RESOURCES, BY ME OR UNDER MY DIRECT SUPERVISION AND THAT THIS PLAT IS A TRUE REPRESENTATION THEREOF.

Notes:

- 1.) LATITUDE AND LONGITUDE COORDINATES ARE DIFFERENTIALLY CORRECTED AND BASED ON PUBLISHED NGS CONTROL STATION "WDP-5".
SYSTEM: UTM ZONE: 13 NORTH DATUM: NAD 1983 (CONUS)
- 2.) ELEVATIONS ARE BASED ON NAVD OF 1929.
- 3.) ALL BOTTOM AND TOP HOLE LOCATIONS ARE MEASURED 90 DEGREES FROM SECTION LINE.
- 4.) USGS QUADRANGLE MAP "SILT CO".
- 5.) CURRENT SURFACE LAND USE: OPEN RANGELAND
- 6.) PDOP AT THE TIME OF LOCATION OF SURFACE WELL = 1.2
- 7.) BOTTOM HOLE DISTANCE TO NEAREST LEASE LINE IS 412.8'



River Valley Survey, Inc.
110 East 3rd. Street, Suite 207
Rifle, Colorado 81650
Ph: 970-379-7846

Project: Gentry B Pad

Proj. No. 06001-11

Field Date: 01-19-07

Scale: 1"= 1000'

Date: 03-01-12

Sheet: 1 of 7

Well Location Plat
Prepared For Antero Resources

Situate In:
SE¹/₄NW¹/₄ Section 17, T6S., R. 92 W.
of the 6th P.M., Garfield County,
Colorado

